



# 100kW Data Center Rack for Edge Computing





## 100kW Data Center Rack for Edge Computing

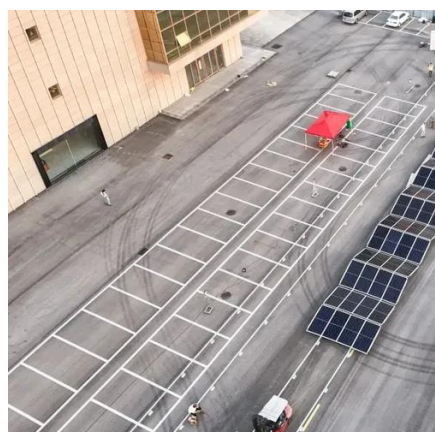


### [Data Center Rack Power Costs: A Condensed Analysis](#) , Nlyte

While a standard rack uses 7-10 kW, an AI-capable rack can demand 30 kW to over 100 kW, with an average of 60 kW+ in dedicated AI facilities. This article provides a ...

### [How to Choose Racks for Edge Data Centers](#)

Racks of up to 70U (more than 10 feet tall) are sometimes used in high-density data center environments. Those sizes are often much too tall for small-footprint micro data ...



### [HostDime Data Centers Support AI Workloads with ...](#)

HostDime's high density data centers provide unparalleled support for AI/ML/HPC workloads, boasting power density of up to 100kW ...

### [Leading The Way in Edge Computing](#)

Our edge data centers are purpose-built to deliver the lowest latency and the highest performance. Discover more about how EdgeConneX is leading ...



### [Designing Data Centers for AI: Infrastructure for ...](#)

A single rack supporting GPU-based compute can draw 30 to 100 kW or more - far beyond traditional data center requirements. This ...



### [High-Density Racks: 100kW+ Designs for AI Data Center ...](#)

Average AI rack costing \$3.9M in 2025 vs \$500K traditional--7x increase. GB200NVL72 racks reaching 132kW; Blackwell Ultra and Rubin targeting 250-900kW with 576 GPUs/rack by 2026 ...



### [AI Data Center Infrastructure: Powering the Future of AI Compute](#)

100+ kW cooling per rack in thermal design These hardware and workload demands push infrastructure design to the bleeding edge, requiring custom electrical and mechanical ...



### [Micro Data Centers for Edge Computing](#)



House your entire edge computing infrastructure in a single secure, prefabricated micro data center cabinet with self-contained cooling, ...

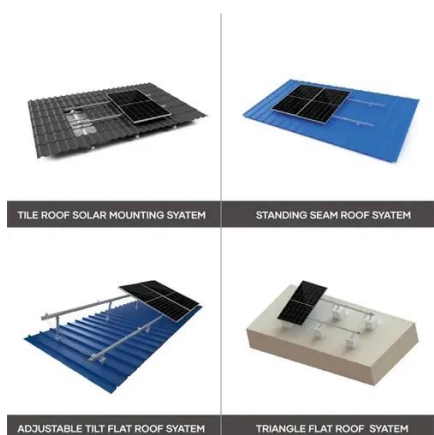


### [Best Practices for Data Center Area Sizing Per Rack Based on ...](#)

Best Practices for Data Center Area Sizing Per Rack Based on Power Density In today's rapidly evolving digital landscape, data centers must be designed with precision to support varying ...

### [HostDime Data Centers Support AI Workloads with Up to 100kW Per Rack](#)

HostDime's high density data centers provide unparalleled support for AI/ML/HPC workloads, boasting power density of up to 100kW per rack.



### [ICeGaN to Enable 100kW/Rack Data Centres](#)

To deliver 100kW at current power density levels, the power supply units alone would occupy 6U, leaving very little for the IT systems themselves. But things are moving quickly.

### [Edge Data Centers: Complete Guide to Edge Computing ...](#)



Edge data centers process data close to end users, reducing latency from hundreds of milliseconds to single digits. Learn how edge computing works, why AI workloads ...



### Data Center Density

"I'm a believer in history and the growth--or lack of it--in power density in the last ten years does nothing to support the prediction by participants of the Data Center 2025 study that average ...

### [High-Density Racks: The Future of Colocation Data Centers](#)

Today, hyperscale operators and colocation providers are supporting workloads that demand significantly more power, with some facilities capable of handling 100+ kW per rack.



### [High-Density Racks: 100kW+ Designs for AI Data Center ...](#)

High-Density Racks: 100kW+ Designs for AI Data Center Infrastructure Average AI rack costing \$3.9M in 2025 vs \$500K traditional--7x increase. GB200NVL72 racks reaching 132kW; ...

### [Rack Density Increasing: Trends and Implications](#)



Our latest blog post explains why density per rack is going up, a recent industry trend pushing data centers to pack more computing ...



### [High-Density Racks: The Future of Colocation ...](#)

Colocation data centers are evolving to support 100+ kW rack densities, utilizing cutting-edge power and cooling solutions to meet the ...



### [How Much Electricity Does a Data Center Use? Complete 2025 ...](#)

Some cutting-edge AI training facilities are pushing individual racks to 100+ kW, fundamentally changing data center design and cooling requirements. What Drives Data ...



### [HostDime's new Orlando data center to empower ...](#)

HostDime, a hyper-edge data center provider, is set to open a Tier IV data center in Orlando, Florida. The facility will support next ...



### [Data Center Server Rack: The Ultimate Guide \[2025\]](#)



Master the art of data center server rack management with our ultimate 2024 guide. Rack selection, organization, and optimization with ...



### [Smart Modular Data Center](#)

We offer five basic topological units, allowing you to customize and configure your data center according to your unique requirements. Enclose up to ten racks with a 100kW capacity, and ...



### [Executive Roundtable: Strategies for Cooling ...](#)

Our Second Quarter 2021 roundtable offers insights on four topics: rack density trends and cooling strategies, the outlook for data center staffing, ...



### [100+ kW per rack in data centers: The evolution and](#)

The surge in power density to 100+ kW per rack in data centers is both an evolution and a revolution in the industry, signifying a shift in how we approach computing ...

### [Rising Rack Densities: A Driver for High-Density Rack Power](#)



Rising Rack Densities: A Driver for High-Density Rack Power Distribution Units The average power density of data center racks continues to rise to support AI and ML, crossing 10kW in ...



### [Driving Data Center Efficiency with High-Density Rack PDUs](#)

Racks that accommodate supercomputing applications used for national security and AI research draw as much as 100kW. Power distribution units (PDUs) for 30kW racks are ...

### [Adaptive Power Systems for the 100kw-Rack AI Data Center](#)

In AI clusters, it's not unusual to see racks drawing 80 to 100 kilowatts, with projections indicating that racks demanding several hundred kilowatts -- and eventually ...



### [Data Center Trends: A Glimpse into the Future of Rack Density, ...](#)

Data center distribution continues to fuel the edge data center market along with the AI, LLM, and generative AI requirements pushing GPU high-density solutions. AFCOM reports that most ...

### [AI Data Center Infrastructure: Powering the Future ...](#)



100+ kW cooling per rack in thermal design These hardware and workload demands push infrastructure design to the bleeding edge, requiring ...



### [kW per Rack Explained: Optimize Your Data Center](#)

Learn how kW per rack impacts colocation pricing, energy efficiency, and performance. Discover best practices to manage power, reduce costs, and future-proof your IT ...

### [What is the typical power density range for a data center rack?](#)

General Power Density Ranges Most traditional data centers operate within the following power density ranges: Low-Density Racks: 2 kW to 5 kW per rack - Common in enterprise ...



### [What's driving higher rack densities in the data ...](#)

A more likely scenario is for an edge or colocation data center to have one extreme density HPC pod of two to twelve racks, or a cluster ...



## Contact Us

---

For inquiries, pricing, or partnerships:

<https://www.zawojesolina.pl>

Phone: +48 22 173 6647

Email: [info@zawojesolina.pl](mailto:info@zawojesolina.pl)

Scan QR code for WhatsApp.

