



# 1mw energy storage power station covers an area





## 1mw energy storage power station covers an area



### [Typical design of energy storage power station](#)

Abstract: At present energy storage power stations distributed in northwestern provinces in China were put into operation one after another and it provided valuable practical experiences for the ...

### [Grid-Scale Battery Storage: Frequently Asked Questions](#)

A battery energy storage system (BESS) is an electrochemical device that charges (or collects energy) from the grid or a power plant and then discharges that energy at a later time to ...



### [How much land does 1 MW of battery energy ...](#)

Battery energy storage has emerged as a fundamental element in the transition toward sustainability within modern power ...

### [Land Requirements for Utility-Scale PV: An Empirical Update ...](#)

Beyond potential land-use impacts, the amount of land re-quired to build a utility-scale PV plant is also an important cost consideration. The cost of most components of a utility-scale PV plant ...



### [What is Megawatt and how many homes can it ...](#)

A Megawatt (MW) is a unit of power equal to one million watts (1,000,000 watts). It is commonly used to measure the power output of large power ...



### [Why 1MW Energy Storage Power Station Capacity Matters Now ...](#)

That's the magic of a 1MW energy storage power station capacity system. As renewable energy adoption skyrockets (pun intended), these storage hubs are becoming the ...



### [How Much Land Do Energy Storage Power Stations Really ...](#)

But here's the rub: While everyone talks about battery chemistry and power ratings, the elephant in the control room remains land footprint. A typical 100MW/400MWh lithium-ion battery ...



### [How much land does a 1MW energy storage power station occupy?](#)



Generally, a 1MW lithium-ion storage facility occupies approximately 1 to 2 acres of land. This area accounts for the battery modules, cooling systems, inverters, and associated ...



### [Understanding MW and MWh in Battery Energy ...](#)

In the context of a Battery Energy Storage System (BESS), MW (megawatts) and MWh (megawatt-hours) are two crucial ...

### [Energy Storage Power Station Project Land Area: What You ...](#)

As battery densities improve by 8-12% annually, today's energy storage project land needs might shrink faster than polar ice caps. But for now, smart planning remains crucial.



### [Morro Bay Energy Storage Project](#)

Morro Bay Power Plant: Battery Project Battery Energy Storage: Three enclosed buildings with fire protection systems to house the batteries. Each low-profile building would be 30 feet high, ...

### [How much land does a shared energy storage station occupy?](#)



A standard commercial lithium-ion battery installation can require around 0.1 acres for a 1 megawatt (MW) system, effectively accommodating substantial energy capacity in ...



### 1 mw battery storage

Dive into the world of 1MW battery storage systems that are pivotal in managing sustainable energy. Learn about the intricacies of these systems, including their design, the different types ...



### [1MW CONTAINER ENERGY STORAGE POWER STATION COVERS AN AREA ...](#)

The role of container energy storage power station  
It serves as a rechargeable battery system capable of storing large amounts of energy generated from renewable sources like wind or ...



### [Land Requirements for Utility-Scale PV: An Empirical Update ...](#)

This research was supported by funding from the U.S. Department of Energy, Office of Energy Efficiency and Renewable Energy, Solar Energy Technologies Office Summary of open ...



### [How much land does 1 MW of battery energy storage occupy?](#)



For a 1 MW flow battery installation, the land requirement can extend to about 1.5 acres or more. The increased land use emerges from several factors, such as the separation ...



### Battery Storage

We typically need a minimum of 1/4 acre (approximately 20MW/40MWh). The land ideally needs to be no closer than 200 meters of housing (for the minimal noise from cooling system). The ...

### Microsoft Word

There are potentially two major categories of benefits from energy storage technologies for fossil thermal energy power systems, direct and indirect. Grid-connected energy storage provides ...



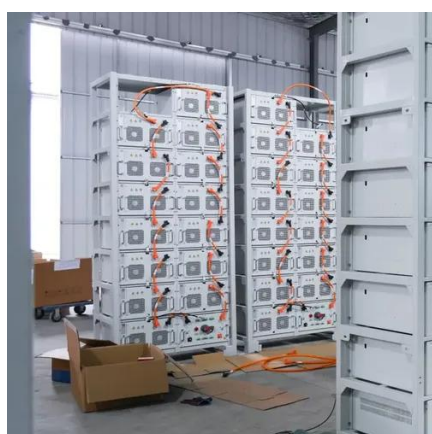
### [Land-Use Requirements for Solar Power Plants in the United ...](#)

This work was made possible by the Solar Energy Technologies Program at the U.S. Department of Energy (DOE). The authors wish to thank Billy Roberts, Jarett Zuboy, Trieu Mai, Nate Blair, ...

### [1MW Battery Energy Storage System](#)



The MEGATRON 1MW Battery Energy Storage System (AC Coupled) is an essential component and a critical supporting technology for smart grid and renewable energy (wind and solar). The ...



[How many acres does the shared energy storage power station ...](#)

Effective land use planning plays a crucial role in the successful development of shared energy storage power stations. Planners must consider not only the initial land area ...

[Battery storage power station - a comprehensive guide](#)

The guide covers the construction, operation, management, and functionalities of these power stations, including their contribution to grid stability, peak shaving, load shifting, and backup ...





## Contact Us

---

For inquiries, pricing, or partnerships:

<https://www.zawojcsolina.pl>

Phone: +48 22 173 6647

Email: [info@zawojcsolina.pl](mailto:info@zawojcsolina.pl)

Scan QR code for WhatsApp.

