



# 25kw outdoor telecom cabinet for shopping malls

Modular design,  
unlimited combinations in parallel  
**BUILT-IN DUAL FIRE PROTECTION MODULE**





## 25kw outdoor telecom cabinet for shopping malls



### [Quality Outdoor Telecom Cabinet & Wall Mounted ...](#)

China leading provider of Outdoor Telecom Cabinet and Wall Mounted Telecom Cabinet, Suzhou Langji Technology Co., Ltd. is Wall Mounted ...

### [NEMA Outdoor Telecommunications Cabinets , DDB Unlimited](#)

DDB Unlimited manufactures NEMA outdoor cabinets to protect telecommunications, fiber optics, Wi-Fi and other electronics from the outdoors.



### [Outdoor Enclosures , NEMA-Rated Telecom Cabinets , IP55, ...](#)

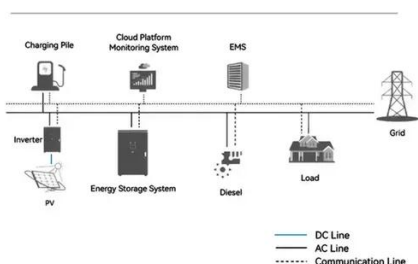
Our outdoor telecom cabinets are designed to protect your sensitive network equipment from harsh environments where equipment may be exposed to dust or water. For added protection, ...

### [Telecommunication Cabinets , Iceberg Cabinets](#)

Iceberg Cabinet's premium Telecommunication Cabinets for efficient organization and protection of your valuable equipment. Choose quality and reliability today!



### System Topology



### [Outdoor enclosures & multitenant cabinets for telecom](#)

Vikino outdoor enclosures, including our industry-leading multitenant cabinets, safeguard critical telecom, energy, and industrial equipment from weather, dust, and vandalism.

### [Telecoms Cabinet Manufacturing for Outdoor & Indoor, Machan...](#)

Our cabinets are built to withstand harsh weather conditions and provide excellent protection for power management systems, telecom base stations, energy storage battery systems, and ...



### [TSR ComSupply, eBay Stores](#)

Stop shopping around for your Telecom supplies! We are a distributor of industry standard products. Contact us today and we can help you locate what you are looking for. We are a ...



### [Weatherproof Outdoor Electrical Enclosures, Durable Outdoor Telecom](#)



Discover AZE Telecom's weatherproof outdoor electrical enclosures and durable outdoor cabinets. Protect your electrical and telecom equipment from harsh environments with our IP ...



Our Lifepo4 batteries can be connected in parallels and in series for larger capacity and voltage.



### [The structure and cost of telecom cabinets](#)

Telecom cabinets protect equipment with durable materials, weatherproofing, and cooling systems. Costs vary by size, material, and ...

### [Outdoor Telecommunication Enclosures](#)

We provide superior outdoor enclosures that are ready for installation. Fill out our registration form or call us at 904-674-2976 to learn more about our products and customization services.



### [Outdoor Integrated Telecom Cabinet for Base Stations & Nodes](#)

Durable outdoor integrated telecom cabinet for base stations and data nodes. Provides reliable protection and efficient housing in harsh environments.

### [Outdoor Telecom Cabinets for Reliable Field Deployment](#)



Explore our range of outdoor telecom cabinets engineered for reliable field deployment. Designed to protect sensitive electronic equipment from harsh weather, dust, and vandalism, our ...



### [Outdoor Enclosures , NEMA-Rated Telecom Cabinets , IP55, ...](#)

Our outdoor telecom cabinets are designed to protect your sensitive network equipment from harsh environments where equipment may be exposed to dust or water. For added protection, ...



### [Outdoor Telecom Cabinet , Outdoor Telecom Enclosures , Cube Cabinet](#)

Cell towers, business parks, campuses, data centers, strip malls, sports stadiums, oil fields, wind farms, solar fields, lift stations, utility sub stations and traffic systems all rely on our expansive ...



### [Outdoor Telecom Cabinet](#)

Outdoor Telecom Cabinets are rugged enclosures designed to protect telecommunications equipment from environmental factors while providing secure access for maintenance. Learn ...



### [Air-cooled C& I BESS Energy Storage Cabinet , AZE](#)



AZE's Air-cooled C& I BESS cabinets are a practical and efficient solution for businesses looking to reduce energy costs, enhance sustainability, and improve energy resilience, call for ...

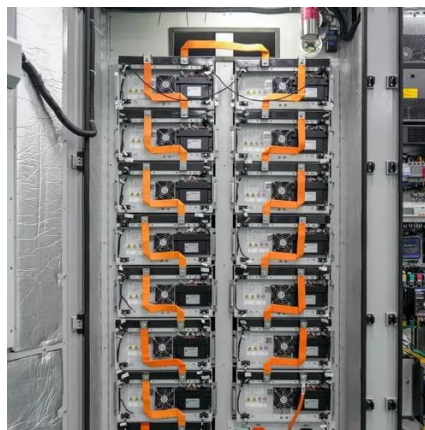


### [Top 5 Questions About ESTEL Rectifier Modules](#)

Discover answers to top questions about rectifier modules for outdoor telecom cabinets, including efficiency, reliability, installation, and maintenance tips.

### [Outdoor Telecom Enclosure](#)

These KDM outdoor telecom boxes have durable sandwich structure panels and multiple compartments. They are windproof, rainproof, sunproof, waterproof, and weatherproof for ...



### [24 kW Telecom Power Cabinet with Rectifier & Distribution System](#)

Robust telecom cabinet delivering 24 kW with integrated rectifier and power distribution. Ensures reliable, efficient power for critical outdoor telecom use

### [Outdoor Telecom Cabinets & Enclosures , NEMA ...](#)



Explore durable outdoor cabinets and enclosures engineered for protection, performance, and reliability in demanding environments.



### [Weatherproof Outdoor Electrical Enclosures , Durable Outdoor ...](#)

Discover AZE Telecom's weatherproof outdoor electrical enclosures and durable outdoor cabinets. Protect your electrical and telecom equipment from harsh environments with our IP ...



### [Weatherproof Outdoor Electrical Enclosures](#)

Discover AZE Telecom's weatherproof outdoor electrical enclosures and durable outdoor cabinets. Protect your electrical and telecom equipment ...



### [Outdoor Telecom Cabinet , Outdoor Telecom Enclosures , Cube Cabinet](#)

Explore Charles Industries' Outdoor Telecom Cabinets & Enclosures for secure, durable protection of telecom equipment in outdoor environments. Enquire now!



### [Outdoor Enclosures , NEMA-Rated Telecom ...](#)



Discover AZE's premium outdoor enclosures designed for superior weatherproof protection and NEMA-rated durability. Perfect for industrial ...





## Contact Us

---

For inquiries, pricing, or partnerships:

<https://www.zawojcsolina.pl>

Phone: +48 22 173 6647

Email: [info@zawojcsolina.pl](mailto:info@zawojcsolina.pl)

Scan QR code for WhatsApp.

