



A solar terminal control system



LIQUID/AIR COOLING

ON GRID/HYBRID

PROTECTION IP54/IP55

BATTERY /6000 CYCLES





Overview

It measures and stores the power generation status of solar power generation in real time, and also controls inverter and equipment. Measurement and control data can be uploaded to a server via wired LAN or wireless communication, and can also be used for remote monitoring.

It measures and stores the power generation status of solar power generation in real time, and also controls inverter and equipment. Measurement and control data can be uploaded to a server via wired LAN or wireless communication, and can also be used for remote monitoring.

Solar Link ZERO is a compact measurement control terminal based on a small PC. It measures and stores the power generation status of solar power generation in real time, and also controls inverter and equipment. Measurement and control data can be uploaded to a server via wired LAN or wireless.

Terminal blocks in solar power plants serve as critical electrical connection points that safely join, distribute, and protect DC and AC circuits throughout the entire photovoltaic system. These essential components ensure reliable power transmission, enable systematic maintenance, and provide.

Ovation Green SCADA systems support grid stability and operational flexibility for any solar farm or plant type. Photovoltaic (PV) and concentrated solar power (CSP) plants have unique operational and control challenges. Solar power producers are seeking to implement renewable assets in a manner.

To meet different requirements for monitoring, control and automation of supply infrastructures and industrial systems, we developed the series5: a product family with a common technical basis and specifically practice-orientated core services. The connecting element of all our telecontrol systems:.

Remote Terminal Units (RTUs) are used in industrial control systems, such as electrical power transmission networks. These units serve as an interface between physical equipment and a central control system. RTUs enable electric system operators to monitor, manage, and control power systems.

Power blocks receive the DC power output from multiple solar modules and



distribute it to various components within the system, such as inverters, batteries, charge controllers, and grid connections. They provide secure and reliable electrical connectivity for solar panels, allowing for easy.



A solar terminal control system



[Solar Link ZERO T3 Measurement, display and ...](#)

This is a measurement, display and control terminal that constitutes the monitoring system for solar power generation facilities. With integrated ...

[Port Authority of New York & New Jersey, New ...](#)

The New Terminal One microgrid is especially resilient due to its novel "clustered" architecture, consisting of four separate "power ...



[Remote Terminal Units \(RTUs\) , Critical Tools for Power Systems](#)

Learn how Remote Terminal Units (RTUs) enable real-time monitoring, control, and management of power systems. Discover their role in energy grids, battery storage, and renewable integration.

[Improved global fast terminal sliding mode control-based MPPT ...](#)

Abstract The output power of a photovoltaic (PV) system fluctuates nonlinearly due to changes in solar irradiance and temperature. This research proposes an improved global ...



[Install Guide , SolarTouch Control System](#)

Introduction The SolarTouch® Solar Controller system consists of a four button controller, a valve actuator, a positive sealed diverter valve and two temperature sensors (used for water and ...



[The function of terminal blocks in solar power plants](#)

Utilizing terminal blocks enhances the safety of energy transfer and increases its reliability. Terminal blocks link solar panels, inverters, and the grid. They help electricity move safely and ...



[That lucky old sun terminal password?](#)

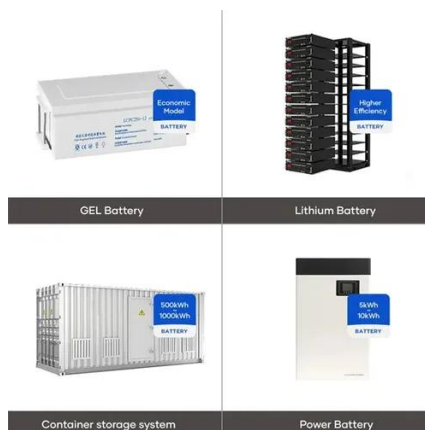
The quest's terminal passwords are for the control terminals OUTSIDE of the Helios One tower. I think that the terminal for the turrets inside the tower must be hacked.



[Improved global fast terminal sliding mode control-based MPPT ...](#)



The output power of a photovoltaic (PV) system fluctuates nonlinearly due to changes in solar irradiance and temperature. This research proposes an improved global fast ...



[Role of Remote Terminal Units \(RTUs\) & Phasor](#)

In solar and wind power projects, Remote Terminal Units (RTUs) and Phasor Measurement Units (PMUs) are key to real-time monitoring, intelligent control, grid ...



[Solar Charge Controller Basics: What It Is, Types & How It Works](#)

Wondering what a solar charge controller is, why it's essential, and what to consider while installing this component? Discover the basics of solar panel charge controllers.



[Remote Terminal Units \(RTUs\) . Critical Tools for ...](#)

Learn how Remote Terminal Units (RTUs) enable real-time monitoring, control, and management of power systems. Discover their role in energy ...

[Tools and applications o Kostal Solar Electric](#)



KOSTAL tools and applications at a glance KOSTAL Solar App Whether you're on the move or at home, with the KOSTAL Solar App, you can ...



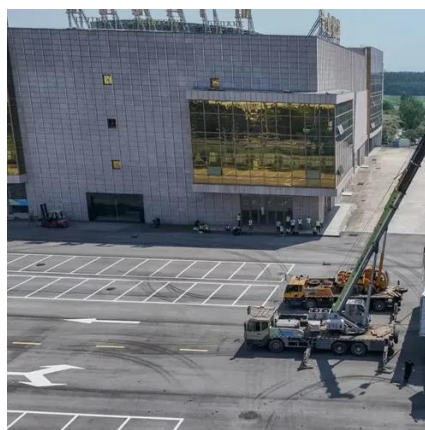
[Solar Link ZERO T3 Measurement, display and control of ...](#)

This is a measurement, display and control terminal that constitutes the monitoring system for solar power generation facilities. With integrated remote I/O, it is ideal for monitoring facilities ...



[Remote Terminal Units - Quadra Electronics](#)

A solar remote monitoring system can help you fill up this knowledge gap in your solar energy generating plant. You may be wondering what this ...



[Marathon Special Products](#)

Terminal Blocks in the Solar Industry Terminal blocks ensure reliable electrical connections between different elements of the solar power system, facilitating efficient power transmission ...



[Remote Terminal Units](#)



A solar remote monitoring system can help you fill up this knowledge gap in your solar energy generating plant. You may be wondering what this management system is if you haven't heard ...



[Pentair SolarTouch Solar Control System ...](#)

AC WIRING DIAGRAM 120 VAC LINE VOLTAGE 240 VAC LINE VOLTAGE TERMINAL BLOCK GROUND AC1 AC2 AC3 AC4 NEUTRAL SOLAR ...



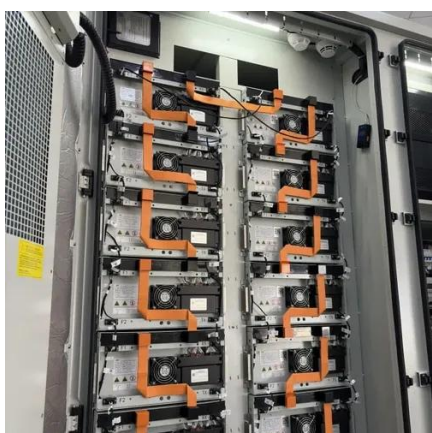
[Remote Terminal Units](#)

A solar remote monitoring system can help you fill up this knowledge gap in your solar energy generating plant. You may be wondering what this ...



[Understanding RTU \(Remote Terminal Unit\) in Industrial Automation](#)

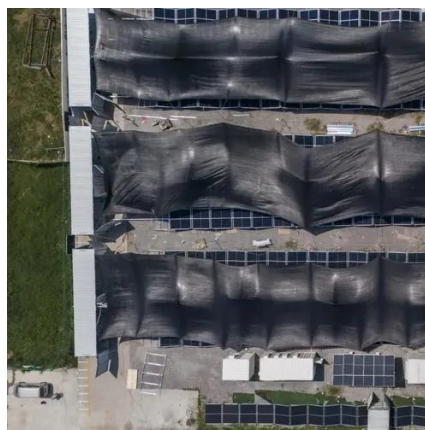
The Remote Terminal Unit (RTU) operates as an industrial automation device which enables remote monitoring as well as control of field equipment. The main purpose of ...



[Solar Tracker Control Unit \(TCU\) One axis - Startak](#)



Communication: wireless mesh Local controls: with OPT operator terminal Mounting: under the torque tube Bulk purchase? contact us for volume discount and customization. The TCU is ...



[Solar Tracker Systems: Complete Guide To Maximize Solar ...](#)

Comprehensive guide to solar tracker systems. Learn about types, costs, installation, and ROI. Increase solar power output by 30-40% with the right tracking system.

[Marathon Special Products](#)

They provide secure and reliable electrical connectivity for solar panels, allowing for easy interconnection and wiring. They help prevent damage to equipment and ensure the safety of ...



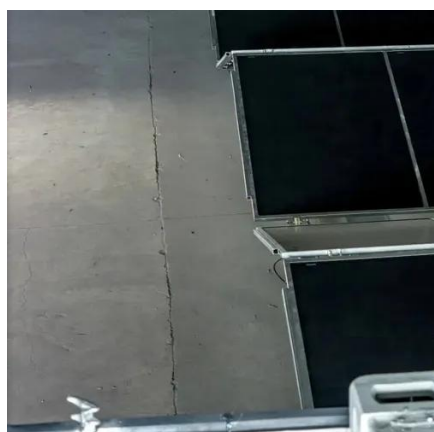
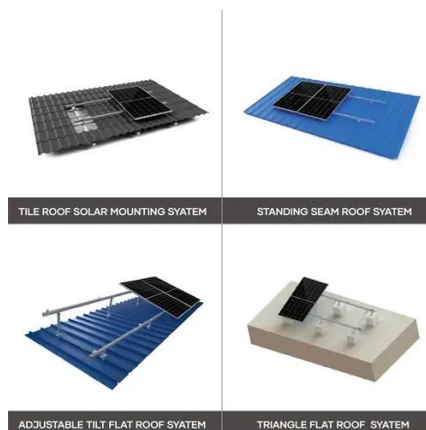
Solar SCADA System

Emerson's Ovation(TM) Green SCADA system and automation software can help control critical solar power generation processes, increase operational efficiencies and megawatt production, ...

[Understanding RTU \(Remote Terminal Unit\) in ...](#)



The Remote Terminal Unit (RTU) operates as an industrial automation device which enables remote monitoring as well as control of ...



Solar SCADA System

Emerson's Ovation(TM) Green SCADA system and automation software can help control critical solar power generation processes, increase operational efficiencies and megawatt production, ...

Photovoltaic Controllers: Key Components and ...

Photovoltaic controllers manage and regulate the electricity produced by solar panels in a solar power system. Its main functions include ...



The Function of Terminal Blocks in Solar Power Plants: Complete ...

Complete guide to terminal blocks in solar power plants - functions, types, selection criteria, installation, and maintenance for optimal performance and safety.



Contact Us

For inquiries, pricing, or partnerships:

<https://www.zawojcsolina.pl>

Phone: +48 22 173 6647

Email: info@zawojcsolina.pl

Scan QR code for WhatsApp.

