

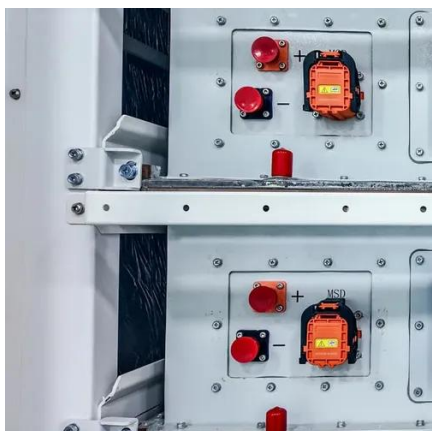


# Acs800 inverter cabinet power





## Acs800 inverter cabinet power



### [ABB ACS800 Cabinet Installation And Operating Instruction](#)

It is to be installed into a cabinet by the customer with base or wall fastening. The input cable terminals are located at the top of the unit whereas the motor cable terminals are located at ...

### [40 ISU ACS800 Hardware . PDF . Power Inverter](#)

The ACS800 Hardware Manual provides detailed information on the ACS800-207 cabinet-installed IGBT supply units, including operational ...



### [EN / ACS800-07 \(+V992\) drives \(500-2800 kW\) hardware ...](#)

There is one panel on the cabinet door which communicates with the inverter unit by default. However, the panel link is also wired to the control board of the supply unit.



### [EN / ACS800-07/U7 Drives \(45 to 560 kW, 50 to 600 hp\) ...](#)

When removing the module from the cabinet and manoeuvring it outside the cabinet, prevent it from toppling over by securing it. The drive module is heavy and has a high centre of gravity.



### [EN / ACS800-01/U1 Drives Hardware Manual \(0.55 to 200 ...](#)

Also, when the supply power is switched off and the inverter is stopped, a rotating permanent magnet motor feeds power to the intermediate circuit of the drive and the supply connections ...



### [50 Inverter ACS800 Hardware , PDF , Power Inverter , Mains ...](#)

The ACS800 Hardware Manual provides comprehensive information on the ACS800-107 Cabinet-built Inverter Units, detailing specifications from 1.5 to 5340 kW. It includes sections on ...



### Lithium battery parameters

Product capacity: 100Ah

Product size: 135\*197\*35mm

Product weight: 1.82kg

197mm  
/7.7in

Product voltage: 3.2V

internal resistance: within 0.5



### [ABB ACS800 Cabinet Installation And Operating ...](#)

It is to be installed into a cabinet by the customer with base or wall fastening. The input cable terminals are located at the top of the unit whereas the ...

### [Acs800-207 Cabinet Installed IGBT Supply Units ...](#)



information is valid for cabinet-installed IGBT supply units (ACS800-207), and IGBT supply modules (ACS800-104) if they are ...



### [EN / ACS800 Standard Control Program Firmware Manual](#)

ACS800 Firmware Manual ACS800 Standard Control Program 7.x ACS800 Standard Control Program 7.x

### [Repair or Refurbishment of ACS800-CABINET INVERTER UNIT](#)

Buy Repair or Refurbishment of ACS800-CABINET INVERTER UNIT and other wind turbine repaired and refurbished parts suitable for Gamesa, GE, Vestas, Siemens, Nordex G80.



### **ABB**

Before working inside the cabinet, isolate the input cables and busbars from the main supply with the disconnecting device at the distribution board or with the disconnecter of the supply ...

### [ABB ACS800 Cabinet Installation And Operating Instruction](#)

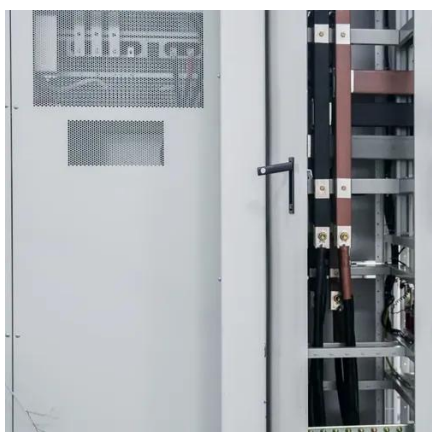


View and Download ABB ACS800 cabinet installation and operating instruction online. Drive Modules. ACS800 industrial electrical pdf manual download. Also for: Acs800-04, Acs800 ...



### [ABB ACS800 INVERTER HARDWARE MANUAL . ManualsLib](#)

Inverter module hardware The ACS800-104 range of inverter modules contains components for building the inverter unit (s) of a common DC bus system drive. The chapter ACS800-104 ...



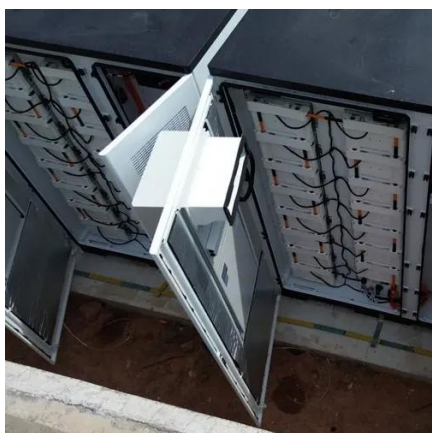
### [ABB industrial drives](#)

Higher power is needed, for example, in high power applications where it gives more drive flexibility to connect drive units to the same DC bus, or for high overload requirements. ...



### [ACS880-104LC liquid-cooled inverter modules . ABB](#)

ACS880-104LC liquid-cooled inverter modules offer flexible motor control and cabinet integration, built on ABB's all-compatible drive architecture.



### [Regenerative AC drive, cabinet-built](#)



The ACS800-17 offers you a complete regenerative drive in a single, compact cabinet-built package. The drive includes everything that is needed for regenerative operation, including ...



### [50 Inverter ACS800 Hardware , PDF , Power ...](#)

The ACS800 Hardware Manual provides comprehensive information on the ACS800-107 Cabinet-built Inverter Units, detailing specifications from 1.5 ...

### [ACS800-307& ACS800-507 Cabinet Installed DSU ...](#)

ACS800-307& ACS800-507\_Cabinet\_Installed\_DSU\_User\_Manual - Free download as PDF File (.pdf), Text File (.txt) or read online for free.



### [ACS800-02/U2 Hardware Manual](#)

ACS800-02 with enclosure extension: The main switch on the cabinet door does not remove the voltage from the input busbars of the drive. Before working on the drive, isolate the whole drive ...

### [ABB ACS800 HARDWARE MANUAL Pdf ...](#)



View and Download ABB ACS800 hardware manual online. ACS800-07 (+V992) drives (500 to 2800 kW). ACS800 dc drives pdf manual download.



[ABB ACS800 HARDWARE MANUAL Pdf Download . ManualsLib](#)

ACS800-07 (+V992) ACS800-07 (+V992) is a cabinet-mounted drive for controlling AC motors. Cabinet line-up The drive consists of several cubicles that contain the supply and motor ...

### ABB Library

ACS800 Single Drives[Classic] ACS800-37 - Cabinet-built low harmonic drive[Classic] brightness\_1Document kind Agreements expand\_more Agreement Group company ...





## Contact Us

---

For inquiries, pricing, or partnerships:

<https://www.zawojcsolina.pl>

Phone: +48 22 173 6647

Email: [info@zawojcsolina.pl](mailto:info@zawojcsolina.pl)

Scan QR code for WhatsApp.

