



Automatic control system of wind power plant

Warranty
10 years

LiFePO₄

Intelligent BMS

Wide Temp:
-20°C to 55°C





Automatic control system of wind power plant



[Wind Power Plants Control Systems Based on SCADA System](#)

In this chapter, an overview of SCADA at the wind power plant is presented, and operational concerns are addressed and examined. Notes on future trends will be provided. Finally, ...

[Research and development of automatic control system of wind power plant](#)

The article suggests nonlinear structural control scheme of synchronous and asynchronous electrical machine with wound rotor, which optimally meet the appropriate energy-momentum ...



[Wind Turbine Control Methods](#)

This document explores the fundamental concepts and control methods/techniques for wind turbine control systems. Wind turbine control is necessary to ensure low maintenance ...



[Control and Automation of Wind Energy Systems](#)

Abstract Wind turbines (WT) or several WTs combined in a wind power plant (WPP) are complex systems whose operation requires extensive automation of both the ...



[Wind Power Plants Control Systems Based on SCADA System](#)

The objective of this chapter is to introduce the state of the art technology in wind power plant control and automation. This chapter starts with a historical background about ...



[An overview of control techniques for wind turbine systems](#)

This research paper reviews the various control methods associated with wind energy control.



[Wind Turbine Control Systems . Wind Research](#)

At the National Wind Technology Center, researchers design, implement, and test advanced wind turbine controls to maximize energy ...



[Aalborg Universitet Wind Power Plant Control](#)



Wind Power Plant Control - An Overview. In Proceedings of the 9th International Workshop on Large-Scale Integration of Wind Power into Power Systems Energynautics GmbH.



[Wind Turbine Control Systems: Current Status and Future ...](#)

The Scope Discussing dynamic control of wind turbines. Rapid control of the turbine during operation. Not supervisory control (safety systems, fault monitoring, etc). Primarily focused on ...

[Advances in model predictive control for large-scale wind power](#)

This paper details the role of MPC technology in multi-level and multi-objective control within the wind power sector, aiming to help engineers and scientists understand its ...



[Wind Turbine Control Systems: Current Status and Future ...](#)

Two major systems for controlling a wind turbine. Change orientation of the blades to change the aerodynamic forces. With a power electronics converter, have control over generator torque. ...



[Controlling Wind Turbines for Secondary Frequency ...](#)



A wind turbine with a control system developed to provide active power ancillary services can be used to provide frequency regulation services. Simulations have been performed to determine ...



[Active Power Control of Wind Power Plants for Grid Integration](#)

Abstract Increasing penetrations of intermittent renewable energy sources, such as wind, on the utility grid have led to concerns over the reliability of the grid. One approach for ...

[Wind Power Plants Control Systems Based on ...](#)

In this chapter, an overview of SCADA at the wind power plant is presented, and operational concerns are addressed and examined. ...



[Power Plant Controller](#)

Emerson's Power Plant Controller boosts solar farm efficiency with real-time monitoring and predictive analytics, lowering costs and enhancing grid ...

[Power Plant Controllers: Typical Control ...](#)



A look at typical control requirements for power plant controllers including production, in terms of megawatts and mega-VARs, (active and ...



[Optimal Automatic Generation Control with Hydro, Thermal, Gas, and Wind](#)

This paper explores automatic generation control (AGC) of a more realistic 2-area multi-source power system comprising hydro, thermal, gas, and wind energy sources-based ...

[Understanding Wind Farm Control Systems: Optimization, Safety, ...](#)

Learn how these systems manage varying wind conditions, enhance power generation, and integrate with grid systems while addressing predictive maintenance and ...



[Wind Power Plants Control Systems Based on SCADA System](#)

In this chapter, an overview of SCADA at the wind power plant is presented, and operational concerns are addressed and examined. Notes on future trends will be provided. ...

[Automatic Generation Control in Modern Power ...](#)



The results reveal that integration of wind power and electric vehicles alongside thermal power plants can effectively reduce real-time ...

- ✓ LIQUID/AIR COOLING
- ✓ INTELLIGENT INTEGRATION
- ✓ PROTECTION IP54/IP55
- ✓ BATTERY /6000 CYCLES

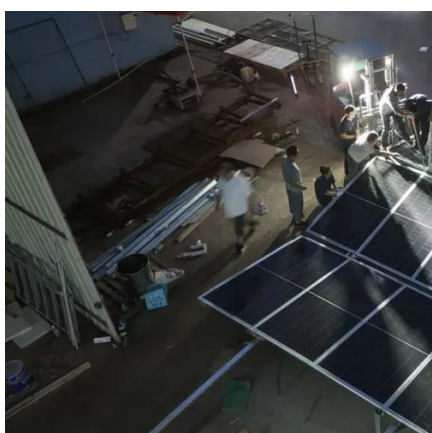
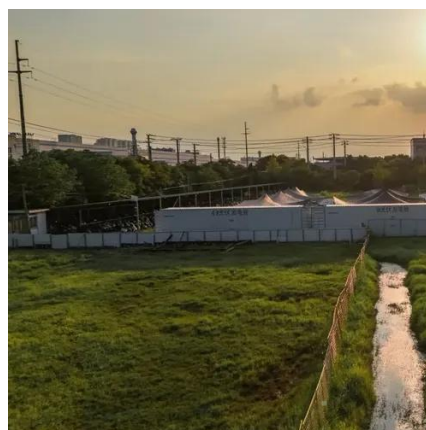


[Wind Turbine Control Systems , Wind Research](#)

The tool allows researchers and wind power plant designers to examine and minimize the impact of turbine wakes on overall plant ...

[WIND POWER PLANT AUTOMATIC CONTROL SYSTEM ...](#)

The article discusses issues aimed at creating an automatic control system for a sailing wind power station, which is designed to increase the productivity, ease of operation and reliability ...



[Autonomous Power Plant](#)

The vision of power plants operating autonomously is about to become reality. Already plants can operate several days unsupervised. Now digital twins, Big Data and AI are ...

[Wind Turbine Control Systems , Wind Research , NLR](#)



At the National Wind Technology Center, researchers design, implement, and test advanced wind turbine controls to maximize energy extraction and reduce structural dynamic ...



[Research and development of automatic control system of wind power plant](#)

When creating a wind energy plant is necessary to solve many problems, most important of which is to harmonize the propeller and the generator in terms of maximum energy effect, and stable ...



[Power Plant Control in Large Scale PV Plants. Design, ...](#)

As a result, new grid codes are appearing or being updated, forcing wind and PV power plants to provide grid support [5-10]. The most demanding grid codes are normally those of island ...



[Optimization of the automatic control system for the maximum power](#)

The presented work performed control system optimization of the proposed hybrid wind-solar system, which enhanced significantly efficiency of its application and performance ...



[Research and development of automatic control system of wind power plant](#)



When you create a wind energy plant, you must solve many problems, most important of which is to harmonize the propeller and the generator in terms of maximum effect ...





Contact Us

For inquiries, pricing, or partnerships:

<https://www.zawojcsolina.pl>

Phone: +48 22 173 6647

Email: info@zawojcsolina.pl

Scan QR code for WhatsApp.

