



Base station of cabinet network





Overview

A typical communication base station combines a cabinet and a pole. The cabinet houses critical components like main base station equipment, transmission equipment, power supply systems, and battery banks.

A typical communication base station combines a cabinet and a pole. The cabinet houses critical components like main base station equipment, transmission equipment, power supply systems, and battery banks.

A base station cabinet is like a strong box for important telecom equipment. It keeps devices safe from bad weather, dirt, and damage. Think of it as a secure home that helps a telecom base station work well. These cabinets are very important for modern networks, like standalone and non-standalone.

A typical communication base station combines a cabinet and a pole. The cabinet houses critical components like main base station equipment, transmission equipment, power supply systems, and battery banks. Meanwhile, the pole serves as a mounting point for antennas, Remote Radio Units (RRUs), and.

A base station cabinet is a protective enclosure for the sensitive communication equipment that keeps mobile networks running. It protects the radios, transmission modules, power systems, batteries, and monitoring devices against bad weather, temperature variations, and security vulnerabilities.

Base station (or base radio station, BS) is – according to the International Telecommunication Union 's (ITU) Radio Regulations (RR) [1] – a " land station in the land mobile service." A base station is called node B in 3G, eNB in LTE (4G), and gNB in 5G. The term is used in the context of mobile.

Outdoor communication cabinets, also known as outdoor enclosures , are specialized equipment directly exposed to natural climatic conditions, typically made from metal or high-strength non-metallic materials. Their primary design objective is to provide a stable and secure physical operating space.

A base station represents an access point for a wireless device to communicate within its coverage area. It usually connects the device to other networks or devices through a dedicated high bandwidth wire of fiber optic connection. Base



stations typically have a transceiver, capable of sending and.



Base station of cabinet network



[Base Stations and Energy Levels](#)

[breadcrumb] Cellular Base Stations and Energy Levels Mobile communications work by using low power radio waves to carry ...

Base station

Computer networking In the area of wireless computer networking, a base station is a radio receiver/transmitter that serves as the hub of the local ...



[Base Stations and Energy Levels](#)

[breadcrumb] Cellular Base Stations and Energy Levels Mobile communications work by using low power radio waves to carry speech and data. When data is transferred, the ...



Huawei BTS 3900

The base station cabinet contains as many as six RF modules. These multicarrier modules support both Huawei's GSM-R 5.0 and the company's enterprise LTE (eLTE). Use of this multi ...



[What is a Base Station Cabinet](#)

A base station cabinet protects telecom equipment, ensures stable power, cooling, and security, and supports 4G, 5G, IoT, and emergency networks.

[14U Outdoor Base Station Cabinet](#)

If you're looking for an 14U Outdoor Base Station Cabinet that can protect your valuable wireless equipment, we have just what you need.



[Outdoor Communication Cabinets and Power Cabinets](#)

Power Cabinets: The Power Backbone of Communication Base Stations. Power cabinets, especially integrated power cabinets designed for 5G communication, are the core equipment ...



[RBS \(radio base station\)](#)



A Radio Base Station (RBS), also known as a base transceiver station (BTS), is a key component of a cellular network infrastructure. It serves as the interface between mobile ...



[What is a Base Station Cabinet?](#)

Learn what a base station cabinet is, how it works, components, benefits, and why outdoor telecom cabinets are crucial for reliable communication networks.

[Quick guide: components for 5G base stations and antennas](#)

Base stations A 5G network base-station connects other wireless devices to a central hub. A look at 5G base-station architecture includes various equipment, such as a 5G ...



[Complete Guide to 5G Base Station Construction](#)

Explore how 5G base stations are built--from site planning and cabinet installation to power systems and cooling solutions. Learn the ...

[What is a Base Station Cabinet](#)



A base station cabinet protects telecom equipment, ensures stable power, cooling, and security, and supports 4G, 5G, IoT, and ...



Cell sites and cell towers in a mobile cellular network

A cell site is a location or "site" where a mobile network operator installs a 2G, 3G, 4G or 5G radio base station (cell tower). ...

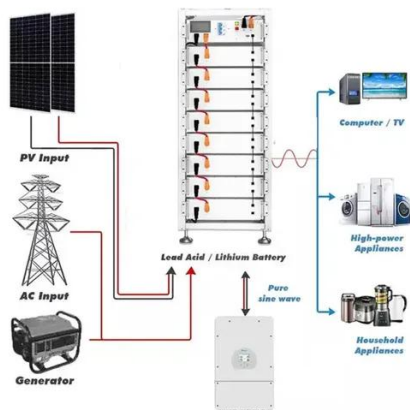
Huawei BTS 3900

The base station cabinet contains as many as six RF modules. These multicarrier modules support both Huawei's GSM-R 5.0 and the ...



What are the base station energy storage cabinets? , NenPower

Base station energy storage cabinets are critical components of telecommunications infrastructure designed to ensure reliable power supply, support ...



Process of Installing a Base Transceiver Station ...



Installing a Base Transceiver Station (BTS) is a critical step in building mobile communication networks. Here's a step-by-step guide to ...



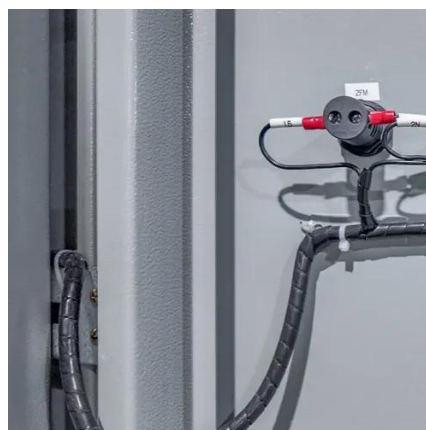
base station in 5g

A 5G base station, also known as a gNodeB (gNB), is a critical component of a 5G network infrastructure. It plays a central role in ...



[Macro Base Station - Prescient Networks and ...](#)

The base station cabinet contains as many as six RF modules. These multicarrier modules support GSM-R 5.0 and the enterprise LTE (eLTE). ...



[What Is A Base Station?](#)

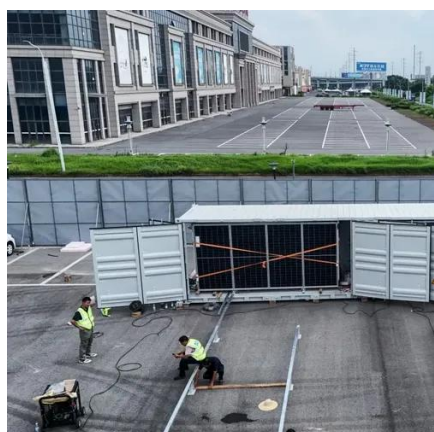
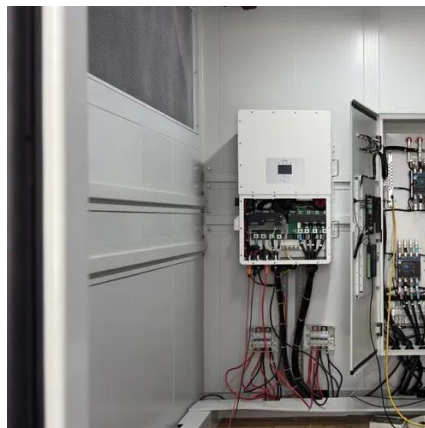
A base station is an integral component of wireless communication networks, serving as a central point that manages the ...



[Understand Cellphone Basestation Technology » ...](#)



Understand the major elements within a cellphone or mobile phone base station, what each element does and how the technology is evolving to ...



[What is a base station? . FiberMall](#)

The electromagnetic waves emitted by base stations and mobile phones are like air, filling us all around. Everyone knows mobile ...



Contact Us

For inquiries, pricing, or partnerships:

<https://www.zawojcsolina.pl>

Phone: +48 22 173 6647

Email: info@zawojcsolina.pl

Scan QR code for WhatsApp.

