



Battery cabinet dimensions and weight





Overview

Was this helpful?

.

Was this helpful?

.

The PWRcell™ Battery Cabinet is a Type 3R smart battery enclosure that allows for a range of storage configurations to suit any need. DC-couple to Generac PWRzone solar or PWRgenerator. No other smart battery offers the power and flexibility of PWRcell. The PWRcell Battery Cabinet allows system.

tery Capacitor Switch and Fuses. Bags without notice. All illustrations, descriptions, dimensions and weights in this catalogue are for guidance and cannot be held in .

Was this helpful?

.

Power BC55 Battery Cabinet is a top terminal battery cabinet that can support system sizes from 80kVA-2,000kVA. The BC55 is primarily used to support large co-location data centers, enterprise data centers, large healthcare facilities, financial institutions, utility systems, and large.

The Model BC Battery Cabinet is UL Listed and finished in textured red or beige to match the various Gamewell-FCI control panels. The cabinet will house up to four (4) model B-31 or two (2) model B-55 batteries. The heavy duty cabinet, constructed of 16 gauge steel, is phosphate treated and primed.

Have you ever calculated how much floor space your battery cabinets truly require?

In Q2 2024, a surprising 68% of industrial facilities reported underutilized energy storage capacity directly linked to improper dimension planning. Let's dissect this



silent productivity killer. Industry data.



Battery cabinet dimensions and weight



12.8V6Ah

- Nominal voltage (V):12.8
- Nominal capacity (ah):6
- Rated energy (WH):76.8
- Maximum charging voltage (V):14.6
- Maximum charging current (a):6
- Floating charge voltage (V):13.6~13.8
- Maximum continuous discharge current (a):10
- Maximum peak discharge current @10 seconds (a):20
- Maximum load power (W):100
- Discharge cut-off voltage (V):10.8
- Charging temperature (°C):0~50
- Discharge temperature (°C):-20~+60
- Working humidity: <95% RH (non condensing)
- Number of cycles (25 °C, 0.5C, 100%doD): >2000
- Cell combination mode: 32700-4-1p
- Terminal specification: T2 (6.3mm)
- Protection grade: IP65
- Overall dimension (mm):90*70*107mm
- Reference weight (kg):0.7
- Certification: un38.3/msds




[Space Age Electronics, Inc.](#)

When your professional installation requires battery backup storage compliant with NFPA 72 (1-5.2.9), the BCA is your ideal solution. With the

...

[CK-10 Battery Cabinet](#)

The CK Series battery cabinets are designed to be integrated with top terminal, Valve Regulated Lead Acid (VRLA) batteries for Uninterruptible Power Supply (UPS) applications. These ...



Microsoft Word

The maximal weight that one shelf can support is 500 kg (equally distributed).

[PWRcell 2 Battery Cabinet](#)

The PWRcell 2 Battery Cabinet can be configured for 9-18 kWh of storage capacity using 3.0 kWh battery modules. Suitable for indoor and outdoor wall mount1 with NEMA 3R rating. The ...



[Modular Battery Cabinet Specifications](#)

Modular Battery Cabinet Weights and Dimensions
NOTE: One battery module weighs approximately 32 kg (70.5 lbs).



[Galaxy Lithium-ion Battery Cabinet Weights and Dimensions](#)

Weight kg (lbs) Height mm (in) Width mm (in) Depth mm (in)
LIBSESMG10IEC 355 (782) 1970 (77.56) 650 (25.59) 587 (23.11)
LIBSESMG10UL 355 (782) 1970 (77.56) 650 (25.59) 587 ...



[Battery Cabinet Dimensions Guide , Huijue Group E-Site](#)

Modern battery cabinet dimensions aren't just about housing cells. The IEC 61427-1 standard now mandates 11% minimum airflow gaps - but did you know lithium-ion chemistries ...



[Modular Battery Cabinet Weights and Dimensions](#)

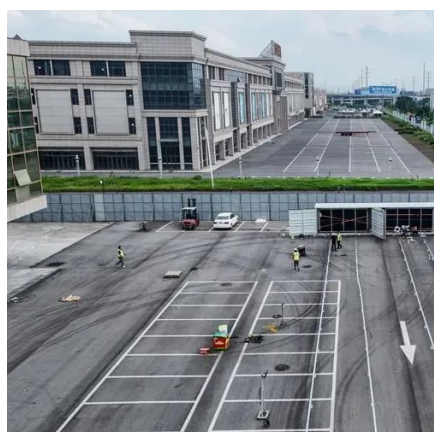


Was this helpful?



[Liebert ITA2 External Battery Cabinet System](#)

Buy Liebert ITA2 External Battery Cabinet System at SHI. See detailed specifications and benefit from expert support. Shop IT hardware and ...



[BC55 Battery Cabinet Data Sheet](#)

C& C Power BC55 Battery Cabinet is a top terminal battery cabinet that can support system sizes from 80kVA-2,000kVA. The BC55 is primarily used to support large co-location data centers, ...



Microsoft Word

Battery cabinet systems are very heavy. Total weight of a loaded cabinet can exceed 6100 lbs. Use at least 3 people when unloading and setting equipment in place. It is imperative that only ...



[BC Series, Batteries and Cabinets Data Sheet](#)



The cabinet will house up to four (4) model B-31 or two (2) model B-55 batteries. The heavy duty cabinet, constructed of 16 gauge steel, is phosphate treated and primed with zinc chromate ...



Specifications

Classic Battery Cabinet Specifications NOTE: Up to two classic battery cabinets (GVSCBC7C, GVSCBC7D, GVSCBC7E, GVSCBC10A2, or GVSCBC10B2) can be connected to the Galaxy ...

BATTERY CABINET

An existing PWRcell Battery Cabinet can be upgraded with additional modules. Use the graphic below and the chart on the back of this sheet to understand what components you need for ...



[Eaton battery solutions brochure](#)

Three-phase UPS battery cabinets The IBC-SW cabinet is our newest and smallest battery cabinet offering, with one large string of batteries inside. This welded cabinet offers flexibility ...

[Cabinet UPS Range Capacity dimensions Cabinet 7 AH. 12 ...](#)



Above battery configurations are given as per Lead Acid Maintenance free batteries NiCd batteries are also available with rack type cabinets Battery connection cables are available ...



[Battery cabinet specifications , Liebert 3000VA, GXT3, 700VA](#)

Download user manual for Liebert 3000VA, GXT3, 700VA. Learn more about Battery cabinet specifications, Operating temperature parameters.



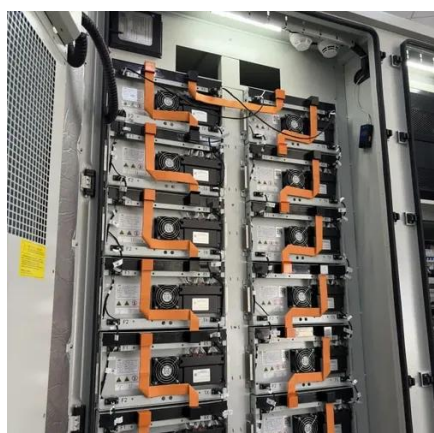
[BC55 Battery Cabinet Data Sheet](#)

The BC55 Battery Cabinet can hold up to forty 620 watts or eighty 200 watt batteries. This NEMA I rated battery cabinet is constructed of welded, heavy-gauge steel and is available in multiple ...



[Omniceil XT Product Equipment Specifications](#)

Battery specifications are provided in the table. Main cabinets have a built-in battery that automatically provides power to the cabinet when main power fails. The battery can power the ...



[Weights and Dimensions for Options](#)

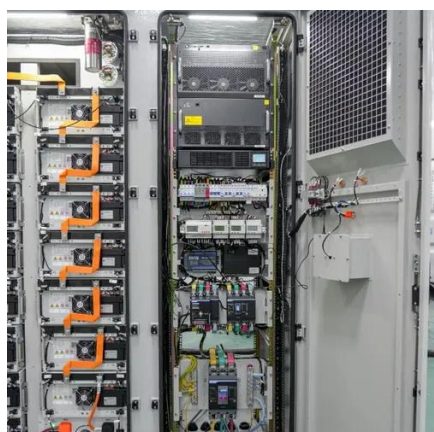


Refer to the hardware options list for the relevant UPS model. NOTE: E3MCBC10D and E3MCBC10E consist of two cabinets. Was this helpful?



BC55 Battery Cabinet

BC55 Battery Cabinet C& C Power's BC55 Battery Cabinet is a top terminal battery cabinet that typically supports UPS (Uninterruptible Power Supply) ...



Battery cabinet UPS

The battery cabinets are available in 5 different mechanical dimensions, are able to contain various combination of Batteries, up to maximum 63 blocks, connected in series and parallel, ...



Product Model

HJ-ESS-215A(100KW/215KWh)
HJ-ESS-115A(50KW 115KWh)

Dimensions

1600*1280*2200mm
1600*1200*2000mm

Rated Battery Capacity

215KWH/115KWH

Battery Cooling Method

Air Cooled/Liquid Cooled



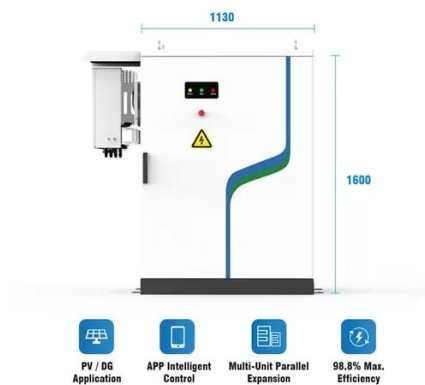
[Weights and Dimensions for Options](#)

Classic Battery Cabinet Shipping Weights and Dimensions Commercial reference Weight kg
Height mm Width mm Depth mm E3MCBC7C 551
1980 815 970 E3MCBC7D 820 1980 815 ...

BATTERY CABINET



BATTERY CABINET PWRcell Battery Cabinet Model #: APKE00028 (includes foot mounting brackets)
Model #: APKE00042 (Battery enclosure only)
3.0kWh PWRcell DCB Battery ...



Specifications

NOTE: Clearance dimensions are published for airflow and service access only. Consult with the local safety codes and standards for additional requirements in your local area.



Contact Us

For inquiries, pricing, or partnerships:

<https://www.zawojcsolina.pl>

Phone: +48 22 173 6647

Email: info@zawojcsolina.pl

Scan QR code for WhatsApp.

