



Battery cabinet installation details





Overview

This installation manual includes full details on installation, wiring, safety, inverter integration, and other key aspects of installing the battery. The companion document to this installation manual is the Generac PWRcell Battery Owner's Manual.

This installation manual includes full details on installation, wiring, safety, inverter integration, and other key aspects of installing the battery. The companion document to this installation manual is the Generac PWRcell Battery Owner's Manual.

ly contact a battery terminal or exposed wire connected to a battery terminal. NEVER allow a metal object, such as a tool, to contact more than one termination or battery terminal at a time, or to imultaneously contact a termination or battery terminal and a grounded ob e battery manufacturer.

See the documents below for guidance on this process: © City of New York. 2025 All Rights Reserved. NYC is a trademark and service mark of the City of New York.

This manual is designed for ease of use, giving the user easy and quick reference to information. This manual uses notice icons to draw attention to important information regarding the safe operation and installation of the battery cabinet. The notice icons used in this manual are explained below.

Our suite of backup power, power distribution and power management products are designed to protect you from a host of threats including power outages, surges, and lighting strikes, and enable you to monitor and control your power infrastructure. We trust that our products will deliver high.

This installation manual provides instructions and recommendations for installing and commissioning the Generac PWRcell® Battery. The PWRcell Battery is designed to house compatible lithium ion battery modules, and connects directly to the PWRcell Inverter and other REbus™ compatible components of.

Installing a battery energy storage system is a significant step toward energy independence. To ensure your system operates safely and efficiently, proper installation is paramount. This involves more than just connecting wires; it requires



careful attention to ventilation and clearance. Adhering.



Battery cabinet installation details

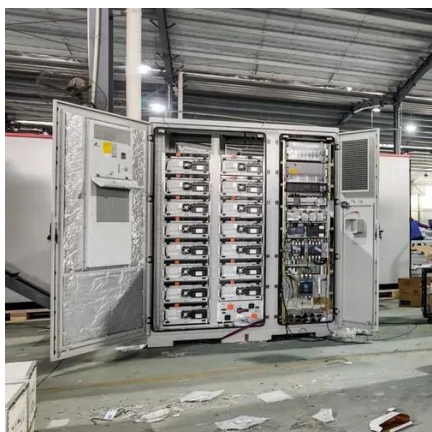


[4400 SERIES UPS Battery Cabinets](#)

The contents of this instruction manual shall not become a part of or modify any prior or existing agreement, commitment, or relationship. The sales contract contains the entire obligation of ...

[Eaton Samsung Gen 3 Battery Cabinet Installation and ...](#)

List of Figures Figure 1. Figure 2. Figure 3. Figure 4. Figure 5. Figure 6. Figure 7. Figure 8. Figure 9. Figure 10. Figure 11. Figure 12. Figure 13. Figure 14



[NetSure\(TM\) 211 Series -48 VDC Battery Cabin](#)

2.2 General Requirements The installer should be familiar with the installation requirements and techniques to be used in securing the battery cabinet to a relay rack or wall.

[Checklist: Venting Clearance and Code Rules for ...](#)

Achieving a safe and compliant battery cabinet installation comes down to a systematic approach. By following a detailed checklist ...



[SL-71958 Vertiv Liebert® APM2 UL EBC User Manual](#)

This manual contains important instructions that should be followed during installation of Vertiv™ Liebert® APM2 Battery Cabinet and accessories. Read this manual thoroughly, paying special ...

U-ENM00044

This manual uses notice icons to draw attention to important information regarding the safe operation and installation of the battery cabinet. The notice icons used in this manual are ...



[Powerware 9390 Integrated Battery Cabinet \(Models IBC-S ...](#)

AChapter 2, "Battery Cabinet Installation Plan and Unpacking" - explains how to prepare the site for the installation of the battery cabinet. It discusses equipment environmental requirements, ...



e-micromobility



See the documents below for guidance on this process: © City of New York. 2025 All Rights Reserved. NYC is a trademark and service mark of the City of New York.



[Tips for Designing Battery Cabinets/Enclosures . SBS Battery](#)

For instance, if a battery, rack and charger are required the system can be designed using a 2 step rack with the charger mounted above, or with a 2-tier rack with the charger mounted to ...

[S2081-00012-4, 2 pages](#)

Refer to Installation Instructions 574-670 for Battery Cabinet installation details. See 4100ES basic panel data sheet S4100-0031 for additional power supply/battery charger information.



[VERTIV LIEBERT EXM 480V USER MANUAL Pdf ...](#)

View and Download Vertiv Liebert EXM 480V user manual online. External Battery Cabinet. Liebert EXM 480V ups pdf manual download.



[-48 VDC Battery Cabinet Installation and User Manual ...](#)



VDC battery cabinet can be mounted in a 23" relay rack or mounted to a wall. The battery cabinet contains one (1) 40 A battery disconnect circuit binets may be daisy chained as shown in ...

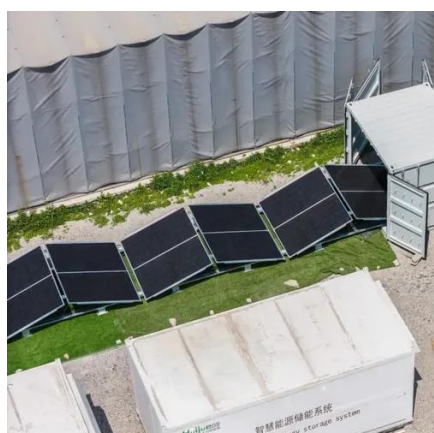


[Installation and Owner's Manual](#)

This installation manual includes full details on installation, wiring, safety, inverter integration, and other key aspects of installing the battery. The companion document to this installation manual ...

[Battery cabinet installation details](#)

BC43 Battery Cabinet Installation, Operation, & Maintenance Manual . 6/17/2013 2 755-00040 R03
Battery Cabinet Breaker or Fuse Size Minimum
Copper Ground Wire Size Up to 200 ...



[Sidewalk E-Bike Battery Swapping and Charging Cabinets 101:](#)

To reduce the fire risk posed by lithium-ion batteries, the City of New York supports the installation of outdoor e-bike battery charging and swapping cabinets on public sidewalks.

[Samsung Gen 2 lithium-ion battery system product specifications](#)



Go through detailed installation guidance in manufacturer installation manual before installing the product. Configuring the BMS system is made through ELP-MON software. Installation of ...



[Liebert® ITA2 Battery Cabinet Installer/User Guide](#)

Depending on the type of battery cabinet, see Figure 2.8 on the facing page for 3U, or see Figure 2.9 on page 17, for 2U, and connect the other ends to Connector A on each of the battery ...



[IBC-S Installation Manual](#)

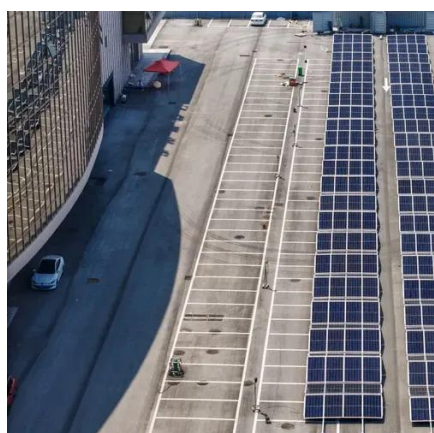
Installation . 23

Modular design,
unlimited combinations in parallel
BUILT-IN DUAL FIRE PROTECTION MODULE



[Battery Cabinets vs. Battery Racks](#)

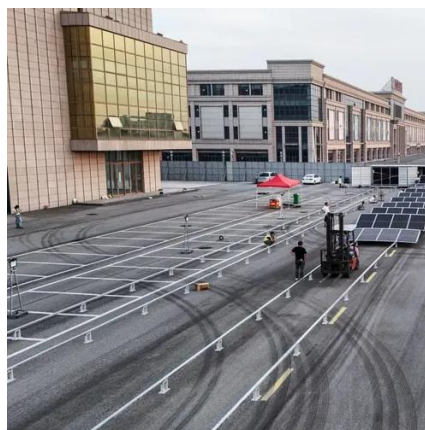
On battery cabinets, the disconnect switch should be mounted in the door to allow the battery to be disconnected from the UPS before the door is opened. This best practice is ...



[Evolve ESS Installation Manual](#)



The AC Battery is expandable with the addition of up to two more battery cabinets. Refer to the manual, "Eguana AC Battery Expansion Cabinet Installation Guide" for more details if your ...

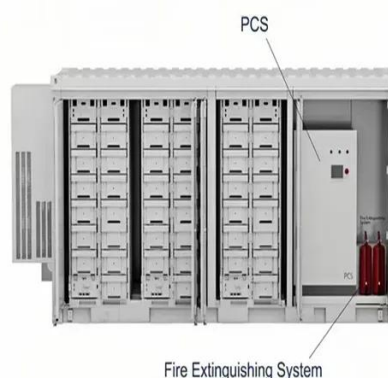


UPS Battery Cabinets

ments defined below. This battery cabinet must be installed according to local and ational regulations. Install the battery cabinet according to the following standards (depending

[Checklist: Venting Clearance and Code Rules for Battery Cabinets](#)

Achieving a safe and compliant battery cabinet installation comes down to a systematic approach. By following a detailed checklist covering clearance, ventilation, and ...



[-48 VDC Battery Cabinet Installation and User Manual ...](#)

Connect the power system's battery cable terminated in an Anderson connector to the first battery cabinet's battery cable terminated in a mating Anderson connector.



[Galaxy Lithium-ion Battery Cabinet Installation and Operation ...](#)



Find support resources for all your needs, in one place.



[Eaton Samsung Gen 3 Battery Cabinet Installation and ...](#)

This manual describes how to install the Eaton Samsung Gen 3 battery cabinet and is divided into chapters. Read and understand the procedures described to ensure trouble-free installation ...



Contact Us

For inquiries, pricing, or partnerships:

<https://www.zawojcsolina.pl>

Phone: +48 22 173 6647

Email: info@zawojcsolina.pl

Scan QR code for WhatsApp.

