



Battery lightning protection classification for solar telecom integrated cabinets





Overview

In this article, we break down the key requirements of the industry standard YD5068-98 - Code for Design of Lightning Protection and Grounding of Mobile Communication Base Stations, and explain how KDST Outdoor Telecom Cabinets help mitigate lightning risks effectively.

In this article, we break down the key requirements of the industry standard YD5068-98 - Code for Design of Lightning Protection and Grounding of Mobile Communication Base Stations, and explain how KDST Outdoor Telecom Cabinets help mitigate lightning risks effectively.

A good grounding system provides a low - resistance path for lightning currents to flow safely into the ground. For a Telecom Power Cabinet, the grounding electrode should be installed correctly. It should be made of high - conductivity materials like copper or galvanized steel. The grounding.

As the first line of defense, outdoor telecom cabinets play a decisive role in lightning protection and grounding. In this article, we break down the key requirements of the industry standard YD5068-98 - Code for Design of Lightning Protection and Grounding of Mobile Communication Base Stations.

Synchro Electricals specializes in manufacturing ACDB and DCDB panels designed for outdoor telecom applications, providing robust lightning and surge protection, efficient power distribution, and compliance with industry safety standards. Our panels safeguard critical telecom equipment while.

Today, lightning and surge protection components, lightning protection structures and surge protection devices are put through their paces in the BET Test Centre by highly qualified specialists in accordance with the relevant standards. Chapter 1 General introduction 7 Chapter 2 The external.

further parts of the standard. It classifies the sources and types of damage to be evaluated and introduces the risks or types of loss to be anticipated as current parameters are defined. These are used as the basis for the selection and implementation of the appropriate protection measures.

A comprehensive guide to telecom battery cabinets provides essential information



on their features, types, selection criteria, installation tips, and innovations in technology. Understanding these aspects is crucial for ensuring reliable power solutions in telecommunications infrastructure. What.



Battery lightning protection classification for solar telecom integrators



[Integrated Solar & Battery Cabinet for Remote Telecom Systems](#)

All-in-one cabinet with solar power and battery storage for remote telecom and monitoring systems. Ideal for off-grid, reliable, autonomous power supply.

[What are the lightning protection measures for a Telecom Power ...](#)

There are different types of SPDs, including Type 1, Type 2, and Type 3. Type 1 SPDs are used for direct lightning strike protection. They can handle very high - energy surges. Type 2 SPDs ...



[Lightning protection guide](#)

Just like its predecessors, this edition of the lightning protection guide offers assistance in installing professional lightning protection systems in line with the very latest standards.

[Outdoor Communication Cabinets and Power ...](#)

Outdoor cabinets ensure network stability and protect communication equipment with reliable power management.



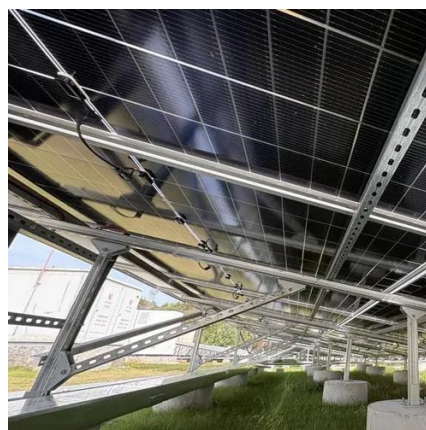
[Outdoor Telecom Panel Lightning Protection with ...](#)

Yes, ACDB/DCDB panels from Synchro Electricals are designed for hybrid and remote sites, integrating with battery backups, renewable energy ...



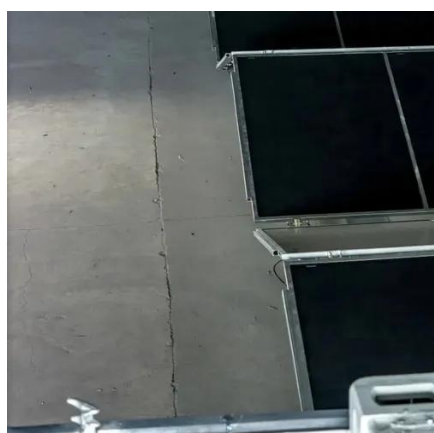
[A Comprehensive Guide to Telecom Battery Cabinets](#)

A comprehensive guide to telecom battery cabinets provides essential information on their features, types, selection criteria, installation tips, and innovations in technology.



[BS EN/IEC 62305 Lightning protection standard](#)

In line with BS 6651, the new standard recommends a single integrated earth termination system for a structure, combining lightning protection, power and telecommunication systems.



[Integrated Outdoor Telecom & Solar Cabinet with Cooling](#)



Integrated outdoor cabinet for telecom and solar with cooling and battery compartments for reliable protection and energy management.

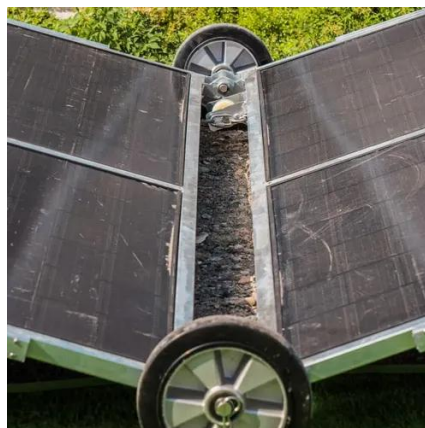


[Lightning protection classes](#)

However, based on the total comprehensive analysis of the existing regulations, it is possible to make a conditional classification of lightning protection objects according to lightning ...

[Weatherproof Battery Enclosures for Solar & 12v ...](#)

Protect your solar batteries with AZE Telecom's weatherproof battery enclosures. Explore durable outdoor 12v battery storage, pole-mounted ...



[Protecting Electrical PV Systems from the Effects of Lightning](#)

Despite the high lightning risk that PV systems are exposed to, they may be protected by the appropriate application of Surge Protection Devices and a Lightning Protection System.

[Technical reference Key points](#)



The concept of the Lightning Protection Zone (LPZ) was introduced within IEC/BS EN 62305 particularly to assist in determining the protection measures required to establish protection ...

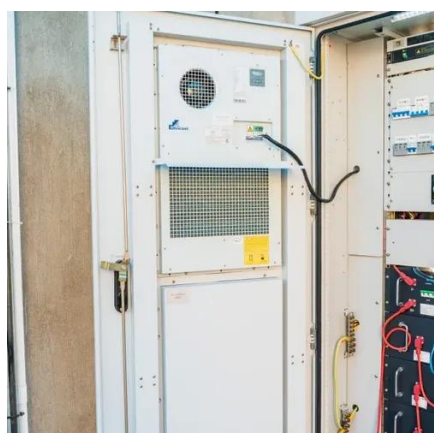


[For Telecom Applications](#)

Hybrid Of-Grid Solar Solution for Telecom With the demand for network access and mobile broadband consistently growing, the telecom sector is now experiencing an increasing need to ...

[Lightning & Surge Protection for Solar & Battery Systems](#)

This article delves into the science behind lightning protection, with a focus on surge protection devices (SPDs) from reputable manufacturers like Midnite Solar and Delta, ...



[How to Safeguard Mobile Base Stations from Lightning?](#)

In this article, we break down the key requirements of the industry standard YD5068-98 - Code for Design of Lightning Protection and Grounding of Mobile Communication Base Stations, and ...

[Telecom Cabinets: Equipment Protection and Cost Optimization](#)



Telecom cabinets serve as the first line of defense, offering environmental control, physical protection, and integrated systems that preserve uptime and lower operational expenditures.



[Outdoor Battery Cabinet](#)

Each cabinet features IP54-IP65 ingress protection, ensuring it functions as a weatherproof battery enclosure suitable for telecom stations, solar applications, and industrial sites.



[Outdoor Telecom Panel Lightning Protection with ACDB/DCDB](#)

Yes, ACDB/DCDB panels from Synchro Electricals are designed for hybrid and remote sites, integrating with battery backups, renewable energy sources, and lightning protection systems ...



[Lightning protection classes](#)

However, based on the total comprehensive analysis of the existing regulations, it is possible to make a conditional classification of lightning ...



[What are the lightning protection measures for a Telecom Power Cabinet](#)



There are different types of SPDs, including Type 1, Type 2, and Type 3. Type 1 SPDs are used for direct lightning strike protection. They can handle very high - energy surges. Type 2 SPDs ...





Contact Us

For inquiries, pricing, or partnerships:

<https://www.zawojesolina.pl>

Phone: +48 22 173 6647

Email: info@zawojesolina.pl

Scan QR code for WhatsApp.

