



# Comparison between 150kW server rack and ordinary server rack





## Overview

---

While a standard rack uses 7-10 kW, an AI-capable rack can demand 30 kW to over 100 kW, with an average of 60 kW+ in dedicated AI facilities. This article provides a condensed analysis of these costs, key efficiency metrics, and optimization strategies.

While a standard rack uses 7-10 kW, an AI-capable rack can demand 30 kW to over 100 kW, with an average of 60 kW+ in dedicated AI facilities. This article provides a condensed analysis of these costs, key efficiency metrics, and optimization strategies.

While a standard rack uses 7-10 kW, an AI-capable rack can demand 30 kW to over 100 kW, with an average of 60 kW+ in dedicated AI facilities. This article provides a condensed analysis of these costs, key efficiency metrics, and optimization strategies. Data center power density, measured in.

To help data center architects and IT staff in those duties are modern server racks, ranging from inexpensive simplified units to fully integrated cabinets with hot-swappable capabilities and air-conditioned enclosures. Choosing the best server racks starts with understanding all the options.

Learn how to choose the right server rack cabinet by sizing to needs, managing cooling & power, ensuring strength, planning cable access, and balancing cost vs future growth. What Is a Server Rack Cabinet?

A server rack cabinet is a metal enclosure that holds servers, switches, UPS units, and other.

Optimizing kW per rack can lower costs, improve sustainability, and ensure reliable performance. This guide explains why kW/rack matters, how to calculate it, and best practices for managing power. What is kW per Rack?

Kilowatt per rack (kW/rack) is the power assigned to a server rack in a data.

A kilowatt (kW) measures the rate of power consumption at a specific moment, while a kilowatt-hour (kWh) measures the total energy consumed over time. For example, if a server rack uses 5 kW of power continuously for one hour, it



consumes 5 kWh of energy. Knowing the difference helps you track.

Unleashing 150kW in a single server rack sounds like something from a science fiction film, but it's the reality of modern, high density cooling demands. Imagine the raw power, the potential for chaos, and the sheer engineering challenge of containing that much energy in such a confined space. This.



## Comparison between 150kW server rack and ordinary server rack



### [What are Rack Servers? , HPE](#)

Rack servers, computer servers designed to be mounted in a server rack, are used in enterprise computing and designed to be scalable, reliable, and ...

### [Server Rack vs. Chassis: What's the Difference, ....](#)

This is likely part of the reason why the difference between server racks and server chassis can seem confusing. If a server rack is a ...

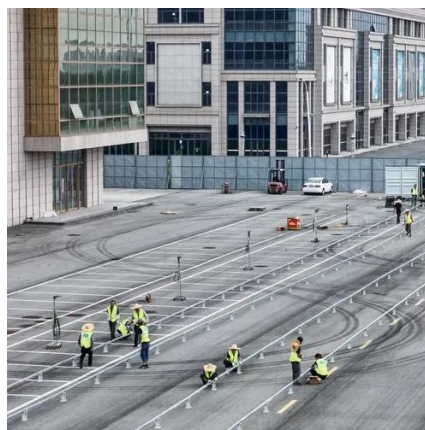


### [kW per Rack Explained: Optimize Colocation ...](#)

Learn how kW per rack impacts colocation pricing, energy efficiency, and performance. Discover best practices to manage power, ...

### [How Many Kilowatts Does a Server Rack Use?](#)

A server rack is a framework designed to house multiple pieces of computing equipment-primarily servers, networking devices, and storage systems. Since each piece of equipment consumes ...



### [What is the difference between a rack and a server?](#)

Rack scalability is physical; server scalability is computational. A fully loaded rack can't expand beyond its U-height--hence data centers add rows of racks.

### [Server Racks: Everything You Need To Know](#)

Based on the use of these sever racks, rack enclosures and open-frame racks are further divided into floor-standing server rack and wall-mount ...



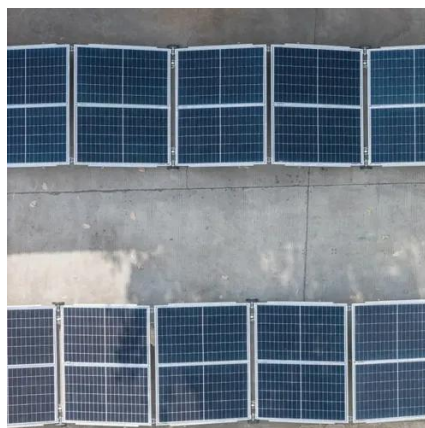
### [Exploring Data Center Rack Density , Average kW Per Rack](#)

According to AFCOM's 2024 State of the Data Center Report, average rack density now sits around 12 kW. That's 2x the 6.1 kW per rack they initially reported in 2016. ...

### [How to Choose the Best Server Racks](#)



Choosing the best server racks starts with understanding all the options available and how they could meet your current and future networking needs. What Is a Network or Server Rack?



### [How We Tame 150kW in a Single Server Rack](#)

Managing the heat, delivering sufficient power, optimizing limited space, and navigating the operational complexities of a 150kW rack require a fundamentally different ...

### [Difference between Rack servers and Blade Servers](#)

The main difference between rack server and blade server is a rack server is an independent server installed in the case, while a blade ...



### [Server Rack Power Consumption Made Simple: A Practical Guide](#)

Create a simple sheet to log server wattage, rack power consumption, and total facility usage. Use formulas to calculate safety margins and future capacity needs.

### [Server Rack Buying Guide: Everything You Need To Know](#)



To ensure that you make the best decision possible, this comprehensive guide will help you differentiate the types of server racks, better understand rack size and weight, and ...



### [The Ultimate Buying Guide: Understanding and Choosing Server Rack](#)

Learn how to choose the right server rack cabinet by sizing to needs, managing cooling & power, ensuring strength, planning cable access, and balancing cost vs future growth.

### **Ithy**

The comparison between AI servers and normal servers in terms of power consumption reveals a substantial disparity, with AI servers requiring up to 10 times more ...



### [Blade Server vs Rack Server vs Tower Server - ...](#)

While blade servers are more expensive upfront, they can potentially offer operational savings due to centralized infrastructure. ...

### [Server Rack vs Network Rack: Key Differences ...](#)



Compare server racks and network racks for cooling, cabling, and hardware needs. Learn which rack suits your data center design and thermal ...

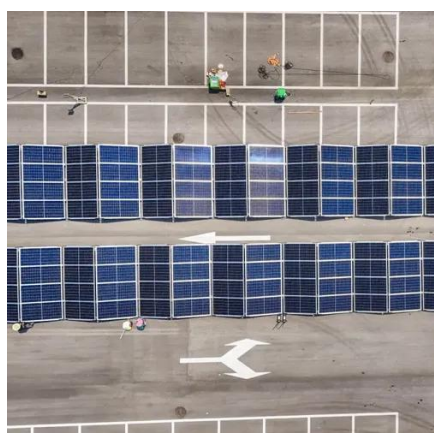


### [Is a Rack Server the Same as a Server Rack? - Unraveling the ...](#)

Rack servers and server racks are distinct. This article explains the crucial difference between the IT hardware and its housing, vital for efficient data center management.

### [Server Rack Power Consumption Made Simple: A ...](#)

Create a simple sheet to log server wattage, rack power consumption, and total facility usage. Use formulas to calculate safety ...



### [Rack Density is Rising](#)

In our 2020 survey, we asked about the most common (modal average) SERVER rack density, which is perhaps a better metric than ...

### [How Many Kilowatts Does a Server Rack Use?](#)



How many kilowatts does a server rack use? This knowledgebase article will help you understand server rack power usage, the factors that influence it, and how to optimize energy efficiency.



### [Server Rack Buying Guide: Wall-Mounted, Floor ...](#)

Discover how to choose the right server rack. Compare wall-mounted, floor-standing, and open frame racks. FS offers integrated rack ...



### [Data Center Rack Power Costs: A Condensed Analysis . Nlyte](#)

While a standard rack uses 7-10 kW, an AI-capable rack can demand 30 kW to over 100 kW, with an average of 60 kW+ in dedicated AI facilities. This article provides a ...



### [Server Rack Vs Server Cabinet](#)

A server rack is an open-frame storage unit typically utilized to preserve essential IT hardware such as servers in a safe and orderly ...



### [What is the difference between a server rack and a network rack?](#)



What is the difference between a server rack and a network rack?, Gometal is China manufacturer & supplier who mainly produces network cabinet, network rack, Server ...



### [Data Center Server Rack Guide \(2026\): Types, Design, Airflow, ...](#)

There are three primary rack types - open-frame racks, enclosed cabinets, and wall-mount racks, each suited for different levels of security, cooling, and equipment density.

### [How to Choose the Best Server Racks](#)

Learn how to choose the right server rack cabinet by sizing to needs, managing cooling & power, ensuring strength, planning cable access, and balancing cost vs future growth.



### [kW per Rack Explained: Optimize Colocation Power & Costs](#)

Learn how kW per rack impacts colocation pricing, energy efficiency, and performance. Discover best practices to manage power, reduce costs, and future-proof your IT ...





## Contact Us

---

For inquiries, pricing, or partnerships:

<https://www.zawojcsolina.pl>

Phone: +48 22 173 6647

Email: [info@zawojcsolina.pl](mailto:info@zawojcsolina.pl)

Scan QR code for WhatsApp.

