



# Custom-made data center cabinets for tunnels with a depth of 800mm





## Custom-made data center cabinets for tunnels with a depth of 800mm



### [Custom Fabricated Data Center Racks & Cabinets . Metalfab Group](#)

Whether you need custom data center racks or subcontracting support for your racking production, we deliver precision-engineered products backed by decades of metal fabrication ...

### [Custom Server Cabinets, Racks, & More . AMCO Enclosures](#)

From initial setup, we'll work with your team to design a cabinet built around your equipment. For more information on our selection of data center cabinets, racks, and other products, please ...



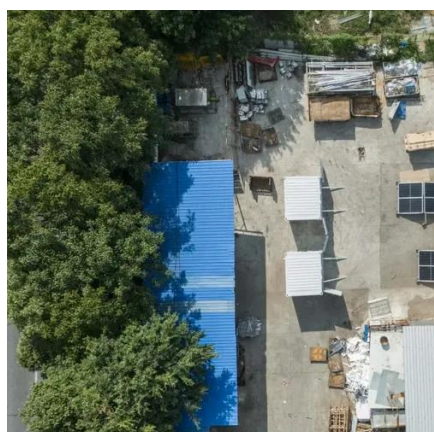
### [BLACKSTONE Standalone 22U 800mm Depth Networking Cabinet ...](#)

The Blackstone BSC 22U 800mm network perforated cabinet does the job for offices and retail environments that require a secure, heavy-duty Standalone storage option for standard 19" ...



### [Data Center Server Rack . Rackmount Solutions](#)

From a budget friendly rack to a high end custom cabinet solution, we can help. Servers come in a wide variety of depths, that's why we carry server ...



### [Infrastone : BLACK-STONE NETWORK : Blackstone Standalone ...](#)

The 22U BSC cabinet supports a maximum weight of 130 lbs. The sturdy welded frame is made of heavy-duty Cold Rolled Steel with a durable, professional Black Powder Coated finish. It's the ...

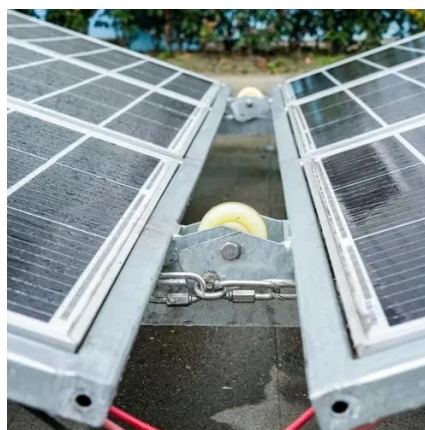


### [SRF 800 Floor Standing Rack Cabinets ? -- ...](#)



### [Network Cabinet Solutions for Data Centers](#)

A highly engineered data center cabinet solution that delivers fast built-to-order configurability, industry-leading strength and scalability, regardless ...



### [Server, Network, & Data Center Racks, Cabinets, & Accessories](#)

Browse server, network, & data center racks, cabinets, shelves, & cable managers from a premier manufacturer of high-quality, scalable IT solutions.



With an overall depth of 800mm, the maximum distance between mounting rails is 700mm (27-1/2?). For drawings and more details, refer to the ...



### [Server and Network Cabinets , Legrand](#)

We have a cabinet solution for any environment, from enterprise and hyperscale data centers, collocations, IT closets, and edge locations. Our turnkey manufacturing facilities offer complete ...



48V 100Ah

### [DATA CENTER CABINETS & RACKS](#)

These deployable, seismic and UL-rated cabinets are fully welded, pre-assembled, and come standard with features such as recessed PDU Cavities, and are configurable with or without ...



### [Racks and Cabinets , nVent HOFFMAN](#)

nVent HOFFMAN provides high quality, configurable racks and cabinets designed for any Data Center and Networking application Wall-mounted cabinets provide networking/server capacity ...



### [BLACKSTONE Standalone 22U 800mm Depth Networking Cabinet ...](#)



The 22U BSC cabinet supports a maximum weight of 130 lbs. The sturdy welded frame is made of heavy-duty Cold Rolled Steel with a durable, professional Black Powder Coated finish. It's the ...



### [1U Vented Rack Shelf for 800mm Depth Cabinets](#)

Sturdx 1U fixed shelf for 800mm depth server cabinets. Vented design ensures airflow and stability for critical network equipment.

### [Racks and Cabinets , nVent HOFFMAN](#)

nVent HOFFMAN provides high quality, configurable racks and cabinets designed for any Data Center and Networking application.



### [42U Server Rack Cabinet, 800mm depth, Glass door and Perf.](#)

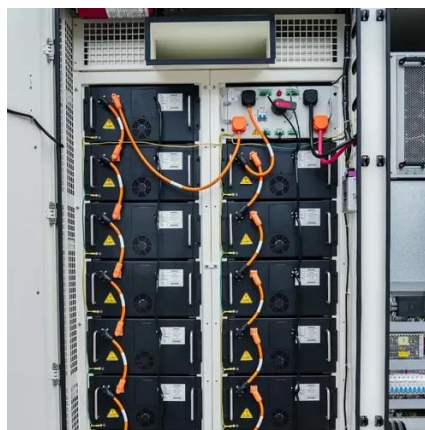
The cabinet also incorporated full-height wire management rails, which made it easier to finish a neat and clean installation. The mounting rail depth is marked and adjustable in 10 mm ...



### [RackSolutions 24U-48U Data Center Cabinet](#)



Fully enclosed server rack cabinets from 24U-48U. Designed for Data Centers. Rack and Stackable. 1070 mm or 1200 mm overall rack depth. In ...



### [Home Networking Cabinet Size Guide: How to Choose the Right Cabinet ...](#)

That's why we've created this comprehensive guide to help you select the perfect cabinet size for your specific project needs. Whether you're setting up a small home office or managing a large ...

### [Server Rack Cabinets to Data Center Design. Find ...](#)

We're experts at delivering custom solutions designed to fit your exact server rack needs, both on time and on budget. From a home server rack to a ...



### [Network Cabinet Solutions for Data Centers . Chatsworth](#)

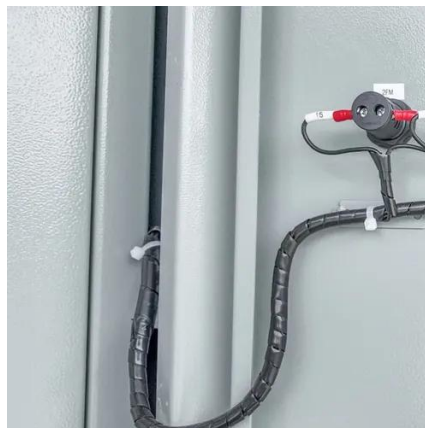
A highly engineered data center cabinet solution that delivers fast built-to-order configurability, industry-leading strength and scalability, regardless of the application.



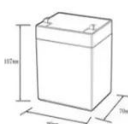

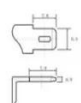
### [Racks and Cabinets in a data center](#)



Size of a cabinet Cabinets vary greatly in shape and size and are commonly defined by the width and depth in millimeters e.g. 800mm x ...



**12.EV6Ah**

- Nominal voltage (V):12.8
- Nominal capacity (Ah):6
- Rated energy (Wh):76.8
- Maximum charging voltage (V):14.6
- Maximum charging current (A):6
- Floating charge voltage (V):13.6-13.8
- Maximum continuous discharge current (A):10
- Maximum peak discharge current @10 seconds (A):20
- Maximum load power (W):100
- Discharge cut-off voltage (V):10.8
- Charging temperature (°C): -20~+50
- Discharge temperature (°C): -20~+60
- Working humidity: <95% R.H (non condensing)
- Number of cycles (25 °C, 0.5c, 100%doD): >2000
- Cell combination mode: 32700-4s1p
- Terminal specification: T2 (6.3mm)
- Protection grade: IP65
- Overall dimension (mm):90\*70\*107mm
- Reference weight (kg):0.7
- Certification: un38.3/msds

### Data Center Cabinets and Racks

Access flexible, customizable cabinet configurations tailored to your unique needs and power source preferences. Secure mission-critical solutions in a technology ecosystem with 24-hour ...

### Custom Server Cabinets, Racks, & More , AMCO ...

From initial setup, we'll work with your team to design a cabinet built around your equipment. For more information on our selection of data center ...



### NavePoint 42U Server Rack Cabinet, 800mm depth, Cable ...

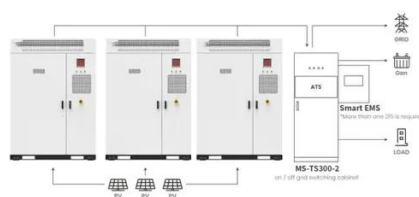
Buy NavePoint 42U Server Rack Cabinet, 800mm depth, Cable Management Top, Glass Door (Commercial Series): 42U Cabinets



### Optimize Data Center Space with Reliable Server Racks and



Starting with flexible, easily installed, adaptable and pre-configured customized server racks and network cabinets saves you costs, footprint and it increases the performance, efficiency, and ...



Application scenarios of energy storage battery products



## Contact Us

---

For inquiries, pricing, or partnerships:

<https://www.zawojcsolina.pl>

Phone: +48 22 173 6647

Email: [info@zawojcsolina.pl](mailto:info@zawojcsolina.pl)

Scan QR code for WhatsApp.

