



Desert solar project energy storage





Overview

By incorporating battery energy storage, the facility stores excess solar energy generated during peak daylight hours and releases it later to balance electricity demand and supply. This innovation reduces strain on the power grid and enhances energy security for California residents.

By incorporating battery energy storage, the facility stores excess solar energy generated during peak daylight hours and releases it later to balance electricity demand and supply. This innovation reduces strain on the power grid and enhances energy security for California residents.

SAN DIEGO (Jan. 31, 2025): EDF Renewables North America (EDFR) and Power Sustainable Energy Infrastructure Inc. (PSEI) today announced that their jointly owned Desert Quartzite Solar+Storage Project achieved operational status in December 2024. The electricity generated from the 375 megawatt.

EDF Renewables North America and Power Sustainable Energy Infrastructure Inc. (PSEI) have officially announced the commercial operation of the Desert Quartzite Solar+Storage Project, a major milestone in California's transition toward sustainable energy. The 375 MWdc/300 MWac solar project, paired.



Desert solar project energy storage



[230MW BESS comes online at Bureau of Land...](#)

A site map of the project. Image: Dudek/BLM/NextEra/Desert Sunlight. A 230MW battery energy storage system (BESS) from NextEra ...

[EDF Renewables North America and Power Sustainable Energy](#)

Desert Quartzite, located on Federal lands administered by the Bureau of Land Management (BLM) in Riverside County, California, is designed to store electricity during peak ...



[Large-scale solar with 600 MWh of storage now operational in ...](#)

Desert Quartzite, a 300 MW / 600 MWh solar-plus-storage project located mostly on Federal lands administered by the Bureau of Land Management (BLM), in Riverside County, ...

[EDF Renewables North America and Power ...](#)

SAN DIEGO (April 16, 2025): EDF Renewables North America is pleased to announce the close of financing for the Desert Quartzite Solar+Storage ...



[EDF Renewables builds 375MW solar-plus-storage in California](#)

EDF Renewables North America has begun operations on a 375MW/600MWh solar-plus-storage project in California. The company announced last week (31st January) that ...



[Recurrent Energy signs two tolling agreements ...](#)

Canadian Solar's subsidiary Recurrent Energy has inked two 20-year tolling agreements with Arizona Public Service Company (APS), ...



[An Immense Solar Project Just Got Canceled Under Trump](#)

The project, known as Esmeralda 7, would have comprised a sprawling network of solar panels and batteries across 118,000 acres of federally owned land in the Nevada desert ...



[Clean Power Alliance's New Solar and Battery Storage Projects ...](#)



Desert Quartzite Solar + Storage Project The Desert Quartzite project, located in Riverside County, is one of the largest solar + storage energy complexes in the state of ...



[EDF Renewables puts Desert Quartzite solar-plus- ...](#)

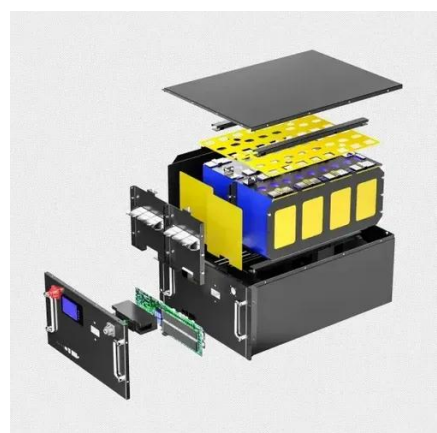
EDF Renewables - a regional subsidiary of French energy giant EDF - did not specify the suppliers of the solar or storage elements ...



48V 100Ah

[EDF Renewables puts Desert Quartzite solar-plus-storage project ...](#)

EDF Renewables North America has begun operations on a 375MW/600MWh solar-plus-storage project in California, US. The company announced last week (31st January) ...



[EDF Renewables North America and Power ...](#)

Desert Quartzite, located on Federal lands administered by the Bureau of Land Management (BLM) in Riverside County, California, is ...

[Desert Quartzite solar and storage project begins operation, ...](#)



Located in Riverside County, California, on federal land managed by the Bureau of Land Management (BLM), the project supports California's aggressive decarbonization targets ...



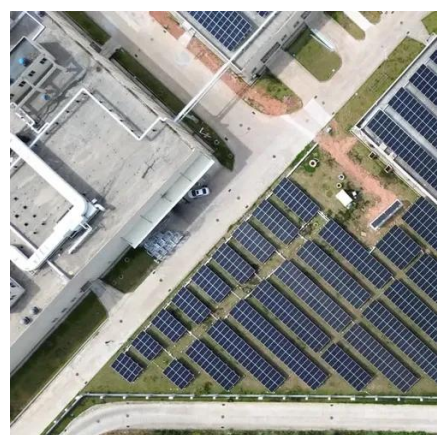
[Desert Quartzite Solar+Storage Project in California Commences](#)

Located on federal land managed by the Bureau of Land Management in Riverside County, California, Desert Quartzite is engineered to capture and store solar energy during ...



[BLM announces Desert Quartzite Solar is fully operational](#)

The Bureau of Land Management today announced the Desert Quartzite Solar facility, located near Blythe in eastern Riverside County, is now fully operational and producing ...



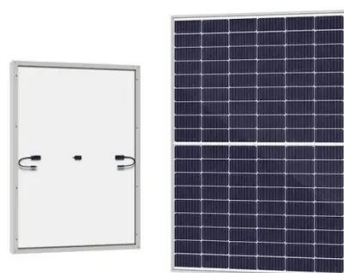
[Large-scale solar with 600 MWh of storage now ...](#)

Desert Quartzite, a 300 MW / 600 MWh solar-plus-storage project located mostly on Federal lands administered by the Bureau of ...

[EDFR and PSEI commence operations of California solar project](#)



EDF Renewables North America (EDFR) and Power Sustainable Energy Infrastructure (PSEI) have announced that their jointly owned Desert Quartzite solar+storage ...



[BLM approves NextEra's 300-MW Sunlight Storage II project in ...](#)

The project will bring the total storage capacity co-located with the 550 MW Desert Sunlight Solar Farm to 530 MW.

[Solar and Batteries Go Big in the Desert](#)

And as it happens, the Mojave is the location of a large new solar power plant integrated with battery storage. The Edwards Sanborn Solar and Energy Storage project ...



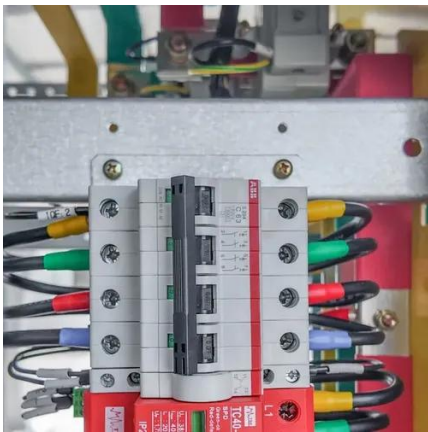
[California approves world's largest solar + storage ...](#)

To start with, California regulators have approved a milestone solar + storage project in Fresno County, plus Cadiz has entered into an ...

[Battery Storage Projects Boost Southern California's Energy ...](#)



Solar power and battery storage are essential for Southern California's energy resilience and sustainability. Together, they ensure a reliable energy supply during outages or ...



[Desert Sunlight Solar Farm](#)

The Desert Sunlight Solar Farm is a 550-megawatt (MW AC) fixed-tilt photovoltaic power station approximately 6 miles (9.7 km) north of Desert ...



Contact Us

For inquiries, pricing, or partnerships:

<https://www.zawojcsolina.pl>

Phone: +48 22 173 6647

Email: info@zawojcsolina.pl

Scan QR code for WhatsApp.

