



Distance between power lines and solar-powered communication cabinets





Overview

To ensure compliance with all applicable standards and regulations, a minimum horizontal distance (setback) of 4.8m is required. No building is permitted under a power line or overhead service line.

To ensure compliance with all applicable standards and regulations, a minimum horizontal distance (setback) of 4.8m is required. No building is permitted under a power line or overhead service line.

The required distance for building near power lines varies based on technical and legal factors. Get a clear overview of how these rules are set and applied. Understanding the minimum distance required between buildings and power lines is an important consideration for property owners and those.

Follow the table below for maximum distances for wired communication between system components. Wire gauge must meet local codes.

For optimum efficiency, the more distance between solar panels and power lines is crucial. Substations are predominantly located near transmission line towers, which can be found on the outskirts of towns or near power generation sites, manufacturing facilities, or drilling and mining operations.

For obvious reasons of safety and grid maintenance, there must be a minimum distance between any building (or other structure) and the power system equipment at all times. Approach distances (clearances) depend on the type of line. The explanations below sum up the safe distances for work. • The.

Spacing between rods not less than 6'. Exception: Other rod diameters and configurations may be used to reduce ground resistance if supported by a qualified engineering study. Driven depth must be 8' or more and the top end must be flush with or below grade or suitably protected. Exception: If rock.

The distance limitations of solar panels are crucial factors in their efficiency and performance. To maximize their energy production, solar panels need to be installed in locations with optimal sunlight exposure. The separation of solar panels through the homestead markedly proceeds to energy.



Distance between power lines and solar-powered communication cabinets



[What Are the Required Minimum Distances From ...](#)

Maintaining a safe distance from power lines is governed by a system of codes and legal standards. Learn the principles behind these ...

[What is a Safe Distance to Live from Power Lines? Updated 2024](#)

Are you aware of the potential risks associated with living or working near power lines? With the increasing number of power lines in urban areas, it has become crucial to ...



[What Distance is Safe?](#)

The strongest magnetic fields are usually emitted from high voltage transmission lines -- the power lines on the big, tall metal towers. To be ...

[Safe distance between buildings and power lines](#)

Adding a new building or modifying an existing one? Make sure to respect the clearance required from power lines. Here are the safe distances for each case.



[What is the Minimum Ground Clearance for Overhead Power Line?](#)

The distance between the ground and the loaded conductor (overhead power line) is known as conductor-to-ground clearance or simply ground clearance. The minimum distances specified ...

[OSHA Power Line Clearance: Safe Distances ...](#)

Operating in close proximity to power lines presents a significant risk, especially for those utilizing specialized equipment such ...



[Power Line Communication in Solar Applications](#)

Figure 1 shows typical power line communication options implemented in different solar installations. These installations can be divided into communication on DC lines (red) and ...

[Electric power transmission](#)



The entire 6809 MW [1] nameplate generation capacity of the dam is accommodated by these six circuits. Electric power transmission is the ...



[Plan Distance Between Components](#)

Follow the table below for maximum distances for wired communication between system components. Wire gauge must meet local codes.

[What Are the Required Minimum Distances From Power Lines?](#)

Maintaining a safe distance from power lines is governed by a system of codes and legal standards. Learn the principles behind these essential clearances.



[What Distance is Safe? - EMF Center](#)

It's even more difficult to predict a safe distance from neighborhood power distribution lines -- the type typically found on wooden poles. For ...

[How Far Apart Should Data and Power Cables ...](#)



Learn the recommended distance between data and power cables to avoid interference and maintain optimal performance. Expert tips from ...



[Safe distance between buildings and power lines](#)

Adding a new building or modifying an existing one? Make sure to respect the clearance required from power lines. Here are the safe distances for each case.

48V 100Ah



[ANSI/TIA/EIA-569-A STANDARD](#)

The original version of this standard contains a special table titled "Separation of Telecommunications Pathways from



[Distance Limitations for Solar Panels: A Comprehensive Analysis](#)

Comprehensive analysis of solar panel distance limits: Learn wiring impacts, efficiency tips, and installation strategies for optimal energy output.



[Communication cable and power cable ...](#)



The greater the distance between data and AC power cables, the less the coupling. Obviously, direct current (DC) power cables can be ...



[What Is the Minimum Building Distance From Power Lines?](#)

The required distance for building near power lines varies based on technical and legal factors. Get a clear overview of how these rules are set and applied.



[Distance Limitations for Solar Panels: A ...](#)

Comprehensive analysis of solar panel distance limits: Learn wiring impacts, efficiency tips, and installation strategies for optimal energy output.



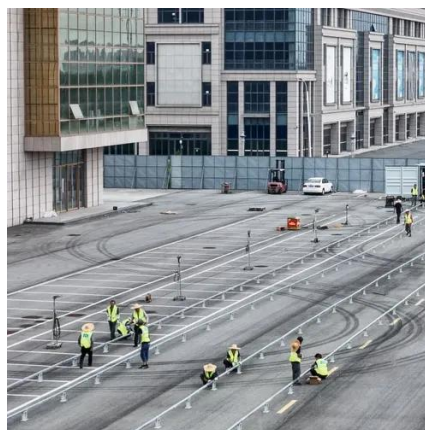
[Living and Working Around HIGH-VOLTAGE POWER LINES ...](#)

cross an air gap. For example, during operation of 500,000-volt line, arcing. can occur across a distance of seven feet or more. This distance varies with line operating voltage. Unlike wiring ...

[Power/Control Wiring Separation , Information by Electrical](#)



I'm wondering what most specifications call for regarding separation/spacing between power and DC instrumentation cabling in an industrial environment (for ...



Building near powerlines

One of the most common hazards identified by Ministry of Labour Inspectors is working too close to power lines. The best way to eliminate this risk is to establish and maintain safety ...



How It Works: Electric Transmission & Distribution and ...

The electricity supply chain consists of three primary segments: generation, where electricity is produced; transmission, which moves power over long distances via high-voltage power lines; ...



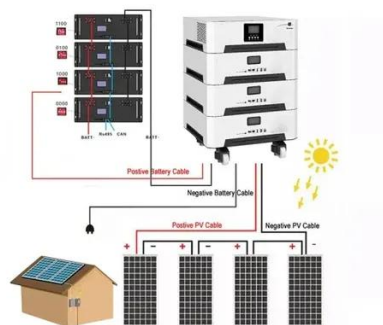
Microsoft PowerPoint

Spacing between rods not less than 6'. Exception: Other rod diameters and configurations may be used to reduce ground resistance if supported by a qualified engineering study. Driven depth ...

Microsoft PowerPoint



40 Inches Plus or Minus (Between Power and Communications) Part 3 - Underground Lines 30 inches (Power 12.47/7.2 kV burial depth) Sufficient Distance (Communications burial depth) 12 ...



[How Close To Ac Power Lines Solar Farm Distance?](#)

It is generally recommended to live at least 500 meters (0.3 miles) away from large-scale solar farms to minimize potential noise and glare issues. A distribution line must be ...

[What Distance is Safe?](#)

The strongest magnetic fields are usually emitted from high voltage transmission lines -- the power lines on the big, tall metal towers. To be sure that you are reducing the exposure levels ...



[Cable Separation Guide: Telecom & Power Cables ...](#)

Technical guide for safe separation of telecommunication and power cables. Covers aerial, buried, and building installations. Includes OSHA, NESC, ...



Contact Us

For inquiries, pricing, or partnerships:

<https://www.zawojcsolina.pl>

Phone: +48 22 173 6647

Email: info@zawojcsolina.pl

Scan QR code for WhatsApp.

