



Distributed energy server rack 120kW



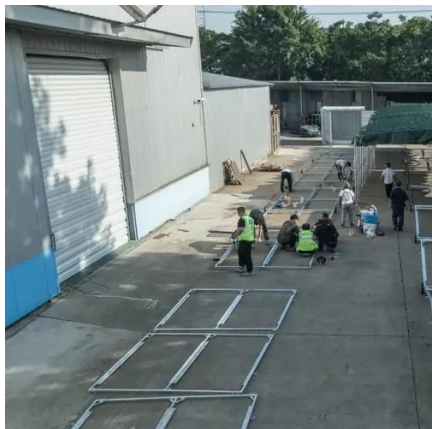


Distributed energy server rack 120kW



[Rack Power Solutions , Server Technology](#)

Server Technology's Intelligent rack power distribution units (PDUs) provide a tightly-integrated power solution for rack-level data center power distribution, data center power monitoring, and ...



News Center

This results in data center expansion and the higher power consumption of servers, elevating overall electricity costs. To reduce the unnecessary energy waste of ...

[One rack, 120kW of compute. Taking a closer look at Nvidia's DGX GB200](#)

GTC Nvidia revealed its most powerful DGX server to date on Monday. The 120kW rack scale system uses ...



[Nvidia reveals liquid cooled GB200 NVL72 system with 72 ...](#)

Nvidia has announced a liquid cooled server rack featuring 72 of its newly shared Blackwell GPUs. The GB200 NVL72 system also includes 36 Grace CPUs and nine NVLink ...



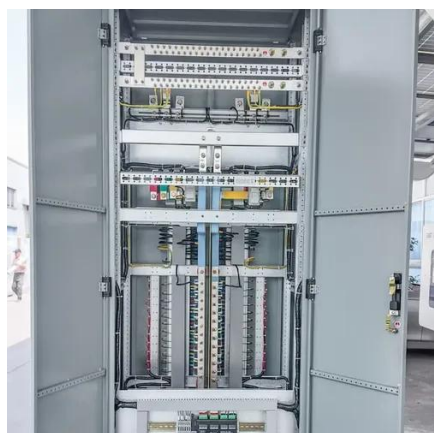
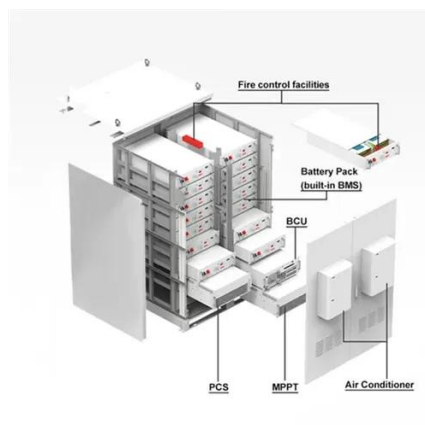
[APC USA , Schneider Electric United States](#)

APC, a flagship brand of Schneider Electric, provides clean battery back-up power, surge protection, and IT physical infrastructure inside and outside ...



[Data Center Rack Power Costs: A Condensed ...](#)

Data center power density, measured in kilowatts (kW) per server rack, is crucial for optimizing design and operations. Higher density ...



[Future-Proofing Data Centers: Preparing for 2MW+ AI Racks and ...](#)

GB200 NVL72 at 120kW/rack now shipping--the 2.4MW figure was aspirational for future configurations. Vera Rubin NVL144 targeting 600kW per rack by 2026. Liquid cooling (direct-to ...

[Best Practices for Data Center Area Sizing Per Rack Based on ...](#)



? Final Thoughts As rack power densities continue to rise--especially with the proliferation of AI and machine learning--it's crucial to adopt a data-driven, scalable approach to data center ...



[Colocation Provider Selection for AI: DGX-Ready Facilities and ...](#)

Wrong colocation choice led to \$8M in stranded GPUs. Only 47 facilities globally meet NVIDIA DGX-Ready standards for 120kW racks. Selection guide.

[How Meta achieves 120kW a rack in 20kW air-cooled data centers](#)

For two 120kW racks of compute - each rack featuring 18 compute trays (72 Grace CPUs and 144 Blackwell GPUs) and nine NV switches, Meta utilizes four racks of ...



News Center

To satisfy customer needs, Delta launched the 120 kW power shelf, which consists of twenty-four 5 kW power supplies and boasts an impressive 97.5% power conversion ...

[InfraSuite Modular Server Rack System](#)



Thanks to unsurpassed reliability, efficient use of energy, cost-effectiveness, potential for expansion, and sheer power, the modular rack system offers stable data storage along with ...

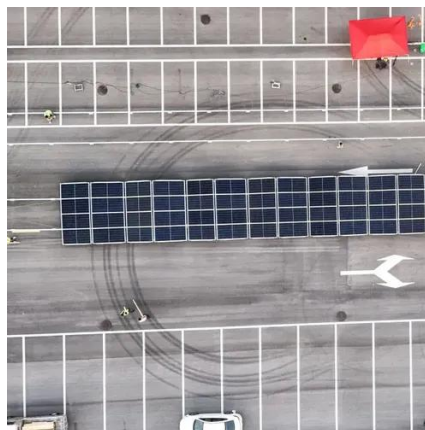


SMART SOLUTIONS REFERENCE SUMMARY

PUE is a measure of how efficiently a computer data center uses its power; specifically, how much of the power is actually used by the computing equipment (in contrast to cooling and other ...

How much power do your racks typically support? :...

Doing some deployment planning and wondering how much power can your typical racks support? Thanks!



Rising Rack Densities: A Driver for High-Density Rack Power

Rising Rack Densities: A Driver for High-Density Rack Power Distribution Units The average power density of data center racks continues to rise to support AI and ML, crossing 10kW in ...

Data Center Rack Power Costs: A Condensed Analysis . Nlyte



While a standard rack uses 7-10 kW, an AI-capable rack can demand 30 kW to over 100 kW, with an average of 60 kW+ in dedicated AI facilities. This article provides a ...



[kW per Rack Explained: Optimize Colocation Power & Costs](#)

Learn how kW per rack impacts colocation pricing, energy efficiency, and performance. Discover best practices to manage power, reduce costs, and future-proof your IT ...



[GB200 NVL72 Deployment: Managing 72 GPUs in Liquid-Cooled](#)

The GB200 NVL72 consumes 120 kilowatts and delivers 1.4 exaflops of AI compute in a single rack.¹ The architecture obliterates traditional boundaries between nodes, creating a coherent ...



[Liquid Cooling Server Rack-AmpLink Tech Corp.](#)

Liquid Cooling Server Rack Equipped with intelligent PDUs, manifolds and rack-mounted CDU, a liquid cooling server rack can support rack power ...

[Liquid Cooling Server Rack-AmpLink Tech Corp.](#)



Liquid Cooling Server Rack Equipped with intelligent PDUs, manifolds and rack-mounted CDU, a liquid cooling server rack can support rack power density up to 120kW.



[Server Rack Power Consumption Calculator](#)

Building out a new data center is a daunting task. To help you out, we've created a handy server rack power consumption calculator tool.



[In-Rack Direct DC Powering of Servers with Solid Oxide and ...](#)

Hybrid fuel cell systems designed, installed and tested Use of a 10kW PEMFC stack and system as the distributed power source to power a server rack Use of a 2.5 kW SOFC stack and ...



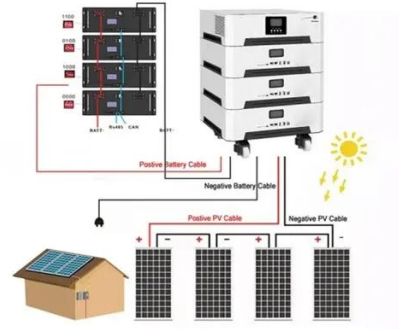
[Server Technology Rack Power Distribution Units, Legrand](#)

Get the rack PDU needed for your lab, data center or telecommunications operation. Enjoy reduced downtime, improved energy utilization and more.

[Data Center Power Consumption Per Rack](#)



The server rack energy consumption issue is topical since it has many units requiring sufficient feeding. A server cabinet is a storage ...



[Microsoft and Meta reveal open AI rack design with ...](#)

Microsoft and Meta have been working on a new open rack design for AI data centers which separates power and compute into ...



Contact Us

For inquiries, pricing, or partnerships:

<https://www.zawojcsolina.pl>

Phone: +48 22 173 6647

Email: info@zawojcsolina.pl

Scan QR code for WhatsApp.

