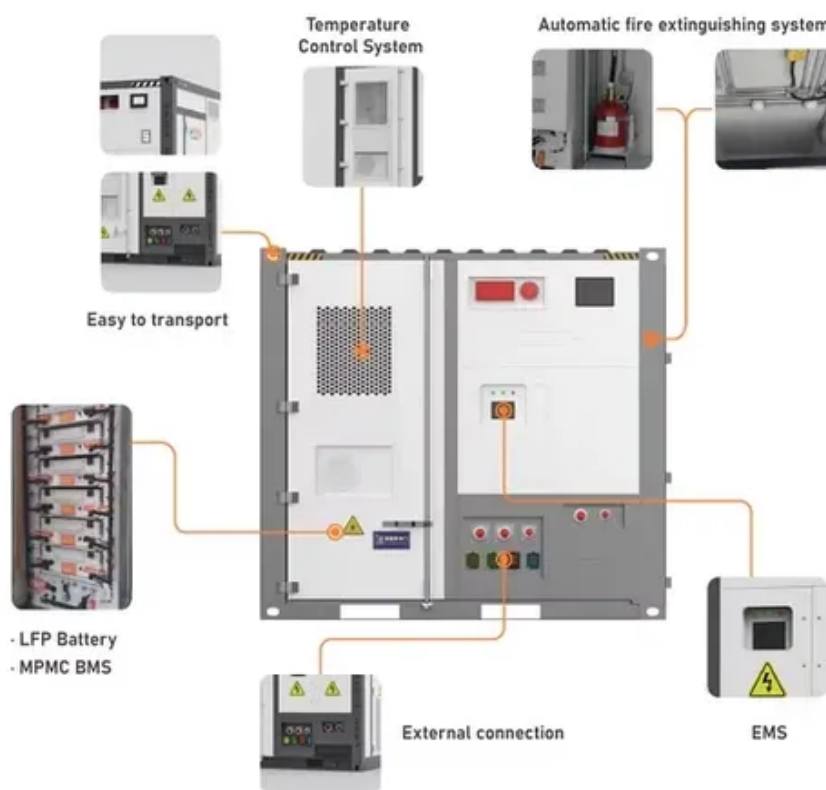




For users working in the field the external cabinet should be 1000mm deep





Overview

Mid depth racks (about 1000mm) are a good compromise. They can hold medium sized servers, PDUs, and decent airflow management. If your setup is made up of a number of components but space is really limited, these may be ideal for you.

Mid depth racks (about 1000mm) are a good compromise. They can hold medium sized servers, PDUs, and decent airflow management. If your setup is made up of a number of components but space is really limited, these may be ideal for you.

Depth of server cabinets and server racks has become more and more important, as server manufacturers are making their servers shorter in height (typically rackmount servers each take up only 1u or 2u of space), but are making them a lot deeper. Our range of server cabinets are supplied in 900mm or.

Server cabinets are commonly found in a few standard depth measures, including 600mm (23.6"), 800mm (31.5"), 1000mm (39.4"), and 1200mm (47.2"). Standard server rack dimensions for depth would typically range between 800mm to 1200mm for full sized enterprise solutions. Smaller setups such as.

There are three dimensions to consider when selecting server cabinets: cabinet depth, height, and width. The first is to determine the depth of cabinet required. From our server cabinet ranges this will determine the cabinets available. The reason for this is that each cabinet has a maximum.

The trend towards denser rack-mount servers has affected network enclosure design, resulting in a need for deeper cabinets. For instance, standard cabinets are at least 36 inches (900 mm) deep or even deeper. One particular server is 40 inches (1,000 mm) deep and requires a 48-inch- (1,200 mm) deep.

The depth of working space, which you measure from the enclosure front (not the live parts), cannot be less than the distances in Table 110.26 (A) (1). These distances are determined by voltage-to-ground and three different conditions: Condition 1. Exposed live parts on one side of the working.

An electrical enclosure is a purpose-built cabinet designed to house electrical and electronic devices, providing the required protection to keep operators/personnel safe from electrical shock hazards and devices protected from hazardous



environments as well as accidental damage. Today's enclosures.



For users working in the field the external cabinet should be 1000mm

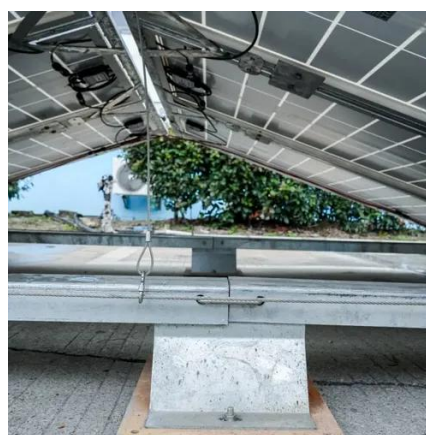


[Server Cabinet Buyers Guide , FAQs , Server Room Environments](#)

Looking to buy a server cabinet? Read our server cabinets buyers guide and see the most commonly asked questions when it comes to selecting, specifying and buying server racks ...

[Working safely in your biological safety cabinet](#)

Laminar Flow Cabinets do not provide user protection. Make sure to use a Biological Safety Cabinet when dealing with biohazards. If ...



[UV Light in Biosafety Cabinets: Pros and Cons](#)

As we explore this topic, we'll examine the science behind UV light disinfection, its practical applications in biosafety cabinets, and the ...

[Practical Guide to Electrical Enclosures for Industrial ...](#)

An electrical enclosure is a purpose-built cabinet designed to house electrical and electronic devices, providing the required protection to keep operators/personnel safe from electrical ...



[Buying Guide - Server Rack Cabinets](#)

Our range of server cabinets are supplied in 900mm or 1000mm external depths. As a rule, the maximum internal working space ...



[Buying Guide - Server Rack Cabinets](#)

Our range of server cabinets are supplied in 900mm or 1000mm external depths. As a rule, the maximum internal working space is less than this, typically between 100-150mm ...



[Working safely in your biological safety cabinet](#)

Laminar Flow Cabinets do not provide user protection. Make sure to use a Biological Safety Cabinet when dealing with biohazards. If handling small amounts of ...



[Size Matters - Especially When Choosing A ...](#)



An IT Manager just purchased several new servers that are all 32-inches deep. He is now shopping for a new 42U server cabinet in which to mount ...



[Class II Biological Safety Cabinet: Things to Consider when Purchasing](#)

Class II B1 Biological Safety Cabinets are less common but often selected in situations where a user requires 100% exhaust but does not have the building exhaust ...

[IP66 Field Type Cabinet](#)

2 different depth options, 600x450mm and 600x600mm. Full protection against dust and water ingress with IP66. 1 mm galvanized steel sheet for ...



[Buy Prism PI 12u 600 x 1000 Server Rack Cabinet, Comms ...](#)

Prism's 12U 600 x 1000mm PI Server Rack is manufactured from 2mm steel, allowing it to accommodate all of today's data centre requirements and this additional grade of material ...



[Working Clearances, based on the 2020 NEC](#)



When working in a passageway and live parts are exposed for inspection or servicing, the working space should be guarded from use by occupants. When working on electrical equipment in a ...



[45RU 1000mm Deep X 800mm Wide Rack Cabinet PDF](#)

This should serve you for a long time, until you're ready to upgrade to a higher capacity cabinet like the 45RU 1000mm Deep X 800mm Wide Rack Cabinet. The Beginning of a Long-Term ...



[Buyers guide to server and data cabinets](#)

These are always 1000mm deep so that they can accommodate the extra depth that many Servers, NAS, and SAN have. It also means there will be better ventilation as these ...



[Network cabinet design considerations , Oil & Gas Journal](#)

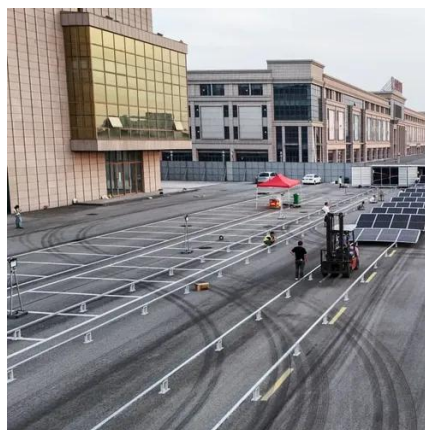
One particular server is 40 inches (1,000 mm) deep and requires a 48-inch- (1,200 mm) deep cabinet, so the growth in depth is forcing a change in cabinet design. Height, on the other ...



[12U Racks , 12U Server Cabinets , Server Room Environments](#)



12U Racks and Server Cabinets The 12U racks and data cabinets range from Server Room Environments covers standard rack mount IT applications for use in office, retail and ...



[800mm Wide x 1000mm Deep Server Cabinets/Racks , Comms ...](#)

Explore the range of 800mm Wide x 1000mm Deep Server Cabinets/Racks available at Comms Express, Networking Reseller - Free Delivery Available To Buy Online Today.



[Server Cabinet Buyers Guide , FAQs , Server Room Environments](#)

As a rule of thumb, the maximum internal depth of a server cabinet is approximately 130mm less than the overall outer depth of the cabinet. The best way to determine the depth required is to ...



[Working Clearances, based on the 2020 NEC](#)

When working in a passageway and live parts are exposed for inspection or servicing, the working space should be guarded from use by occupants. ...

[What rack cabinet depth for rack servers with rails? , TrueNAS ...](#)



Hi! I'm looking to replace an old cheapy full-height rack cabinet with a new one. What sizes should I go for? The old one is 600x800 and it is not deep enough to fit HPE server ...



[Xtreme 27U IP54 Server Racks 600mm Wide ...](#)

A 27U IP54 server rack for applications requiring an 600mm wide by 1000mm deep cabinet with an internal depth of 870mm with ...

[27U Server Cabinets/Racks , Comms Express](#)

Explore the range of 27U Server Cabinets/Racks available at Comms Express, Networking Reseller - Free Delivery Available To Buy Online Today.

Support Customized Product



Field Cabinets

Field Cabinets house sensitive electrical equipment outdoors including for traffic management and intelligent transport systems.

[Which server rack should I choose?](#)



The 600 mm deep wall mount racks are available in two different variants: wall mount racks with an installation depth of 600 mm and tiltable wall mount racks. Tilting wall ...



[How Deep Should My Server Rack Cabinet Be? A Complete Guide](#)

Server cabinet sizes are not uniform, and the improper depth can cause overheating, poor cable management, or even needing to purchase new equipment in general. ...

[NavePoint 42U Server Cabinet 1000mm Deep with Locking ...](#)

How does the rack's design promote equipment compatibility? With adjustable depth and full-height cable management, the 42U NavePoint Commercial Series cabinet ...



[Serveredge 45RU 800mm Wide & 1000mm Deep Fully ...](#)

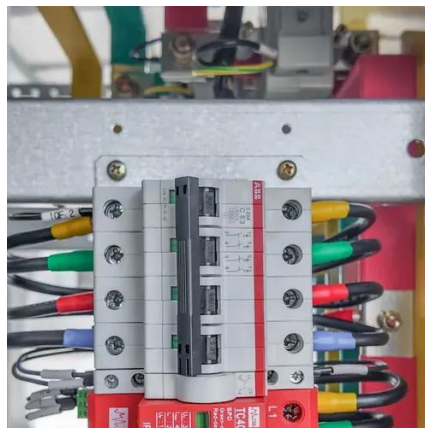
Serveredge Free Standing Fully Assembled rack Cabinets are a perfect solution for securely storing your high-density server & standard rack mount equipments in a data centres and ...



[How Deep Should My Server Rack Cabinet Be? A ...](#)



Server cabinet sizes are not uniform, and the improper depth can cause overheating, poor cable management, or even needing to ...



[Safe Clearances for Electrical Equipment: Working Space and ...](#)

Dedicated electrical rooms should never be used for storage, and a clear path of travel should be maintained for emergency egress. Oftentimes, these rooms become a catchall for everything ...

[800mm Wide x 1000mm Deep Server ...](#)

Explore the range of 800mm Wide x 1000mm Deep Server Cabinets/Racks available at Comms Express, Networking Reseller - Free Delivery ...



[Buy Prism PI 12u 600 x 1000 Server Rack Cabinet ...](#)

Prism Server Cabinet Product Information Prism's 12U 600 x 1000mm PI Server Rack is manufactured from 2mm steel, allowing it to accommodate ...

[Network cabinet design considerations , Oil & Gas ...](#)



One particular server is 40 inches (1,000 mm) deep and requires a 48-inch- (1,200 mm) deep cabinet, so the growth in depth is forcing a change in ...





Contact Us

For inquiries, pricing, or partnerships:

<https://www.zawojcsolina.pl>

Phone: +48 22 173 6647

Email: info@zawojcsolina.pl

Scan QR code for WhatsApp.

