



How big is the wind power system





Overview

Wind is air movement in the Earth's . In a unit of time, say 1 second, the volume of air that had passed an area is . If the air density is , the flow rate of this volume of air is , and the power transfer, or energy transfer per second is . Wind power is thus proportional to the third power of the wind speed; the available power increases eightfold when the wind speed doubles. Change of.



How big is the wind power system



[Wind Power Facts and Information , ACP , ACP](#)

Wind is America's largest source of renewable energy. Benefits of Wind Power Utility-scale wind energy is the largest source of renewable electricity generation in the United States, providing ...

[Global wind power market](#)

In 2024, the total wind power capacity installed worldwide surpassed 1.1 terawatts, growing by more than 100 gigawatts in ...



[How Big of a Wind Turbine Do You Need to Power a House? A ...](#)

Conclusion: Finding the Right Wind Turbine for Your Home In conclusion, determining how big of a wind turbine you need to power a house depends on various factors, ...

[Home Wind Turbine Overview 2025 Guide to Small](#)

...

Thinking about a small wind turbine? Our 2025 guide covers the cost, requirements, and how they compare to solar panels + battery ...



[The best home wind turbines, according to experts](#)

Blow some of your electric bills away when you harness your backyard breeze and generate green energy from the best home wind ...

[Global wind power market](#)

In 2024, the total wind power capacity installed worldwide surpassed 1.1 terawatts, growing by more than 100 gigawatts in comparison to the previous year. China is the leading ...



[How big of a wind turbine do you need to power a ...](#)

The size of a wind turbine required to power a house depends on several factors, including the household's energy consumption, the ...



[Wind Energy Factsheet](#)



Wind could provide 20% of U.S. electricity by 2030 and 35% by 2050. 11 Five of the eight Great Lakes states have offshore wind energy potentials that ...



[Home Wind Turbine System: The Future of Energy](#)

...

Home wind turbine systems are changing the game for energy independence. You can harness wind power right from your own ...

[How big of a wind turbine do you need to power a house?](#)

To calculate the wind turbine size for your home, you should consider the wind speed in your area and how much energy you want to produce. As wind speed increases, ...



[Wind Energy , Department of Energy](#)

Wind power is the nation's largest source of renewable energy, with more than 150 gigawatts of wind energy installed across 42 U.S. States and Puerto Rico. These projects ...



[Wind Power Calculator: Energy vs Turbine Size vs Speed](#)



Wind power system calculation. Find out how much energy your turbine will generate for your home at a given size, wind power density and speed.



[Understand Wind Energy , Understand Energy ...](#)

Today, the average turbine is well over 300 feet tall or about the length of a football field. Wind speeds are stronger and steadier ...



Wind Energy

Wind energy also needs wide stretches of open space. The average wind turbine in the U.S. is over 330 feet tall, and its blades span a circle over 400 feet wide--longer than a ...



[Wind power generation, 2024](#)

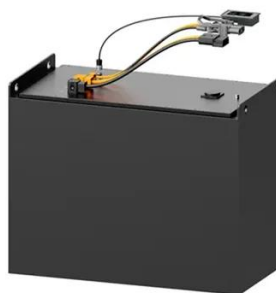
Annual electricity generation from wind is measured in terawatt-hours (TWh) per year. This includes both onshore and offshore wind sources.



[Wind power , Description, Renewable Energy, Uses, ...](#)



As of 2018 the largest wind farm in the world was the Jiuquan Wind Power Base, an array of more than 7,000 wind turbines in China's Gansu province that produces more than ...



[Wind energy facts, advantages, and disadvantages ...](#)

The cost of wind energy has plummeted over the past decade. In the U.S., it is cost-competitive with natural gas and solar power. Wind energy and ...



Wind power

Wind power is thus proportional to the third power of the wind speed; the available power increases eightfold when the wind speed doubles. Change of wind speed by a factor of 2.1544 ...



Global Statistics

The world's installed wind power capacity now meets well over 10% of global electricity demand - and much more than nuclear power. More than 30 countries now have a ...

[Understand Wind Energy , Understand Energy Learning Hub](#)



Today, the average turbine is well over 300 feet tall or about the length of a football field. Wind speeds are stronger and steadier higher up, so taller turbines can generate ...





Contact Us

For inquiries, pricing, or partnerships:

<https://www.zawojcsolina.pl>

Phone: +48 22 173 6647

Email: info@zawojcsolina.pl

Scan QR code for WhatsApp.

