



How long does outdoor lighting last for one kilowatt-hour of electricity





Overview

Running it for about 5 hours every night adds up to 50 watt-hours per day. Over a 30-day month, that's about 1.5 kilowatt-hours (kWh). The average electricity rate of \$0.15 per kWh is only around 22 cents a month—barely noticeable on your energy bill.

Running it for about 5 hours every night adds up to 50 watt-hours per day. Over a 30-day month, that's about 1.5 kilowatt-hours (kWh). The average electricity rate of \$0.15 per kWh is only around 22 cents a month—barely noticeable on your energy bill.

Here's what that means for your wallet: if electricity costs are average, using the halogen lights for 5 hours every night will add up to 2.5 kWh daily. An LED system for the same time uses just 0.625 kWh. That's a huge monthly and yearly difference on your electric bill—not to mention the positive.

The energy used by outdoor lights depends on a few things, like the type of lights, how many strands you use, and how long they're on each day. Each type uses a different amount of energy. The type of lights you choose can make a big difference in how much electricity your decorations use. There.

Consider an outdoor lighting setup that includes five fixtures, each using a 60-watt incandescent bulb. If these lights were to operate for an average of five hours a day, you'd be consuming a total of 300 watts of electricity daily (5 lights x 60 watts each). Now, let's switch to LED lights with.

LED outdoor lights are highly energy-efficient, using far less electricity than traditional incandescent or halogen bulbs—usually just 3 to 10 watts. You can keep them on for several hours without seeing a major increase in your electricity bill. LEDs are designed to be energy-efficient.

However, the lifespan of an outdoor LED system is not a single fixed number; it is a complex outcome dependent on a rated lifespan and a range of environmental and operational stresses. Understanding the technical metrics and external hazards that affect these lights will help maximize the return.

LED lights last 25 times as long as incandescent bulbs. But, how will that translate



to your home's particular usage?

The best way to know how long lights will last is to look at the hour rating. For example, if the LED rope lights or bulbs you're considering have a rating of 50,000 hours, that. How long do outdoor lights last?

These energy saving lights are solar powered and are equipped with LED bulbs that last up to 6 hours when fully charged; they also conveniently come with 2 rechargeable AAA batteries. Built to be weather resistant, these outdoor lights can withstand rain, snow, frost or sleet, for year-round enjoyment!.

How long do energy efficient light bulbs last?

Energy efficient lights can last for over 20 years from the time of installation. This is significantly longer than regular bulbs. They are designed to last and do not have a reputation for 'burning out' at any time. 3. Energy efficient lights also emit less heat.

How long do LED lights last?

LEDs achieve this efficiency by converting electricity directly into light through semiconductor technology, with minimal energy lost as heat. They also last 15-25 times longer than incandescent bulbs, typically operating for 25,000-50,000 hours. Traditional incandescent bulbs remain common in many homes despite their inefficiency.

How much energy does a light bulb use?

LED (Light Emitting Diode) bulbs are the most energy-efficient lighting option available today. They typically consume 2-18 watts depending on their brightness output: LEDs achieve this efficiency by converting electricity directly into light through semiconductor technology, with minimal energy lost as heat.



How long does outdoor lighting last for one kilowatt-hour of electricity



[What is a kWh and how much does electricity cost ...](#)

A kilowatt hour is a unit of measurement. 1 kilowatt hour is the amount of energy you'd use if you kept a 1,000 watt appliance running for ...

[How Long Do Outdoor Light Fixtures Last? A Guide . HomeyFad](#)

LED lighting, unlike other lighting types, has a much longer lifespan. LEDs are energy efficient and reduce the strain on the bulb. LED lamps don't generate much heat, are ...

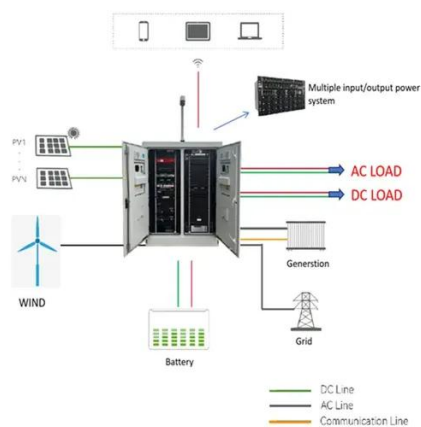


[Power Consumption Calculator: How much Costs?](#)

For this purpose, you can assume an average value for the calculation. How much are the electricity costs? Optionally, the result can ...

[How Much Electricity Do Lights Use? Complete 2025 Guide](#)

Lighting accounts for 6% of home electricity usage
- For an average home using 10,500 kWh annually, lighting consumes about 630 kWh per year, making efficiency ...



[Do LED Outdoor Lights Use A Lot Of Electricity?](#)

LED outdoor lights are highly energy-efficient, using far less electricity than traditional incandescent or halogen bulbs--usually just 3 to 10 watts. You can keep them on ...



[Do LED Outdoor Lights Use A Lot Of Electricity?](#)

LED outdoor lights are highly energy-efficient, using far less electricity than traditional incandescent or halogen bulbs--usually just 3 ...



[Cost Per Light Calculator](#)

Cost Per Light = (Power Consumption in kW × Hours Used × Electricity Rate per kWh) where: Power Consumption in kW is the ...

[What Is A Kilowatt-Hour \(kWh\)?](#)



A kilowatt-hour is a unit of energy used to measure energy consumption or generation. Electricity providers use kWh to determine how much electricity you consume. If ...



[Do Outdoor Home LED Lights Use a Lot of Electricity?](#)

The energy used by outdoor lights depends on a few things, like the type of lights, how many strands you use, and how long they're on each day. Each type uses a different ...



[Do outdoor lights use a lot of electricity?](#)

Use our electricity cost calculator and find out how much it costs to run outdoor lights (and other electrical appliances) for a day or a ...



[How Long Do Outdoor LED Lights Last, and How ...](#)

LED lights last 25 times as long as incandescent bulbs. But, how will that translate to your home's particular usage? The best way to ...



Rate Information



Many factors play a role in determining the price you pay for energy. Learn more about how your rate is calculated.



[What is a Kilowatt-Hour \(kWh\)? , Residential ...](#)

What is a Kilowatt-Hour? Residential electricity usage is measured in kilowatt-hours (kWh). One kilowatt-hour (1 kWh) is equal to the amount of ...

[How Much Electricity Does Landscape Lighting Use?](#)

Electricity usage is measured in kilowatt-hours (kWh). In 2025, the national average cost per kWh was 16.08 cents. If you're running your landscape lighting from dusk until midnight in the state ...



[Cost Per KWH Calculator](#)

The Cost Per kWh Calculator helps users determine how much they pay for each kilowatt-hour (kWh) of electricity they consume.

[How Long Do Outdoor LED Lights Last, and How Can You ...](#)

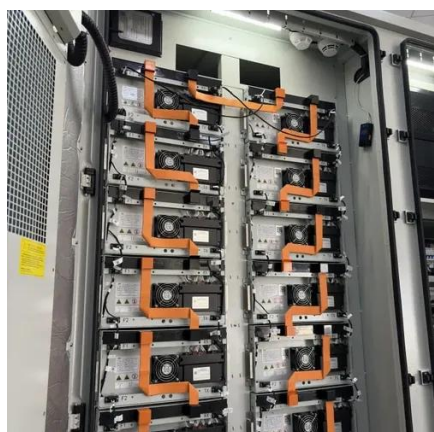


LED lights last 25 times as long as incandescent bulbs. But, how will that translate to your home's particular usage? The best way to know how long lights will last is to look at the ...



[Revised-How Much Electricity Do LED Landscape Lights Use](#)

If your outdoor lighting system uses 500 watts with halogen bulbs, switching to LED can reduce this to around 125 watts. With an electricity rate of \$0.12 per kilowatt-hour, ...



[Electricity Cost Calculator](#)

The electricity cost calculator is designed to help consumers estimate and monitor their electrical energy consumption costs. Let's say you want to ...



[Revised-How Much Electricity Do LED Landscape ...](#)

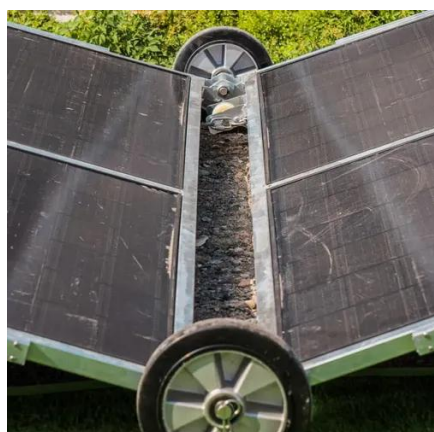
If your outdoor lighting system uses 500 watts with halogen bulbs, switching to LED can reduce this to around 125 watts. With an ...



[How Long Will Outdoor LED Lights Last](#)



The answer is impressive. A typical LED light made for residential use can last up to 50,000 hours. To put that into perspective, that's more than 20 years of average evening ...



[How Much Power Do Outdoor Lights Use?](#)

We'll clear up any confusion, chat about energy-smart fixes, and spill the beans on what outdoor lighting really does to your energy bill. Let's shed some light on this topic!

[How Long Do Outdoor Light Fixtures Last? A ...](#)

LED lighting, unlike other lighting types, has a much longer lifespan. LEDs are energy efficient and reduce the strain on the bulb. LED ...



[Does landscape lighting use much electricity?](#)

The average cost of electricity in New York as of January 2025 is 25.31 cents/kWh (kWh stands for kilowatt-hour, which is a unit of ...

[How Much Electricity Does Landscape Lighting Use?](#)



Electricity usage is measured in kilowatt-hours (kWh). In 2025, the national average cost per kWh was 16.08 cents. If you're running your landscape ...



[Electricity Calculator](#)

Estimate your home's electric use with a kWh calculator. Input home details for a customized estimate. Find the best electricity plans and rates for ...

[What Is a Kilowatt Hour? kW vs. kWh Explained](#)

A kilowatt-hour (kWh) is a unit of energy that measures how much electricity you use over a given amount of time. Quantified, it represents the consumption of 1,000 watts of ...

12.8V6Ah

- Nominal voltage (V):12.8
- Nominal capacity (Ah):6
- Rated energy (WH):76.8
- Maximum charging voltage (V):14.6
- Maximum charging current (A):6
- Floating charge voltage (V):13.6-13.8
- Maximum continuous discharge current (A):10
- Maximum peak discharge current @10 seconds (A):20
- Maximum load power (W):100
- Discharge cut-off voltage (V):10.8
- Charging temperature (°C):-50
- Discharge temperature (°C):-20-+60
- Working humidity: $\leq 95\%$ RH (non condensing)
- Number of cycles (25 °C, 0.5C, 100%DoD): >2000
- Cell combination mode: 32700-4s1p
- Terminal specification: T2 (6.3mm)
- Protection grade: IP65
- Overall dimension (mm):50*70*107mm
- Reference weight (kg):0.7
- Certification: un38.3/msds



[How Long Do Outdoor LED Lights Last?](#)

For high-quality outdoor LED fixtures, this L70 rating typically falls within a range of 25,000 to over 50,000 hours of operation. To put this into perspective, a 40,000-hour rated ...

[Do Outdoor Home LED Lights Use a Lot of ...](#)



The energy used by outdoor lights depends on a few things, like the type of lights, how many strands you use, and how long they're on ...

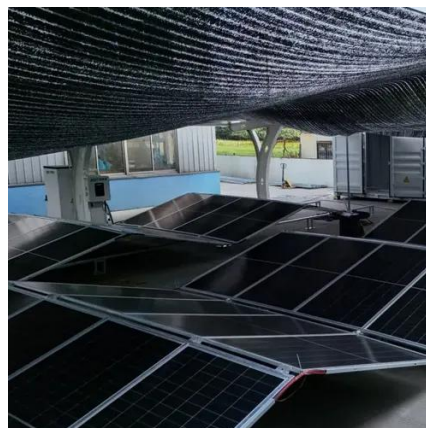


[How Much Power Do Outdoor Lights Use?](#)

We'll clear up any confusion, chat about energy-smart fixes, and spill the beans on what outdoor lighting really does to your energy bill. Let's shed ...

[What Is A Kilowatt-Hour? How Electricity Usage is Measured](#)

A kilowatt-hour (kWh) measures energy usage and is equivalent to consuming 1,000 watts of power for one hour. For example, running a 100-watt light bulb for 10 hours uses ...



[What Is A KWh In Electricity? Complete Guide To Kilowatt-Hours ...](#)

Learn what a kWh means, how to calculate electricity usage, and reduce your energy bills. Complete guide with examples, calculators, and expert tips.



Contact Us

For inquiries, pricing, or partnerships:

<https://www.zawojcsolina.pl>

Phone: +48 22 173 6647

Email: info@zawojcsolina.pl

Scan QR code for WhatsApp.

