



# How many hours does it take to charge the lithium iron phosphate battery pack





## Overview

---

How long does a lithium iron phosphate battery take to charge?

Lithium iron phosphate (LiFePO<sub>4</sub>) batteries take about 6-10 hours to finish charging. They are very safe and can handle lots of charge cycles. No matter the type, charging them frequently helps extend their lifespan compared to letting them run down.

How long does a lithium battery take to charge?

Stage 1 charging uses 0.3-1.0C of the battery's capacity. SLA batteries take about four hours, while lithium batteries can reach full charge in as little as one hour—up to four times faster—even at just 0.5C. Stage 2 completes the battery's charge to 100% SOC. SLA batteries take six hours, while lithium batteries take as little as 15 minutes.

How long does it take to charge a LiFePO<sub>4</sub> battery?

Lithium iron phosphate (LiFePO<sub>4</sub>) batteries may require the most time, about 6-10 hours, to finish charging. Lithium polymer (LiPo) batteries used in RC vehicles and drones typically take 3-5 hours to charge back up from empty.

How long does it take to charge a LiPo battery?

Lithium polymer (LiPo) batteries typically take 3-5 hours to charge back up from empty. Their thin, flexible shape works well for gadgets that need rechargeable batteries. Lithium iron phosphate (LiFePO<sub>4</sub>) batteries may require the most time, about 6-10 hours, to finish charging.



## How many hours does it take to charge the lithium iron phosphate ba



### [How to get the state of charge on a lithium or ...](#)

Because you get the same amount of amp hours from a LiFePO4 battery whether you draw one amp or its full C-rating going by ...

### [Charging a Lithium Iron Phosphate \(LiFePO4\) Battery Guide](#)

Typically, it takes several hours to fully charge an EV, but the exact time can vary. It is recommended to use high-power charging stations for faster charging.



### [Master First-Time Lithium Battery Charging: Tips & Tricks](#)

Lithium iron phosphate (LiFePO4) batteries may require the most time, about 6-10 hours, to finish charging. But they are very safe and can handle lots of charge cycles.



### [\[Full Guide\] How to Charge LiFePO4 Batteries](#)

Want your LiFePO4 lithium battery to last years longer? Discover the 3 proven ways to charge it safely and maximize its lifespan!



### [How to Charge a Lithium Battery? \[2025 Guide\], Renogy US](#)

Lithium Iron Phosphate (aka LiFePO4 or LFP batteries) are a type of lithium-ion battery, but are made of a different chemistry, using lithium ferro-phosphate as the cathode material.



### [How to Charge Lithium iron Phosphate \(LiFePO4\) ...](#)

Monitor the charge, stop when it's fully charged, and keep the battery cool. Simple, right? But stay tuned, I'll give you a detailed step-by ...



### [Charging Your Lithium Battery . RELiON](#)

How long will it take to charge a lithium battery? Lithium iron phosphate batteries can be charged in as fast as 1 hour. We recommend using a ...



### [Lithium iron phosphate battery](#)



The lithium iron phosphate battery (LiFePO<sub>4</sub> battery) or LFP battery (lithium ferrophosphate) is a type of lithium-ion battery using lithium iron phosphate (LiFePO<sub>4</sub>) as the catho



### [Battery University , BU-409b: Charging Lithium ...](#)

Lithium Iron Phosphate (LFP) has identical charge characteristics to Lithium-ion but with lower terminal voltages. In many ways, LFP also resembles ...

### [How to Properly Charge Lithium Iron Phosphate \(LiFePO<sub>4</sub>\) Batteries](#)

Standard Charging Rate: Recommended at 0.5C to 1C, where "1C" means charging at a rate that would fully charge the battery in one hour.  
Moderate Rates: For optimal ...



### [How to Charge a LiFePO<sub>4</sub> Battery](#)

For a slow and steady charge, use a charger that outputs about 10% of the battery's total amp-hours (Ah). For example, with a ...



### [Charging Your Lithium Battery , RELiON](#)



Although many existing lead-acid chargers will still charge our Lithium battery, it is generally discouraged to do this. The risk is the lead-acid ...



### [How Long Does a Lithium Battery Take to Charge](#)

Learn how long it takes to charge a lithium battery, factors determining charging time, and much more, including best charging ...



### [How to Charge a LiFePO4 Battery](#)

For a slow and steady charge, use a charger that outputs about 10% of the battery's total amp-hours (Ah). For example, with a 100Ah battery, a 10A charger would take ...



### [How to Charge Lithium iron Phosphate \(LiFePO4\) Battery?](#)

For lithium iron phosphate (LiFePO4) battery packs with multiple battery cells connected in series, balance charging ensures that all battery cells in the battery pack have ...



### [How to Properly Charge LiFePO4 Battery with a ...](#)



Lithium Iron Phosphate (LiFePO4) batteries are known for their long lifespan, reliability, and safety. People widely use them in solar ...

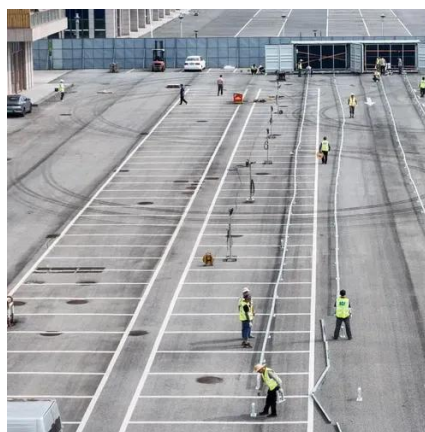


### [How to Charge Lithium iron Phosphate \(LiFePO4\) Battery?](#)

Monitor the charge, stop when it's fully charged, and keep the battery cool. Simple, right? But stay tuned, I'll give you a detailed step-by-step guide on charging lithium iron ...

### [How to Charge Lithium Iron Phosphate Batteries . Power Sonic](#)

SLA batteries take six hours, while lithium batteries take as little as 15 minutes. Overall, lithium charges in four hours versus SLA's 10, allowing multiple daily cycles compared to SLA's single ...



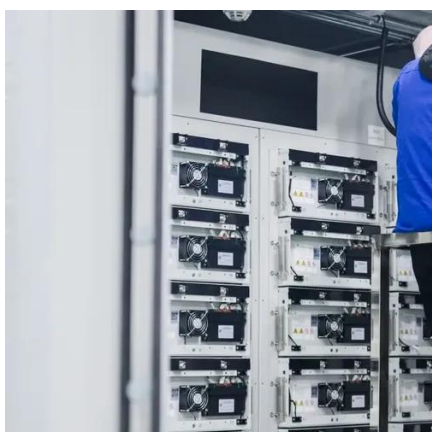
### [LiFePO4 Battery Runtime Calculator](#)

The LiFePO4 Battery Runtime Calculator is designed to help you predict the runtime of Lithium Iron Phosphate (LiFePO4) batteries. ...

### [HOW TO CHARGE LITHIUM IRON PHOSPHATE ...](#)



The SLA battery takes 7 hours to complete Stage 2, whereas the lithium battery can take as little as 15 minutes. Overall, the lithium battery charges in four hours, and the SLA battery typically ...



### [Charging Your Lithium Battery . RELiON](#)

How long will it take to charge a lithium battery? Lithium iron phosphate batteries can be charged in as fast as 1 hour. We recommend using a rate that charges our batteries in 2-5 hours. ...

### [Complete Guide to LiFePO4 Battery Charging & Discharging](#)

This article details how to charge and discharge LiFePO4 batteries, and LFP battery charging current. This will be a good help in understanding LFP batteries.



### [Lithium Iron Phosphate batteries - Pros and Cons](#)

LFP (Lithium Ferrophosphate or Lithium Iron Phosphate) is currently our favorite battery for several reasons. They are many times lighter than lead acid batteries and last much ...

### [How to charge lithium iron phosphate LiFePO4 battery?](#)



The reality is that there are only a very limited few that will accurately and safely charge a Lithium Iron Phosphate battery correctly and to full states of charge, whilst doing so ...



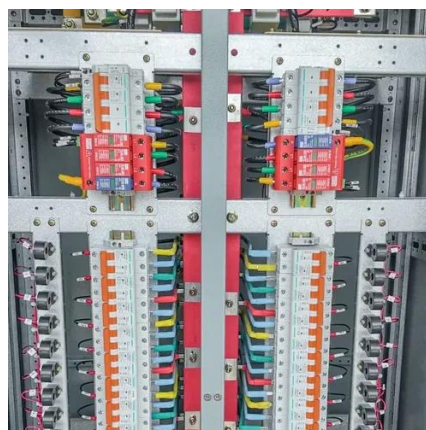
### [How to Properly Charge Lithium Iron Phosphate ...](#)

Standard Charging Rate: Recommended at 0.5C to 1C, where "1C" means charging at a rate that would fully charge the battery in ...



### [RELiON LiFePO4 Battery Frequently Asked Questions , RELiON](#)

General Frequently Asked Questions I want to upgrade to lithium iron phosphate batteries. What do I need to know? What is a BMS? What does it do and where is it located? What size ...



### [LiFePO4 12V 280Ah Lithium Battery Bluetooth ...](#)

LiFePO4 12V 280Ah lithium battery delivers high-capacity energy storage with Bluetooth monitoring for solar, home backup, and off-grid systems.



### [\[Full Guide\] How to Charge LiFePO4 Batteries - Power Queen US](#)



Want your LiFePO4 lithium battery to last years longer? Discover the 3 proven ways to charge it safely and maximize its lifespan!



### [Charging a Lithium Iron Phosphate \(LiFePO4\) ...](#)

Typically, it takes several hours to fully charge an EV, but the exact time can vary. It is recommended to use high-power charging ...

### [How to Charge Lithium Iron Phosphate Batteries](#)

SLA batteries take six hours, while lithium batteries take as little as 15 minutes. Overall, lithium charges in four hours versus SLA's 10, allowing ...



### [Master First-Time Lithium Battery Charging: Tips](#)

Lithium iron phosphate (LiFePO4) batteries may require the most time, about 6-10 hours, to finish charging. But they are very safe and ...





## Contact Us

---

For inquiries, pricing, or partnerships:

<https://www.zawojcsolina.pl>

Phone: +48 22 173 6647

Email: [info@zawojcsolina.pl](mailto:info@zawojcsolina.pl)

Scan QR code for WhatsApp.

