



How many strings are there of 48v solar battery cabinet lithium battery packs in paraguay





Overview

The lithium ion battery pack 48V20AH is generally 3.5V single lithium ion battery, so the 48V lithium ion battery pack should be $48/3.5=13.7$, taking 14 in series. If the manufacturer has supplied a set of 12V lithium-ion batteries, four of them can be connected.

The lithium ion battery pack 48V20AH is generally 3.5V single lithium ion battery, so the 48V lithium ion battery pack should be $48/3.5=13.7$, taking 14 in series. If the manufacturer has supplied a set of 12V lithium-ion batteries, four of them can be connected.

Typically, a 48V lithium battery system requires 13 lithium-ion cells connected in series, each with a nominal voltage of about 3.7V, or 15-16 LiFePO4 cells with nominal voltages of 3.2V. The correct number depends on battery chemistry and application requirements. Trusted OEM manufacturers like.

A 48V lithium battery system typically requires 13-16 cells in series, depending on chemistry. Lithium Iron Phosphate (LiFePO4) uses 15 cells (3.2V each), while Nickel Manganese Cobalt (NMC) needs 14 cells (3.6V each). Parallel configurations increase capacity without altering voltage. For example.

A 48V battery typically has 16 cells. These cells are arranged in a layout of two series, with 8 cells in each series. This configuration provides a total voltage of 48 volts. This makes the battery suitable for various applications, including electric vehicles and energy storage in renewable.

Lithium battery pack 48V20AH generally single lithium battery is 3.5V, so 48V lithium battery pack needs $48/3.5=13.7$, just take 14 in series. If the manufacturer has provided a set of 12V lithium batteries, then 4 can be connected in series. As long as the output voltage is 48V, the current is 2A.

How many strings are 48V20AH lithium ion battery packs?

When the lithium iron phosphate battery pack is packaged, different capacities and voltages are generally realized in parallel or in series. In the lithium-ion battery pack, multiple lithium-ion batteries are connected in series to obtain the.



To create a 48V battery using lithium-ion cells, you typically need 13 cells connected in series, assuming each cell has a nominal voltage of 3.7V. This configuration results in a total nominal voltage of approximately 48.1V, making it ideal for various applications, including renewable energy.



How many strings are there of 48v solar battery cabinet lithium batte



[How many cells in a 48V lithium battery? . Redway Tech](#)

Considering these various factors helps engineers determine how many individual lithium-ion cells should be incorporated into a 48V lithium battery pack for optimal ...

[Cells Per Battery Calculator](#)

The Cells Per Battery Calculator is a tool used to calculate the number of cells needed to create a battery pack with a specific voltage ...



[How Many Cells in a 48V Lithium Battery?](#)

A 48V lithium battery typically consists of 13 cells connected in series. Each lithium-ion cell has a nominal voltage of approximately 3.7V, so 13 cells in series provide the ...

[How many strings are 48V20AH lithium battery ...](#)

The ternary lithium battery standard specifies a voltage of 3.7v, full of 4.2v, three strings are 12v, 48v requires four three strings, but the ...



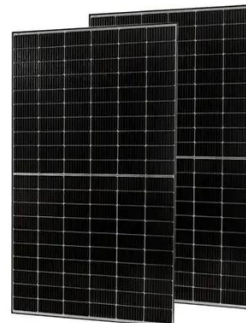
[How Many Cells in Series Are Needed for a 48V Battery?](#)

Short answer: A 48V battery typically requires 13-16 lithium-ion cells in series, depending on cell chemistry. Lithium iron phosphate (LiFePO4) cells need 15-16 cells (3.2V each), while ...



[Understanding the Number of LiPo Cells Required for a 48V Battery](#)

This guide delves into the intricacies of LiPo cells, including how many are needed to achieve 48V, and addresses various related questions about battery configurations.



[48V 1200AH 1400AH 1600AH 1800AH 2000AH ...](#)

We are best 48V 1200AH 1400AH 1600AH 1800AH 2000AH Lithium Ion Battery Pack with Cabinet suppliers,we supply best 2000ah lithium ion ...



[How to Choose the Right Ah for 48V Li-ion Battery](#) ...



Choosing the right 48V Li-ion battery pack is more important than ever. Whether you're upgrading an e-bike, powering a solar system, ...



[48V Deep Cycle Batteries , U.S. Battery Mfg. Co. , Since 1926](#)

Our 48V deep cycle batteries deliver reliable, long-lasting energy. Built from premium quality components with proven cycling ...



[Deep Cycle Lifepo4 Battery Powerwall 10KWH 48v 200AH ...](#)

The EG Solar powerwall 10kwh wall-mounted Home battery is an intelligent (10 kWh usable) residential energy storage appliance that offers homeowners the ability to store power ...



[How Many Cells Are in a 48V Battery? Configurations, Capacity, ...](#)

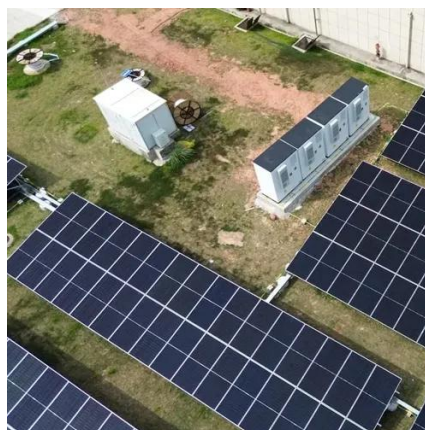
In summary, a 48V battery generally contains either 13 lithium-ion cells or 24 lead-acid cells. Understanding these configurations assists in selecting the appropriate battery for ...



[How to Choose the Right Ah for 48V Li-ion Battery ...](#)



Struggling to choose the right Ah for your 48V Li-ion battery pack? This in-depth guide covers everything you need to make the best ...



[How many strings are 48V20AH lithium battery packs? How to ...](#)

The ternary lithium battery standard specifies a voltage of 3.7v, full of 4.2v, three strings are 12v, 48v requires four three strings, but the electric vehicle lead-acid battery is fully ...



[How to Choose the Right Ah for 48V Li-ion Battery Pack?](#)

Choosing the right 48V Li-ion battery pack is more important than ever. Whether you're upgrading an e-bike, powering a solar system, or building a new EV, selecting the ...



[How Many Solar Panels Are Needed to Charge a 48V Lithium Battery?](#)

To charge a 48V lithium battery, the number of solar panels required depends on the battery's capacity (Ah), daily energy consumption, solar panel wattage, and sunlight availability. For ...



[How many strings of 48v lithium battery pack](#)



For 48V battery packs, ternary lithium batteries generally use 13 strings or 14 strings, and lithium iron phosphate batteries generally use 15 strings or 16 strings.

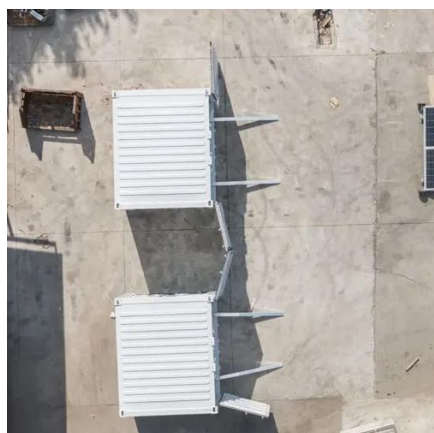
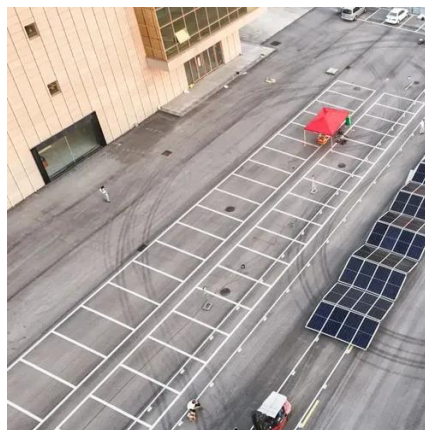


[How Many Lithium Cells for 48V? Lithium Cells for 48V System](#)

Choosing the right number of lithium cells for a 48V battery system depends largely on battery chemistry and performance requirements. Typically, 13 lithium-ion or 15-16 ...

[Battery Strings , Newmar Powering the Network](#)

Newmar can assist you in specifying your battery strings and supply the proper system for your application. Once we determine your needs, we ...



[Solar Off-Grid Lithium Battery Banks & Backup Systems , BigBattery](#)

BigBattery provides lithium-ion battery packs that are perfect for powering any off-grid solar application. Browse our products today to find what you need.

[What does the number of lithium battery strings represent](#)

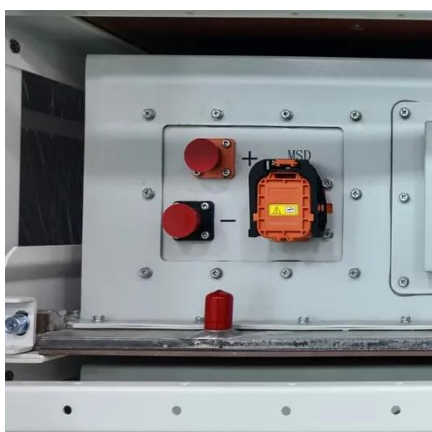


How many strings should a lithium battery have?
Therefore, the lithium battery must also be about 58v, so it must be 14 strings to 58.8v, 14 times 4.2, and the iron-lithium full charge is about ...



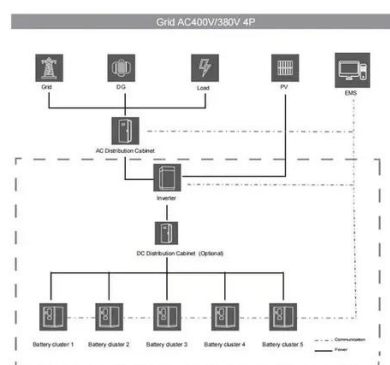
How many strings are 48V20AH lithium ion battery packs?

When the lithium iron phosphate battery pack is packaged, different capacities and voltages are generally realized in parallel or in series. In the lithium-ion battery pack, multiple lithium-ion ...



How Many Lithium-Ion Cells Are Needed for a 48V Battery?

A typical 48V lithium battery contains 13 cells connected in series. Each cell provides around 3.7V, and the total voltage is achieved by multiplying this value by the cell count.



HOW DO YOU CALIBRATE A LITHIUM BATTERY SPOT WELDER?

How many volts does a lithium phosphate battery take? The nominal voltage of a lithium iron phosphate battery is 3.2V, and the charging cut-off voltage is 3.6V. The nominal voltage of ...



How many lithium batteries for 48V?

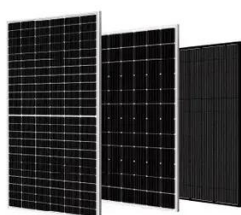


A 48V lithium battery system typically requires 13-16 cells in series, depending on chemistry. Lithium Iron Phosphate (LiFePO4) uses 15 cells (3.2V each), while Nickel Manganese Cobalt ...



[Lithium Series, Parallel and Series and Parallel](#)

Lithium batteries are connected in series when the goal is to increase the nominal voltage rating of one individual lithium battery - by connecting it in series strings with at least one more of the ...



[How Many Cells in a 48V Lithium Battery?](#)

In conclusion, a typical 48V lithium battery consists of 13 cells connected in series, providing reliable power for various applications. Understanding this configuration is essential ...





Contact Us

For inquiries, pricing, or partnerships:

<https://www.zawojcsolina.pl>

Phone: +48 22 173 6647

Email: info@zawojcsolina.pl

Scan QR code for WhatsApp.

