



How many volts does the battery cabinet have to replace the battery





Overview

The average voltage for a residential energy storage battery system typically varies from 12V to 48V. These values represent standard configurations of lead-acid batteries and are sufficient for most residential applications, particularly in off-grid or hybrid solar setups.

The average voltage for a residential energy storage battery system typically varies from 12V to 48V. These values represent standard configurations of lead-acid batteries and are sufficient for most residential applications, particularly in off-grid or hybrid solar setups.

The voltage of energy storage battery cabinets typically ranges from 12V to 800V, influenced by application requirements, technology used, and the configuration of battery cells. 1. Commonly, lead-acid batteries exhibit 12V or 48V configurations, suitable for smaller setups and residential usage.

ower to the load as well as the necessary power required to keep the batteries at the proper float voltage. When AC power fails, the batteries will discharge in order to provide the necessary backup power to the load. It is the responsibility of the customer to make sure the batteries are not.

The PWRcell Battery Cabinet allows system owners the flexibility to scale from an economical 9kWh to a massive 18kWh by installing additional battery modules to the PWRcell Battery Cabinet. An existing PWRcell Battery Cabinet can be upgraded with additional modules. Use the graphic below and the.

configured for top terminal 12V VRLA batteries for immediate and easy installation. The BTS Battery Cabinet is the first of its kind to feature a built-in control panel to monitor the charge of the batteries it contains. This ensures fresh batteries are always available and are needed to swap a.

Upgrade kit P-106000220 facilitates replacing one existing two-row battery tray assembly with two single-row battery assemblies. The total battery string voltage in a 9355 20-30 kVA UPS is 216V (18 batteries, where each battery is 12V nominal). Two strings fit in each battery shelf of the 9355.

Check for voltage with both AC and DC voltmeters before working within the UPS.



Check for voltage with both AC and DC voltmeters before making contact. Only properly trained and qualified personnel wearing appropriate safety headgear, gloves, shoes and glasses should be involved in installing the.



How many volts does the battery cabinet have to replace the battery



[UBC80 Battery Cabinet Installation, Operation.](#)

Isolates the battery cabinet from the UPS Divides the 480VDC battery string into two (2) battery strings of 240VDC each. Unlocks the battery cabinet doors to allow access to the cabinet ...

[MANY definition and meaning . Collins English Dictionary](#)

You use many to indicate that you are talking about a large number of people or things. I don't think many people would argue with that. Not many films are made in Finland. Do you keep ...



51.2V 300AH



[BTS-1 12 Volt The Fail Safe, Mobile, Fully Charged, Spare ...](#)

BigBoy Fully Charged Spare Battery Replacement System: A versatile, customizable, fixed location battery cabinet that can house a variety of various critical spare replacement batteries ...

[How many volts is the energy storage battery ...](#)

The specific voltage depends on the battery types used, such as lithium-ion or lead-acid, and the overall system configuration. ...



Many

A large number of persons or things: "For many are called, but few are chosen" (Matthew 22:14).

many

Many, innumerable, manifold, numerous imply the presence or succession of a large number of units. Many is a popular and common word for this idea: many times. Numerous, a more ...



What is the voltage of the energy storage battery cabinet?

The voltage of energy storage battery cabinets typically ranges from 12V to 800V, influenced by application requirements, technology used, and the configuration of battery cells.

How Many Volts Does A Car Battery Need To Start? Essential Voltage



A car battery typically needs about 12 volts to start an engine, with a fully charged battery reading around 12.6 volts at rest. During engine cranking, voltage can temporarily drop ...

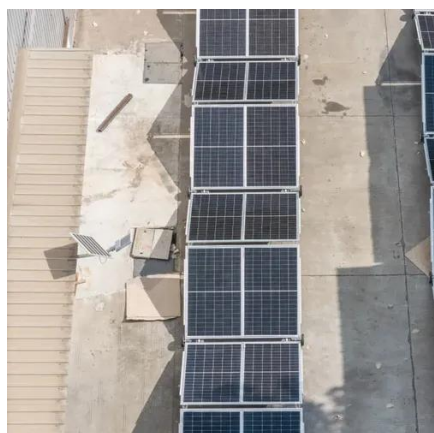


[9V Battery Voltage Chart](#)

9V Battery Voltage Chart: Learn how to read and understand the voltage levels of 9V batteries for optimal use and performance.

[Liebert® EXS External Battery Cabinet Installer/User Guide](#)

With the Battery Cabinet DC circuit breaker closed and the connected UPS operating, measure and record battery float voltage. With the DC circuit breaker open, measure and record the ...



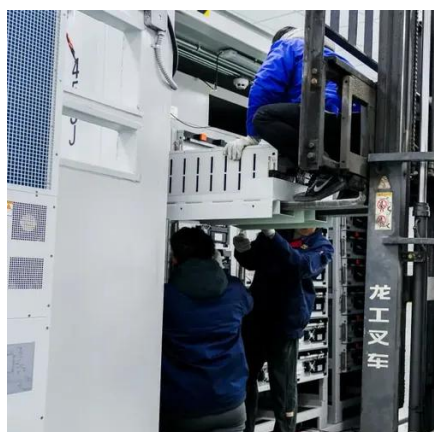
FAQs

Q: How many battery extension cabinets can be added to the EI system? A: Currently, up to four EI batteries (two strings of two) can be connected for a total capacity of 38.6 kWh.

[How Many Volts Should A Car Battery Have? \[12 ...](#)



Have problems with your battery? We'll go over how to identify and test a battery's health, and to identify how many volts should ...



How Many Volts Should a Car Battery Have?

A car battery typically operates at 12 volts, but understanding the voltage your battery should have is crucial for ensuring your vehicle runs smoothly. If you're wondering ...

What Should Car Battery Voltage Be While Running?

A standard 12-volt battery should have a voltage between 13.5 and 14.5 volts when the car is running. ...



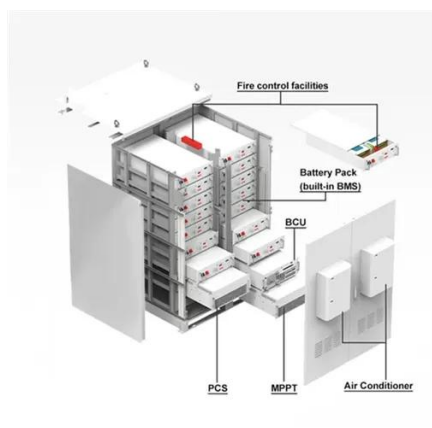
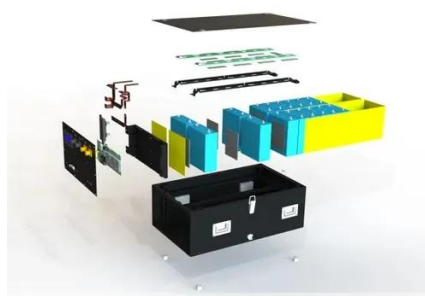
Battery Cabinet

The well-ventilated Battery Cabinet provides a housing for batteries that does not allow hydrogen to build up to a dangerous level inside the enclosure. Adequate ventilation must be provided ...

many



Many is used only with the plural of countable nouns (except in the combination many a). Its counterpart used with uncountable nouns is much. Many and much merge in the ...

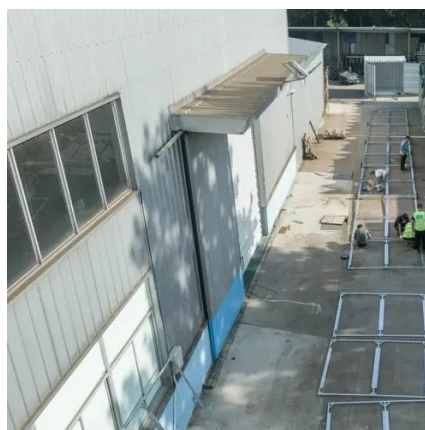


[Marine Battery Voltage Chart . Battery Tools](#)

At this point, the battery is considered dead or deeply discharged, and any additional use can cause permanent damage to the battery. Is 12.5 volts ...

[many . Dictionaries and vocabulary tools for English](#)

many or much? Many is used with words for things that we can count. Much is used with words for things that we cannot count. Compare: Do you have many things to do today? Do you have ...



[MANY . English meaning](#)

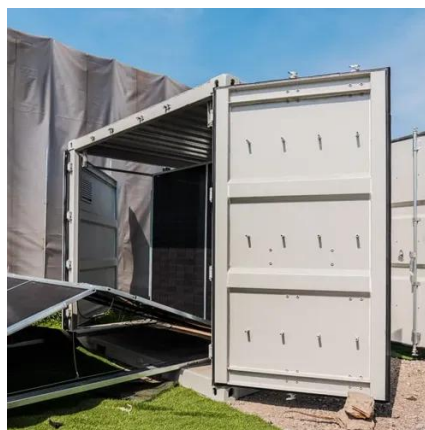
We use many to refer to a large number of something countable. We most commonly use it in questions and in negative sentences: ...



[MANY Definition & Meaning . Dictionary](#)



MANY definition: constituting or forming a large number; numerous. See examples of many used in a sentence.



[MANY Definition & Meaning](#)

The meaning of MANY is consisting of or amounting to a large but indefinite number. How to use many in a sentence.

[D Cell Battery Guide: How Many Volts Are In A D Cell Battery ...](#)

A standard D cell battery provides a voltage of 1.5 volts. This voltage is typical for dry cell batteries, including C, AA, and AAA types. D batteries are



[Eaton 9355 \(20/30 kVA\) UPS battery upgrade instructions](#)

The total battery string voltage in a 9355 20-30 kVA UPS is 216V (18 batteries, where is each battery is 12V nominal). Two strings fit in each battery shelf of the 9355 20-30 kVA UPS. The ...

many determiner



Definition of many determiner in Oxford Advanced Learner's Dictionary. Meaning, pronunciation, picture, example sentences, grammar, usage notes, synonyms and more.



[MANY Synonyms: 38 Similar and Opposite Words](#)

Synonyms for MANY: numerous, multiple, several, countless, some, all kinds of, quite a few, multitudinous; Antonyms of MANY: few, limited, countable



[AAA Battery Voltage: How Many Volts Are Triple A](#)

...

Learn how many volts are in a triple A battery (1.5V vs 1.2V), see AAA battery voltage chart, and compare chemistry, testing, and ...



BATTERY CABINET

You can upgrade an existing PWRcell Battery Cabinet by adding Battery Modules and a Module Spacer (APKE00008). A Module Spacer is only required for battery configurations with an odd ...

[AAA Battery Voltage Chart](#)

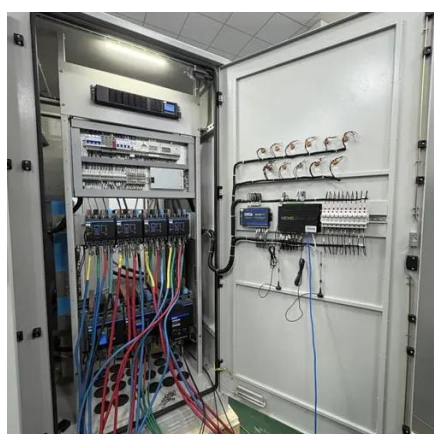


An AAA battery voltage chart is a useful tool for understanding battery performance and lifespan. AAA batteries typically have a nominal ...



[Mitsubishi Electric Power Products, Inc. BC43 Battery ...](#)

Battery cabinets that are not supplied with an incorporated DC output disconnect device must have an appropriate disconnect device provided external to the cabinet.



[Golf Cart Battery Voltage Chart , 48v, 6v, 8v, 36v](#)

Golf Cart Battery Voltage Chart This is the golf cart battery voltage chart: Check out Golf Cart Battery Charging Tips to learn how to extend your ...





Contact Us

For inquiries, pricing, or partnerships:

<https://www.zawojcsolina.pl>

Phone: +48 22 173 6647

Email: info@zawojcsolina.pl

Scan QR code for WhatsApp.

