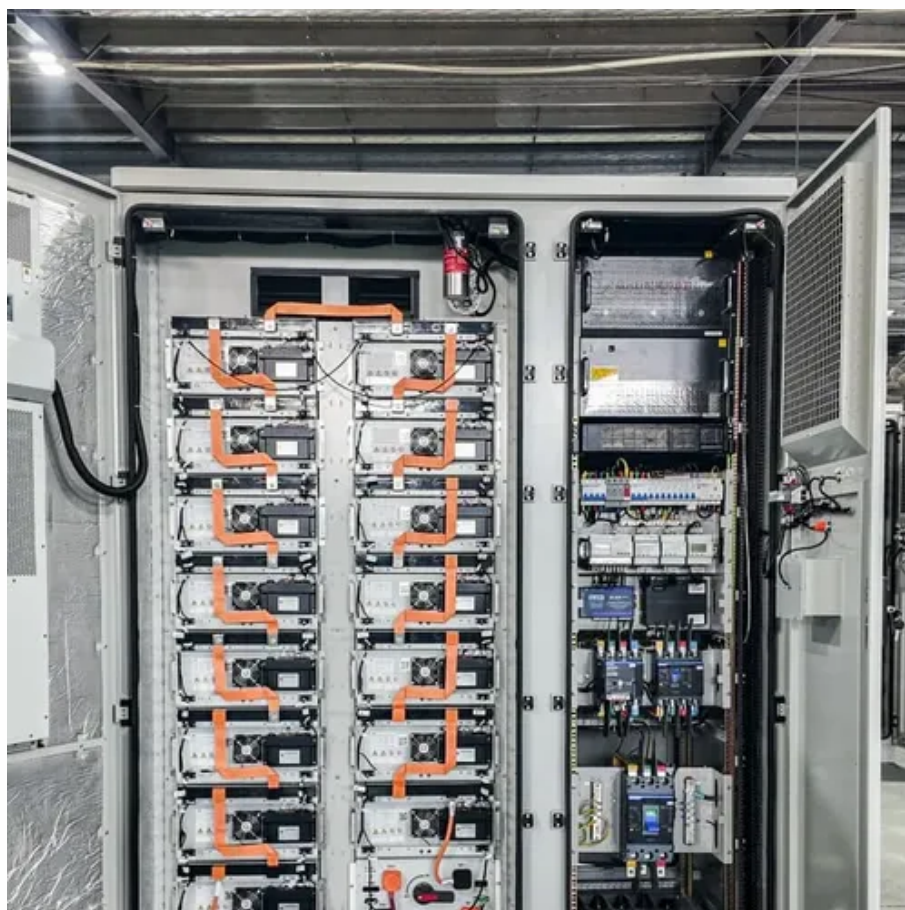




How many watts of solar energy are there in 26 square meters





Overview

Here's what's shocking: A single square meter of solar panel can generate anywhere from 150 to 250 watts under ideal conditions. But "ideal" rarely exists in real life. Your roof's orientation, local climate, shading, and even the dust on your panels can slash that output.

Here's what's shocking: A single square meter of solar panel can generate anywhere from 150 to 250 watts under ideal conditions. But "ideal" rarely exists in real life. Your roof's orientation, local climate, shading, and even the dust on your panels can slash that output.

The answer lies in something most solar salespeople never properly explain— solar irradiance and your actual energy potential per square meter. Here's what's shocking: A single square meter of solar panel can generate anywhere from 150 to 250 watts under ideal conditions. But "ideal" rarely exists.

Solar panels have become a cornerstone of renewable energy, but many wonder: How much power can a single square meter of solar panels actually produce?

Let's break down the science behind photovoltaic efficiency. Under optimal conditions (5 peak sun hours): At noon under direct sunlight: *Note: 1m².

The sunlight received per square meter is termed solar irradiance. As per the recent measurements done by NASA, the average intensity of solar energy that reaches the top atmosphere is about 1,360 watts per square meter. You can calculate the solar power per square meter with the following.

How many watts of solar energy are there in 2.6 square meters?

Answering the query directly, 2.6 square meters of solar energy can produce approximately 520 to 780 watts under optimal conditions, depending on the efficiency of the solar panels and the amount of sunlight they receive. 1, The average.

This result indicates that each square meter of the area contributes approximately 6.34 watts of power. Practical Examples: Real-World Applications of Power Per Square Meter Scenario: A solar panel system generates 1,500 watts of power and



covers an area of $10 \text{ (m}^2\text{)}$. Practical impact: The system.

1350 represents the average solar constant in watts per square meter. Measure the surface area (A) of the solar panel or region in square meters. Input the value into the calculator. Click the Calculate button to find the estimated energy production. The estimated solar energy produced would be.



How many watts of solar energy are there in 26 square meters



PVWatts Calculator

Estimates the energy production and cost of energy of grid-connected photovoltaic (PV) energy systems throughout the world. It allows homeowners, small building owners, installers and ...

[How many watts of solar energy are there in 2.6 square meters?](#)

If we calculate the potential energy generation from 2.6 square meters, we can see that the efficiency of the panels plays a fundamental role. For panels at 25% efficiency, the ...



[Solar Power per Square Meter Calculator](#)

A solar power per square meter calculator takes details regarding these factors and then gives the accurate output generated by the solar panel per square meter.

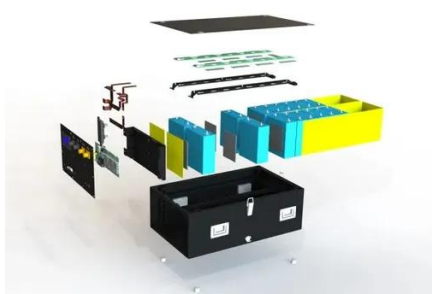
[Solar Energy Calculator](#)

1350 represents the average solar constant in watts per square meter. Measure the surface area (A) of the solar panel or region in square meters. Input the value into the calculator. Click the ...



[Solar Energy Generation Per Square Metre: A ...](#)

On a clear day, each square metre of the Earth's surface receives approximately 1,000 watts of solar energy, also known as 1 ...



[Solar Panel Size Calculator - Estimate Panel Width](#)

The Solar Panel Size Estimator Calculator is a tool designed to help you determine the appropriate size of solar panels needed for your ...



[How Many Solar Panels Do I Need To Power a ...](#)

An easy guide to finding out how many solar panels you need to install to fully offset your electricity usage.



[Solar Panel Watts Per Square Meter Explained](#)



Solar panel watts per square meter (W/m) measures the power output of a solar panel based on its size. Compare solar panels to see which generates most electricity per square meter. A ...

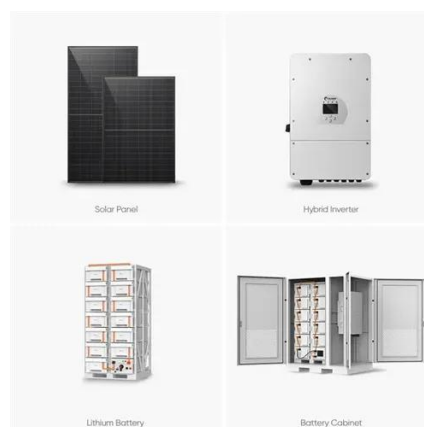


[Solar Energy Generation Per Square Metre: A Complete Guide](#)

On a clear day, each square metre of the Earth's surface receives approximately 1,000 watts of solar energy, also known as 1 kW/m². This energy can be converted into ...

[How many watts are 8 square meters of solar panels?](#)

Harnessing the power of solar energy through an installation of 8 square meters of solar panels presents an opportunity for both economic savings and environmental stewardship.



[When the Sun Is Shining, How Much Solar Energy Falls on a Square Meter](#)

The energy conversion rates of solar panels are fundamental in determining the amount of watts per square ...

[How many watts of solar energy per 100 square meters](#)



1. Approximately 100 to 150 watts of solar energy can be generated per 100 square meters, depending on various factors, including location, solar panel efficien...



[How many amps of solar energy are there in 6 square meters?](#)

The answer to how many amps of solar energy are there in 6 square meters lies in several factors, including the efficiency of the solar panel, the amount of sunlight received, and ...

[Solar Rooftop Calculator: How Many Solar Panels ...](#)

Here is how you can use this solar rooftop calculator to determine the solar system size and number of 100-watt, 300-watt, or 400-watt solar panels ...



[Power Per Square Meter Calculator](#)

This result indicates that each square meter of the area contributes approximately 6.34 watts of power. Practical Examples: Real-World Applications of Power Per Square Meter. ...

[How many square meters are 100 watts of solar energy](#)



Understanding the Relationship Between Solar Energy and Area Coverage It can be estimated that 100 watts of solar energy typically requires around 0.75 to 1 square meter of ...



[How many watts of solar energy can produce 6 ...](#)

The conversion of 6 square meters of solar panels can produce around 1,500 to 2,000 watts of solar energy, depending on ...



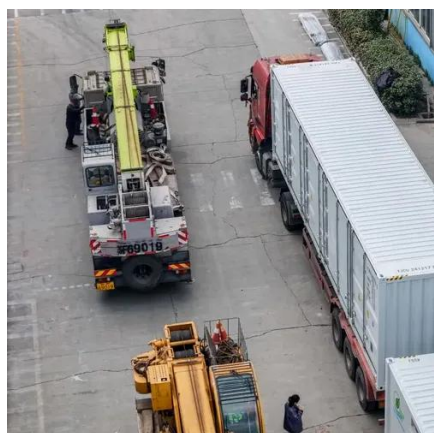
[Solar Power Per Square Meter Calculator](#)

Calculate solar panel energy output per square meter. Get accurate daily, monthly, and annual production estimates based on location, panel specs, and system losses.



[How Much Solar Energy Hits The Earth Per Square Meter](#)

The amount of solar energy per unit area arriving on a surface at a particular angle is called irradiance which is measured in watts per square metre, W/m², or kilowatts per ...



[How much solar power can my roof generate?](#)



In a perfect world, the average roof in the U.S. can generate around 21,840 kilowatt-hours (kWh) of solar electricity annually--that's ...





Contact Us

For inquiries, pricing, or partnerships:

<https://www.zawojcsolina.pl>

Phone: +48 22 173 6647

Email: info@zawojcsolina.pl

Scan QR code for WhatsApp.

