



How to check where the solar current is in the battery cabinet





Overview

In this article you will learn how to measure the current the battery controller is charging the battery with. This test is done to help in determining issues with the battery staying charged, or to verify the battery controller works properly.

In this article you will learn how to measure the current the battery controller is charging the battery with. This test is done to help in determining issues with the battery staying charged, or to verify the battery controller works properly.

In this article you will learn how to measure the current the battery controller is charging the battery with. This test is done to help in determining issues with the battery staying charged, or to verify the battery controller works properly. This procedure is the same for solar or AC charged.

Check the Solar Controller (Charge Controller) Locate your solar charge controller (often in a cabinet or electrical bay). If it's dark or covered, it will show zero or idle.
→ If the screen is blank or showing zero volts/amps during full sun, your system may not be functioning. ☐☐ 2. Check.

If your battery isn't charging, or you suspect your solar panel might not be working properly, don't worry — testing your solar panel is straightforward with the right tools. This step-by-step guide will help you verify if your panel is producing the right voltage and current to keep your setup.

Ensuring your solar panel is effectively charging your battery is crucial for optimal energy production and system reliability. Whether you're powering an RV, off-grid cabin, or security camera, a malfunctioning charging system can leave you without power when you need it most. In this.

This product, when installed, is permanently wired to the home electrical panel. There are three main components as shown below, including the PWRcell Inverter (1), the PWRcell Battery Cabinet (2), and the protected loads backup panel (3). After we complete the system commissioning process, the.

One of the first steps in ensuring that your solar panel is charging your battery is to perform a visual inspection of all connections. Start by examining the connections at the solar panel itself. Ensure that the wires are firmly attached to the terminals



and that there is no visible corrosion or. How to check if solar panel is charging battery?

If the multimeter shows a reading around 12-20v during peak sunlight times, the solar panel is working and charging the battery. Before we get into how to check if solar panel is charging the battery, you should first understand the underlying principles.

How do you test a solar panel?

Keep everything wired up as normal. Set your multimeter to DC Amps, and place it in-line between the solar panel and the solar input of the charge controller. You should see current flow consistent with sun conditions and battery state of charge. Troubleshooting Checklist Final Tips Always test in full sunlight, ideally around midday.

How do you test a solar panel without a load?

This test shows the voltage output of your solar panel without a load connected. Set your multimeter to DC volts (V). Disconnect the panel from the charge controller or battery. Place the red probe on the positive (+) terminal, and black on the negative (–) terminal of the solar panel or Anderson plug. Read the voltage. Expected Result:.

How do I know if my solar panel is bad?

Check the Charge Controller: Ensure the charge controller is properly connected between the solar panel and battery. A malfunctioning unit can disrupt the charging process. Gather a Multimeter: Use a multimeter set to the DC voltage setting to measure electrical output.



How to check where the solar current is in the battery cabinet



[How to Check if Solar Panel is Charging Battery: Simple Steps for](#)

Discover how to determine if your solar panels are charging your batteries effectively. This article offers practical steps to assess your solar setup, detailing the ...

A0001424068

SAVE THESE INSTRUCTIONS for future reference. This manual contains important instructions that must be followed during placement, operation, and maintenance of the unit and its ...



[Installation and Owner's Manual](#)

See the Generac PWRcell Battery Owner's Manual for complete information on user-configurable features. The information in this manual is accurate based on products produced at the time of ...

[importance of earthing a rack battery and its cabinet](#)

If only one of the above happened, the enclosure would never reach above the battery voltage, but if the battery positive or negative ...



[How to Check if Solar Panel Is Charging Battery?](#)

Using a multimeter to measure the voltage of your battery is a reliable method to determine if your solar panel is charging it correctly. This process involves several steps, and ...



[How to Check if Solar Panel is Charging Battery: A Complete ...](#)

Knowing how to tell if solar panel is charging battery will help prevent unexpected power failures and costly replacements. So, follow along with me, as we delve into the juicy ...



[How To Check If Solar Panel Is Charging Battery: Complete ...](#)

Learn 5 proven methods to test if your solar panel is charging your battery. Step-by-step guide with multimeter testing, troubleshooting tips, and safety precautions.



[Installation and Owner's Manual](#)



This installation manual provides instructions and recommendations for installing and commissioning the Generac PWRcell® Battery. The PWRcell Battery is designed to house ...



[Step-by-Step Solar Battery Cabinet Installation Guide](#)

This article provides a detailed guide on installing a solar battery cabinet, helping you complete the installation process smoothly and enjoy the benefits of clean energy.

[How To Check Solar Battery Health](#)

This guide provides a comprehensive guide on how to check the health of solar batteries, including voltage testing with a multimeter, capacity testing by discharging the ...



[How to Check if Solar Panel is Charging Battery: ...](#)

Discover how to determine if your solar panels are charging your batteries effectively. This article offers practical steps to assess your ...

[How do I tell if my solar is working?](#)



? 2. Check Battery Voltage Over Time Use your RV monitor panel or a multimeter to track house battery voltage. With sunlight and no big loads, voltage should slowly rise above ...



[EG4®-LL 48V 100AH Rack-Mounted Batter](#)

3.1 Product Description The EG4® 48V-LL rack-mounted lithium batteries are ideal for low-voltage energy storage system applications. These batteries use lithium iron phosphate cells with the ...



[How to Test If Your Solar Panel Is Working Correctly \(Step-by ...](#)

Set your multimeter to DC Amps, and place it in-line between the solar panel and the solar input of the charge controller. You should see current flow consistent with sun ...



[Guidelines for Current Transformer \(CT\) installation](#)

Consumption metering: IQ Gateway/IQ Combiner supports split-core or clamp-style current transformers for consumption metering. IQ Battery metering: For sites with IQ Battery, the IQ ...



[Generac PWRcell Outdoor Rated \(3R\) Battery Cabinet](#)



See Figure 4-23. Inside of the PWRcell battery, battery modules are stacked 2-deep on three levels, allowing for up to 6 modules to be connected in a series. PAGE 26 Installing Generac ...



[How to make a wall cabinet on the balcony with solar energy](#)

Constructing a sturdy wall cabinet necessitates attention to detail to guarantee durability against weather conditions. The installation of solar components requires knowledge ...

[How to Measure Charging Current from the Battery Controller](#)

In this article you will learn how to measure the current the battery controller is charging the battery with. This test is done to help in determining issues with the battery staying charged, or ...



[How to make a solar powered cabinet on the balcony](#)

4. MAINTENANCE TIPS Regular maintenance is essential for the longevity and efficiency of the solar-powered cabinet. Periodic cleaning of solar panels helps maintain their ...

[SOK 12 slot battery cabinet review: DO NOT BUY!!!!!!](#)



Also, on further inspection, I found the holes pre-drilled for the hinges are too wide, and therefore are completely daylighted into the electronics cabinet even with the doors ...



Generac PWRcell

The battery can be used for grid- connected solar applications, such as self-supply, rate arbitrage, and clean backup power. The chart below describes the color and strobing interval of the LED ...



[I'm In An Outage. Why Aren't My Protected Loads Powered?](#)

Inverter Statuses Displayed on the Main Screen
Grid Tie: This system mode is only utilized for PWRCell Systems without a battery cabinet. Clean Backup: Prioritizes charging the battery ...



[How to Test a Solar Panel: Step-by-Step Guide & Troubleshooting](#)

Learn how to test a solar panel with our step-by-step guide. Check voltage, current, and wattage to ensure optimal performance and efficiency for your solar system.

[How to Check if Solar Panel Is Charging Battery?](#)



Using a multimeter to measure the voltage of your battery is a reliable method to determine if your solar panel is charging it correctly. ...

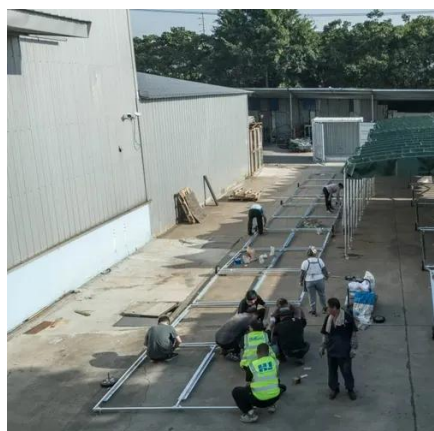


Battery Enclosures

Battery enclosures and cabinets are a safe way to store batteries and to protect them from the elements as well as providing a line of defense ...

Generac PWRcell

Battery Cabinet Status LED The PWRcell battery is the storage component of the PWRcell system. The battery can be used for grid- connected solar applications, such as self-supply, ...



[How to check where the solar light is broken](#)

Importantly, the wiring connections between the solar panel, battery, and light must all be secure and free of corrosion. The effective ...



Contact Us

For inquiries, pricing, or partnerships:

<https://www.zawojesolina.pl>

Phone: +48 22 173 6647

Email: info@zawojesolina.pl

Scan QR code for WhatsApp.

