



How to connect the batteries in the communication high voltage battery cabinet





Overview

Connect the cables to your battery terminals by removing the terminal bolts, inserting them through the eyelet of the proper cable, and reseating the bolt into the terminal block to the correct torque. DO NOT finger tighten the terminal bolts.

Connect the cables to your battery terminals by removing the terminal bolts, inserting them through the eyelet of the proper cable, and reseating the bolt into the terminal block to the correct torque. DO NOT finger tighten the terminal bolts.

step-by-step disconnect of the system during maintenance. The technical parameters are shown in Table 2: Besides, there is a WIFI module included in HVCB-02 and can be remotely monitored through the P S, so here are the product series of battery units to achieve higher energy storage. Each series of.

Connect the cables to your battery terminals by removing the terminal bolts, inserting them through the eyelet of the proper cable, and reseating the bolt into the terminal block to the correct torque. DO NOT finger tighten the terminal bolts. They require a specific torque (60 in-lb/7nm) to ensure.

Read these instructions carefully and look at the equipment to become familiar with it before trying to install, operate, service or maintain it. The following safety messages may appear throughout this manual or on the equipment to warn of potential hazards or to call attention to information that.

Use a voltmeter to verify that no voltage or the expected voltage is present. Check for voltage with both AC and DC voltmeters prior to making connections. Insulated tools appropriately rated for use are not hazardously high, the battery can deliver large amounts of current. Exercise extreme caution not to.

When batteries operate efficiently, they support uninterrupted communication services, even during power outages. Neglecting maintenance or improper configuration can reduce performance, shorten battery lifespan, and lead to costly downtime. You must also monitor charging processes to avoid.

Under certain conditions, batteries can vent potentially explosive gas (hydrogen). Never enclose batteries or batteries have been taken to ensure the system arrives safe and undamaged. However, upon receipt, you should inspect the entire shipment,



including the crate and any ill IMMEDIATELY while the carrier.



How to connect the batteries in the communication high voltage battery



[BC58 Battery Cabinet Installation, Operation, & Maintenance ...](#)

Never lay loose cables, metal parts or tools on top of batteries. Under certain conditions, batteries can vent potentially explosive gas (hydrogen). Never enclose batteries or battery in a sealed ...

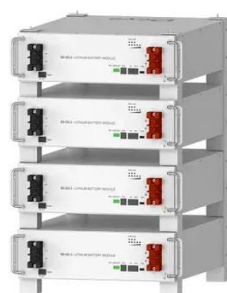
High Voltage Battery

When using the battery. Follow any instructions or warnings in this document, otherwise it may result in electric shock, serious injury, or death, or may damage the battery and



[ESTEL Telecom Battery Bank Setup and ...](#)

Learn how to set up and maintain a telecom battery bank for reliable power, extended battery life, and uninterrupted telecom ...

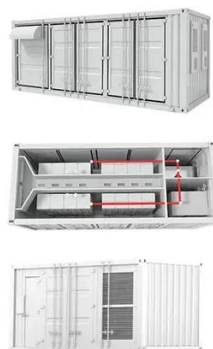


Deye Official Store

10 years warranty

[More Communication, More Power, The Pylontech Low-Voltage ...](#)

A Pylontech Low Voltage Hub (LV-HUB) allows you to combine more than the default 16 Pylontech batteries for up to 96 batteries in a communicating 460.8 kWh power bank.



[IS001 Battery Energy Storage System Setup and Usage Guide](#)

1. Introduction Battery Energy Storage System (IS001) all and medium-sized industrial or commercial businesses. It supports higher voltage by series by connecting 4 to 15 batteries in ...

[Lithium Series, Parallel and Series and Parallel](#)

Lithium Series, Parallel and Series and Parallel Connections Introduction Lithium battery banks using batteries with built-in Battery Management Systems (BMS) are created by connecting ...



[How to Install a -48V Telecom Power System: A Step-by-Step ...](#)

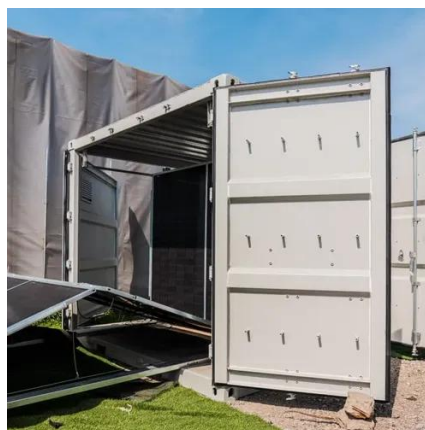
Learn how to install a -48V telecom power system step-by-step. This guide covers equipment selection, design considerations, wiring, and essential maintenance tips for reliable ...



[How to Connect LiFePO4 Batteries Safely in Parallel or Series](#)

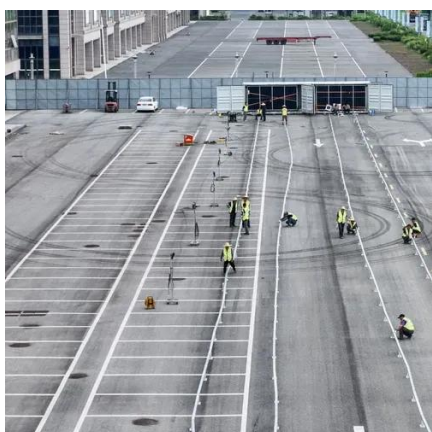


Connect the positive terminal of Battery A to the negative terminal of Battery B. For more batteries (e.g., 3 or 4 in series), repeat the pattern: positive to negative.



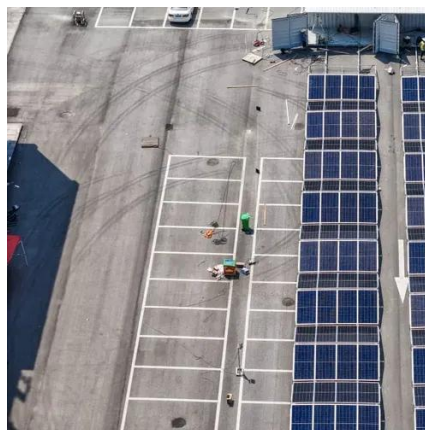
[Retrieving HV Battery Vitals Model S, Model X, Model 3 and ...](#)

This document provides instructions for third parties in Europe to use the Tesla High Voltage Battery Communication Tool application to retrieve Tesla-specific data (vitals) from End-of-Life ...



[EG4-LL Rack Mounted Battery Manual\(2022-10-20\).pdf](#)

This battery will connect directly via an EG4 battery communications cable or a standard CAT 5, 5e, or 6 cable (for closed loop communications with non-EG4 inverter types)



[How To Connect Batteries In Series and Parallel](#)

Connecting batteries in series increases the voltage of a battery pack, but the AH rating (also known as Amp Hours) remains the ...



[EG4 \(48V/100AH\) LL Battery Manual](#)



Why connect in parallel? You are able to connect multiple EG4-LL batteries in parallel to increase the capacity and current of your power storage system. When you connect multiple EG4-LL ...



5. Communication wiring

Like with all cabling, it is important that the communication cables are of good quality. Also, their connectors need to be of good quality and that they have been crimped on the cable correctly. ...

EG4® LL

© 2025 EG4® ELECTRONICS, LLC. ALL RIGHTS RESERVED. VERSION 2.3.3 , INFORMATION SUBJECT TO CHANGE WITHOUT NOTICE. MODEL #: SR-48-100-IN-01



EG4® LIFEPOWER4 48V V2 SERVER RAC

*When running the battery in open-loop communications, note that battery SOC% and battery voltage do not directly correlate.



[ESTEL Telecom Battery Bank Setup and Maintenance Guide](#)



Learn how to set up and maintain a telecom battery bank for reliable power, extended battery life, and uninterrupted telecom operations during outages.



[ETHOS BATTERY USER MANUAL](#)

Connect the RS-485 end of the communication cable to the "Com 1" port of the battery you want to monitor, and connect the USB end to your laptop. Check your laptop's device manager to ...



[HIGH VOLTAGE ENERGY STORAGE BATTERY USER](#)

...

The battery pack ID connected to the hybrid inverter must be set to ID1, indicating that it is the host, other batteries do not need to be set, and the ID1 host will automatically assign an ...



[High Voltage Battery Guide: Types, Applications ...](#)

High voltage battery guide: Compare Li-ion, LiFePO4, NCM types. Learn about EV and storage applications, safety tips, and ...



[3. Battery bank wiring](#)



When creating a lead-acid battery bank with a higher voltage, like 24 or 48V you will need to connect multiple 12V batteries in series. But there is one ...



[Galaxy Lithium-ion Battery Cabinet](#)

Important Safety Instructions -- SAVE THESE INSTRUCTIONS. Read these instructions carefully and look at the equipment to become familiar with it before trying to install, operate, service or ...

[Battery Communications Integration Guide](#)

The Sol-Ark will need an eGauge monitoring device, an eGauge USB-485 converter, and a wired internet connection to establish communications with the Blue Ion battery.

TAX FREE

Product Model
HJ-ESS-215A(100KW/215KWh)
HJ-ESS-115A(50KW 115KWh)

Dimensions
1600*1280*2200mm
1600*1200*2000mm

Rated Battery Capacity
215KWH/115KWH

Battery Cooling Method
Air Cooled/Liquid Cooled



[3. Battery bank wiring](#)

When creating a lead-acid battery bank with a higher voltage, like 24 or 48V you will need to connect multiple 12V batteries in series. But there is one problem with connecting batteries in ...

[-48 VDC Battery Cabinet Installation and User Manual ...](#)



Connect the power system's battery cable terminated in an Anderson connector to the first battery cabinet's battery cable terminated in a mating Anderson connector.



[LOW VOLTAGE 48V RESIDENTIAL SK140-0026-005](#)

Sol-Ark will support service calls with basic battery diagnostic methods within our general configuration and troubleshooting methods (communications connection, electrical, ...)

[IS005BatteryEnergyStorageSystem SetupandUsageGuide](#)

1.2 High voltage control box (HVCB): High voltage control box is the terminal of voltage and data collects from a series of Battery modules. The system parallels battery clusters that work with ...





Contact Us

For inquiries, pricing, or partnerships:

<https://www.zawojcsolina.pl>

Phone: +48 22 173 6647

Email: info@zawojcsolina.pl

Scan QR code for WhatsApp.

