



How to open the battery cabinet of solar communication





Overview

Turn off all AC circuit breakers supplying the battery cabinet and the air conditioner. On the bottom of the battery inverter, turn OFF (counterclockwise) the two (2) black PCS DC switches. Open the battery cabinet door, and keep it open using the support bar located inside the.

Turn off all AC circuit breakers supplying the battery cabinet and the air conditioner. On the bottom of the battery inverter, turn OFF (counterclockwise) the two (2) black PCS DC switches. Open the battery cabinet door, and keep it open using the support bar located inside the.

This manual describes the procedure for replacing the communication module for the CSS-OD. There are two versions of the system: On-grid system and the Backup Interface (BUI) system. The procedure for shutting down the system differs depending on the installed system. Turn off all AC circuit.

Do not disassemble the cabinet. Contact the distributor for any issues in need of repair for proper handling instructions. Incorrect servicing or re-assembly may result in a risk of electric shock or fire to be present at the busbar. Doing so can result in working with the batteries. Short-circuiting the.

Up to four external battery cabinets may be connected to the SolaHD S5KC UPS to increase battery run times. The external battery cabinet (EBC) requires one of the optional EBC cable kits for connection to the UPS. Each optional cable kit contains the power and communication cables required for.

Up to four external battery cabinets may be connected to the SolaHD S5KC UPS to increase battery run times. The external battery cabinet (EBC) requires one of the optional EBC cable kits for connection to the UPS. Each optional cable kit contains the power and communication cables required for.

Access the Sol-Ark® Low Voltage Battery Integration Guide with wiring requirements, battery compatibility, safety guidelines, and system configuration steps.

This is a multifunctional inverter, combining functions of inverter, solar charger and battery charger to offer uninterruptible power support with portable size. The NV14



is a fully sealed storage system and has no serviceable for the homeowner. The following shows the basic architecture of the.



How to open the battery cabinet of solar communication



[Battery Communications Integration Guide](#)

Communications Installation and Setup Instructions Connect all Blue Ion cabinets together using their "RS-485 Modbus RTU" ports and standard RJ45 ethernet cable.

[How to Open Parmak Solar Pak Battery Compartment](#)

The battery case lid is attached to the battery case by friction. Remove the battery compartment lid by either pulling straight up on the solar panel or ...

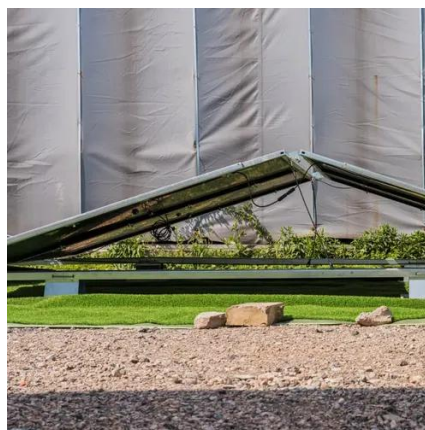


[Connecting External Battery Cabinet](#)

Up to four external battery cabinets may be connected to the SolaHD S5KC UPS to increase battery run times. The external battery cabinet (EBC) requires one of the optional EBC cable ...

[COMMUNICATION CABINETS](#)

How to make battery components for energy storage in communication network cabinets
Battery Energy Storage Systems are made up of battery cells which are combined into battery packs ...



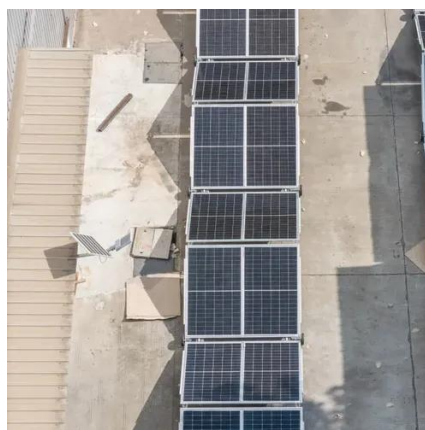
[Connecting SolarEdge Home Battery to SolarEdge Inverter, ...](#)

Connecting DC and Communication Cables For setting up communication between the SolarEdge Home Battery and the inverter, SolarEdge strongly recommends using SolarEdge Home ...



[Galaxy Lithium-ion Battery Cabinet Installation and Operation ...](#)

Start your sales inquiry online and an expert will connect with you. Where to buy? Easily find the nearest Schneider Electric distributor in your location. Find support resources for all your ...



[Battery Room Ventilation and Safety](#)

This course describes the hazards associated with batteries and highlights those safety features that must be taken into consideration when designing, constructing and fitting out a battery ...



[User Manual: Deep Cycle Solar Energy Lithium Ion ...](#)



This document provides information about a deep cycle lithium ion battery system for solar storage and telecommunications from Shandong Sacred ...



[Connecting SolarEdge Energy Bank to SolarEdge Inverter, v 1](#)

Connect battery communication and DC To set up communication between the battery and the inverter, SolarEdge strongly recommends using the SolarEdge Home Network. On the Home ...



[How to remove the battery panel of the energy storage ...](#)

How to remove the battery panel of the energy storage communication network cabinet The Smart Energy Storage Integrated Cabinet is an integrated energy storage solution widely used in ...



[EG4® LIFEPOWER4 48VV2 SERVER RAC](#)

BATTERY SAFETY 4



[User Manual: Deep Cycle Solar Energy Lithium Ion Battery For Solar](#)



This document provides information about a deep cycle lithium ion battery system for solar storage and telecommunications from Shandong Sacred Sun Power Sources Co., LTD. The ...



[USER MANUAL BATTERY CABINET](#)

Before installing batteries into the cabinet, carefully remove all items from inside the cabinet and lay it on its back, preferably on a clean surface or a furniture blanket.

[SolarEdge CSS-OD communication module replacement](#)

Shut down the Battery cabinet Open the battery cabinet door, and keep it open using the support bar located inside the cabinet. Turn off the two red and grey high voltage switches. Turn off the ...



[How to Open Battery Compartment on Led Lights](#) ...

Open the battery compartment? Look no further, as we have a step-by-step guide on how to open battery compartment on LED lights ...

A0001424068



SAVE THESE INSTRUCTIONS for future reference. This manual contains important instructions that must be followed during placement, operation, and maintenance of the unit and its ...



[SolaHD S5KC-External Battery Cabinet Quick Start Guide](#)

View and Download SolaHD S5KC-External Battery Cabinet instruction manual online.



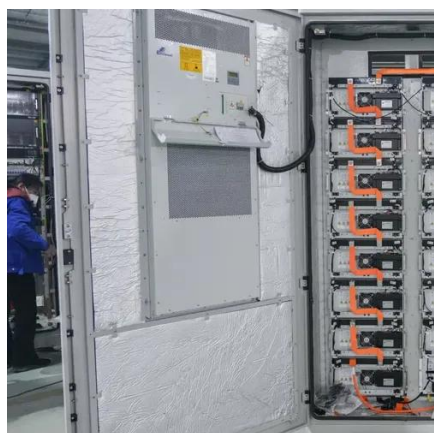
[Sol-Ark Low Voltage Battery Integration Guide](#)

Access the Sol-Ark® Low Voltage Battery Integration Guide with wiring requirements, battery compatibility, safety guidelines, and system configuration steps.



[EG4 \(48V/100AH\) LL Battery Manual](#)

It contains information about the correct installation, operation, and maintenance of your purchase. Thank you for your purchase of an EG4-LL battery from Signature Solar. Welcome ...



[EG4®-LL 48V 100AH Rack-Mounted Batter](#)



4.2 Overview of System Components The battery module is made up of sixteen "AAA" grade cells, a BMS, a housing, a breaker, and wire. It can be installed in a standard 19-inch cabinet ...





Contact Us

For inquiries, pricing, or partnerships:

<https://www.zawojcsolina.pl>

Phone: +48 22 173 6647

Email: info@zawojcsolina.pl

Scan QR code for WhatsApp.

