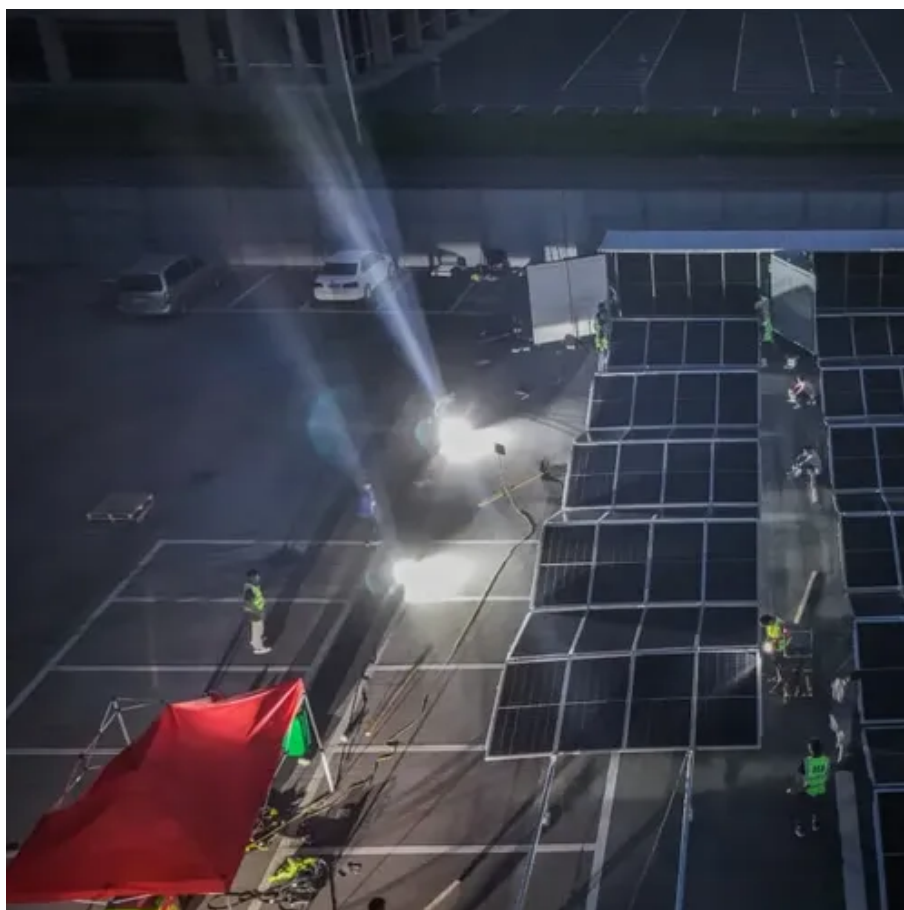




How to test the battery voltage in the battery cabinet





Overview

Connect your multimeter's red lead to the battery's positive terminal and the black lead to the negative terminal. Read the multimeter; a healthy battery should show around 12.6 volts.

Connect your multimeter's red lead to the battery's positive terminal and the black lead to the negative terminal. Read the multimeter; a healthy battery should show around 12.6 volts.

Measuring battery voltage is a fast, essential way to determine the state of charge. Checking voltage is especially important before diagnosing deeper electrical problems. Whether you're verifying cranking performance or alternator output, the Fluke 88V multimeter gives you accurate and reliable.

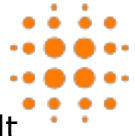
The multimeter is a versatile electronic measuring device that allows for the non-destructive testing of battery condition by reading open-circuit voltage. This measurement, taken when the battery is not connected to a load, serves as a direct indicator of its state of charge and overall.

In this guide, we'll walk you through the steps to test any battery with a multimeter, helping you achieve accurate results and maintain the reliability of your devices. To ensure accurate and effective battery testing, follow these initial steps: Determine the battery type (e.g., AA, AAA).

Master the art of testing batteries with a multimeter for precise results and discover essential tips that could prolong your battery life! To test batteries with a multimeter, start by setting the multimeter to DC voltage mode. For a 12V battery, a reading of around 12.6V indicates it's fully.

To check battery voltage accurately, you'll need a multimeter. Start by switching off all electrical components for safety and locate the battery. Connect your multimeter's red lead to the battery's positive terminal and the black lead to the negative terminal. Read the multimeter; a healthy.

To check battery cell voltage, you use a digital multimeter to measure the voltage across each individual cell terminal. This simple process reveals the health and charge status of each cell, helping you identify underperforming or failing cells



before they cause bigger issues. Whether you're. How do you test a 12 volt battery?

First, set your multimeter to the DC voltage mode, selecting a range of 15-20V for accurate readings. To measure voltage, connect the black probe to the negative terminal and the red probe to the positive terminal of the battery. For a 12V battery, a voltage reading around 12.6V indicates it's fully charged.

How do you test a battery?

Always check voltage before load testing a battery. Use MIN/MAX to catch voltage drops when starting the engine. Combine this test with ripple voltage and voltage drop tests for a complete system diagnosis. On maintenance-accessible batteries, also check electrolyte level and specific gravity if voltage is low.

How do you measure battery voltage with a multimeter?

Measuring voltage with a multimeter is a straightforward process that can help you assess your battery's health. First, set your multimeter to the DC voltage mode, selecting a range of 15-20V for accurate readings. To measure voltage, connect the black probe to the negative terminal and the red probe to the positive terminal of the battery.

Do you need a multimeter to test a battery?

Testing a battery with a multimeter is essential to ensure its optimal performance and longevity. Whether troubleshooting electronic devices or diagnosing car ignition issues, a multimeter can accurately measure a battery's voltage and current. This guide outlines the steps to identify faulty batteries and ensure they are functioning correctly.



How to test the battery voltage in the battery cabinet

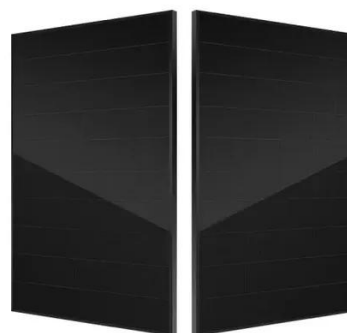


[How to Check Battery Voltage: A Step-by-Step ...](#)

Learn how to check your car battery voltage with a simple multimeter test. Find out what voltage levels mean, prevent breakdowns, and keep your ...

[How to Test Battery Voltage with Multimeter? Easy Step-by-Step ...](#)

This guide has provided a comprehensive overview of how to test battery voltage with a multimeter. Key takeaways include the importance of safety precautions, selecting the ...



[How to Measure Battery Voltage with a Multimeter . Fluke](#)

Follow this step-by-step guide to measure battery voltage with a multimeter. Measuring battery voltage is a fast, essential way to determine the state of charge.

[How to Check Battery Cell Voltage](#)

Learn how to check battery cell voltage safely and accurately with expert-approved steps and the best tools.



[Revolutionize Your Electrical Game: How to Check Voltage Meter ...](#)

2. Test with a Known Source: Connect the meter's leads to a reliable source of known voltage, such as a battery or a power supply. Observe the meter's reading and ...

[How To Test A Car Battery With A Klein Multimeter? Easy Steps](#)

This electrical energy is measured in volts (V), and a standard 12-volt car battery provides the necessary power to start your engine and run various electrical components. The ...



[How to Test Batteries With a Multimeter: DIY Guide for Accuracy!](#)

To measure voltage, connect the black probe to the negative terminal and the red probe to the positive terminal of the battery. For a 12V battery, a voltage reading around 12.6V ...

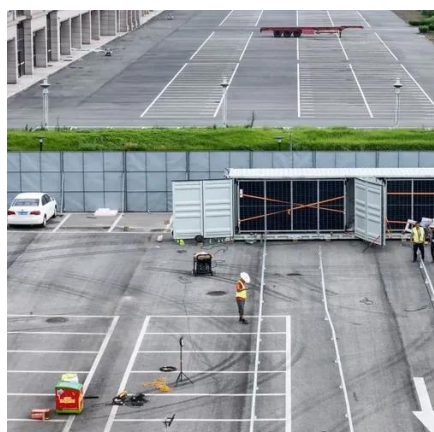
12.8V 200Ah



[How to Test the Health of Your Low Voltage Cabinet Batteries](#)



The PROG 1 Pushbutton Delta V test is the best way to check your battery's health. This test momentarily places a 1 ohm short across the battery circuit. The change in battery voltage ...



[How to Check Battery Voltage Correctly](#)

Learn how to check battery voltage the right way. This guide covers tools, techniques, and tips for safe and accurate measurements.

[How to Test a Battery With a Multimeter](#)

Use a multimeter to quickly and safely test battery voltage. Learn to interpret the results to diagnose charge level and overall battery health.



[Battery Test Using a Multimeter - How to Check Battery Voltage ...](#)

This test allows you to check the voltage, current, and resistance values of the battery, providing valuable information about its overall health and performance. Battery Check ...



[Learn How to Test a Battery Using a Multimeter](#)



Disconnect the battery from the circuit. Rotate the knob of the multimeter and set it to 15-20V DC voltage (a battery generates DC power). Always set the dial to a higher range ...

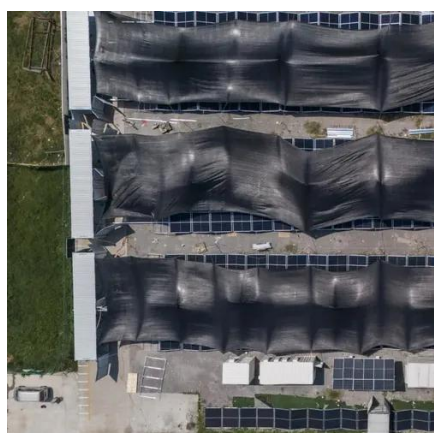


[Learn How to Test a Battery Using a Multimeter](#)

Disconnect the battery from the circuit. Rotate the knob of the multimeter and set it to 15-20V DC voltage (a battery generates DC ...

[How to Test the Health of an AGM Battery](#)

The most definitive assessment of an AGM battery's health is a dynamic test that measures its ability to sustain voltage while under a heavy load. This process reveals the ...



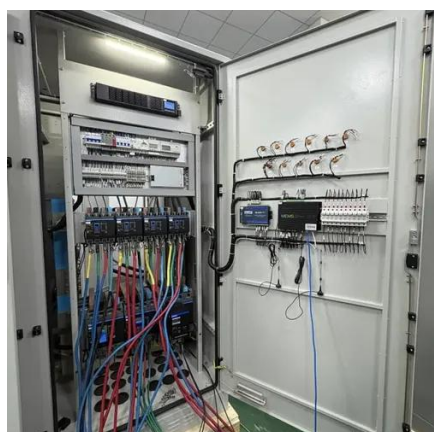
[How to Check Battery Voltage Correctly](#)

Learn how to check battery voltage the right way. This guide covers tools, techniques, and tips for safe and accurate measurements.

[How to Test Battery Voltage with Multimeter? Easy Step-by-Step ...](#)



A malfunctioning battery can lead to costly repairs, frustrating downtime, and even safety hazards. This comprehensive guide delves into the intricacies of testing battery voltage ...



[How to Test Batteries to See If They're Fresh or Dead](#)

Use the drop test to check if the batteries are old or new. A drop test won't tell you if an alkaline battery is dead, but it can help you distinguish new batteries from old ones. That ...

[Ultimate Guide: How to Test Any Battery with a Multimeter for ...](#)

In this guide, we'll walk you through the steps to test any battery with a multimeter, helping you achieve accurate results and maintain the reliability of your devices.



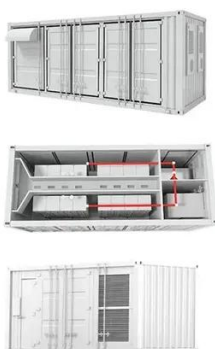
[Testing a Battery Without a Tester: A Comprehensive Guide](#)

There are several methods to test a battery without a tester, including the voltage drop test, the load test, and the cold cranking amps (CCA) test. The voltage drop test involves ...

[Ultimate Guide: How to Test Any Battery with a ...](#)



In this guide, we'll walk you through the steps to test any battery with a multimeter, helping you achieve accurate results and maintain the ...



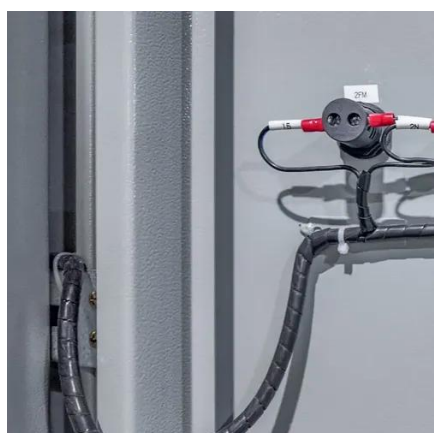
[How To Check Battery Voltage With A Multimeter?](#)

Checking battery voltage with a multimeter involves setting the device to measure DC voltage, placing the red probe on the battery's positive terminal and the black probe on the ...

[Accurately measuring direct current \(DC\) voltage](#)

...

Introduction Accurately measuring direct current (DC) voltage is a fundamental skill for anyone working with batteries and electronic ...



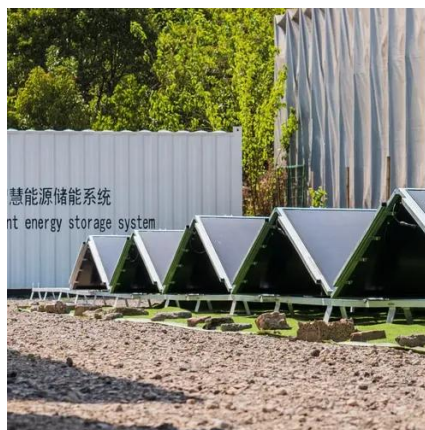
[How to Test Voltage with a Multimeter \(Digital or Analog\)](#)

Many modern multimeters have an autorange feature, meaning they set the proper range once you begin the test. Check the maximum voltage for your multimeter--if you ...

[TELECOMMUNICATIONS- VRLA BATTERY ...](#)



This standardized maintenance and test program when implemented and followed provides the most economical and efficient use of manpower to optimize VRLA battery life, prevent ...



[How to Measure Battery with Multimeter? A Step-by-Step Guide](#)

Think of voltage as the electrical pressure. A battery's voltage is a measure of the potential energy it can deliver. The higher the voltage, the greater the potential energy. Current ...

[How to test battery with volt meter, checking rechargeable batteries](#)

In this comprehensive guide, we break down the simple steps to effectively assess your battery's voltage and health. Whether you're troubleshooting a dead car battery or checking





Contact Us

For inquiries, pricing, or partnerships:

<https://www.zawojcsolina.pl>

Phone: +48 22 173 6647

Email: info@zawojcsolina.pl

Scan QR code for WhatsApp.

