



Instructions for Use of 60kWh Communication Power Supply Cabinet for Streetlights





Overview

Can a street lighting system be installed on a distribution pole?

trian activities (car doors, wheelchair ramps, etc.).The Street Lighting System can be installed on distribution poles when the distribution system is either overhead or semi-underground. Adequate spacing shall be considered for the LED luminaire, and the r.

What is the Itage drop allowed in street lighting systems?

Itage drop allowed in Street Lighting Systems is 3%. The length of circuits, transformers capacity, luminaire voltage, conductor gauge, and luminaire with cross-linked polyethylene insulation (XLPE) with high heat resista.

Can a street lighting system be transferred to PREPA?

s. 2.1 Street Lighting Systems Transferred to PREPALUMA (on behalf of PREPA) will only accept the transfer of Street Lighting Systems to PREPA that are designed, specified, and built according to th requirements and standards set forth in this Manual. In addition, to accept the transfer to.

Where should traffic signal cabinets be located?

Location: Traffic signal cabinets should be located as far as practical off the edge of the roadway and in the same intersection quadrant as the power source whenever possible. Traffic signal cabinets shall not be placed within the pedestrian walkway portion of a sidewalk if it obstructs ADA pathway and protection requirements.



Instructions for Use of 60kWh Communication Power Supply Cabinet



[CHAPTER 6 TRAFFIC SIGNAL DESIGN - CABINETS AND ...](#)

... based on the traffic signal plans or associated bid documents. The traffic signal power supply is an electrical device in the cabinet that converts AC to correct DC voltage for various devices in ...

[Load calculations for street & road lighting .. Electrician Talk](#)

I have 200kVA, 3-phase 4 wire hermetically sealed power transformer with voltage rating of 13.8kV/400/220/110V. I want to use it in road & street lighting application. My load ...



[Commercial& Industry Smart Inverter Solution](#)

In some countries/regions, the PV power feed into the utility grid is limited. Set peak limit power, charge the battery using the surplus power when the PV power exceeds the peak limit power.



[CHAPTER 6 TRAFFIC SIGNAL DESIGN - CABINETS AND ...](#)

Interconnect/Communications: Where installed in a system, the traffic signal cabinet shall have facilities for the appropriate communications.



[Sol-Ark L3 HVR-60KWH-60K: 480V Outdoor ...](#)

The Sol-Ark L3 HVR-60KWH-60K is an outdoor energy storage solution designed for large commercial and industrial applications. This powerful ...



60kWh HV System

Designed for retail, offices, and small factories, LYTH packs can be stacked or integrated into standard energy cabinets. Combined with EMS, they help reduce electricity bills through peak ...



[SUNWODA CISSS SERIES PRODUCT/MAINTENANCE ...](#)

It can be used to adjust peak reclamation, spontaneous use, demand management, separation of electricity reserves, optical storage and other application scenarios.



[CommScope , now meets next](#)



Explore CommScope's street cabinet solutions for cross connection, offering reliable and efficient network infrastructure options.



[Power Supplies Used in Traffic Signal Control and Lighting](#)

Traffic Signal power supplies supply power to traffic signal cabinets while adhering to local utility company requirements. The traffic signal power supply is an electrical device in ...

[Power Supply Cabinets](#)

Raycap Power Supply Cabinets Systems can accommodate Power Supply Unit (PSU), battery bank, AC and DC distribution units, and sensors.



[Telecommunication Street cabinet 1.3m Power ...](#)

Buy Online: Telecommunication Street cabinet 1.3m Power Battery Cabinet With Ventilation Fan SNMP Monitoring. This system uses 2 sets AC air ...



[Power Supply Cabinet Manufacturer, DOHO ...](#)



Indoor Power Supply Cabinet Our power supply Cabinets are designed to protect your critical equipment from power surges and voltage spikes from ...



[Customer Reference Specification 6-10-165](#)

The maximum size pole-mounted fused distribution cabinet allowed is 22" wide x 16 1/2" deep x 30" high. All cabinets or disconnecting equipment must be mounted using externally ...

...

MEAN WELL system power supply can be matched with MEAN WELL's self-made monitor CMU2C to achieve control and monitoring functions Please refer to the CMU2C datasheet and ...



[Functions of a Street Light Control Cabinet](#)

A modern Street Light Control Cabinet is no longer just a power distribution box--it is an intelligent system that improves energy efficiency, safety, and maintenance while ...



[A Simple Circuit Diagram for Street Lights](#)



5. Power supply: The power supply in a street light circuit diagram is responsible for converting the main supply voltage into the appropriate voltage required by the light source. It ensures a ...



STREET LIGHTING SYSTEM DESIGN AND ...

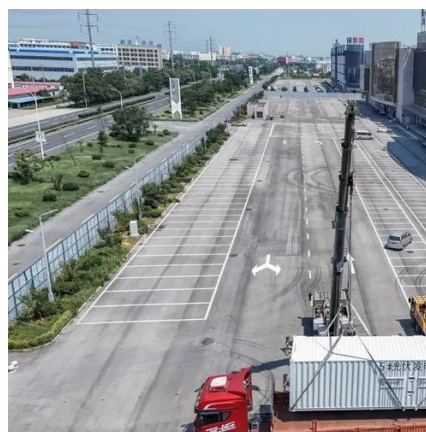
All equipment and infrastructure used to provide power to the Street Lighting System shall be in accordance with the requirements of the electrical distribution standards established or ...



1075KWHH ESS

INSTALLATION GUIDE

Users are expressly advised to follow the instructions and guidelines outlined in the documentation accompanying the product. Sol-Ark shall not be liable for any damages or ...



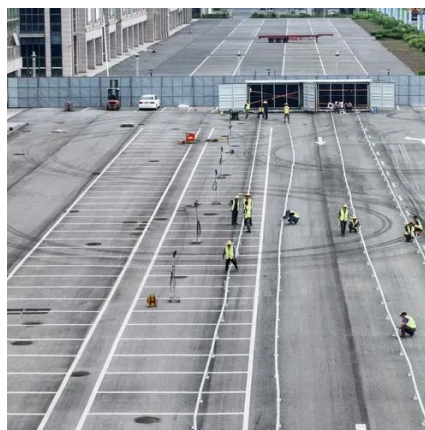
GE-FH60 , 61 kWh High-Voltage LiFePO4 Battery Cabinet - SES

DEYE C& I GE-FH60: 60+ kWh LiFePO4 cabinet, 614 V nominal, IP55, UL 9540A safety, expandable to 3.6 MWh. Compatible with Sol-Ark 30 kW & 60 kW inverters.

LED Power Supply 60-Watt Standard Driver 24 ...



Bring a rich and luxurious look to your home with the help of this affordable Armacost Lighting Standard Driver DC LED Power Supply ...



Street Light Manual

Please consult with an MTE engineer or representative before purchasing material or beginning construction on any streetlight installation. MTE will provide information on approved fixtures, ...



[L3 HVR User Manual \(EN\)](#)

Sol-Ark assumes no responsibility or liability for any damages, property loss, personal injury, or any adverse consequences resulting from improper use and installation of the product or the ...



[Lion Energy 60 kW/101 kWh POWERsave Cabinet . Global Power Supply](#)

All-in-one cabinet - battery, inverter, cooling, and EMS 3 main configurations (inverter size): 30kW, 60kW, and 90kW Lithium Iron Phosphate (LiFePO4) for long cycle life and thermal ...





Contact Us

For inquiries, pricing, or partnerships:

<https://www.zawojcsolina.pl>

Phone: +48 22 173 6647

Email: info@zawojcsolina.pl

Scan QR code for WhatsApp.

