



Instructions for Use of Lithium Battery Cabinet with AC DC Integration





Overview

This installation manual provides instructions and recommendations for installing and commissioning the Generac PWRcell® Battery.

This installation manual provides instructions and recommendations for installing and commissioning the Generac PWRcell® Battery.

With 10, 13, 16, or 17 Battery Modules Installation and Operation LIBSESMG10IEC, LIBSESMG13IEC, LIBSESMG16IEC, LIBSESMG17IEC LIBSESMG10UL, LIBSESMG13UL, LIBSESMG16UL, LIBSESMG17UL Latest updates are available on the Schneider Electric website 12/2024 Legal Information The information.

Quickly and easily find the right products and accessories for your applications. Start your sales inquiry online and an expert will connect with you. Where to buy?

Easily find the nearest Schneider Electric distributor in your location. Find support resources for all your needs, in one place. I'd.

This installation manual provides instructions and recommendations for installing and commissioning the Generac PWRcell® Battery. The PWRcell Battery is designed to house compatible lithium ion battery modules, and connects directly to the PWRcell Inverter and other REbus™ compatible components of.

The addition of this symbol to a “Danger” or “Warning” safety message indicates that an electrical hazard exists which will result in personal injury if the instructions are not followed. This is the safety alert symbol. It is used to alert you to potential personal injury hazards. Obey all safety.

Upon conclusion of an asecos service and maintenance agreement(PREMIUM tari), you will get a warranty extension for up to 10 years for your ION-LINE safety storage cabinet. you have made a decisive investment in safety for your company by purchasing this asecos safety storage cabinet. You now own.

The addition of this symbol to a “Danger” or “Warning” safety message indicates that an electrical hazard exists which will result in personal injury if the instructions are not followed. This is the safety alert symbol. It is used to alert you to potential personal injury hazards. Obey all safety.



Instructions for Use of Lithium Battery Cabinet with AC DC Integration



[Galaxy Lithium-ion Battery Cabinet](#)

Important Safety Instructions -- SAVE THESE INSTRUCTIONS. Read these instructions carefully and look at the equipment to become familiar with it before trying to install, operate, service or ...

[Schneider Electric LIBSESMG10IEC Galaxy Lithium-ion ...](#)

Push the third battery cabinet into position, align with the seismic anchoring (if any), level the battery cabinet, and interconnect with the other battery cabinets as described in step 2, step 3, ...



Galaxy Lithium-ion

For 11+ battery cabinets, at least two SMPS AC/DC converters are required. Split the number of battery cabinets as evenly as possible across the number of SMPS AC/DC converters.

[Galaxy Lithium-ion Battery Cabinet](#)

Read all instructions in the installation manual before installing or working on this product. Failure to follow these instructions will result in death or serious injury. Do not install the product until ...



[EN_User-manual_ION-LINE_BatteryCharge_BatteryChargeP...](#)

Make use of this option so that trained rescue personnel can be quickly alerted and be on-site in a very short time and, following an initial assessment of the situation, immediately initiate further ...



[Integrated Energy Storage Cabinet](#)

The SafeCubeA100A50PT Integrated Energy Storage Cabinet is equipped with 3.2V/100Ah lithium iron phosphate batteries, supporting a maximum ...



UPS Battery Cabinets

BC 2 300X/500 Battery Conditioning (pgs. 35-36) in ZincFive's BC 2 Series UPS Battery Cabinet Service Manual for the recommended UPS LVCO and expected power levels in the customer ...



[Galaxy Lithium-ion Battery Cabinet Manuals](#)



Galaxy Lithium-ion Battery Cabinet With 10, 13, 16, or 17 Battery Modules - Installation and Operation Galaxy Lithium-ion Battery Cabinet SMPS AC/DC Converter - Installation

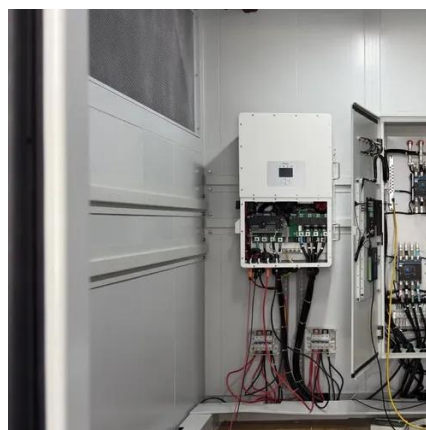


[Prepare Battery Cabinet 2-10 for Installation](#)

Top View of the Battery Cabinet Disconnect the internal cable 0W13501 from the P- busbar. Reinstall the nut on the P- busbar. Remove the cable lugs from the two internal cables ...

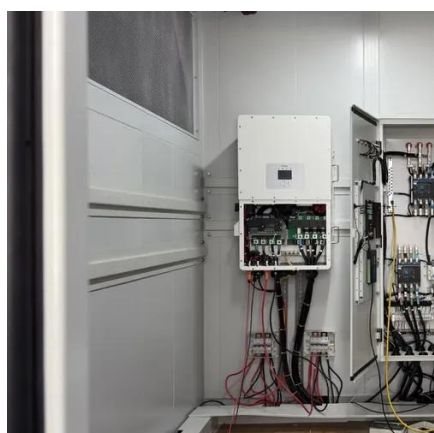
[Galaxy Lithium-ion Battery Cabinet](#)

Read all instructions in the installation manual before installing or working on this product. Failure to follow these instructions will result in death or serious injury. Do not install the product until ...



[Installation and Owner's Manual](#)

The companion document to this installation manual is the Generac PWRcell Battery Owner's Manual. See the Generac PWRcell Battery Owner's Manual for complete information on user ...



[Installation and Owner's Manual](#)



This installation manual provides instructions and recommendations for installing and commissioning the Generac PWRcell® Battery. The PWRcell Battery is designed to house ...



[Galaxy Lithium-ion Battery Cabinet](#)

Read these instructions carefully and look at the equipment to become familiar with it before trying to install, operate, service or maintain it. The following safety messages may appear ...

USER MANUAL

Dear customer, Thank you very much for purchasing a safety storage cabinet from our company, with which you have made a decisive investment in the safety within your company. Our safety ...



[Integrated Energy Storage Cabinet](#)

The SafeCubeA100A50PT Integrated Energy Storage Cabinet is equipped with 3.2V/100Ah lithium iron phosphate batteries, supporting a maximum energy storage capacity of 102kWh. ...

[Galaxy Lithium-ion Battery Cabinet SMPS AC/DC Converter ...](#)



Find support resources for all your needs, in one place.



[Galaxy Lithium-ion Battery Cabinet SMPS AC/DC Converter - ...](#)

Install the SMPS AC/DC Converter on Battery Cabinet 1 Prepare Battery Cabinet 2-10 for Installation Connect the Cables between the SMPS AC/DC Converter and the Battery ...



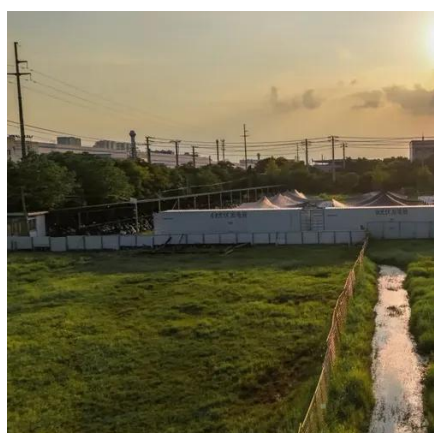
[Galaxy Lithium-ion Battery Cabinet With 10, 13, 16, or 17 ...](#)

Read these instructions carefully and look at the equipment to become familiar with it before trying to install, operate, service or maintain it. The following safety messages may appear ...



[Important Safety Instructions -- SAVE THESE INSTRUCTIONS](#)

Read these instructions carefully and look at the equipment to become familiar with it before trying to install, operate, service or maintain it. The following safety messages may appear ...



USER MANUAL



Our safety storage cabinets make the storage of lithium-ion batteries at the workplace safe and convenient for you. Please read these operating instructions very carefully. Get to know the ...



[Installation Procedure](#)

Connect the Cables between the SMPS AC/DC Converter and the Battery Cabinets. Follow the battery cabinet installation manual to complete the rest of the battery cabinet installation.



[ASECOS ION-CHARGE-90 USER MANUAL Pdf Download](#)

View and Download asecos ION-CHARGE-90 user manual online. ION-CHARGE-90 battery charger pdf manual download. Also for: Ion-charge pro-90, lo90.195.060.k9.wdc, lo90



Lifeguard:

FIRST AID FIRE HOSE REEL ?????? ??? ?????? ?????
-- ??????????®, ??????????, ?????? & ?????????? ??????
...





Contact Us

For inquiries, pricing, or partnerships:

<https://www.zawojcsolina.pl>

Phone: +48 22 173 6647

Email: info@zawojcsolina.pl

Scan QR code for WhatsApp.

