



# Is the cabinet tower a base station





## Overview

---

A is a network of handheld (cell phones) in which each phone communicates with the by through a local antenna at a cellular base station (cell site). The coverage area in which service is provided is divided into a mosaic of small geographical areas called "cells", each served by a separate low power multichannel and antenna at a base station. All the cell phones within a cell communicate with the system thr.

A typical communication base station combines a cabinet and a pole. The cabinet houses critical components like main base station equipment, transmission equipment, power supply systems, and battery banks.

A typical communication base station combines a cabinet and a pole. The cabinet houses critical components like main base station equipment, transmission equipment, power supply systems, and battery banks.

A cell site, cell tower, or cellular base station is a cellular-enabled mobile device site where antennae and electronic communications equipment are placed - typically on a radio mast, tower, or other raised structure - to create a cell (or adjacent cells) in a cellular network. A mobile base.

A cell site, cell phone tower, cell base tower, or cellular base station is a cellular -enabled mobile device site where antennas and electronic communications equipment are placed (typically on a radio mast, tower, or other raised structure) to create a cell, or adjacent cells, in a cellular.

A typical communication base station combines a cabinet and a pole. The cabinet houses critical components like main base station equipment, transmission equipment, power supply systems, and battery banks. Meanwhile, the pole serves as a mounting point for antennas, Remote Radio Units (RRUs), and.

Understand the major elements within a cellphone or cellular network base station, what each element does and how the technology is evolving to provide more flexible operation & better performance. The base station is the most visible element of a mobile or cellular telecommunications network.

In technical terms, the cell towers are called radio base stations or base stations. The radio units in the base station emit mobile signals (radio waves) at various frequencies that our mobile phones and other SIM-enabled devices can pick up to



get us connected. Cell towers or radio base stations.

A base station represents an access point for a wireless device to communicate within its coverage area. It usually connects the device to other networks or devices through a dedicated high bandwidth wire or fiber optic connection. Base stations typically have a transceiver, capable of sending and receiving. What is a cellular base station?

A cell site, cell phone tower, cell base tower, or cellular base station is a cellular-enabled mobile device site where antennas and electronic communications equipment are placed (typically on a radio mast, tower, or other raised structure) to create a cell, or adjacent cells, in a cellular network.

What is a tower base?

Tower Base: Ensures structural integrity and balance. These components are the "secret codes" for effective communication with industry professionals. "The stone from other hills may serve to polish the jade of this one." For those involved in wireless surveys and design, the final goal is the construction drawing that guides engineering efforts.

What is the difference between base station and antenna?

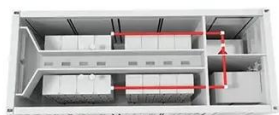
Base stations transmit signals from one cell site to the next. Antennas are typically placed high above the ground (on towers or other tall structures) to transmit and receive signals between cell sites. Any device that relies upon radio-waves to transmit and/or receive data, emits radiofrequency (RF) energy.

What are the elements of a base station?

The main elements within the base station are the following entities: Antenna system: The antenna system is the most obvious element of the base station and the antennas on towers and buildings tend to have a very distinctive shape.



## Is the cabinet tower a base station



### [Shelters/Cabinets/Mobile Towers](#)

Walk in or step in cabinets are also available and provide a low profile design and high storage capabilities for PCS, cellular, fiber optics and Wi-Fi applications. They are also easier to permit ...

### [Interior of a cell phone tower's base station cabinet \[OC\]...](#)

Jumpers exit at the bottom right. Immediately outside the cabinet, the jumpers connect to 1-5/8" coaxial cable for the run to the antennas on the tower. The whole case is positively ...



### [Shelters/Cabinets/Mobile Towers](#)

Because backhaul is not always through microwave applications with many carriers, but through T1 leased lines, the cabinet size has shrunk because ...

### [Cell Phone Towers -- EITC](#)

A cell site, cell tower, or cellular base station is a cellular-enabled mobile device site where antennae and electronic communications equipment are placed - typically on a ...



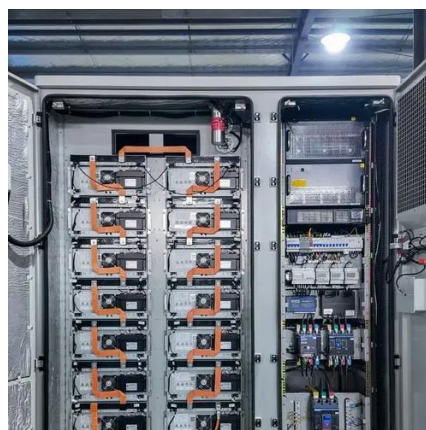
### What are the base station energy storage ...

Energy storage cabinets serve as an integral element within the telecommunications ecosystem. Their primary role lies in storing ...



### Cellular Base Stations

They need to be mounted on a tower to overcome obstacles, such as trees, hills, or tall buildings, that stand between the base station ...



### Cell sites and cell towers in a mobile cellular network

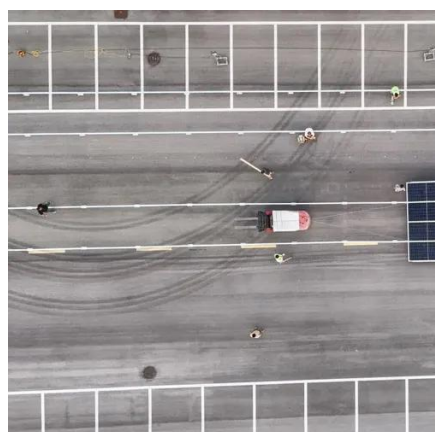
In technical terms, the cell towers are called radio base stations or base stations. The radio units in the base station emit mobile signals (radio waves) at various frequencies ...



### Shelters/Cabinets/Mobile Towers



Walk in or step in cabinets are also available and provide a low profile design and high storage capabilities for PCS, cellular, fiber optics and Wi-Fi ...



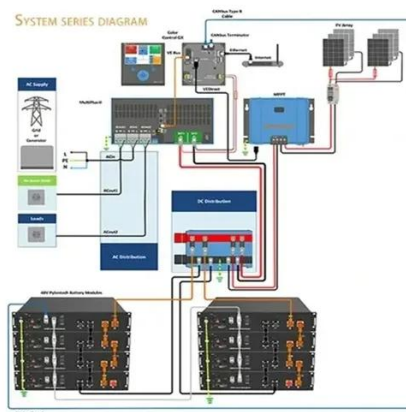
### Cell site

Summary Overview Operation Temporary sites Employment Spy agency setup Off-grid systems Camouflage

A cellular network is a network of handheld mobile phones (cell phones) in which each phone communicates with the telephone network by radio waves through a local antenna at a cellular base station (cell site). The coverage area in which service is provided is divided into a mosaic of small geographical areas called "cells", each served by a separate low power multichannel transceiver and antenna at a base station. All the cell phones within a cell communicate with the system thr...

### [Complete Guide to 5G Base Station Construction, Key Steps, ...](#)

A typical communication base station combines a cabinet and a pole. The cabinet houses critical components like main base station equipment, transmission equipment, power ...



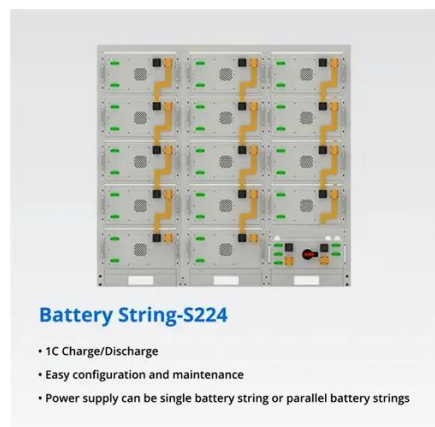
### [14U Outdoor Base Station Cabinet](#)

The stations radio cabinets are completed with a polyester powder coating and come equipped to be placed in 19" racks. Telhua's Base Station Cabinet not only protects your equipment but ...



### [What are the base station energy storage cabinets? , NenPower](#)

Energy storage cabinets serve as an integral element within the telecommunications ecosystem. Their primary role lies in storing electric energy for backup ...



### [Understand Cellphone Basestation Technology » Electronics Notes](#)

The baseband unit could be located in a cabinet at the base of the antenna tower, or increasingly it, or elements of it could be located remotely because fronthaul (the link between the ...

### [Base Stations and Energy Levels](#)

Base stations are often referred to as towers or cell sites, but they are literally the equipment that houses the radio transmitters and receivers that carry the signal to wireless ...



### [Process of Installing a Base Transceiver Station ...](#)

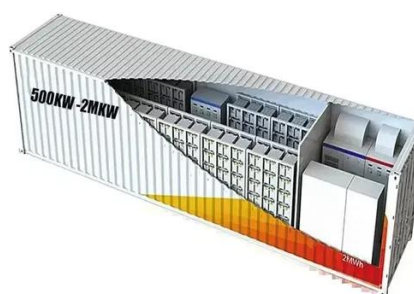


Installing a Base Transceiver Station (BTS) is a critical step in building mobile communication networks. Here's a step-by-step guide to ...



## Base station

A control station is a base station used in a system with a repeater where the base station is used to communicate through the repeater. A temporary ...

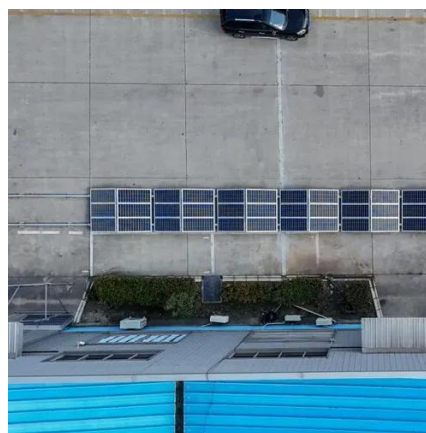


## [Base Stations and Energy Levels](#)

Base stations are often referred to as towers or cell sites, but they are literally the equipment that houses the radio transmitters and ...

## [Breaking Down Base Stations - A Guide to ...](#)

A lattice or self-supporting tower uses a square or triangular base and a triangular grid configuration of steel beams to offer improved ...



## [What is Telecommunication Base Station , China Hop](#)



Most people think that the towering iron tower is the entirety of the base station, but in fact, it is just the tower and antenna, just a component of ...

### [A Field Guide To The North American Communications Tower](#)

Technically speaking, they are called Base Transmitter Stations (BTS). You might see 'cell site' and 'cell tower' used interchangeably, but these terms are not synonymous. A ...



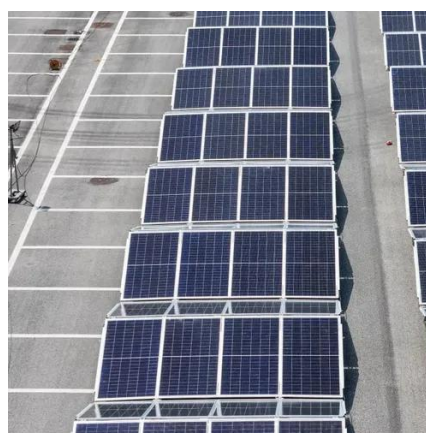
### [Understand Cellphone Basestation Technology » Electronics Notes](#)

Even though the technology behind the antennas themselves is sophisticated, there is considerably more to a mobile phone base station than just the antennas and the tower.



### **CN220402116U**

The utility model relates to the technical field of combined cabinets and discloses a combined cabinet for an iron tower base station, which comprises a base, wherein clamping plates are ...



### **Base Stations**



The present-day tele-space is incomplete without the base stations as these constitute an important part of the modern-day scheme of wireless communications. They are ...

### [Understand Cellphone Basestation Technology » ...](#)

Even though the technology behind the antennas themselves is sophisticated, there is considerably more to a mobile phone base station ...



### **Cell site**

Typically, a cell tower is located at the edge of one or more cells and covers multiple cells using directional antennas. A common geometry is to locate the cell site at the intersection of three ...

### [Base Stations and Cell Towers: The Pillars of Mobile Connectivity](#)

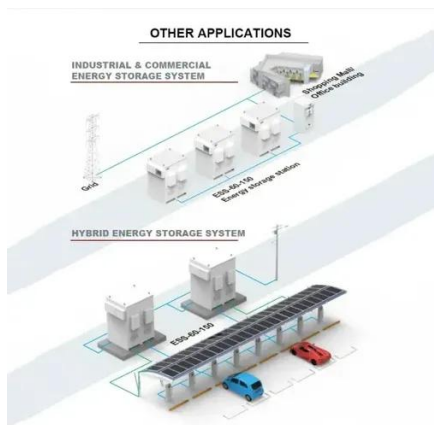
Base stations and cell towers are critical components of cellular communication systems, serving as the infrastructure that supports seamless mobile connectivity. These ...



### **Base Stations**



The present-day tele-space is incomplete without the base stations as these constitute an important part of the modern-day scheme ...



### [Interior of a cell phone tower's base station cabinet ...](#)

Jumpers exit at the bottom right. Immediately outside the cabinet, the jumpers connect to 1-5/8" coaxial cable for the run to the antennas on the ...



### [What is a base station and how are 4G/5G base stations different?](#)

Base station is a stationary trans-receiver that serves as the primary hub for connectivity of wireless device communication.

### [Complete Guide to 5G Base Station Construction](#)

A typical communication base station combines a cabinet and a pole. The cabinet houses critical components like main base station ...





## Contact Us

---

For inquiries, pricing, or partnerships:

<https://www.zawojcsolina.pl>

Phone: +48 22 173 6647

Email: [info@zawojcsolina.pl](mailto:info@zawojcsolina.pl)

Scan QR code for WhatsApp.

