



# London solar power plant system





## London solar power plant system

---

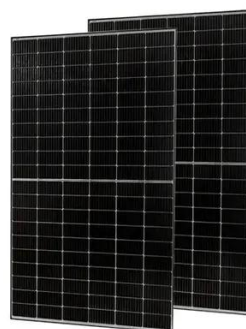


### [London's BIPV Innovations .. Transforming Architecture into Power Plants](#)

As cities worldwide strive to meet decarbonization goals, London's pioneering projects demonstrate how BIPV can address energy demands while enhancing urban ...

### [What is a power plant controller \(PPC\)? . Emerson US](#)

The PPC is designed for real-time control and optimization of the power generation process. It ensures that the solar plant operates efficiently while adhering to grid requirements. Key ...



### [Solar power in the United Kingdom](#)

Solar power has a growing role in electricity production in the United Kingdom, contributing around 5% of the UK's annual power generation in 2024. [1] As of 2025, on sunny days, it ...

### [World's largest offshore solar farm could meet power needs of 2.6](#)

The world's largest 1 GW offshore solar farm located off the coast of Dongying, Shandong Province, China is now connected to the grid.



### [London Underground: TfL plans solar farms to help power the ...](#)

Transport for London (TfL) is planning to set up solar farms to help power its Underground network. The transport body has asked for potential "delivery partners" to apply ...

We would like to show you a description here but the site won't allow us.



### [Solar Power Plant Construction and Working: A Comprehensive Guide](#)

In this article, we will explore the construction and working of solar power plants, focusing on their critical ...



## **Power station**



A power station, also referred to as a power plant and sometimes generating station or generating plant, is an industrial facility for the generation of ...

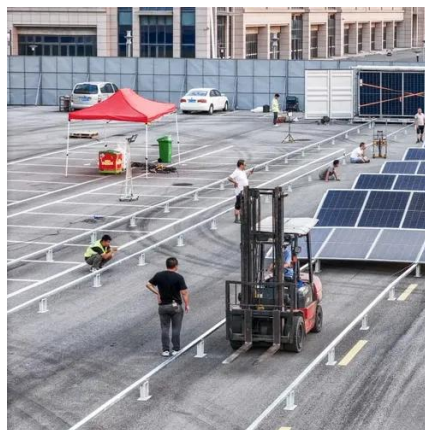


### [UK Takes a Massive Step Now Toward Greener Urban Transit in ...](#)

In an ambitious move towards the environment taken by the UK, Transport for London (TfL) has announced an unprecedented solar power initiative to power London's iconic ...

### [London Inches Closer to Running Transit System Entirely on Renewable Power](#)

Under a new agreement, London will source enough solar power to run its light railway and tram networks entirely on renewable energy. Transport for London has signed a ...



### [Renewable Energy Revolution: How a Solar Facility Will Power ...](#)

Discover how a groundbreaking solar facility is revolutionizing the London Underground by providing clean energy for its trains. Explore the impact of renewable energy ...

### [Solar Power Plants: Types, Components and Working Principles](#)



Solar power plants are systems that use solar energy to generate electricity. They can be classified into two main types: photovoltaic (PV) power plants and concentrated solar ...



### [Solar plant to power London Underground trains](#)

UK: Transport for London has awarded EDF Renewables UK a 15-year power purchase agreement to provide solar energy to cover part of the London Underground's ...

### [Solar farms to power London Underground](#)

Transport for London (TfL) has appointed EDF Renewables UK to generate and deliver green electricity for the London Underground network (aka the Tube), via a new solar ...



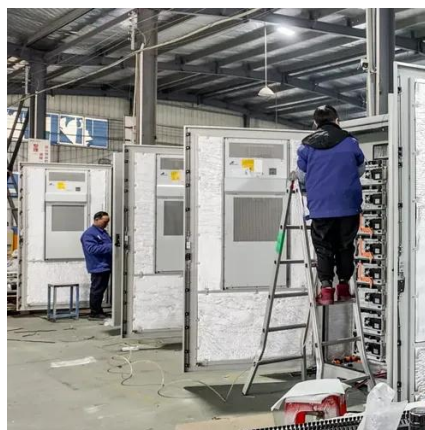
### [POWER PLANT PROFILE LONDON ROAD SOLAR FARM UK](#)

This paper presents a review of thermal energy storage system design methodologies and the factors to be considered at different hierarchical levels for concentrating solar power (CSP) ...

### [Charlie5DH/Solar-Power-Datasets-and-Resources](#)



Resources about solar power systems for data science - Charlie5DH/Solar-Power-Datasets-and-Resources



### [Solar Power Plants: Types, Components and ...](#)

Solar power plants are systems that use solar energy to generate electricity. They can be classified into two main types: ...

### [London Underground: TfL plans solar farms to help ...](#)

Transport for London (TfL) is planning to set up solar farms to help power its Underground network. The transport body has asked for ...



**ESS**



### [Solar plant to power London Underground trains](#)

UK: Transport for London has awarded EDF Renewables UK a 15-year power purchase agreement to provide solar energy to cover part ...

## Solar power



A photovoltaic power station, also known as a solar park, solar farm, or solar power plant, is a large-scale grid-connected photovoltaic power system (PV system) designed for the supply of ...



### [Renewable Energy Revolution: How a Solar Facility Will Power London](#)

Discover how a groundbreaking solar facility is revolutionizing the London Underground by providing clean energy for its trains. Explore the impact of renewable energy ...



### [New solar farm to power London Underground in major green ...](#)

Transport for London (TfL) has signed a major new deal to power the London Underground using clean solar energy, as part of a long-term plan to decarbonise the capital's ...



### [London Inches Closer to Running Transit System ...](#)

Under a new agreement, London will source enough solar power to run its light railway and tram networks entirely on renewable ...



### [UK Takes a Massive Step Now Toward Greener Urban Transit in London ...](#)



In an ambitious move towards the environment taken by the UK, Transport for London (TfL) has announced an unprecedented solar power initiative to power London's iconic ...



### [Solar farms could partly power London Underground](#)

Transport for London (TfL) is planning to set up solar farms to help power its Underground network. The transport body has asked for ...

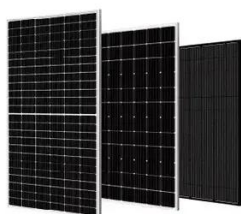
### [Decoding Digital Twins for Solar Power Plants](#)

Effective use of Digital Twin can help solar asset managers detect early patterns of system underperformance, which later can be ...



### [Combining solar power with coal-fired power plants, or ...](#)

Abstract Operators of coal-fired power plants seek ways to increase the efficiency and extend the working lives of their plants by improving the operational flexibility and reducing the ...



### [Photovoltaic \(PV\) Solar Panel Energy Generation data](#)



This dataset contains voltage, current, power, energy, and weather data from low-voltage substations and domestic premises with high uptake of solar photovoltaic (PV) ...



### GRADE A BATTERY

LiFePO4 battery will not burn when overcharged, over discharged, overcurrent or short circuited and can withstand high temperatures without decomposition.



### [Sadiq Khan plans to build solar farms in London's leafy suburbs](#)

TRANSPORT for London (TfL) plans to build giant solar farms to power the capital's underground trains, with leafy commuter towns at the end of lines likely to host the ...

### [Blackfriars Solar Bridge, London](#)

In addition, the bridge will have rain water harvesting systems. UK solar power market details and feed-in-tariff (FiT) scheme The UK is one of the ...



### [New solar facility will provide green power for](#)

TfL is expanding its renewable energy portfolio by launching a tender for a delivery partner to work collaboratively to develop purpose-built solar farms to connect to the London ...

### [Solar farms to power London Underground](#)



Transport for London (TfL) has appointed EDF Renewables UK to generate and deliver green electricity for the London Underground ...





## Contact Us

---

For inquiries, pricing, or partnerships:

<https://www.zawojcsolina.pl>

Phone: +48 22 173 6647

Email: [info@zawojcsolina.pl](mailto:info@zawojcsolina.pl)

Scan QR code for WhatsApp.

