



Maintenance Manual for 200kW Lithium Battery Cabinet





Overview

How do I wire the Eaton Samsung Gen 3 battery cabinets?

Only one ground conductor is required in each conduit. Use this procedure to wire the Eaton Samsung Gen 3 Battery Cabinets to the UPS cabinet. To install wiring to connections: Verify the UPS system is turned off and all power sources are removed. Refer to the applicable UPS Installation and Operation manual for UPS operating procedures.

Does the IBC-LH have a battery cabinet?

In addition, the IBC-LH provides a single battery cabinet solution for 93PM UPS systems 200 kW and below. 93PM 400 kW UPS systems above 200 kW require at least two battery cabinets. The IBC-L and IBC-LH are housed in a single free-standing cabinet with safety shields behind the doors for hazardous voltage protection.

How many cabinets can be paralleled with a 93pm 100-400 kW UPS?

Up to four cabinets can be paralleled with a 93PM 100-400 kW UPS. Figure 38 shows the UPS and 93PM IBC-L or 93PM IBC-LH intercabinet interface connection onelines. Battery Detect and DC Shunt Trip wiring should be a minimum of 18 AWG. Four battery cabinets shown. Battery cabinets 5 through 8 are wired the same.

Does Eaton 93pm-l integrated battery cabinet (IBC) have a 105°C rating?

Page 56 NOTE Callout letters B, C and D map to Figure Line-up-and-match battery wiring with a 105°C rating is factory supplied with the Eaton 93PM-L Integrated Battery Cabinet (IBC). Eaton recommends installing the UPS using wiring and external overcurrent protection breakers sized for the fully rated UPS kW frame size installed.



Maintenance Manual for 200kW Lithium Battery Cabinet



[Eaton 93PM Integrated Battery Cabinet-Large and Large ...](#)

Read all instructions before operating the equipment and save this manual for future reference. Ce manuel comporte des instructions importantes que vous êtes invité à suivre lors de toute ...

[UPS Battery Cabinet Upgrade, Retrofit, Replacement , Mitsubishi ...](#)

Whether leveraging an existing cabinet through a like-for-like replacement or opting for a new UPS battery cabinet or rack altogether, you'll need to consider connector compatibility, cable ...



[Liebert NXL Lithium Ion UPS, 500 kVA / 450 kW](#)

Matching battery cabinets and maintenance bypass cabinets provide a complete power protection solution. Compatible with Lithium Ion battery ...

Specifications

NOTE: The battery temperature must return to ± 3 °C / ± 5 °F of the room temperature before a new discharge at maximum continuous discharge power. If not, the battery breaker may be ...



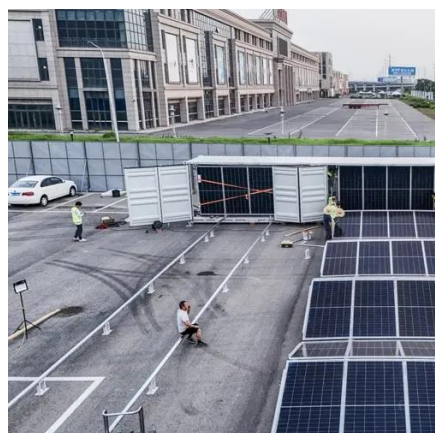
[UBC80 Battery Cabinet Installation, Operation.](#)

IMPORTANT INFORMATION ABOUT THIS MANUAL
SAVE THESE INSTRUCTIONS! This manual contains
important information that is needed during the
installation and maintenance ...



EATON 93PM UPS

EATON 93PM is an ideal three-phase solution for
providing a reliable power backup system,
especially when paired with a Lithium-Ion battery
cabinet. EATON UPS Systems offers ...



GVL200K500DS

Galaxy Lithium-ion Battery Cabinet UL with 17 x
2.04 kWh battery modules Battery Breaker Kit
630A, EL, for Galaxy VS/VL/VXL and Easy UPS 3 ...

[Eaton 93PM L \(208V\) UPS and Samsung Gen 3 Battery ...](#)



The installation manuals of the UPS and battery cabinet describe how to install and operate the Eaton 93PM-L (208V) UPS and battery cabinets. Read and understand the procedures ...



[Eaton 93PM Integrated Battery Cabinet-Small Welded ...](#)

This manual contains important instructions that should be followed during installation and maintenance of the UPS and batteries. Read all instructions before operating the equipment ...

[Vertiv\(TM\) EnergyCore. Lithium Ion Battery Cabinet](#)

The Vertiv(TM) EnergyCore Li5 and Li7 battery systems deliver high-density, lithium-ion energy storage designed for modern data centers. Purpose ...



ESS



[Eaton 93Li G2 Lithium Battery System Catalog](#)

The selected high power lithium battery system features excellent safety performance, high energy density, long lifecycle, good thermal management performance, and environmental- ...

[Galaxy Lithium-ion Battery Cabinet](#)



Important Safety Instructions -- SAVE THESE INSTRUCTIONS. Read these instructions carefully and look at the equipment to become familiar with it before trying to install, operate, service or ...



[Galaxy VS 200/208/220/480 V](#)

Galaxy VS UPS with Up to 5 Internal Battery Strings and Modular Battery Cabinet Up to 9 Battery Strings (GVSMODBC9) - Receiving and Unpacking ESS Energy Storage System for UL9540 ...

[Eaton 93PM-L Installation And Operation Manual](#)

View and Download Eaton 93PM-L installation and operation manual online. 20 - 200 kW 208V UPS. 93PM-L ups pdf manual download.



[P-164000383_93PM_200_UPS Rev4-Rel.book](#)

This manual describes how to install and operate the Eaton 93PM 20-200 kW. Read and understand the procedures described in this manual to ensure trouble-free installation and ...

[Eaton 93PM UPS 100-500 kVA User s and installation guide](#)



This manual contains important instructions that you should follow during installation and maintenance of the UPS and batteries. Please read all instructions before operating the ...



[800V 200 kwh battery bank 200 kwh battery 3 ...](#)

The EGBatt outdoor integrated cabinet energy storage system has independent self-power supply system, 800V 200 KWH high capacity ...



[Eaton 93PM 208V UPS , Lithium-ion ...](#)

The Eaton 93PM 208V UPS is the perfect three-phase power solution for modern data centers. Compatible with lithium-ion batteries for longer ...



[Galaxy Lithium-ion Battery Cabinet Installation and Operation ...](#)

The documentation available online is generally the latest version.



[800V 200 kwh battery bank 200 kwh battery 3 phase BESS](#)



The EGBatt outdoor integrated cabinet energy storage system has independent self-power supply system, 800V 200 KWH high capacity lithium battery is a flexible, modular and extensible ...



TAX FREE

ENERGY STORAGE SYSTEM

Product Model
HJ-ESS-215A(100KW/215KWh)
HJ-ESS-115A(50KW 115KWh)

Dimensions
1600*1280*2200mm
1600*1200*2000mm

Rated Battery Capacity
215KWH/115KWH

Battery Cooling Method
Air Cooled/Liquid Cooled

[200 kWh Battery Storage Industrial Battery ...](#)

200 kwh battery price, commercial battery storage costs, customized design according to electricity demand.

[805-0094 AES Cabinet Operation and Maintenance Manual](#)

It is intended for use by qualified personnel involved in the installation, commissioning, inspection, servicing, and routine system maintenance of the AES Cabinet Energy Storage System.



[Liebert NXL Lithium Ion UPS, 500 kVA / 450 kW , Vertiv UPS ...](#)

Matching battery cabinets and maintenance bypass cabinets provide a complete power protection solution. Compatible with Lithium Ion battery systems. UPS protection for medium and large ...

[DELTA DPH SERIES USER MANUAL Pdf ...](#)



View and Download Delta DPH Series user manual online. DPH Series ups pdf manual download. Also for: Modulon dph series.



[SmartLi 2.0 User Manual](#)

About This Document Purpose This document describes the SmartLi 2.0 intelligent lithium battery cabinet (lithium battery cabinet for short) in terms of its overview, transportation, storage, ...

[EATON 93PM USER AND INSTALLATION ...](#)

View and Download Eaton 93PM user and installation manual online. 93PM ups pdf manual download. Also for: 93pm-100 (400), 93pm-150 (400), ...



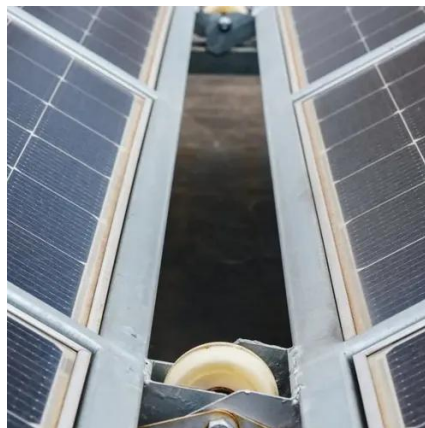
[Galaxy Lithium-ion Battery Cabinet Installation and Operation Manual](#)

The documentation available online is generally the latest version.

[150 kW and 200 kW IAC-T 150 kW and 200 kW IAC-T with ...](#)



This manual contains important instructions that should be followed during installation and maintenance of the UPS system and batteries. Read all instructions before operating the ...



[Eaton 93PM Integrated Accessory Cabinet-Distribution ...](#)

This manual contains important instructions that should be followed during installation and maintenance of the UPS system and batteries. Read all instructions before operating the ...



Eaton 93PM-L UPS

Battery backup protection with additional runtime can be provided by equipping the UPS system with up to four Integrated Battery Cabinets (IBCs) containing sealed lead-acid, maintenance ...





Contact Us

For inquiries, pricing, or partnerships:

<https://www.zawojcsolina.pl>

Phone: +48 22 173 6647

Email: info@zawojcsolina.pl

Scan QR code for WhatsApp.

