



Modular Battery Cabinet IP66 Construction Scheme





Overview

Which accumulator batteries are included in the cabinets covered by the technical specification?

The cabinets covered by the technical specification have been designed to contain the hermetic lead-acid electric accumulator batteries.

Which assemblies can be installed directly in the double-walled housing?

Additional assemblies for active thermal management - e.g. cooler or PCM heat storage - can be installed directly in the double-walled housing. For this purpose, for example, one or more of the inner walls may be designed as cooling surfaces, which are linked to a refrigeration unit outside the B: HOUSE®.

What is the wall thickness of a fully enclosed battery?

Depending on the required thermal properties, the total wall thickness is between 5 mm and 15 mm. One possible design variant of a fully enclosed battery is shown in Figure 7. With the concept of a multifunctional battery housing - B: HOUSE® - a wide variety of basic requirements can be fulfilled within one single unit.

How thick is the battery housing?

The battery housing (B: HOUSE®) has an approx. 15 mm thick GVI® insulation - open on one side. The insulating effect is sufficient to keep the battery pack at operating temperature for more than 12 hours without additional heating! (ambient temperature minus 20 °C; starting temperature of the battery 25 °C; temperature after 12 h 20 °C).



Modular Battery Cabinet IP66 Construction Scheme



E3SXR6

Schneider Electric Philippines. E3SXR6 - Easy UPS 3S Empty Modular Battery Cabinet.

[NEMA 4 , Battery Enclosures , Hardcraft](#)

From Pole-Mount Solutions to Very Large Battery Farms, Hardcraft's State of the Art Battery Enclosures with Optional Climate and Hydrogen Control ...



E3SXR6

Schneider Electric Saudi Arabia. E3SXR6 - Easy UPS 3S Empty Modular Battery Cabinet.



[BATTERY CABINETS CATALOGUE](#)

The cabinets covered by the technical specification have been designed to contain the hermetic lead-acid electric accumulator batteries. The construction characteristics of the ...



[Universal enclosures, cabinets, boxes](#)

Protect the reliability and efficiency of your processes with our complete range of high quality, standard and universal enclosures, cabinets and ...



[Outdoor Enclosures , NEMA-Rated Telecom ...](#)

AZE is a leading, high-quality IP rated or NEMA type weatherproof electrical enclosures, all-in-one ESS solution, solar energy and lithium battery ...



[Battery Enclosures Tech Sheets](#)

The battery enclosure contributes to the structural and safety aspects of the body in white while protecting high-voltage batteries from damage and water. These complex ...



Battery Enclosures



NetworkQUBE® - Battery Enclosures - Telecom & Network Ice Qube's NetworkQUBE® - Modular Dual-Access Telecom & Network Enclosures are *UL Listed 50/50E and 508A NEMA ...

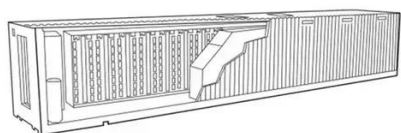


[Requirements for battery enclosures - Design ...](#)

This concept allows effective passive and active thermal management, vibration and crash-proof housing and fixation of the battery cells / modules, fire protection in all ...

[IP65 vs IP66 Modular Cabinets: Key Differences Explained](#)

IP65 modular cabinets resist dust and low-pressure water jets, while IP66 models withstand stronger, high-pressure jets for harsher environments.



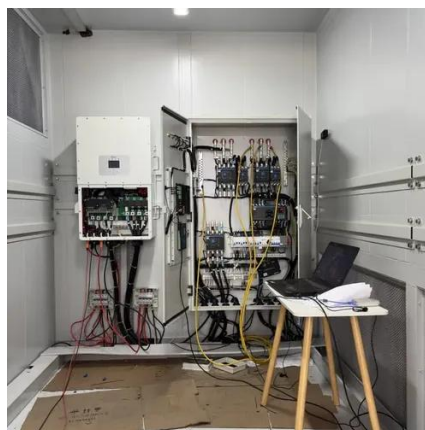
Battery Cabinets

The Battery cabinet is designed to house standard VRLA Batteries of capacity range from 24Ah to 105Ah (C10). The battery cabinets are ...

[Battery Cabinets , Racks , Heavy Duty , Singapore](#)



Singapore based manufacturer of Electronic Enclosures, Outdoor Cabinets, Network Racks, Gas Cabinets, Battery Cabinets, Digital Signage Enclosures and Kiosks, Ipad ...



[Case study-Outdoor Battery Cabinet](#)

These cabinets are an essential component in any outdoor electrical installation, providing the reliability and durability needed to ...



[C& I liquid-cooled outdoor energy storage cabinet](#)

Safe & Endurable Robust electrical systems and fire-resistant materials for high-temperature and high-pressure tolerance. High Protection Level Our outdoor cabinet is IP66 constructed in a ...



[Modular design architecture with smart protection can ...](#)

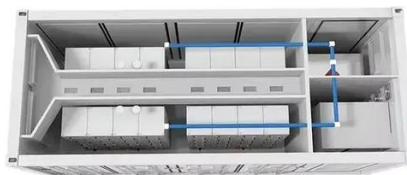
New ways of thinking are emerging. Modular systems could mitigate or even eliminate the risks of fire spreading across an entire installation. Where cabinet-based designs ...



[Battery Cabinet Design Principles , Huijue Group E-Site](#)



When battery cabinet design principles fail, what happens next? Last month's thermal runaway incident in Arizona's solar farm - which caused \$2.3M in damages - underscores the urgency. ...



[BESS Power Conversion System \(PCS\)](#)

LZY Energy's BESS Power Conversion System (PCS) is a major component of Battery Energy Storage Systems (BESS), responsible for converting electrical power between the battery and ...

[Battery cabinets for maximum security , AIB Kunstmann - ...](#)

Your battery deserves a home that protects and thinks: TÜV-certified battery cabinets from AIB Kunstmann - strong, smart, and secure. Tradition meets innovation since ...



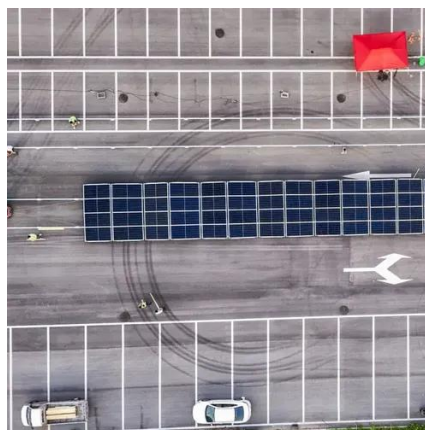
Battery Cabinet

Lead-Acid Battery Cabinet A maximum of three battery groups in up to six battery cabinets can be deployed inside the smart module. If many batteries are configured, they can be deployed ...

MODULYS XM



Vertical modularity using a modular battery cabinet with hot-swap battery boxes provides scalable power back-up with up to 12 battery strings per cabinet. Horizontal ...



[Modular design architecture with smart ...](#)

New ways of thinking are emerging. Modular systems could mitigate or even eliminate the risks of fire spreading across an entire ...



[IQ354503 REV 1_IQ576036NWO-EC2B Portrait Spec](#)

DESCRIPTION: PAD MOUNT 60RU MODULAR CABINET FEATURES 23" RACKS AND 19" ADAPTERS TO D ACCOMMODATE YOUR RACKING REQUIREMENTS. ...





Contact Us

For inquiries, pricing, or partnerships:

<https://www.zawojcsolina.pl>

Phone: +48 22 173 6647

Email: info@zawojcsolina.pl

Scan QR code for WhatsApp.

