



New battery cabinet layout in the computer room



2MW / 5MWh
Customizable





Overview

This article will present innovative concepts for structuring a battery room that not only maximizes the available space but also aligns with your specific needs, especially when utilizing design tools like Homestyler.

This article will present innovative concepts for structuring a battery room that not only maximizes the available space but also aligns with your specific needs, especially when utilizing design tools like Homestyler.

There may be multiple ways to configure the cabinet, so consider all possible options. For instance, if a battery, rack and charger are required the system can be designed using a 2 step rack with the charger mounted above, or with a 2-tier rack with the charger mounted to the side of the rack.

This paper will highlight those environmental design features that must be taken into consideration when designing, constructing, and fitting out a UPS battery room that will result in more than just a physical room to house the strings of batteries. Properly designed and constructed battery rooms.

Creating an effective layout for a battery room is essential for optimizing safety and efficiency, whether it's in a residential, corporate, or industrial context. A carefully designed battery room can enhance productivity significantly. This article will present innovative concepts for structuring.

Designing a battery room is not just about storing batteries—it's about ensuring long-term safety, performance, and compliance. Whether you're powering forklifts with lead-acid traction batteries, running backup systems on stationary lead-acid banks, maintaining golf carts with EV or semi-traction.

When planning an energy storage system, the focus often falls on the batteries themselves: their chemistry, capacity, and lifespan. However, an equally critical, though often overlooked, component is the structure that houses them: the rack or cabinet. A battery mounting system is not just a simple.

A data center battery room houses critical backup power systems, typically using UPS batteries, to ensure uninterrupted operations during power outages. Key components include battery racks, ventilation systems, temperature controls, fire



suppression mechanisms, and safety protocols. These rooms.



New battery cabinet layout in the computer room

GRADE A BATTERY

LiFePO4 battery will not burn when overcharged, over discharged, overcurrent or short circuit and can withstand high temperatures without decomposition.

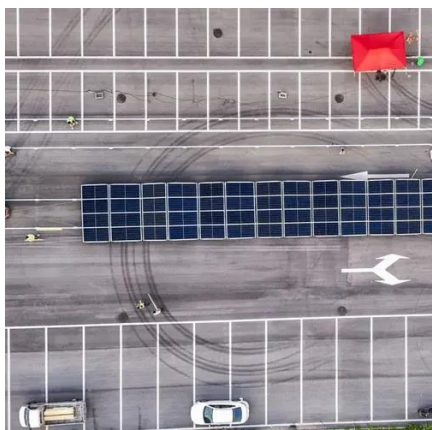


[DREAM KITCHEN VISUALIZER](#)

Explore styles and see how they look in your space Upload an image of your kitchen or choose a template Select an inspirational style image Option to ...

[MISSION CRITICAL FACILITIES DESIGN](#)

This paper will highlight those environmental design features that must be taken into consideration when designing, constructing, and fitting out a UPS battery room that will result in more than ...



[The Definitive Guide to Racks and Cabinets for Battery Banks](#)

In this comprehensive guide, we will delve deep into the world of battery racks and cabinets. We will demystify their function, analyze different types and materials, and break ...

[Optimizing Your Battery Room Design: Essential Tips for Safety ...](#)

A carefully designed battery room can enhance productivity significantly. This article will present innovative concepts for structuring a battery room that not only maximizes ...



[Battery Module Cabinet Guide: Definition, Uses & Design](#)

What is a Battery Module Cabinet? A battery module cabinet is a specially designed enclosure that holds and organizes multiple battery modules in one secure place. Think of it as ...

[What Is the Best Server Room Layout Design? . Computer Room Layout](#)

An article on how to achieve the best computer and server room design layout including the best use of floor space, critical power and cooling.



[C & D Technologies . Stationary Battery Cabinets](#)

In addition to our premium, reliable stationary batteries, we carry a full line of well-engineered, factory-assembled battery cabinets. Selecting the best ...

[Designing Industrial Battery Rooms: Fundamentals and Standards](#)



Designing Industrial Battery Rooms: Fundamentals and Standards Industrial battery rooms require careful design to ensure safety, compliance, and operational efficiency. This article ...



48V 100Ah

[How to Build a Battery Room for Lithium-ion, ...](#)

Build a safe, efficient battery room for lead-acid, lithium-ion & EV batteries. Learn layout, ventilation & charging tips to maximise safety ...



Microsoft Word

ESS EFC52 & EFC54 Series Front Terminal Battery Cabinets are shipped partially assembled, internally pre-wired and come standard with an over current breaker. The removable hinged ...



[Battery Module Cabinet Guide: Definition, Uses](#)

What is a Battery Module Cabinet? A battery module cabinet is a specially designed enclosure that holds and organizes multiple battery ...



[Designing Industrial Battery Rooms: Fundamentals and Standards](#)



Industrial battery rooms require careful design to ensure safety, compliance, and operational efficiency. This article covers key design considerations and relevant standards. 1. Space ...



[Design Ideas for Your Computer Room](#)

Discover innovative and stylish computer room ideas to enhance your productivity and create a personalized ...

[Battery Room Design Aspects , PDF , Electrical Substation](#)

This document outlines design requirements for battery rooms containing vented lead acid batteries. It specifies that battery rooms must be properly ventilated, include safety equipment ...



[How to Build a Battery Room for Lithium-ion. Traction, Stationary](#)

Build a safe, efficient battery room for lead-acid, lithium-ion & EV batteries. Learn layout, ventilation & charging tips to maximise safety & performance.



[C & D Technologies , Stationary Battery Cabinets](#)



Selecting the best cabinets for C& D pure lead batteries depends on UPS model, desired runtime, room layout, and other considerations. C& D ...



[Powerware 9390 Integrated Battery Cabinet \(Models IBC-S ...](#)



The term line-up-and-match refers to battery cabinets that are physically attached to the UPS, share internal wiring, and use the battery cabinet breaker as the battery isolation device.

[Design Your Dream Kitchen with KraftMaid's ...](#)

Try out the free KraftMaid® kitchen remodel visualizer tool to create a design plan for your new kitchen and simulate how the room will look. The virtual ...



[Kitchen Planner online](#)

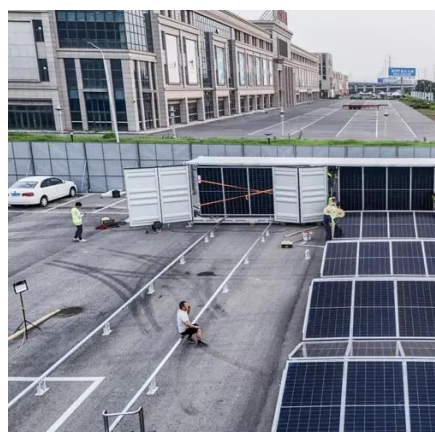
The online kitchen planner works with no download, is free and offers the possibility of 3D kitchen planning. Plan online with the Kitchen Planner and get planning tips and offers, save your ...



[C & D Technologies , Stationary Battery Cabinets](#)



In addition to our premium, reliable stationary batteries, we carry a full line of well-engineered, factory-assembled battery cabinets. Selecting the best cabinets for C& D pure lead batteries ...



What Are the Essential Components of a Data Center Battery Room?

Layouts follow NFPA 75 and IEC 62485 standards, ensuring clear aisles for maintenance and emergency access. Advanced designs incorporate modular battery cabinets ...

What Are the Essential Components of a Data Center Battery ...

Layouts follow NFPA 75 and IEC 62485 standards, ensuring clear aisles for maintenance and emergency access. Advanced designs incorporate modular battery cabinets ...



Considerations For Battery Room Design, Battery Stands and ...

This article looks at the preferred designs for battery rooms and discusses how batteries should be laid out to give a safe environment. Alternative battery stand types are discussed to ...

Guide to PLC Cabinets: Types, Layout, Wiring & Components



Learn the essentials of designing and wiring PLC control cabinets, including component selection, cooling, wiring tips, and safety standards.



[Battery Room Design Aspects , PDF , Electrical ...](#)

This document outlines design requirements for battery rooms containing vented lead acid batteries. It specifies that battery rooms must be properly ...

[MISSION CRITICAL FACILITIES DESIGN UPS BATTERY ...](#)

Battery Room Positioning and Layout The positioning of the battery room must be in close proximity to the UPS modules being supported. For voltage drop considerations, the UPS ...



[Tips for Designing Battery Cabinets/Enclosures . SBS Battery](#)

Tips on how to design a custom enclosure to house and protect your battery system.



[Typical Data Center Layout: Core Components ...](#)



Let's explore how a typical data center layout is organized and what each section contributes to overall performance and reliability with ...





Contact Us

For inquiries, pricing, or partnerships:

<https://www.zawojcsolina.pl>

Phone: +48 22 173 6647

Email: info@zawojcsolina.pl

Scan QR code for WhatsApp.

