



Northwest Data Center Rack Wide Temperature Debugging





Overview

Deploy IoT sensors (e.g., Schneider Electric's StruxureWare) at three rack levels: bottom (intake), middle, and top (exhaust). Use thermal imaging quarterly to identify hotspots. Implement DCIM software like Sunbird for real-time alerts when temperatures exceed thresholds.

Deploy IoT sensors (e.g., Schneider Electric's StruxureWare) at three rack levels: bottom (intake), middle, and top (exhaust). Use thermal imaging quarterly to identify hotspots. Implement DCIM software like Sunbird for real-time alerts when temperatures exceed thresholds.

Every 1 degree Fahrenheit increase in ambient temperature yields a 1 degree F increase for the average CPU. In other words, there's a clear correlation between data center temperature and rack equipment temperature. When, exactly, does this become a problem?

It varies by the equipment, but most.

Check out some examples below! The SNMP Rittal CMC III Hardware Status sensor monitors the overall status of Rittal data center hardware, for example Rittal Computer Multi Control version 3 (CMC III) processing units, Rittal power distribution units (PDU), or Rittal IoT interfaces. It can show the.

On this page you will find the standards recommended by ASHRAE for monitoring the environment in your data center or server room. The settings below apply to A1-A4 class data centers and server rooms. Environmental standards are provided for rack level monitoring, ambient monitoring and water leak.

What Is the Ideal Temperature Range for Server Racks?

ASHRAE recommends 64°F–80°F (18°C–27°C) for Class A1 servers, with humidity at 20%–80%. However, most data centers target 68°F–77°F (20°C–25°C) to buffer against fluctuations. Storage drives perform best below 95°F (35°C), while GPUs/CPUs.

Temperature monitoring in data centers involves an ecosystem of sensors, software, and cooling infrastructure. Here's how these components function

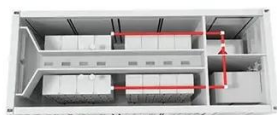


together: Sensors are installed at key points to measure ambient and rack-level temperatures. These devices provide continuous data, alerting operators.

The American Society of Heating, Refrigerating, and Air-Conditioning Engineers (ASHRAE) provides temperature guidelines for rack temperature monitoring. The inlet and outlet temperature standards are specified. It recommends an inlet temperature within the range of 18°- 27°C / 64°- 80°F. The outlet.



Northwest Data Center Rack Wide Temperature Debugging

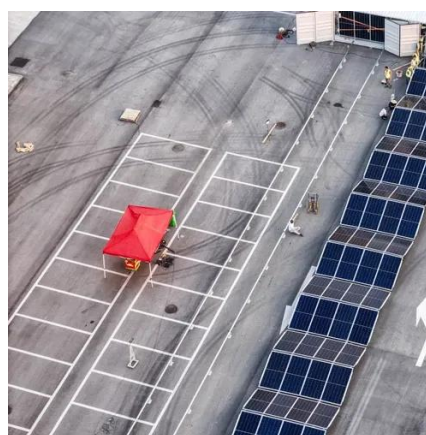


[Northwest Regional Data Center - NWESD 189](#)

Northwest Regional Data Center (NWRDC) Providing quality information services to Washington State school districts and private schools. About the NWRDC We strive to provide quality ...

[DATA CENTER RACK SYSTEMS](#)

At one time, data center rack enclosures and related equipment were considered commodity products -simply a platform to stack equipment, with more enclosures purchased as servers ...

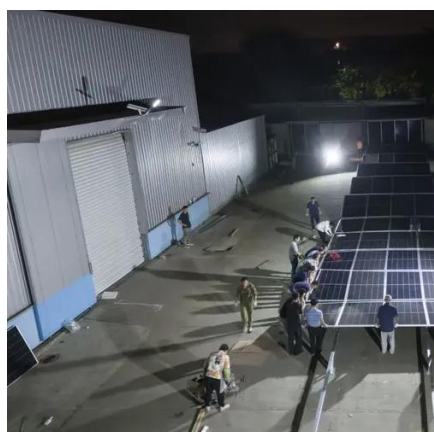


[Rack Airflow and Temperature Measurement System](#)

The flexible, planar airflow analysis system enables rapid, complex measurements of air velocity, temperature, and humidity to profile data center racks and optimize airflow ...

[How to Choose the Best Data Center Rack for Your Needs](#)

When selecting the best data center rack, it's important to consider the future needs of your business. Your infrastructure will evolve, and your rack should be able to ...



[Data Center Temperature Monitoring: Prevent Server Overheating](#)

Data center temperature monitoring deployment follows a structured process designed to maximize coverage while minimizing operational disruption. Professional implementation ...

Facilities , NWRDC

facilities State-Of-The-Art Facilities To Protect Your Data facilities Providing a fully hosted virtual data center. NWRDC's state-of-the-art data centers in ...



[Navigating Liquid Cooling Architectures for Data Centers with ...](#)

Introduction AI training and inference servers use accelerators and processors with high thermal design power (TDP)¹. Air-cooling these chips becomes less practical when consid-ering heat ...



[What is a Data Center Rack? The Complete Guide](#)

...



A data center rack is a standardized frame structure designed to securely house IT equipment such as servers, switches, storage ...



[Rack Temperature Monitoring in Data Center](#)

In rack temperature monitoring, sensors that are placed in the most appropriate location will deliver the most accurate result. When installing, it is important to place them ...

[A Guide to Data Center Temperature Monitoring. Sunbird DCIM](#)

In this blog post, we'll explain why data center temperature monitoring is important, what temperature your data center should be, common challenges in managing temperatures ...



[Data Center Rack Cooling Guide to Efficiency and Performance](#)

This authoritative guide to data center rack cooling is your one-stop resource for mastering thermal management.

[Data Center Racks, Cabinets, and Cages: An In ...](#)



Inside a data center, a labyrinth of servers and high-tech networking gear are arranged in specialized racks, secure cabinets, and ...



[What Are the Industry Standards for Server Rack Temperature ...](#)

Why Is Server Rack Temperature Management Critical? Server rack temperature management prevents hardware overheating, reduces downtime, and extends equipment ...

[Double Section Wall Mount Rack Manufacturer. Wall and Pole Mount Rack](#)

DATA RACK TECHNOLOGIES is a leading Manufacturer, Supplier of Double Section Wall Mount Rack, Wall and Pole Mount Rack at best price. Our office is based in New Delhi, India.



We would like to show you a description here but the site won't allow us.

[A Free Guide to Data Center Racks](#)



Learn how to choose data center racks, their technical features, and maintenance considerations for optimal performance and efficiency.



[NW DATA TECHNOLOGY, INC.](#)

The industry leading manufacturer's representative firm in the Pacific Northwest for all your cabling, datacenter, and project needs.



[Server Rack Temperature Management: Key Considerations and ...](#)

When managing server racks, temperature control is critical. High temperatures accelerate hardware degradation, causing components like CPUs, SSDs, and power supplies ...



[kW per Rack Explained: Optimize Your Data Center](#)

Learn how kW per rack impacts colocation pricing, energy efficiency, and performance. Discover best practices to manage power, ...



[The Pacific Northwest Continues Its Evolution as a ...](#)

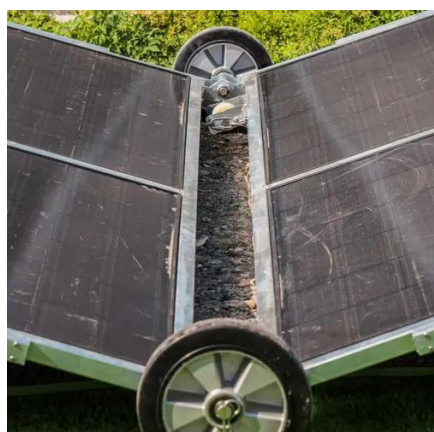


The Pacific Northwest data center market is concentrated in three regions across Washington and Oregon. Learn why the region has ...



[Data Center Temperature Monitoring , PRTG](#)

Diagnose network issues by continuously tracking ambient temperatures, humidity levels, and static electricity in your server racks, cabinets, and your entire data center. Show temperature ...



[Data Center Temperature Monitoring , PRTG](#)

Diagnose network issues by continuously tracking ambient temperatures, humidity levels, and static electricity in your server racks, cabinets, and your entire data center. Show temperature ...



[Rack temperature monitoring: The secret to ...](#)

High-density facilities often use more than six sensors per rack in order to create more precise temperature and airflow models, which is highly ...



- 100KWH/215KWH
- LIQUID/AIR COOLING
- IP54/IP55
- BATTERY 6000 CYCLES

[Data Center Best Practices Guide Energy efficiency solutions ...](#)



Data center design is a relatively new field that houses a dynamic and evolving technology. The most efficient and effective data center designs use relatively new design fundamentals to ...



[Rack temperature monitoring: The secret to comfortable data center](#)

High-density facilities often use more than six sensors per rack in order to create more precise temperature and airflow models, which is highly recommended, especially for data centers ...



[Data Center Server Rack Guide \(2026\): Types, Design, Airflow, ...](#)

Learn everything about data center server racks--definitions, rack types, airflow design, power integration, cable management, and a full buying guide for 2026.



[Data center temperature and humidity guidelines](#)

ASHRAE's data center temperature and humidity standards help admins determine what the environment of the facility should be for ...



[Recommended standards for monitoring server rooms and data centers](#)



Get from this page the industry best practices for monitoring your server rooms or data centers

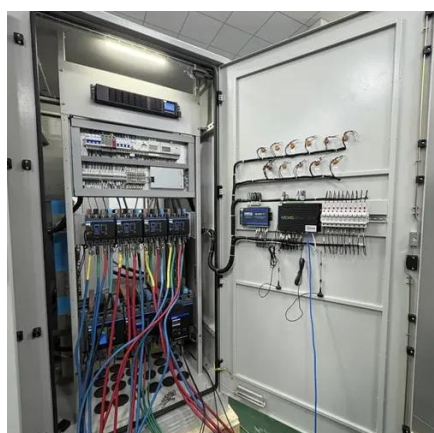


[kW per Rack Explained: Optimize Your Data Center](#)

Learn how kW per rack impacts colocation pricing, energy efficiency, and performance. Discover best practices to manage power, reduce costs, and future-proof your IT ...

[Data Center Server Rack Guide \(2026\): Types, ...](#)

Learn everything about data center server racks--definitions, rack types, airflow design, power integration, cable management, and a full buying ...



[Data-driven fault tolerant predictive control for temperature](#)

This paper presents a novel data-driven fault tolerant predictive controller for temperature regulation of DC with rack-based cooling architecture. First, a data-driven based ...

[The Ultimate Guide to Data Center Racks Features](#)



Data Center Racks are enclosures which are designed to accommodate servers, networking devices, patch panels and racks of other IT equipment.





Contact Us

For inquiries, pricing, or partnerships:

<https://www.zawojcsolina.pl>

Phone: +48 22 173 6647

Email: info@zawojcsolina.pl

Scan QR code for WhatsApp.

