



# Portable power supply voltage range





## Overview

---

Secondary/output AC/DC voltages include the following: 0-140V AC at 7.2A continuous (1.0 kVA), 0-280V AC at 3.6A continuous, 0-560V AC at 1.8A continuous, 0-480V DC at 1.8A continuous (0.86 kVA), 0-240V DC at 3.6A continuous and 0-120V DC at 7.2A.

Secondary/output AC/DC voltages include the following: 0-140V AC at 7.2A continuous (1.0 kVA), 0-280V AC at 3.6A continuous, 0-560V AC at 1.8A continuous, 0-480V DC at 1.8A continuous (0.86 kVA), 0-240V DC at 3.6A continuous and 0-120V DC at 7.2A.

Both the voltage and current output levels can be simultaneously read and monitored with the highly accurate meters. The separate output terminals for both AC and DC voltage provide convenient hookup configurations depending on the type of component being tested. A multi-purpose variable voltage.

A portable variable DC power supply is a device used to provide a stable and adjustable direct current (DC) output voltage. These devices are especially useful for powering electronic projects, testing, and development. Unlike fixed power supplies, which deliver a constant voltage, variable power.

Portable power station features 1\*AC ports , 1\*USB-C port, 2\*USB ports, 1\* car cigarette lighter and a wireless charger at the top. ALLPOWERS portable power station gives you the ports you need to charge all of your devices at the same time. ☑☑☑Super Fast Input 300W Max ☑: ALLPOWERS portable power.

Power your tests with up to 375W across three independent channels in a compact benchtop design. With high accuracy, low noise, and flexible control, it's ideal for demanding applications Explore the Product Autoranging for wider voltage and current test envelope. Is your test system truly.

At its core, a portable handheld variable DC power supply is designed to provide a stable and adjustable voltage output for a range of electronic devices. Unlike fixed power supplies, these units offer a range of voltages, making them incredibly versatile for experimental setups, electronics.

The latest USB PD 3.1 specification increases the power range to 240W (48V, 5A),



now called Extended Power Range (EPR), through a USB-C cable. Table 1 shows how EPR compares to SPR. Table 1. SPR and EPR fixed voltage ranges Requires 5A cable. Requires EPR cable. EPR allows support for up to 240W of.



## Portable power supply voltage range

---



### [Variable Power Supply \(Adjustable Power Supply\)](#)

Find the perfect variable/adjustable power supply for your testing needs. Get precise, adjustable voltage and current for prototyping, troubleshooting, and automated test setups. Explore ...

### [6 Best Portable Power Supply Models \(Fall 2025\) - Ultimate Guide](#)

To be more specific, it has two AC, four DC, three standard USB, and one quick charge USB port. To put it ...



### [The Ultimate Guide to Choosing a Portable Variable DC Power ...](#)

The first feature to consider when choosing a portable variable DC power supply is the voltage and current range. Different projects require different voltage levels, so a power ...



### [USB Type-C® and USB Power Delivery: Designing for both ...](#)

Until recently, the USB PD 3.0 specification allowed for up to 100W (20V, 5A) of power, now called Standard Power Range (SPR), to flow in both directions. The latest USB PD 3.1 ...



### [The Ultimate Guide to Portable Handheld Variable DC Power ...](#)

At its core, a portable handheld variable DC power supply is designed to provide a stable and adjustable voltage output for a range of electronic devices. Unlike fixed power supplies, these ...



### [Portable Variable Voltage Power Supply](#)

A multi-purpose variable voltage power supply available in AC, DC, or AC/DC for all in-shop and field-service electrical technicians.



### [The Voltage Conundrum: Is USB Always 5V?](#)

The USB standard specifies a range of voltage tolerance, from 4.75V to 5.25V, to accommodate minor fluctuations in the power supply. Key Takeaway: The USB standard ...



### [Adjustable AC/DC Power Supplies](#)



Adjustable DC power supplies are capable of delivering a variable output voltage or current. These adjustable power supplies fall into three ...

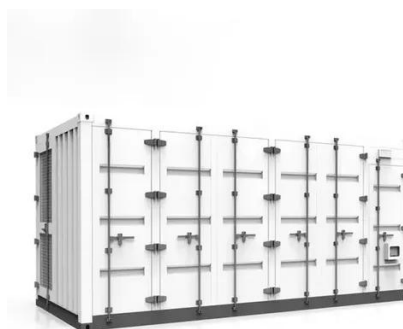


### [7 Best DC Power Supply \[Expert Review & Buyer's ...](#)

When choosing the right bench power supply to test equipment in the lab, consider price, number of channels, reliability, good precision, technical ...

### [Adjustable AC/DC Power Supplies](#)

Adjustable DC power supplies are capable of delivering a variable output voltage or current. These adjustable power supplies fall into three categories: locally adjustable power supplies, ...



- High energy density and long cycle life
- Modular structure
- No need to replace the battery
- Shorter charging time
- Meets 400V car



### [The 7 Best Portable Power Stations of 2025](#)

We evaluated seven power stations of varying size, focusing on each model's maximum output, capacity, charging time, and portability. To test max output, we connected ...

### [How to Power a Raspberry Pi: Pro Tips for Every Use](#)



How Do You Power a Raspberry Pi? In this section, we'll cover what voltage and amperage requirements you'll need for different Pi models and what kind of power supplies to ...



### [Jackery Explorer 1000 User Manual01](#)

Under this mode, you can rapidly power up the portable power station using the AC charging method. This emergency charge function can be activated or deactivated through the Jackery ...

### [Portable Variable Voltage Power Supply](#)

The separate output terminals for both AC and DC voltage provide convenient hookup configurations depending on the type of component being tested. A multi-purpose variable ...



### [Typical Output Voltages for Industrial Power Supplies](#)

Understanding the typical output voltages for industrial power supplies is crucial for selecting the right power solution for your applications. Whether you need a low-voltage supply ...

### [Portable Voltage and Current Test Instruments for ...](#)



Portable Voltage and Current Instruments Time Electronics manufacture a wide range of portable test instruments for sourcing and measuring ...

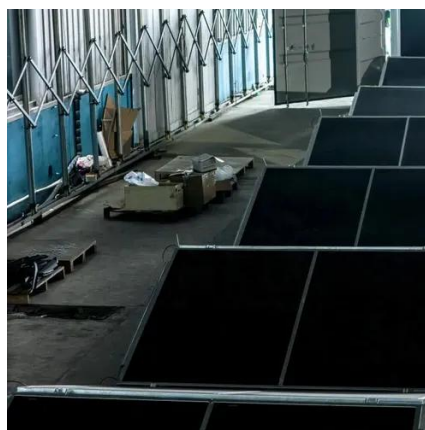


### [Surface charging requirements and power supplies](#)

The wattage of the USB-A port is: For power supplies of 100W or higher: 7.5W (5 volts @ 1.5 amps) For all other equipped power supplies: 5W (5 volts @ 1 amp) For info on how to ...

### [6 Best Portable Power Supply Models \(Fall 2025\) - Ultimate Guide](#)

To be more specific, it has two AC, four DC, three standard USB, and one quick charge USB port. To put it simply, no matter what you have to charge, this unit is more than fit ...



### [Finding the Best Power Supply to Keep Your Arduino Running ...](#)

Consult your Arduino board's documentation to confirm the correct voltage range and barrel jack polarity before connecting any power supply. It takes just a moment, and could ...

## **Power supply**



A power supply is an electrical device that supplies electric power to an electrical load. The main purpose of a power supply is to convert electric current from a source to the correct voltage, ...



[ALLPOWERS Portable Power Station 300W, ...](#)

Portable power source supports charging mobile phones, ...



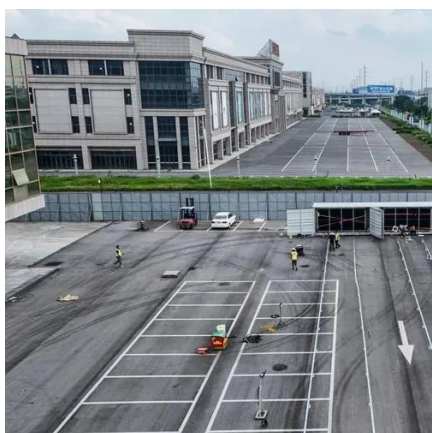
[Variable Power Supply \(Adjustable Power Supply\)](#)

Find the perfect variable/adjustable power supply for your testing needs. Get precise, adjustable voltage and current for prototyping, troubleshooting, ...



[A High-Efficiency, Dual-Mode, Dynamic, Buck-Boost Power ...](#)

The use of a novel supply voltage using adaptive on time control for pulse-frequency-modulation (PFM) mode achieves an accurate output ripple voltage, not to mention higher efficiency under ...





## Contact Us

---

For inquiries, pricing, or partnerships:

<https://www.zawojcsolina.pl>

Phone: +48 22 173 6647

Email: [info@zawojcsolina.pl](mailto:info@zawojcsolina.pl)

Scan QR code for WhatsApp.

