



# Reykjavik s largest energy storage power station





## Overview

---

The Reykjanes power station (known as Reykjanesvirkjun ['rei:ca,nɛs,vɪɾcʏn]) is a geothermal power station located in Reykjanes at the south-western tip of Iceland.

The Reykjanes power station (known as Reykjanesvirkjun ['rei:ca,nɛs,vɪɾcʏn]) is a geothermal power station located in Reykjanes at the south-western tip of Iceland.

The Reykjanes power station (known as Reykjanesvirkjun ['rei:ca,nɛs,vɪɾcʏn]) is a geothermal power station located in Reykjanes at the south-western tip of Iceland. As of 2012, the power plant generated 100MWe from two high pressure 50MWe turbines, using steam and brine from a reservoir at 290 to.

Electricity production at Reykjanesvirkjun started in the month of May in 2006. Machine 1 was commissioned in the middle of May and machine 2 at the end of the same month. The design of the power plant is such that it is generally controlled remotely from a control center in Svartsengi. Unlike the.

Hellisheidi Power Plant since June 2014. In 2016, the injection operations at the Hellisheidi Plant were scaled up again, doubling the environment organisation Sustainable Iceland. The strategy highlights Iceland's goal to be an international leader in geothermal, renewable energy and CCUS. It.

The Reykjanes power station (known as Reykjanesvirkjun ['rei:ca,nɛs,vɪɾcʏn]) is a geothermal power station located in Reykjanes at the south-western tip of Iceland. Quick facts Official name, Country. Min. source temp. As of 2012, the power plant generated 100MWe from two high pressure 50MWe.

Experience firsthand how green, sustainable energy is produced at Iceland's largest geothermal power plant. The Hellisheiði Geothermal Plant, owned and operated by ON Power, generates electricity for Iceland's national grid and provides hot water for the capital region. It is situated in a stunning.

Hellisheiðavirkjun, also known as the Hellisheidi Geothermal Power Plant, is one of the largest geothermal power plants in the world. Located approximately 25 kilometers (15.5 miles) east of Reykjavik, Iceland, this power plant is a shining example of Iceland's commitment to renewable energy and.



## Reykjavik s largest energy storage power station



### Power stations

We operate fifteen hydropower stations, three geothermal power stations and two wind turbines for research purposes in five operating areas in Iceland.

### [Green City: Reykjavik, Iceland](#)

Renewable Energy in Reykjavik Reykjavik, Iceland  
Reykjavik is Iceland's capital and its largest city.  
Reykjavik has pioneered the use of geothermal ...



### [Reykjanes power station](#)

The Reykjanes power station (known as Reykjanesvirkjun ['rei:ca?nes?vIrcYn]) is a geothermal power station located in Reykjanes at the south-western tip of Iceland.



### [REYKJAVIK ENERGY STORAGE TECHNOLOGIES](#)

With the expanding introduction of renewable energy sources and advances in semiconductor and energy storage technologies, direct current (DC) distribution systems that combine renewable ...

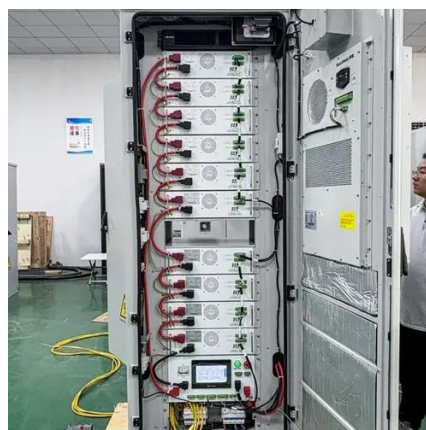


### [Reykjavik Wind and Solar Energy Storage Power Station: A ...](#)

The Reykjavik Wind and Solar Energy Storage Power Station isn't just another renewable energy project--it's a masterclass in solving the intermittency challenge.

### [Hellisheiði Power Station](#)

The Hellisheiði Power Station (Icelandic: Hellisheiðarvirkjun, Icelandic pronunciation: ['hetlls?hei:ðar?vIrcYn]) is the eighth-largest geothermal power station in the world and largest ...



### [The Reykjavik Energy Storage Project: Powering the Future with](#)

Nestled in the world's northernmost capital, the Reykjavik Energy Storage Project is rewriting the rules of sustainable energy. With Iceland already sourcing 85% of its energy from renewables ...



### [Reykjavik outdoor energy storage power supply](#)



Outdoor Portable Energy Storage Power Station A 3000Wh mobile energy storage power supply refers to a high-capacity, portable battery energy storage device with high ...



### [Geothermal Exhibition](#)

Experience firsthand how green, sustainable energy is produced at Iceland's largest geothermal power plant. The Hellisheiði Geothermal Plant, owned and operated by ON Power, generates ...

### **Grein**

The Reykjanes Power Plant is the only seawater-cooled geothermal power plant in the world, and has one of the highest intake pressure to a geothermal turbine.



### [Tesla agrees to build China's largest grid-scale battery power plant](#)

"The grid-side energy storage power station is a 'smart regulator' for urban electricity, which can flexibly adjust grid resources," Tesla said on Weibo, according to a ...



**200kWh  
Battery Cluster**

### [Reykjanes power station](#)



The Reykjanes power station (known as Reykjanesvirkjun['rei:ca?nes?vIrcYn]) is a geothermal power station located in Reykjanes at the south-western tip of Iceland.



### [Reykjavik energy storage plant operation](#)

Operated by ON Power, a subsidiary of Reykjavik Energy, Hellisheiði #240;avirkjun harnesses geothermal energy to produce electricity and hot water for Reykjavik and surrounding areas.

### [Reykjavik energy storage plant operation](#)

Swiss Climeworks and Icelandic Carbfix launched the largest direct air capture and storage of CO2 plant at the Hellisheiði geothermal power plant of ON Power in Iceland. in a flexible ...



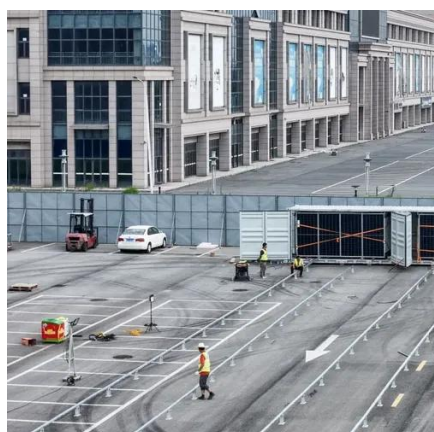
### [Reykjavik energy storage power shell](#)

Icelandic hot spring Here are the Green City Solutions Reykjavik best exemplifies:-Renewable Energy - Reykjavik produces enough renewable energy to supply power to all of the residents ...

### [Reykjanes Power Plant](#)



Unlike the power plant in Svartsengi, Reykjanesvirkjun is only a power plant consisting of two 50 MW dual-flow turbines with sea-cooled condensers, but such a system was a novelty in ...



### [Hellisheiðavirkjun Power Plant](#)

Operated by ON Power, a subsidiary of Reykjavik Energy, Hellisheiðavirkjun harnesses geothermal energy to produce electricity and hot water for Reykjavik and surrounding areas. ...

### [REYKJAVIK LITHIUM BATTERY ENERGY STORAGE POWER STATION ...](#)

Lithium battery energy storage for communication base stations Several energy storage technologies are currently utilized in communication base stations. Lithium-ion batteries are ...



### [Reykjanes power station](#)

The Reykjanes power station (known as Reykjanesvirkjun ['rei:ca?nes?vIrcYn]) is a geothermal power station located in Reykjanes at ...

### [DOES REYKJAVIK ENERGY HAVE A SPACE BASED SOLAR POWER PLANT](#)



Reykjavik energy storage plant operation Project Silverstone an innovative EU-funded project run by ON Power and Carbfix, will deploy full-scale CO2 capture, injection, and mineral storage at ...



### [Hellisheiðavirkjun Power Plant](#)

Located approximately 25 kilometers (15.5 miles) east of Reykjavik, Iceland, this power plant is a shining example of Iceland's commitment to renewable energy and sustainability.



## Contact Us

---

For inquiries, pricing, or partnerships:

<https://www.zawojesolina.pl>

Phone: +48 22 173 6647

Email: [info@zawojesolina.pl](mailto:info@zawojesolina.pl)

Scan QR code for WhatsApp.

