



# Service Quality of Three-Phase Base Stations Using IP54 Outdoor Cabinets





## Overview

---

Equipment that has been designed hardened for outdoor use will perform well in an enclosure rated to IP54. It will give a good level of protection from airborne dust and splashing rain. IP54 allows some ingress of water, subjectively defined as 'limited'.

Equipment that has been designed hardened for outdoor use will perform well in an enclosure rated to IP54. It will give a good level of protection from airborne dust and splashing rain. IP54 allows some ingress of water, subjectively defined as 'limited'.

Effective outdoor cabinet system integration is crucial for maintaining the reliability and performance of critical emergency infrastructure at base stations. To ensure optimal functionality, it is essential to follow certain do's and don'ts during the integration process. Mechanical security.

An IP rating (also known as Ingress Protection Rating) indicates how well a device is protected against solids and liquids. Sometimes called the International Protection rating, it is defined by the International Electrotechnical Commission (IEC) under the international standard EN 60529 (British.

For facility managers, EPC contractors, and infrastructure operators, an outdoor electrical cabinet is a mission-critical asset that protects power distribution, control systems, and communication equipment from weather, corrosion, dust, and unauthorized access. Choosing the wrong weatherproof.

Bison ProFab manufactures high-quality IP54 electrical enclosures. International Protection (IP) standards are used to designate the protective capacity of an electrical enclosure. The two-digit code shows the protection against particles (the first digit) and water (the second digit). Continue.

Ideal for retail stores, restaurants, small factories, telecom base stations, and temporary event sites, these cabinets combine rugged protection (IP54), integrated inverters, and scalable rack-mounted LFP batteries. This blog explores their features, applications, and benefits for small-scale.

Their International (or Ingress) Protection IP rating system defines an enclosure's



protective capacity, and then assigns an IP Code. The code labels an enclosure's IP followed by two numbers; the first digit shows the extent to which equipment is protected against particles, and the second digit. Why are IP54 enclosures used as traffic control cabinets?

IP54 enclosures are commonly used as traffic control cabinets among other applications because of its superior ability to protect the electrical equipment from splashing water or rain conditions from any directions as well as protection from tampering from any solid object aside from a non-harmful deposit of dust.

What are the most common IP ratings for outdoor equipment enclosures?

The following are the most common IP ratings for outdoor equipment enclosures. Equipment that has been designed hardened for outdoor use will perform well in an enclosure rated to IP54. It will give a good level of protection from airborne dust and splashing rain. IP54 allows some ingress of water, subjectively defined as 'limited'.

What is the difference between IP44 and IP54 control cabinets?

Compared to IP44, IP54 provides improved protection against both dust and water, without the cost or bulk of full waterproof models like IP66. IP54 is recognized worldwide and commonly complies with: Manufacturers like ABB, Legrand, PINEELE, and Schneider Electric offer IP54-rated control cabinets for use in light-industrial environments.

How do I know if my enclosure is IP54?

The code labels an enclosure's IP followed by two numbers; the first digit shows the extent to which equipment is protected against particles, and the second digit indicates the extent of protection against water. Our IP54 enclosures have a high level of protection against particles, and a fair amount of protection against water.



## Service Quality of Three-Phase Base Stations Using IP54 Outdoor Cab

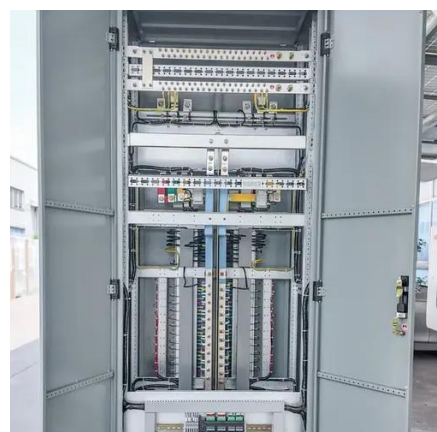
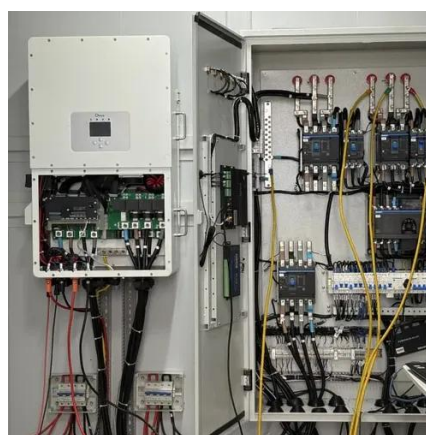


### [IP54 IP65 4KW 3 Phase Solar Inverter Waterproof ...](#)

Product Description IP54 IP65 Waterproof Outdoor Using 4KW 3 Phase DC to AC Solar pump inverter SG600-4KW-D-IP54 Fully automatic system ...

### [What is IP54? A Complete Guide to Electrical...](#)

IP54 is one of the most common ingress protection (IP) ratings used for electrical cabinets, industrial enclosures, and outdoor equipment.



### [Guide to IP54 Enclosures: Protection Levels](#)

In this article, we'll explain what IP54 means, where these enclosures are used, what they're made of, and why they're a good fit for ...

### **Milbank**

Bussed CT Cabinets, Termination Cabinets, Disconnect Combos Milbank is pleased to announce high-amperage Current Transformer (CT) cabinet ...



### [American Midwest Power , Service Connection ...](#)

Ratings are 800 - 6000 amp 600 volt, 3 phase 4wire, 3 phase 3wire, and 1 phase 3wire, NEMA 1/3R dual rated and Isc ratings of 85KA RMS ...



### [Outdoor Energy Storage Cabinets for Small C& I: IP54 All-in-One ...](#)

Ideal for retail stores, restaurants, small factories, telecom base stations, and temporary event sites, these cabinets combine rugged protection (IP54), integrated inverters, and scalable rack ...



### [Sectionalizer Cabinets , Sectionalizing Cabinet](#)

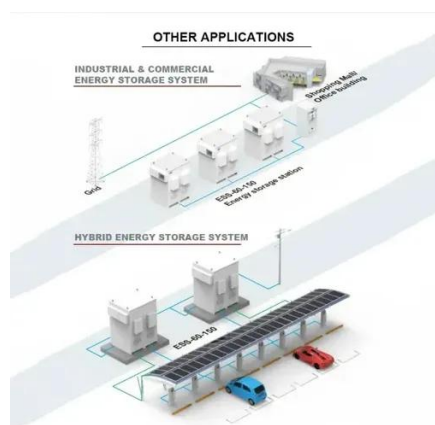
CUBE sectionalizer cabinets are designed to provide robust protection for underground distribution systems deployed in outdoor environments. ...



### [Cable Termination Cabinets](#)



EMI standard paint color is utility green, other options available upon request. Product Features Pad mount cable termination cabinets are available from 800 amp to 4000 amp 3 phase 4 wire ...



### [galvanized steel outdoor enclosure cabinet 42U](#)

Base Station: Outdoor telecom cabinets play a crucial role in supporting base stations for wireless communication networks, ensuring reliable connectivity and coverage.

### [Square D\(TM\) I-Line Power Distribution Panelboards ...](#)

Schneider Electric USA. Browse our products and documents for Square D(TM) I-Line Power Distribution Panelboards - Ideal for service entrance ...



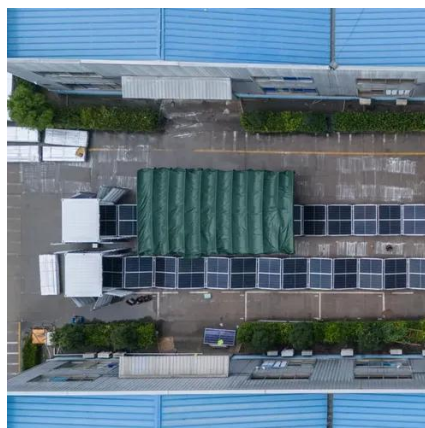
### [Buying Outdoor Electrical Cabinets? Here's What Facility ...](#)

Planning to buy an outdoor electrical cabinet? This in-depth guide explains enclosure ratings, NEMA standards, weatherproof design, cable protection, and durability ...

### [What is IP54? A Complete Guide to Electrical Enclosure Protection](#)



IP54 is one of the most common ingress protection (IP) ratings used for electrical cabinets, industrial enclosures, and outdoor equipment.



### [Guide to IP54 Enclosures: Protection Levels & Standards](#)

In this article, we'll explain what IP54 means, where these enclosures are used, what they're made of, and why they're a good fit for many projects. Whether you're working in ...

### **IP54 Enclosures**

Our IP54 enclosures have a high level of protection against particles, and a fair amount of protection against water. All of our enclosures rigorously ...



### ["IP Ratings Guide: IP54 vs IP65 vs IP68 Industrial Enclosures for ...](#)

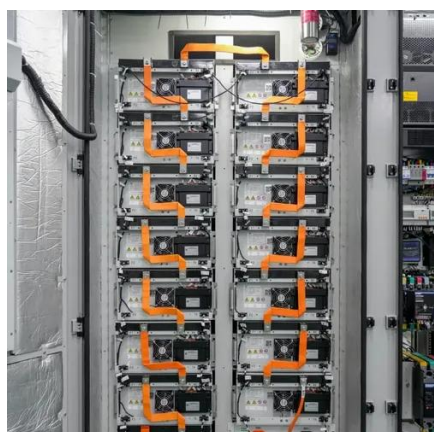
Understanding IP Ratings for Industrial Enclosures: From IP54 to IP68 - What Does Your Equipment Really Need? Industrial enclosures exposed to dust, rainwater, or ...



### [WeatherStrong Outdoor Cabinets](#)



WeatherStrong Outdoor Cabinetry For those with a desire to spend more quality time outdoors, WeatherStrong outdoor cabinetry is designed with ...



### IP54 Enclosures

Our IP54 enclosures have a high level of protection against particles, and a fair amount of protection against water. All of our enclosures rigorously comply with the guidelines, so you ...

### [IP54 Electrical Enclosures](#)

Bison ProFab manufactures high-quality IP54 electrical enclosures. International Protection (IP) standards are used to designate the protective capacity of an electrical enclosure.



### [Guide for Electric Service and Meter Installations](#)

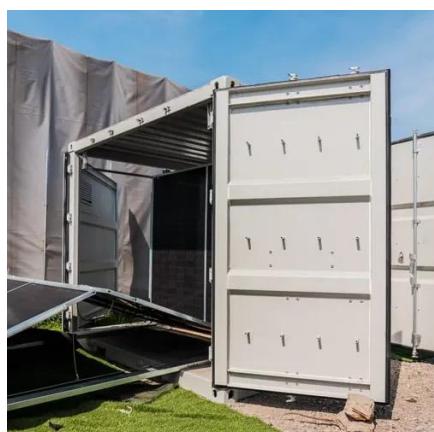
SECTION 1 INTRODUCTION This informational booklet is issued by American Electric Power Company for the guidance of Customers, Engineers, Architects, Contractors and other ...



### [Three Phase Sectionalizing Cabinets](#)



These three phase sectionalizing cabinets feature complete access from the top and sides when the lid is open, they are smooth aesthetically and have a pleasing exterior finish.

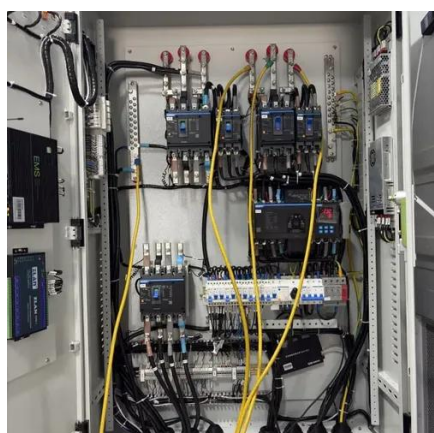


### [What is IP54? A Complete Guide to Electrical ...](#)

IP54 is one of the most common ingress protection (IP) ratings used for electrical guide cabinets, industrial enclosures, and outdoor equipment. It ...

### [A GUIDE TO INGRESS PROTECTION RATINGS FOR ...](#)

Equipment that has been designed hardened for outdoor use will perform well in an enclosure rated to IP54. It will give a good level of protection from airborne dust and splashing rain.



### [Mission Critical Outdoor Telecom Cabinets , nVent SCHROFF](#)

Effective outdoor cabinet system integration is crucial for maintaining the reliability and performance of critical emergency infrastructure at base stations. To ensure optimal ...

## **IP54**



Huijue's IP54 cabinets provide durability, ventilation efficiency, and weather resistance, making them ideal for cost-sensitive projects requiring reliable environmental protection and consistent ...



### [What is IP54? A Complete Guide to Electrical Enclosure Protection](#)

IP54 is one of the most common ingress protection (IP) ratings used for electrical guide cabinets, industrial enclosures, and outdoor equipment. It defines a specific level of defense against ...

### [IP54 vs IP55 vs IP65: How to Choose the Right ...](#)

Compare IP55, IP65, IP66, IP67 and IP54 electrical enclosures. Learn how each rating applies to smart transportation, ...



### [IP54 Electrical Enclosures](#)

Our rigorous approach to manufacturing quality and efficiency, coupled with creative and innovative designs for custom applications, ensures that your IP54 electrical enclosure or ...





## Contact Us

---

For inquiries, pricing, or partnerships:

<https://www.zawojcsolina.pl>

Phone: +48 22 173 6647

Email: [info@zawojcsolina.pl](mailto:info@zawojcsolina.pl)

Scan QR code for WhatsApp.

