



# Solar battery cabinet lithium battery packs connected in series





## Overview

---

How to connect lithium solar batteries in series?

**Connecting Lithium Solar Batteries in Series:** To connect lithium solar batteries in series, you simply link the negative pole of one battery to the positive pole of the next battery. This ensures that the same current flows through all the batteries. The total voltage of the series connection is the sum of the individual voltages.

What is the purpose of connecting lithium solar batteries in series?

The main purpose of connecting lithium solar batteries in series is to increase the output voltage. By adding up the voltages of the individual batteries, you can power devices that require higher voltage amounts. For example, connecting two 24V 100Ah batteries in series will result in a combined voltage of 48V while maintaining the same capacity.

Should you connect lithium solar batteries in series or parallel?

In a parallel connection, the capacity increases while maintaining the same voltage, ideal for longer run times. When setting up lithium solar batteries, understanding how to connect them in series or parallel is crucial for maximizing efficiency and performance. Below, we delve into the specifics of each configuration.

Why are lithium batteries connected in series?

Lithium batteries are connected in series when the goal is to increase the nominal voltage rating of one individual lithium battery - by connecting it in series strings with at least one more of the same type and specification - to meet the nominal operating voltage of the system the batteries are being installed to support.



## Solar battery cabinet lithium battery packs connected in series



### [Can lithium iron phosphate battery packs be connected in series ...](#)

For each individual pack in the series, you need a BMS that ensures proper monitoring, balancing, and protection. In many cases, when you connect multiple packs in ...

### [Can Solar Batteries Be Connected in Series?](#)

Can LiFePO<sub>4</sub> Batteries Be Connected in Series? Yes, LiFePO<sub>4</sub> batteries (Lithium Iron Phosphate) can also be connected in series to increase the system voltage. This is ...



### [How to Connect Lithium Solar Batteries in Series & Parallel](#)

Connecting lithium solar batteries in series or parallel is essential for customizing energy storage systems. In a series connection, the voltage increases while the capacity ...

### [China Lithium Battery Storage Cabinet, Lithium Battery Storage Cabinet](#)

Our Lithium Battery Storage Cabinet offers exceptional quality within the Power Distribution Cabinet & Box category. When selecting a power distribution cabinet or box, important factors ...



### [How to Connect Lithium Solar Batteries in ...](#)

Connecting lithium solar batteries in series or parallel is essential for customizing energy storage systems. In a series connection, ...



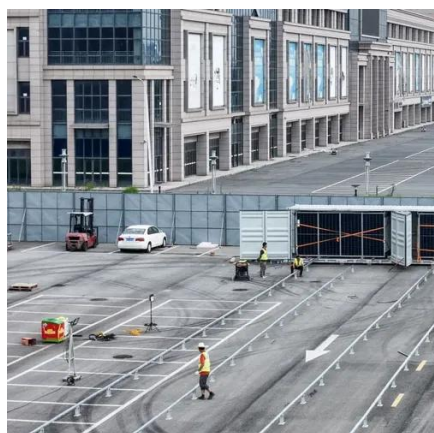
### [How to Connect Lithium Batteries in Series and Parallel?](#)

We'll explore the basics and provide detailed, step-by-step instructions on how to connect li-ion cells in series, parallel, and series-parallel configurations.



### [How to Connect Lithium Batteries in Series ...](#)

We'll explore the basics and provide detailed, step-by-step instructions on how to connect li-ion cells in series, parallel, and series ...



### [A deep analysis of lithium battery in series ...](#)



When connecting battery packs in series or parallel, it is essential to ensure that the polarities of the batteries are correctly ...



### [Batteries in Series vs Parallel: Understand The Differences](#)

For example, the BSLBATT ESS-GRID HV PACK uses 3-12 57.6V 135Ah battery packs in series configuration, and then the groups are connected in parallel to achieve high ...

### [Can lithium battery cells be connected in ...](#)

By connecting a large number of lithium battery cells in series, manufacturers can create battery packs with the voltage and capacity ...



### [Lithium Series, Parallel and Series and Parallel](#)

Lithium Series, Parallel and Series and Parallel Connections Introduction Lithium battery banks using batteries with built-in Battery Management Systems (BMS) are created by ...

### [Connect Batteries in Series and Parallel: ....](#)



Let's break it down step by step so you can decide what works best for your needs--whether it's for a golf cart, solar setup, or ...



### [Can lithium battery cells be connected in series?](#)

By connecting a large number of lithium battery cells in series, manufacturers can create battery packs with the voltage and capacity required to power the vehicle for a ...

### [Can Solar Batteries Be Connected in Series?](#)

Can LiFePO<sub>4</sub> Batteries Be Connected in Series?  
Yes, LiFePO<sub>4</sub> batteries (Lithium Iron Phosphate) can also be connected in ...



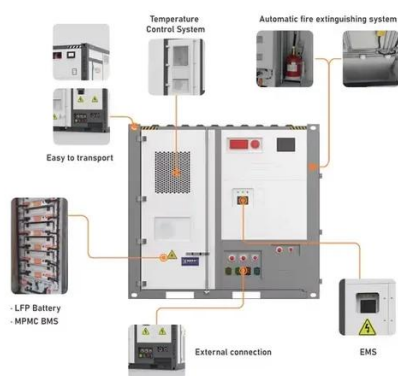
### [How to design an energy storage cabinet: integration and ...](#)

How to design an energy storage cabinet: integration and optimization of PCS, EMS, lithium batteries, BMS, STS, PCC, and MPPT With the transformation of the global ...

### [How a 12V Lithium Ion Battery Works and Which BMS Makes ...](#)



An energy storage device composed of lithium-ion chemistry cells connected in series to generate a nominal voltage of approximately 12.8V is called a 12v lithium ion battery.



### [How to Assemble a LiFePO4 Lithium Battery ...](#)

Learn how to assemble LiFePO4 lithium battery packs for solar systems. Step-by-step guide for DIY, home, or commercial energy storage.

### [Can a lithium battery pack be used in series?](#)

In electric bikes and scooters, series - connected lithium battery packs are used to provide the necessary power for the motor. The ...



### [Comparing Series vs. Parallel Battery Configurations](#)

Electric Vehicles (EVs): EV battery packs link hundreds of lithium-ion cells in series. This enables operating voltages exceeding 400V needed to power motors and vehicle ...

### [Lithium Solar Batteries Series vs Parallel Connection](#)



Lithium solar batteries are essential components of solar energy systems, providing reliable energy storage for various applications. Understanding how to connect these ...

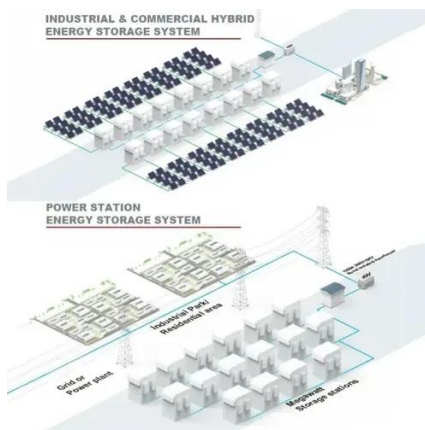


### Battery Energy Storage Systems , BESS Solutions ---- FFD ...

233/261kWh Lithium Iron Phosphate (LiFePO4) batteries, comprised of 5 liquid-cooled battery packs. Each pack is a 1P52S 280 (314)Ah module, and all packs are connected in series to ...

### Can a lithium battery pack be used in series?

In electric bikes and scooters, series - connected lithium battery packs are used to provide the necessary power for the motor. The ability to customize the voltage by connecting ...



### HOW DO YOU CALIBRATE A LITHIUM BATTERY SPOT WELDER?

48V lithium-ion battery is made by combining multiple lithium cells by connecting them in series and parallel, because the efficiency and life of the battery is not very good if the manufacturing ...



### Lithium Solar Batteries Series vs Parallel ...



Lithium solar batteries are essential components of solar energy systems, providing reliable energy storage for various ...



### [Series versus Parallel Connections in Solar Lithium Battery bank](#)

Series vs parallel solar lithium battery bank connections explained for businesses to optimize battery bank voltage, capacity, safety, and system ROI.



## Contact Us

---

For inquiries, pricing, or partnerships:

<https://www.zawojcsolina.pl>

Phone: +48 22 173 6647

Email: [info@zawojcsolina.pl](mailto:info@zawojcsolina.pl)

Scan QR code for WhatsApp.

