



# Solar energy occupies an area per kilowatt





## Overview

---

The average area covered by solar panels to produce one kilowatt (kW) of electricity typically spans approximately 8 to 12 square meters.

The average area covered by solar panels to produce one kilowatt (kW) of electricity typically spans approximately 8 to 12 square meters.

The area required for solar energy production varies significantly based on several factors, including efficiency of the solar panels, geographic location, and type of the panels utilized. The average area covered by solar panels to produce one kilowatt (kW) of electricity typically spans.

**Output per Panel and System Output:** A 1kW system usually consists of 3 to 4 panels, depending on the wattage. Typically, panels range from 300W to 350W each. Knowing the size of a 1kW solar panel in terms of energy generation and dimensions is crucial. Each panel has an area of about 1.6–1.8 square.

A 1 kW system is capable of producing 1 kilowatt of power under ideal conditions (direct sunlight, proper angle, etc.). **Why Does Area per kW Matter?**

When planning a solar panel installation, it's crucial to calculate how much space you need for each kilowatt of power. This helps ensure that your.

Installing solar panels is a significant investment, and accurately calculating the surface area required for installation is crucial for optimizing energy production and maximizing savings. This guide will walk you through the factors influencing solar panel sizing, including energy consumption.

**Definition:** This calculator estimates the area of solar panels needed to generate 1 kW of power based on panel efficiency. **Purpose:** It helps solar installers and homeowners determine how much roof space is required for solar panel installations. **2. How Does the Calculator Work?**

The calculator uses.

How many square meters of space is required per kw solar panel?



The area required for each kilowatt (kW) solar panel system is approximately 5 to 10 square meters, depending on the panel efficiency and wattage. 1. The efficiency of the solar panels influences the space needed significantly, with.



## Solar energy occupies an area per kilowatt

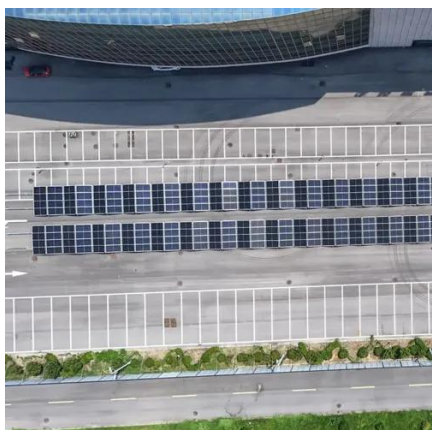


### [area required per kW of solar panels](#)

With the growing interest in solar energy, one question often arises: "How much space do I need for solar panels?" This is crucial ...

### [Solar energy occupies an area per kilowatt](#)

The term "kW per solar panel area" refers to the amount of electrical power, in kilowatts, that a solar panel can generate per unit area, typically measured in square meters.

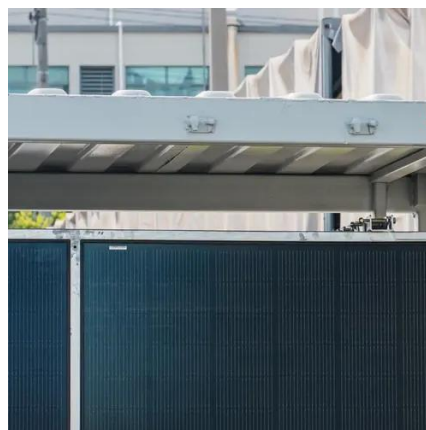


### [How much area does solar energy cover per kw? .. NenPower](#)

The average area covered by solar panels to produce one kilowatt (kW) of electricity typically spans approximately 8 to 12 square meters.

### [Calculate Solar Panel kWp & kWh \(kWh Vs. kWp ...\)](#)

kWh vs. kWp kWh, or kilowatt-hours, refers to an appliance's energy in one hour. A kilowatt equals 1,000-watts, so if you use a 1,000 ...



### 1 KW SOLAR ENERGY OCCUPIES AN AREA

FAQs about Solar energy occupies an area per kilowatt How to calculate kilowatt-peak of a solar panel system? To calculate the kilowatt-peak (KWp) of a solar panel system, follow these ...

### 1 kW Solar Panel Price in India: Capacity, Space & Subsidy

With the growing demand for sustainable energy solutions in India, solar power has emerged as a cost-effective and environmentally friendly alternative. Installing a 1 kw solar ...



### How Much Area Required for 1kW Solar Plant?

With its promise of solar energy, low electric bills and a small carbon footprint, and gained rapid popularity. However, an important question ...

### Total Area Required for Solar Panel Installation ...



Extensive Tables of Common Values for Solar Panel Installation Area Calculations. To start, it's essential to know typical panel ...



### [How many square meters of space is required per kw solar panel?](#)

Typical solar panels range from 250W to 400W, translating to an area of about 1.6 to 2.2 square meters per panel, leading to a total space requirement of around 5 to 10 square ...

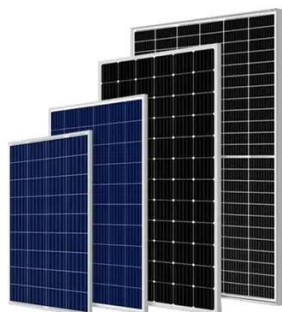
### [Total Area Required for Solar Panel Installation Calculator](#)

Extensive Tables of Common Values for Solar Panel Installation Area Calculations. To start, it's essential to know typical panel sizes, wattages, and efficiencies used in ...



### [How much area is needed for solar panel installation](#)

By dividing your average daily electricity use by your property's peak sun hours (PSH), you can estimate your approximate solar energy system size. If your home consumes ...



### [Solar Panel Area per kW Calculator](#)



Explanation: The formula calculates how much area is needed to capture 1 kW of power at standard test conditions (1000 W/m<sup>2</sup> solar irradiance). 3. Importance of Area Calculation. ...



### [How to calculate the surface area required by solar panels](#)

This guide will walk you through the factors influencing solar panel sizing, including energy consumption, panel wattage, roof orientation, and shading. By the end of this ...

### [How to calculate the surface area required by solar panels](#)

By the end of this guide, you'll be able to estimate the necessary surface area for your solar panels and make informed decisions about your solar energy system.



### [How many square meters of space is required per ...](#)

Typical solar panels range from 250W to 400W, translating to an area of about 1.6 to 2.2 square meters per panel, leading to a total ...

### [How much area does solar energy cover per kw?](#)



The average area covered by solar panels to produce one kilowatt (kW) of electricity typically spans approximately 8 to 12 square ...



### [Solar Power Roof Area Calculator , Roof Space Needed for a Solar ...](#)

Enter Solar Irradiance (W/m<sup>2</sup>): This value is the average solar power received per unit area, typically based on location. Once all fields are filled, click the "Calculate" button to ...

### [How Much Area Required for 1kW Solar Plant?](#)

Discover the space needed for a 1kW solar plant. Learn key factors, panel efficiency, and ideal setup to maximize solar energy output.

- LIQUID/AIR COOLING
- INTELLIGENT INTEGRATION
- PROTECTION IP54/IP55
- BATTERY /6000 CYCLES



### [A Guide on Calculating Area Required for Solar ...](#)

Conclusion At the bottom line, according to the thumb rule of the solar industry, 1 kW of solar panel can be installed in a 100 square ...

### [How much area is needed for solar panel ...](#)



By dividing your average daily electricity use by your property's peak sun hours (PSH), you can estimate your approximate ...





## Contact Us

---

For inquiries, pricing, or partnerships:

<https://www.zawojcsolina.pl>

Phone: +48 22 173 6647

Email: [info@zawojcsolina.pl](mailto:info@zawojcsolina.pl)

Scan QR code for WhatsApp.

