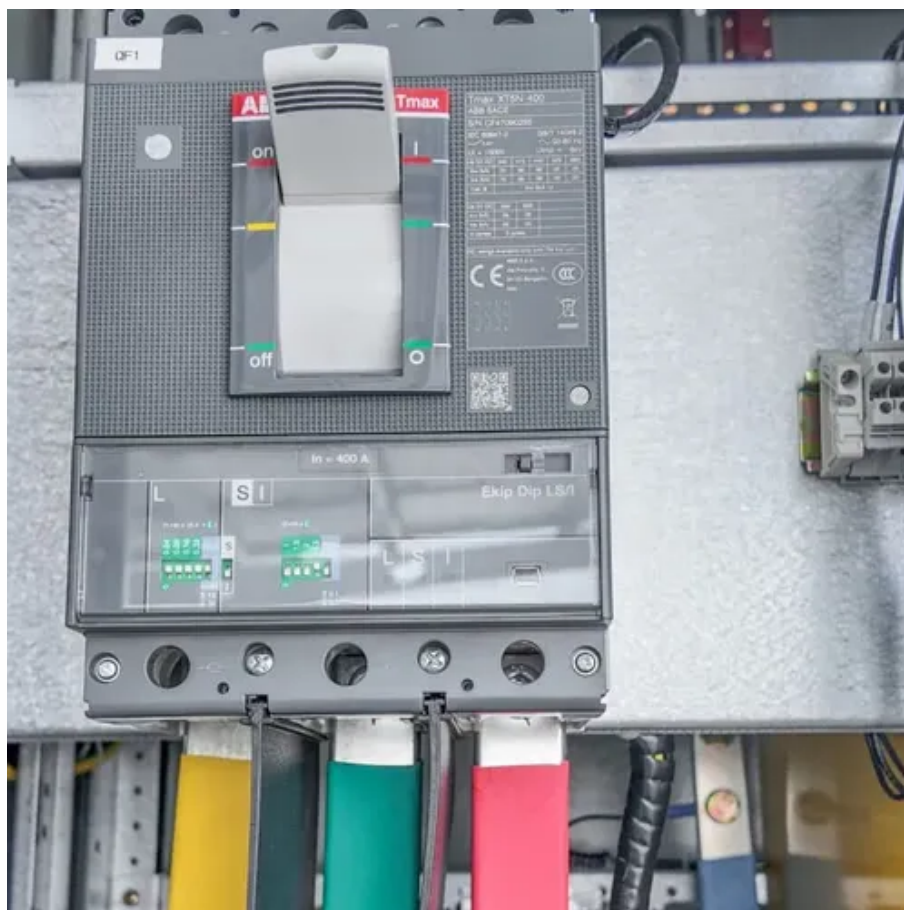




Substation power cabinet with IP66 rating





Overview

These enclosures are certified with an IP66 rating and comply with NEMA 4X standards as well as UL and cUL certifications, ensuring top-tier protection in harsh environments.

These enclosures are certified with an IP66 rating and comply with NEMA 4X standards as well as UL and cUL certifications, ensuring top-tier protection in harsh environments.

Our wall mount electrical cabinet (waterproof box) offer exceptional protection solutions suitable for various critical fields. These enclosures are certified with an IP66 rating and comply with NEMA 4X standards as well as UL and cUL certifications, ensuring top-tier protection in harsh.

The 16U 19 Outdoor Network Cabinet with AC Unit IP 66 NEMA Enclosure (STV-HC-16U600AC) is the perfect solution for safeguarding your networking hardware in demanding conditions. Whether you're managing a data center, securing network equipment, or dealing with industrial network setups, this.

Bison ProFab is approved to manufacture IP66 Electrical Enclosures that are tested and certified by Intertek (a third party testing agency). IP66 electrical enclosures are equivalent to NEMA 4 and NEMA 4X enclosures. International Protection (IP) standards are used to designate the protective.

When selecting electrical enclosures, one of the most critical specifications to consider is the IP (Ingress Protection) rating. Defined by the IEC 60529 standard, IP ratings tell you exactly how well a box guards against solids (like dust) and liquids (like water). Among the most common ratings.

IP66 enclosures offer waterproof protection for your electronic and electrical components in indoor and outdoor applications. Durable IP66 cases and junction boxes are available in a variety of sizes and styles. Material options for IP66 enclosures include plastic, steel, and aluminum. Meeting IP66.

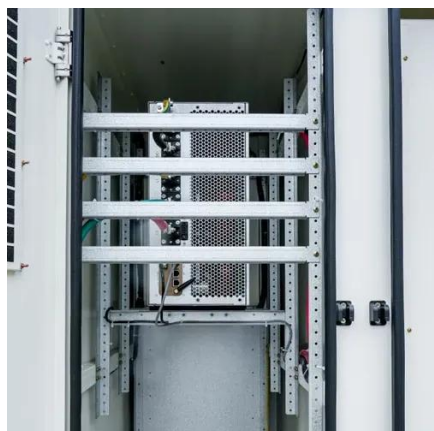
At Nema Enclosures, we observe the IEC standardized International (or Ingress) Protection Code system for measuring enclosures' capabilities. The IP Code defines the degree of protection as "IP" followed by two numbers; the first digit reflecting



in degrees the level of protection against.



Substation power cabinet with IP66 rating



[IP65 vs IP66 Modular Cabinets: Key Differences Explained](#)

IP65 modular cabinets resist dust and low-pressure water jets, while IP66 models withstand stronger, high-pressure jets for harsher environments.

IP Enclosures

IP Enclosures IP Enclosure Ratings & Standards At Nema Enclosures, we strictly adhere to the International Electrotechnical Commission standardized international (or Ingress) Protection ...

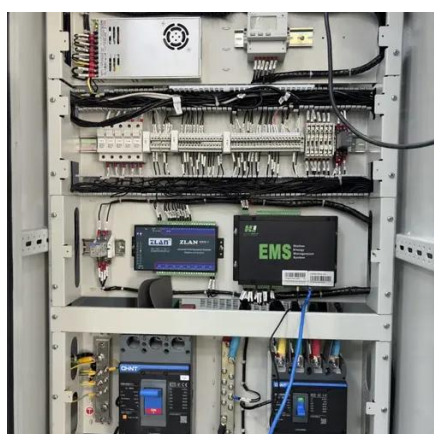


[IP66 electric cabinet](#)

Find your ip66 electric cabinet easily amongst the 74 products from the leading brands (RITTAL, SIAP+MICROS, YSCABINET,) on DirectIndustry, the industry specialist for your ...

[IP Enclosure Ratings & Standards Guide](#)

The IP Enclosure Ratings are a method of demonstrating the efficacy of electrical enclosures in inhibiting foreign bodies such as dust, moisture, liquids, and accidental contact.



[Racks and Cabinets , nVent HOFFMAN](#)

Free-standing cabinets provide a base for standalone and system-level solutions; supporting power, cooling, and monitoring equipment Open-frame racks provide optimal access to IT ...

[Transformer Substation](#)

EN EN_ZA AR DE ES FR IT JA ZH TR RU EN_CA
EN_AU NL PT FA EN_GB



[Primary unit substations design guide](#)

Definition primary unit substation is a close-coupled assembly consisting of enclosed primary high-voltage equipment, three-phase power transformer and enclosed secondary medium ...



Power Supply Cabinet



Shop our power supply cabinets for reliable and efficient power distribution. Perfect for indoor and outdoor applications. Bulk orders and OEM available.

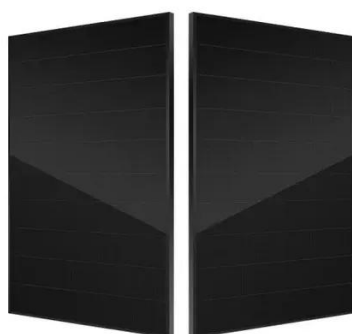


[Thermal Substation Monitoring Cameras](#)

Thermal Substation Monitoring Cameras and Technology by Power Intelligence. Offer the best in Thermal, Electrical, and Infrared Substation ...

[IP66 Enclosures & Protection Standards](#)

Bison ProFab's enclosures are designed to provide custom solutions to your application that require IP66 protection, at a standard-model price. Our state-of-the-art manufacturing process ...



[IP66 Electrical Enclosures . McMaster-Carr](#)

Select the right electrical enclosure for your environment and the accessories you'll need to get it mounted and connected. Choose from our selection of IP66 electrical enclosures, including ...

[Fundamentals of Modern Electrical Substations](#)

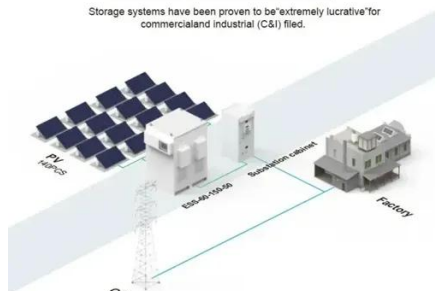


Part 1 of this course series is concentrated on demonstrating how modern power systems are arranged to accomplish all these goals; what place electrical substations have in the overall ...



BASIC APPLICATION

Storage systems have been proven to be extremely lucrative for commercial and industrial (C&I) sites.



Transformer Substation

EN_ZA AR EN_GB DE ES FR IT JA ZH TR RU EN_CA
EN_AU NL PT FA EN

Gemini IP66

ABB offers a total ev charging solution from compact, high quality AC wall boxes, reliable DC fast charging stations with robust connectivity, to ...



IP65 vs. IP66 vs. IP67: Which Enclosure Rating Do You Need?

Among the most common ratings you'll encounter are IP65, IP66, and IP67. This article breaks down what each of these ratings means, compares their protective capabilities, ...



IP66 Enclosures

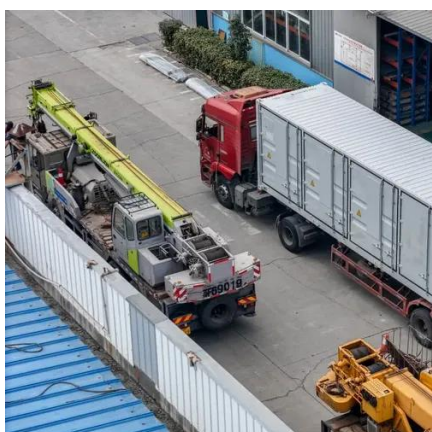


Our IP66 enclosures offer the highest protection against particles and a high level of protection against water. Following strict IP66 standard protection rating rules, these enclosures ...



[10KV 12KV 15KV 3 Phase Cabinet Fixed AC Galvanized Steel ...](#)

10KV 12KV 15KV 3 Phase Cabinet Fixed AC Galvanized Steel Switchgear Distribution Box for 50Hz Substation with IP66 Protection



[16U Weatherproof Cabinet Enclosure](#)

One of the key features of the 16U outdoor network cabinet is its high level protection rating. With an IP66 rated cabinet, it offers outstanding resistance against dust and water, ensuring that ...



[Substation Lighting - LedsMaster](#)

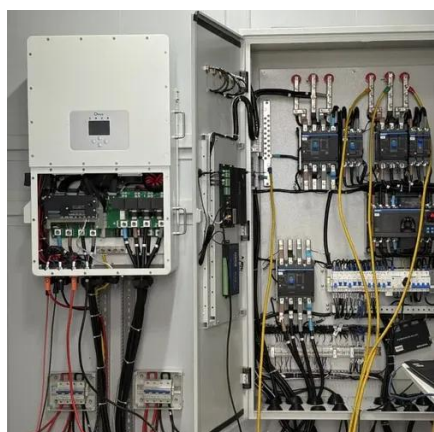
Our flood lighting system for substations is specifically engineered for challenging environments, including high ambient temperatures, humidity, ...



[Wall Mounted Waterproof Box , Wall Mount Electrical Cabinet](#)



Our wall mount electrical cabinet (waterproof box) offer exceptional protection solutions suitable for various critical fields. These enclosures are certified with an IP66 rating and comply with ...

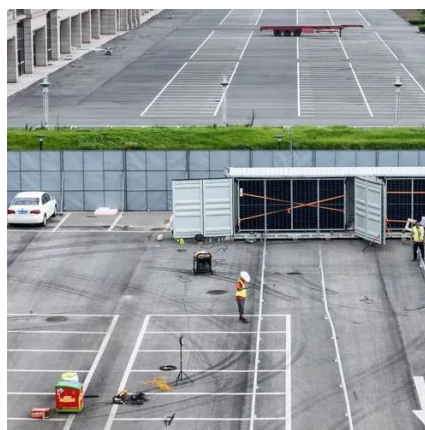


[IP65 vs. IP66 vs. IP67: Which Enclosure Rating Do ...](#)

Compare IP65, IP66, and IP67 enclosure ratings to determine the ideal protection level for your environment. Read real-world case ...

[Wall Mount Electrical Cabinet](#)

Our wall mount electrical cabinet (waterproof box) offer exceptional protection solutions suitable for various critical fields. These enclosures are certified with an IP66 rating and comply with ...



Gemini IP66

ABB offers a total ev charging solution from compact, high quality AC wall boxes, reliable DC fast charging stations with robust connectivity, to innovative on-demand electric bus charging ...



[IP66 Enclosures , IP66 Waterproof Boxes & Cases](#)



Here, you'll find our entire lineup of IP66 models, from stainless steel enclosures to polycarbonate and more. Use the sorting tools in the sidebar to find the size and features you need or browse ...



[IP Ratings - A Guide to IEC 60529 / EN 60529 Ingress Protection Ratings](#)

IP ratings are extremely important as they indicate environments in which casings and enclosures of electrical and electronic products are safe to use. After reading this guide, ...



[IP66 Enclosures , IP66 Waterproof Boxes & Cases](#)

Here, you'll find our entire lineup of IP66 models, from stainless steel enclosures to polycarbonat and more. Use the sorting tools in the ...



[IPrated Power Cabinet , Huijue Group E-Site](#)

Germany's Transformation: A Blueprint for Success After adopting IP66 power cabinets in Bavarian substations, maintenance costs dropped 40% YOY. The secret? Hybrid cooling ...



[16U Weatherproof Cabinet Enclosure](#)



One of the key features of the 16U outdoor network cabinet is its high level protection rating. With an IP66 rated cabinet, it offers outstanding resistance against dust and water, ensuring that ...



SUPPORT REAL-TIME ONLINE
MONITORING OF SYSTEM STATUS



[Design Guide for Rural Substations](#)

The following current and former members of the Substation Subcommittee of the (NRECA), Transmission and Distribution (T& D) Engineering Committee provided invaluable assistance in ...

[IP65 vs. IP66 vs. IP67: Which Enclosure Rating Do](#)

...

Among the most common ratings you'll encounter are IP65, IP66, and IP67. This article breaks down what each of these ratings ...





Contact Us

For inquiries, pricing, or partnerships:

<https://www.zawojcsolina.pl>

Phone: +48 22 173 6647

Email: info@zawojcsolina.pl

Scan QR code for WhatsApp.

