



Tax rate for flow battery services at luanda solar telecom integrated cabinets





Overview

What tax services does PwC Angola offer?

PwC Angola offers a range of tax services to assist taxpayers with tax structuring, tax compliance, oil and gas taxation, mergers and acquisitions, indirect taxation, financial services taxation, individual taxation, tax litigation, etc. Last business day of April (companies under the simplified regime) and May (companies under general regime).

Are foreign companies taxable in Angola?

The repatriation of profits by permanent establishments of non-resident companies in Angola is taxable under the investment income tax at a rate of 10%. Strategic investment projects from foreign companies may be eligible for tax incentives under the Private Investment Law (e.g. reduction of the corporate tax rate by 20% for two years).

What is the tax rate for remittance in Angola?

Remittance of profits from permanent establishment of non-resident entities in Angola are subject to a 10% investment income tax rate. However, if the profit was obtained from shares admitted to trading on a regulated market a reduced tax rate of 5% is applied during the five years after the Income Tax Code enters into force.

Does Angola have a progressive tax system?

Moreover, it is worth noting that the Angolan corporate tax system does not employ a progressive tax rate based on income levels, which is a notable characteristic compared to other countries in the region. Instead, all qualifying companies face the same flat tax rate, regardless of their revenue.



Tax rate for flow battery services at luanda solar telecom integrated



51.2V 300AH

[Angola Tax Tables 2025](#)

Discover the Angola tax tables for 2025, including tax rates and income thresholds. Stay informed about tax regulations and calculations in ...

Angola

Section A Section B Exemptions IIT Rate Assessment and Payment Section A includes: 1. Interest on credit facilities. 2. Interest on loans. 3. Income derived from deferred payments. The tax is due at the moment that the income starts to be due or is presumed to be due. A minimum annual interest rate of 6% is deemed on loan agreements and credit facilities, except if another rate is proven through a written and See more on taxsummaries.pwc lloydsbanktrade



Tax rates in Angola - International Trade Portal

Learn about taxes in Angola. Find out information on corporate tax rates, individual income tax or consumption taxes.



Angola

Corporate income tax (CIT) is levied, currently at a 25% rate, on the profits deriving from business activities carried out in Angola by resident entities or non-resident ...



A.I.S.

Obtain information about A.I.S. - ANGOLA INTEGRATED SERVICES, S.A. : Get Angolan Registry information, check legal status, identify shareholders and directors, assess financial ...



Angola

WHT is applicable on payments of services (some exemptions apply) at the rate of 6.5%. For Angolan taxpayers, the tax is ...

[An Overview of the Tax System in Angola](#)

Looking ahead, the future of Angola's tax landscape appears to be dynamic, especially with ongoing dialogues regarding potential ...



Angola: Tax system

I. General Information Angola has a schedular tax system with several taxes on income earned by corporations and/or individuals. The ...

[A Comprehensive Guide to Telecom Battery Cabinets](#)



A comprehensive guide to telecom battery cabinets provides essential information on their features, types, selection criteria, installation tips, and innovations in technology.



Angolan Tax Guide

Rates - Consumption tax rates vary significantly depending on the product, ranging from 2% to 30%, despite the 10% general tax rate. Consumption tax on services varies ...

Tax rates in Angola

Learn about taxes in Angola. Find out information on corporate tax rates, individual income tax or consumption taxes.



[Telecom Batteries , Victron Energy](#)

Telecom Batteries Designed for telecom applications; excellent 'floor space savers' for marine and vehicle applications The deep cycle AGM telecom ...

[Understanding Telecom Racks and Cabinets: ...](#)



Learn everything about telecom racks and cabinets--types, functions, and applications in modern communication systems. Discover ...



Angola

WHT is applicable on payments of services (some exemptions apply) at the rate of 6.5%. For Angolan taxpayers, the tax is regarded as an advanced payment of the CIT due at ...

[Cell Phone Tax Rates by State in 2026 . Wirefly](#)

Below is a list of state & local taxes and fees on monthly cell phone service. The federal tax rate on wireless service (called the USF, or Universal ...



LPR Series 19' Rack Mounted



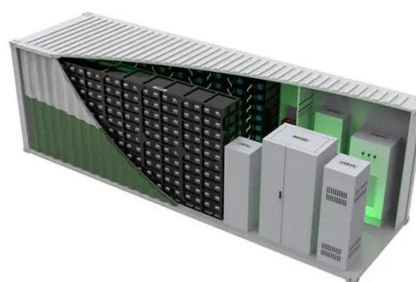
[Policies and tax benefits](#)

Rate: The general Industrial Tax rate is 25%. For income derived exclusively from agricultural, aquaculture, apiculture, poultry, fishing, forestry and livestock activities, the single ...

Angola



Supplies of goods made by supermarkets, supplies of hotel and restaurant services, supply of services provided by commercial banks, supply of water and energy, and ...

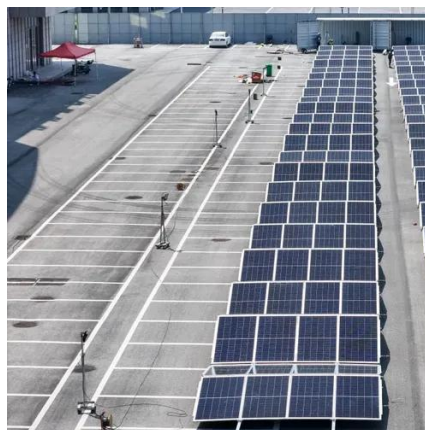


[Policies and tax benefits](#)

The general Industrial Tax rate is 25%. For income derived exclusively from agricultural, aquaculture, apiculture, poultry, fishing, forestry and livestock activities, the single rate is 10%. ...

[Telecom and Network Equipment Cabinets ...](#)

ICEqube delivers industry-leading NEMA Cabinets and Racks designed to safeguard critical rack-mount equipment and batteries.



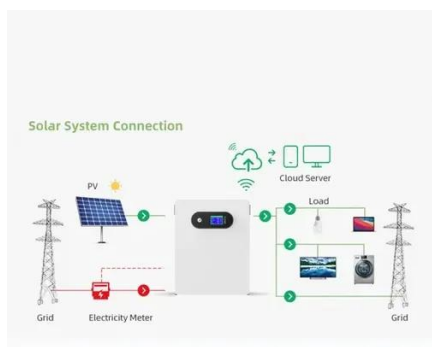
[US Telecommunications: State Taxes, Fees, and Regulatory ...](#)

Examines US telecommunications state taxes, fees, and regulatory obligations. Covers state-specific Universal Service Fund, 9-1-1 surcharges, and compliance.

[Angola Tax Tables 2025](#)



Discover the Angola tax tables for 2025, including tax rates and income thresholds. Stay informed about tax regulations and calculations in Angola in 2025.



Angola

PwC Angola offers a range of tax services to assist taxpayers with tax structuring, tax compliance, oil and gas taxation, mergers and acquisitions, indirect taxation, financial ...

[Understanding the Corporate Taxation System in Angola: Rates](#)

Explore the corporate taxation system in Angola, including the standard 30% tax rate, incentives for specific sectors, filing requirements, and available tax credits. This ...





Contact Us

For inquiries, pricing, or partnerships:

<https://www.zawojcsolina.pl>

Phone: +48 22 173 6647

Email: info@zawojcsolina.pl

Scan QR code for WhatsApp.

