



Technical considerations for parallel connection of battery cabinets





Overview

Should batteries be connected in parallel?

Connecting batteries in parallel is an effective method to increase overall capacity while maintaining voltage levels; this approach is particularly beneficial for applications requiring extended runtimes, but it comes with specific considerations that must be understood to ensure optimal performance.

How do I minimize risks when creating a parallel battery setup?

To minimize risks when creating a parallel battery setup, follow these safety tips: **Use Identical Batteries:** Always use batteries of the same type, capacity, and state of charge to avoid imbalances. **Check Voltage and Charge Levels:** Ensure all batteries are at the same voltage and fully charged before connecting them.

What should I do when connecting batteries in parallel?

When connecting batteries in parallel, it is crucial to: Use batteries of the same type, age, and capacity to avoid imbalances. Ensure proper connections to prevent resistance-related issues. Monitor individual battery performance to detect any weaknesses. **How Does Temperature Affect Performance in Parallel Connections?**

.

What is the capacity of a battery bank in a parallel connection?

In a parallel connection, the capacity of the battery bank is the sum of the capacities of each battery. For instance, if you connect two 6-volt 4.5 amp-hour (Ah) batteries in parallel, the resulting configuration will provide 6 volts at a total capacity of 9 amp-hours (4.5 Ah + 4.5 Ah).



Technical considerations for parallel connection of battery cabinets

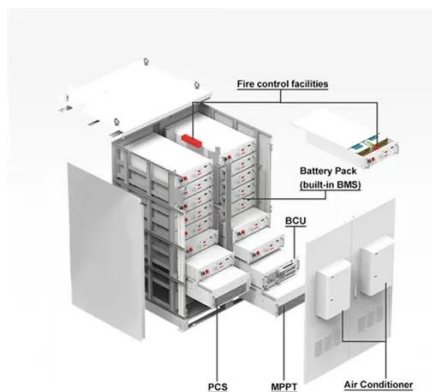


[Can rack mounted lithium iron phosphate batteries be ...](#)

Conclusion In conclusion, rack-mounted LiFePO4 batteries can be connected in series, parallel, or a combination of both to achieve the desired voltage and capacity for your ...

[Parallel Redundant Uninterruptible Power Supply](#)

The parallel redundant system consists of one parallel cabinet, two identical UPS cabinets, and up to four battery cabinets per UPS. Each UPS module may have its own ...



[Wiring Batteries in Parallel: Understanding ...](#)

Learn how to wire batteries in parallel to boost capacity and extend power. Step-by-step guide for efficient battery connections.

[Series vs Parallel Battery Wiring: Key ...](#)

When using multiple batteries in a project, you have two primary wiring configurations--series and parallel. Each has distinct ...



[Guide to Connecting Batteries in Parallel ...](#)

Learn the safety rules, and wiring tips for connecting batteries in parallel to expand capacity, balance load, and extend energy storage ...



[Batteries In Parallel: Maximize Power And Efficiency In Your ...](#)

Learn how to connect batteries in parallel to maximize power and efficiency in your setup. This guide covers the benefits of parallel battery configurations, including increased ...



[Analysis of lithium battery in series and ...](#)

This article will comprehensively interpret the differences between battery in series and parallel connections from basic principles ...



Battery Cabinet



Lithium Battery Cabinet SmartLi 3.0 Scenario where SmartLi 3.0 lithium battery cabinets are deployed outside the smart module: One integrated UPS can connect to a ...

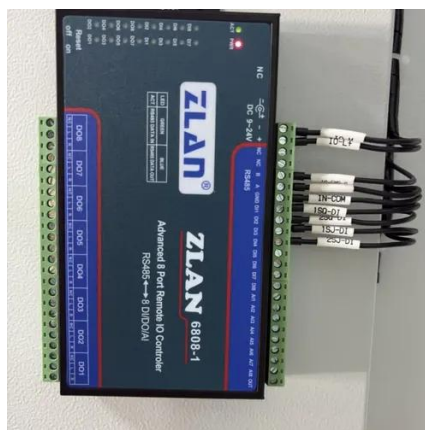


[How To Wire Batteries In Parallel Or Series? . Redway Tech](#)

What defines parallel battery wiring? Parallel wiring links positive terminals together and negative terminals together, boosting capacity without altering voltage. Key considerations ...

[Series, Parallel, and Series-Parallel ...](#)

Learn battery connections: series, parallel, and series-parallel setups. Ensure safety, maximize performance, and extend battery lifecycles.



[Wiring Batteries in Parallel: Understanding the Dangers and ...](#)

Learn how to wire batteries in parallel to boost capacity and extend power. Step-by-step guide for efficient battery connections.



[How To Make A Parallel Battery Connection Safely?](#)



Parallel battery connections combine two or more batteries to increase capacity (Ah) while maintaining the same voltage. Safe setups require identical batteries matched in ...



[How to Increase Battery Capacity with ...](#)

Connecting batteries in parallel is an effective method to increase overall capacity while maintaining voltage levels; this approach ...

[What Happens When You Connect Batteries in Parallel?](#)

Technical Considerations for Parallel Battery Connections While connecting batteries in parallel offers several advantages, it is essential to adhere to specific technical ...



[What Is Parallel Battery Wiring and How Does ...](#)

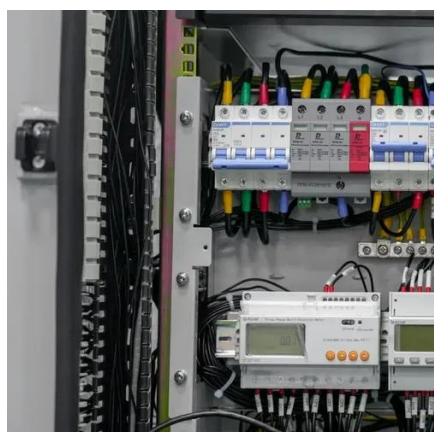
Parallel battery wiring connects battery terminals of the same polarity to increase total capacity (amp hours) while maintaining the same ...



[Connecting high temperature Batteries in Series or Parallel: A](#)



Cost and Space Constraints: Cost and space considerations can affect the decision, as parallel connections require more batteries and may require additional wiring and ...



[Safety Tips for Connecting Batteries in Series and Parallel](#)

Ensure safety when connecting a battery in series and parallel. Learn about risks like overcharging, thermal runaway, and mismatched cells, plus prevention tips.

[Guide to Connecting Batteries in Parallel Properly - PowMr](#)

Learn the safety rules, and wiring tips for connecting batteries in parallel to expand capacity, balance load, and extend energy storage efficiently.



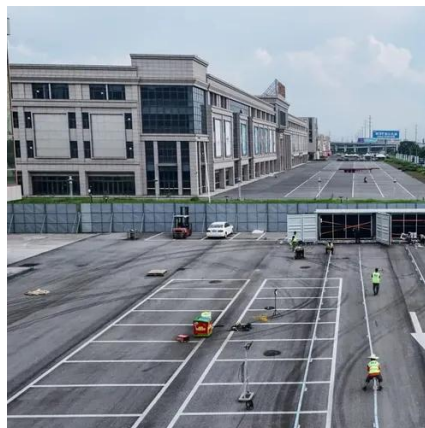
[Battery Series vs Parallel Explained](#)

Did you know that wiring batteries incorrectly can reduce their lifespan by 40% or even cause dangerous overheating? Whether you're powering an RV, solar panel system, or ...

[Parallel connection of energy storage cabinets](#)



Battery Energy Storage System Design optimization cuts lead time by 1/2 (VS traditional BESS structure) Complete IEC62619, IEC62477, IEC61 000, EN50549, G99, UN3536, UN38.3, ...



[Series, Parallel, and Series-Parallel Connections of Batteries](#)

Learn battery connections: series, parallel, and series-parallel setups. Ensure safety, maximize performance, and extend battery lifecycles.

[Can solar battery cabinets be connected in parallel?](#)

Technical Feasibility From a technical perspective, solar battery cabinets can indeed be connected in parallel. When we connect battery cabinets in parallel, we are ...



[How to Increase Battery Capacity with Batteries in Parallel](#)

Connecting batteries in parallel is an effective method to increase overall capacity while maintaining voltage levels; this approach is particularly beneficial for applications ...



Contact Us

For inquiries, pricing, or partnerships:

<https://www.zawojcsolina.pl>

Phone: +48 22 173 6647

Email: info@zawojcsolina.pl

Scan QR code for WhatsApp.

