



# The distance between dominica energy storage power station and the building





## Overview

---

- The distance between battery containers should be 3 meters (long side) and 4 meters (short side). If a firewall is installed, the short side distance can be reduced to 0.5 meters. • Per T/CEC 373-2020, battery containers should be arranged in a single-layer configuration.
- The distance between battery containers should be 3 meters (long side) and 4 meters (short side). If a firewall is installed, the short side distance can be reduced to 0.5 meters. • Per T/CEC 373-2020, battery containers should be arranged in a single-layer configuration.

How many meters is the distance between energy storage power stations?

The distance between energy storage power stations varies widely depending on several factors, including the technology used, geographic location, and intended function of the stations. 1. Energy storage systems can be located.

g) In the event of a garage-site, the minimum distance of separation between an LPG storage tank and oxygen or gaseous hydrogen shall follow Table 1. h) Refer to Table 2 for additional minimum separation distances within the facility Table 1 - Separation distance of LPG tanks from oxygen and.

Dominica is taking a pragmatic step towards energy security and sustainable development, aligning with the global shift towards decarbonisation and infrastructure modernisation. The commissioning of a 6 MW / 6 MWh Battery Energy Storage System (BESS), installed at the DOMLEC facility in the Fond.

Nuclear power – alongside renewables – is a low-carbon source of electricity. [pdf] [FAQS about What are the mobile energy storage power stations in Nauru ] Where is Bandar Seri Begawan located?

Bandar Seri Begawan is located at latitude 4.89035 and longitude 114.94006. It is part of Asia and the.

How many meters are the distances between energy storage stations?

1. Distances between energy storage stations range widely based on various



factors, typically falling between 100 to 500 meters, local regulations, geographical considerations, and type of energy being stored. These distances can.

This is the Energy Report Card (ERC) for 2023 for the Commonwealth of Dominica. The ERC also includes sectoral data and information on policies and regulations; workforce; training and capacity building; and related areas. The data and information that are available in the ERC were mostly provided.



## The distance between dominica energy storage power station and the



### [Safety Clearance Recommendations for Transformer](#)

It includes clearance from outdoor liquid insulated transformers to buildings (NEC), Dry type transformer in indoor ...

### [2023 Dominica Energy Report Card](#)

The data and information that are available in the ERC were mostly provided by the government ministries, agencies, and departments, that have responsibility for statistics and planning, in ...



### [How many meters are the distances between ...](#)

Distances between energy storage stations range widely based on various factors, typically falling between 100 to 500 meters, ...



### [How many meters is the distance between energy](#)

...

The distance between energy storage power stations varies widely depending on several factors, including the technology used, ...



### Safe distance between energy storage and building

Storage above 400KG: For larger storage, other safety requirements exist, including the maintenance of a minimum separation distance between bottle storage and any boundary, ...

### How many meters is the distance between energy storage power stations

The distance between energy storage power stations varies widely depending on several factors, including the technology used, geographic location, and intended function of ...



### To BESS, or Not to BESS? The Emergence of ...

However, that is not always feasible with BESS. BESS facilities must connect to the local power grid through a substation with ...



### Essential Safety Distances for Large-Scale Energy Storage Power Stations



Discover the key safety distance requirements for large-scale energy storage power stations. Learn about safe layouts, fire protection measures, and optimal equipment ...

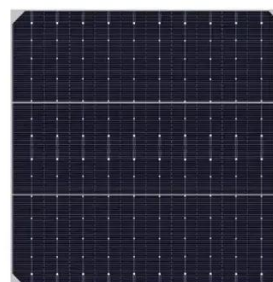


### [What are the Essential Site Requirements for Battery Energy Storage](#)

What are the key site requirements for Battery Energy Storage Systems (BESS)? Learn about site selection, grid interconnection, permitting, environmental considerations, ...

### [Dominica's Energy Transformation: How BESS is Changing the ...](#)

From this perspective, the launch of the energy storage system in Dominica is not merely an engineering feat. It's a message to the market: investments in this jurisdiction come ...



### [THE ESSENTIAL GUIDE TO ENERGY STORAGE BUILDING DISTANCE](#)

Station Layout: Within the energy storage power station, office, accommodation, and duty areas should maintain necessary safety distances from battery prefabricated modules, with a ...

### [Dominica Energy Storage Power Station System Powering ...](#)



With 90% of Dominica's electricity still generated from imported diesel in 2023, the Dominica Energy Storage Power Station System represents a critical step toward energy independence.



### [Dominica Energy Storage Power Station System Powering ...](#)

Summary: Explore how Dominica's cutting-edge energy storage solutions address renewable integration challenges while enhancing grid reliability. Discover technical innovations, real ...



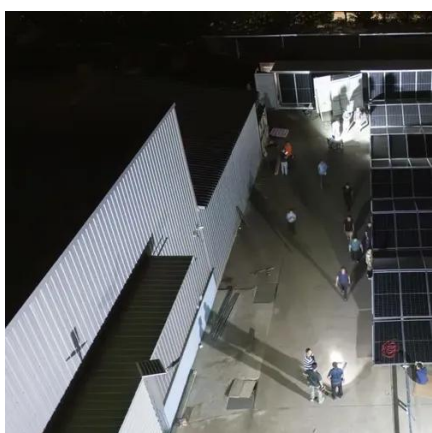
### [The distance between Dominica Energy Storage Power Station ...](#)

This article provides a comprehensive guide on battery storage power station (also known as energy storage power stations). These facilities play a crucial role in modern power grids by ...



### [Dominica New Energy Storage Power Station](#)

The pumped storage power station (PSPS) is a special power source that has flexible operation modes and multiple functions. With the rapid economic development in China, the energy ...



### [How many meters are the distances between energy storage stations](#)



Distances between energy storage stations range widely based on various factors, typically falling between 100 to 500 meters, local regulations, geographical considerations, and ...



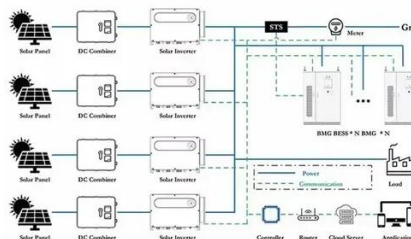
### [The distance between Dominica Energy Storage Power Station and the building](#)

This article provides a comprehensive guide on battery storage power station (also known as energy storage power stations). These facilities play a crucial role in modern power grids by ...



### [Code Corner: NFPA 855 ESS Unit Spacing ...](#)

In this edition of Code Corner, we talk about NFPA 855, Standard for the Installation of Stationary Energy Storage Systems. In ...



### [The fire separation distance of the lithium battery cabin is tripled](#)

In the fire safety management notice for electrochemical energy storage power stations released by the Inner Mongolia Autonomous Region, the fire separation distance between lithium ...



### [How many meters are the distances between ...](#)



1. Distances between energy storage stations range widely based on various factors, typically falling between 100 to 500 meters, ...



### [Tesla agrees to build China's largest grid-scale battery power plant](#)

"The grid-side energy storage power station is a 'smart regulator' for urban electricity, which can flexibly adjust grid resources," Tesla said on Weibo, according to a ...

### [THE ESSENTIAL GUIDE TO ENERGY STORAGE BUILDING ...](#)

Station Layout: Within the energy storage power station, office, accommodation, and duty areas should maintain necessary safety distances from battery prefabricated modules, with a ...



### [Energy storage power station setback distance](#)

In recent years, electrochemical energy storage has developed quickly and its scale has grown rapidly [3], [4]. Battery energy storage is widely used in power generation, transmission, ...

### [Fire protection distance between energy storage container ...](#)



For example, the safety distance for large-scale energy storage from significant risk points (fire, explosion) is 50 meters, medium-scale is 50 meters, and small-scale is 50 meters;



### [Dominica Integrated Energy Storage Power Station Project](#)

How is Dominica transforming geothermal energy?  
"Dominica is making significant strides in geothermal energy, with innovative investments to deliver clean, low-cost electricity to its ...

### [Dominica's Energy Transformation: How BESS is ...](#)

From this perspective, the launch of the energy storage system in Dominica is not merely an engineering feat. It's a message to ...



### [Dominica's Renewable Energy Sector - DOM767](#)

While geothermal and hydroelectric power are central to Dominica's green energy strategy, solar and wind energy are increasingly adopted at the ...

### [Essential Safety Distances for Large-Scale Energy Storage ...](#)



Discover the key safety distance requirements for large-scale energy storage power stations. Learn about safe layouts, fire protection measures, and optimal equipment ...





## Contact Us

---

For inquiries, pricing, or partnerships:

<https://www.zawojcsolina.pl>

Phone: +48 22 173 6647

Email: [info@zawojcsolina.pl](mailto:info@zawojcsolina.pl)

Scan QR code for WhatsApp.

