



# Transmission nodes use New Zealand rack-mounted type





## Overview

---

The backbone of New Zealand's national grid is the network of 220 kV transmission lines in each of the North and South Islands, which links the major power stations and the country's major cities. Supplementing this are 110 kV, 66 kV and 50 kV transmission lines, which supply provincial towns and cities with electricity from the 220 kV grid, and also connect smaller power stations to th.

Buy quality rack mount power & power distribution units from 4Cabling with fast shipping New Zealand wide.

Buy quality rack mount power & power distribution units from 4Cabling with fast shipping New Zealand wide.

The transmission system is known as 'the grid'. Electricity is transported across New Zealand through the grid to local substations and then to homes and businesses. The national grid or transmission system transports electricity at high-voltage from power stations, where it is generated, to large.

The Outdoor Single Sector Node B base station is a low-cost unit designed in a small, fully environmental form-factor, suitable for deployment in either typical cellular sectored macro cells or indoor/outdoor micro cells. The IPWireless High-Capacity Rack Mount Node B uses a standard 19 inch rack.

The Network Diagrams include NIPS, SIPS, SPD Drawings and Substation Locators can be found using this link, they are maintained by the System Operator. Relay and Instrument Diagrams are for individual substations and show a high level of detail. These are available on our MyTranspower portal. Log.

RackPower is a New Zealand-based manufacturer specializing in high-quality Power Distribution Units (PDUs) for data centers, telecom networks, and industrial use. We're a leading provider of custom PDUs across Australasia and the Asia-Pacific region. Powering reliability, built on trust. Basic.

New Zealand's major transmission network. Generation and load centres are shown as blue and red circles respectively. The major AC transmission corridors are shown as black lines, with the HVDC Inter-Island as a dashed line. The National Grid is the nationwide system of electric power transmission.

Designed to house 19" and 21" telecommunications subracks and power



distribution equipment. Designed to house 19" and 21" telecommunications subracks and power distribution equipment. 600mm deep foot print, access from front and rear, 4 sets of equipment mounting rails, with various door options.



## Transmission nodes use New Zealand rack-mounted type



### [NC4000 Series Optical Nodes . CommScope](#)

The NC4000 optical node platform also supports next-generation architectures and technologies such as Node PON, Remote PHY, and more, providing a seamless migration to support ...

### [Understanding New Zealand's Electricity Network: A...](#)

In this blog, we'll explore the intricacies of New Zealand's electricity network and provide insights into its operation and future. The Structure of New Zealand's Electricity Network



### [Intel Rackmount Workstations . Puget Systems](#)

Looking to build a remote workstation or processing node? Puget Rackstations with Intel processors offer workstation-class hardware in ...

### **Transmission Rack**

Transmission racks & stands designed and developed to allow you to move and store transmissions with ease



### [Rack Mount Enclosures: The Ultimate Guide to ...](#)

This article provides a comprehensive overview of rack mount enclosures, the essential components for organizing, protecting, and ...



### [Getting the most out of a 4 rack mounted Nodes CPU's.](#)

We have a 4 node, dual Xeon Gold 12 core CPU, with 32 gig or ram, rack mounted computer. So all together with all of the noes we have 96 cores, to process our FEA solves with.



### [Transmission Racks -- B& R Enclosures](#)

Racks for the Telecommunications Exchange Environment. Designed for installation inside telephone exchanges, to house standard telecommunications equipment and accessories.

...



### [Rack Mount Power Units , Power Rails , Power Distribution Units](#)



Buy quality rack mount power & power distribution units from 4Cabling with fast shipping New Zealand wide.



### APRComplete

New Zealand's HVAC transmission network supplies most of the major load centres, and consists of a grid backbone of 220 kV transmission lines stretching nearly the full length of each island.

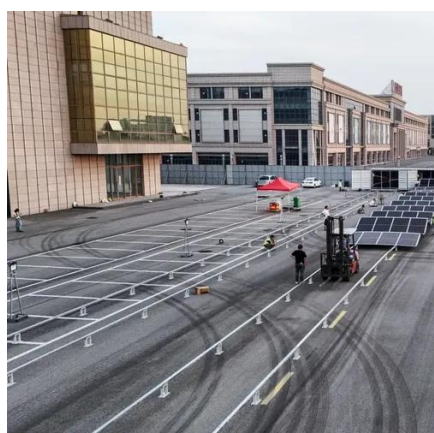
[Rack mounting tips and info / tutorial : r/homelab](https://www.reddit.com/r/homelab)

There are adapter plates to mount 19" gear in 23" racks. In a past life I spent time in telco CO's and saw lots of "data" gear installed in the CO racks ...



[An overview of the transmission and distribution network of New Zealand](#)

Almost all consumer premises in New Zealand are connected to a distribution network. There are also some generators, known as embedded generators, which are linked ...



### Transmission



The grid is made up of over 11,000 kilometres of high-voltage transmission lines, 25,000 pylons that hold them, and 170 substations. Electricity is transported at high voltage (up to 220,000 ...



### [Transmission , Electricity Authority](#)

Electricity is transported at high voltage (up to 220,000 volts) through a high-voltage alternating current system around New Zealand. To transfer electricity between the North and South ...



### [Blade Servers vs Rack Servers: A Data Center Decision Guide](#)

Let's go over the pros and cons of blade servers and rack servers to help you decide which type of server is best for your business.



### [Grid capability and configuration](#)

On This Page  
Interconnection Asset Reports  
Grid Asset Updates  
Special Protection Schemes  
Network Diagrams  
Relay and Instrument Diagrams  
Single Line Diagrams  
Our electricity transmission network includes a number of special protection schemes. Our latest information on each scheme is available here. See more on [transpower .nz](#) [rackpower .nz](#)



## **Power Distribution Units , RackPower , Rack ...**



RackPower is a New Zealand-based manufacturer specializing in high-quality Power Distribution Units (PDUs) for data centers, telecom networks, and ...

## Types of Server Rack

This post provides a detailed introduction to network cabinets, their types, features, and several popular Gcabling server racks.



48V 100Ah

## [Power Distribution Units , RackPower , Rack Mounted Power ...](#)

RackPower is a New Zealand-based manufacturer specializing in high-quality Power Distribution Units (PDUs) for data centers, telecom networks, and industrial use. We're a leading provider ...

## [National Grid \(New Zealand\)](#)

OverviewAC transmission networkHistoryHVDC LinkExternal links

The backbone of New Zealand's national grid is the network of 220 kV transmission lines in each of the North and South Islands, which links the major power stations and the country's major cities. Supplementing this are 110 kV, 66 kV and 50 kV transmission lines, which supply provincial towns and cities with electricity from the 220 kV grid, and also connect smaller power stations to th...



## Transmission

The grid is made up of over 11,000 kilometres of



high-voltage transmission lines, 25,000 pylons that hold them, and 170 substations. Electricity is ...



### [Network+ Chapter 2 Review Flashcards , Quizlet](#)

Study with Quizlet and memorize flashcards containing terms like If you're shopping for a rack switch, what component on the switch tells you it can be mounted to a rack? Large fans AC ...



### [Wall Mount Network Cabinets](#)

Learn how Legrand Wall-Mount Cabinets and Racks are designed for premium floor space environments and for a wide variety of applications.

### **NodeB\_1**

The Rack Mounted Node Bs additionally support Transmit Diversity and a high power Power Amplifier to support an increased coverage area and higher data-rates at cell edges.



### [National Grid \(New Zealand\)](#)

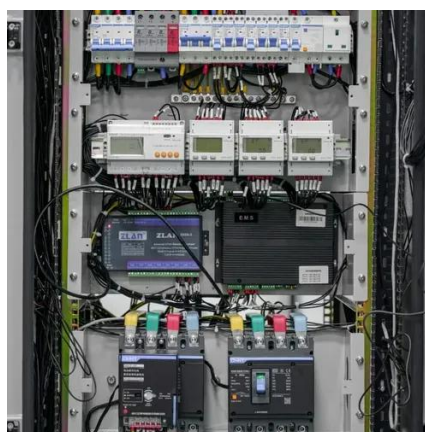


This project involved a 220 kV switching station at Drury, upgrading the existing 220 kV Otahuhu to Whakamaru C line, new capacitors at Otahuhu, Penrose, and Hepburn Road substations, ...



## 2610 Install Guide

See "Note on 1000Base-T Cable Requirements" on page B-2 for more information on 1000Base-T cabling. For 10 Mbps connections to the ports, you can use Category 3, 4, or 5 unshielded ...



## [Grid capability and configuration](#)

Our electricity transmission network includes a number of special protection schemes. Our latest information on each scheme is available here. The Network Diagrams ...



## Contact Us

---

For inquiries, pricing, or partnerships:

<https://www.zawojcsolina.pl>

Phone: +48 22 173 6647

Email: [info@zawojcsolina.pl](mailto:info@zawojcsolina.pl)

Scan QR code for WhatsApp.

