



Upgraded version of communication power cabinet with 800mm depth





Overview

What is a 42U navepoint commercial server cabinet?

The 42U NavePoint Commercial Series network server cabinets have capacity and quality --everything it takes to get the job done right for your high-density applications that rack and store a range of 19-inch equipment like servers, patch panels, PDUs, routers, and more.

What is a 42U server rack cabinet?

Our 42U server rack cabinet has a glass front and perforated French rear doors to facilitate airflow. Quick-release, lockable side panels allow for easy access, while increased depth allows for cable management and PDU installation behind equipment.

Are navepoint cabinets heavy duty?

The Commercial Series cabinets define heavy duty - the 42U model holds a static load of 3000 lbs (stationary). The NavePoint Commercial Series cabinets come pre-assembled for easy setup and include pre-installed heavy-duty locking casters for mobility, and leveling feet for use when the fully racked cabinet needs to stay in place.

Are navepoint cabinets pre-assembled?

The NavePoint Commercial Series cabinets come pre-assembled for easy setup and include pre-installed heavy-duty locking casters for mobility, and leveling feet for use when the fully racked cabinet needs to stay in place. These network enclosures feature adjustable square untethered cage nut opening mounting rails with u-markings.



Upgraded version of communication power cabinet with 800mm depth



[Outdoor Communication Cabinets and Power ...](#)

Outdoor cabinets ensure network stability and protect communication equipment with reliable power management.

[Server Racks & Data Cabinets 800mm Wide x 800mm Deep](#)

Discover a range of 800mm wide x 800mm deep data cabinets and racks from leading brands at Comms Express. Optimise your data centre with high-quality cabinets and racks designed for ...



[48U Extra-Deep 800mm Wide Server Rack Enclosure , Eaton](#)

48U deep extra-wide rack enclosure houses, organizes and secures network equipment with extra room on the sides for cable management and PDU mounting.



[42U Server Rack Cabinet, 800mm depth, Glass ...](#)

The cabinet also incorporated full-height wire management rails, which ...



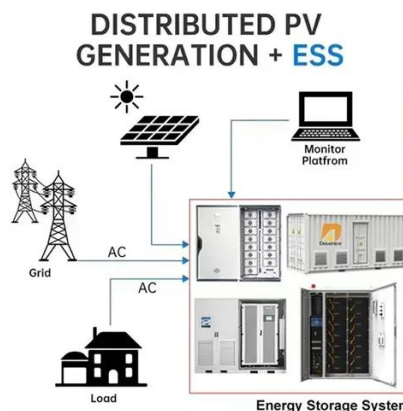
[42U Server Rack Cabinet, 800mm depth, Glass door and Perf.](#)

The cabinet also incorporated full-height wire management rails, which made it easier to finish a neat and clean installation. The mounting rail depth is marked and adjustable in 10 mm ...



[Server Racks & Data Cabinets 800mm Wide x ...](#)

Discover a range of 800mm wide x 800mm deep data cabinets and racks from leading brands at Comms Express. Optimise your data centre with ...



[42U Floor Standing Server Rack Cabinet](#)

Why Choose a 42U Server Rack Cabinet? The 42U server rack cabinet offers ample space for network equipment, including servers, patch panels, and network switches. With dimensions of ...



[NavePoint 42U Server Rack Cabinet, 800mm ...](#)



Buy NavePoint 42U Server Rack Cabinet, 800mm depth, Cable Management Top, Glass Door (Commercial Series): 42U Cabinets



[NEMA 4 NEMA 4X Outdoor Server Cabinet, 16U, 800mm Wide x 800mm ...](#)

Being designed to accommodate the weather protection of your choice, the outdoor server rack enclosures are available in NEMA 3R, 4, or 4X configurations. AZE designs and manufactures ...



Server Racks

Our server cabinet range is offered as a one-box solution including most of the items you will need or want in a typical installation. Our racks include shelves, fans, quality welded construction, ...



[Data Cabinets & Data Racks , Comms Express](#)

View our range of cost effective floor standing Data Cabinets & Data Racks available at Comms Express - Available Buy Online Today with Free ...



[SRF 800 Floor Standing Rack Cabinets ? -- SysRacks](#)



Sysracks' SRF800 is a series of top-notch floor cabinets ranging from 18U to 42U height and 800 mm or 32 inches depth. They are ideal for storing IT and telecom equipment in offices, ...



[600 800mm Depth Floor Standing Network ...](#)

600 800mm Depth Floor Standing Network Server Rack Cabinet, Find Details and Price about 600mm Depth Server Rack 600mm ...



[42U Floor Standing Server Rack Cabinet](#)

Why Choose a 42U Server Rack Cabinet? The 42U server rack cabinet offers ample space for network equipment, including servers, patch ...

Outdoor Cabinet BESS
50 kWh/500 kWh Battery Storage System
Industrial and Commercial Energy Storage

- All in One**
Integrating battery packs
- High-capacity**
50-500kWh
- Degree of Protection**
IP54
- Operating Temperature Range**
-20~60°C (Derating above 50 °C)
- Intelligent Integration**
Integrated photovoltaic storage cabinet
- Rated AC Power**
50-100kW
- Altitude**
3000m(>3000m derating)

[Cabinets & Racks by Size , Comms Express](#)

Explore the range of Cabinets & Racks by Size available at Comms Express, Networking Reseller - Free Delivery Available To Buy Online Today.



[Premium-Line Enhanced Network Server ...](#)



up to 1500 kgs static loading capacity with adjustable feet "U" mark mounting rail for clear and easy identification 4pcs of M12 adjustable feet and 4pcs ...



ER8282

ER8282 is an ideal choice for tight spaces in SMBs, with 800mm wide & shallow depth, ventilated doors with 81% perforation and load ratings static 1200kg & dynamic 600kg. This rack comes ...

[48U Extra-Deep 800mm Wide Server Rack Enclosure , Eaton](#)

48U deep extra-wide rack enclosure houses, organizes and secures network equipment with extra room on the sides for cable management and PDU mounting.



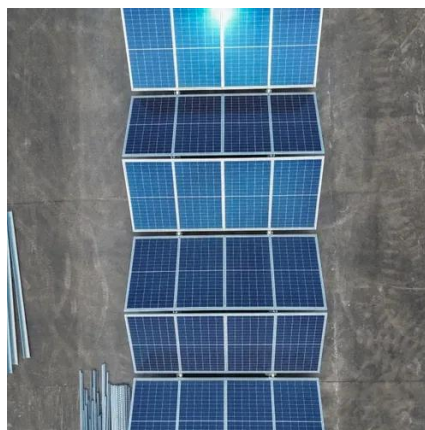
[Sturdx 42U Floor Standing Server Rack Cabinet](#)

The 42U server rack cabinet offers an efficient use of space, with 800mm width and 1000mm depth, providing ample room for a variety of IT ...

[NavePoint 42U Server Rack Cabinet, 800mm ...](#)



Buy NavePoint 42U Server Rack Cabinet, 800mm depth, Fan Compatible Top, Perforated Door (Commercial Series): 42U Cabinets



[NavePoint 42U Server Rack Cabinet, 800mm ...](#)

The 42U NavePoint Commercial Series network server cabinets have capacity and quality --everything it takes to get the job done right for your ...



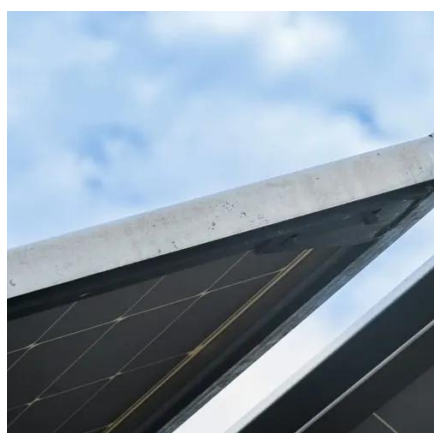
[45U 800mm Wide x 800mm Wide Cabinets/Racks . Comms ...](#)

Explore the range of 45U 800mm Wide x 800mm Deep Cabinets/Racks available at Comms Express, Networking Reseller - Free Delivery Available To Buy Online Today.



[NavePoint 42U Server Rack Cabinet, 800mm depth, Cable ...](#)

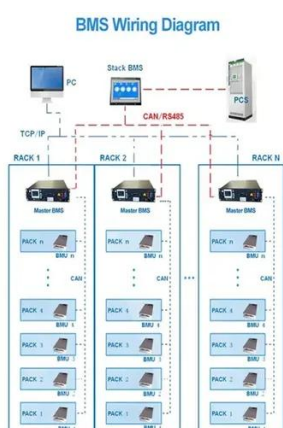
The 42U NavePoint Commercial Series network server cabinets have capacity and quality --everything it takes to get the job done right for your high-density applications that rack and ...



[ShowMeCables 42U Server Rack Cabinet, 800mm depth, ...](#)



42U Server Rack Cabinet, 800mm Depth, Glass Door and Perforated Rear French Doors, Cable Management Top The ShowMeCables SM42USRC800GDCM 42U commercial network ...



[ShowMeCables 42U Server Rack Cabinet, ...](#)

42U Server Rack Cabinet, 800mm Depth, Glass Door and Perforated Rear French Doors, Cable Management Top The ShowMeCables ...

[Premium-Line Enhanced Network Server Cabinet](#)

up to 1500 kgs static loading capacity with adjustable feet "U" mark mounting rail for clear and easy identification 4pcs of M12 adjustable feet and 4pcs of heavy duty castors included 40sets ...



[SRF 800 Floor Standing Rack Cabinets ? -- ...](#)

Syracks' SRF800 is a series of top-notch floor cabinets ranging from 18U to 42U height and 800 mm or 32 inches depth. They are ideal for storing IT ...



[27u Standard Network Rack Enclosed 800mm Depth with ...](#)



27u Standard Network Rack Enclosed 800mm Depth with Cooling Fan & PDU, Find Details and Price about Network Cabinet Wall Mount Cabinet from 27u Standard Network ...





Contact Us

For inquiries, pricing, or partnerships:

<https://www.zawojcsolina.pl>

Phone: +48 22 173 6647

Email: info@zawojcsolina.pl

Scan QR code for WhatsApp.

