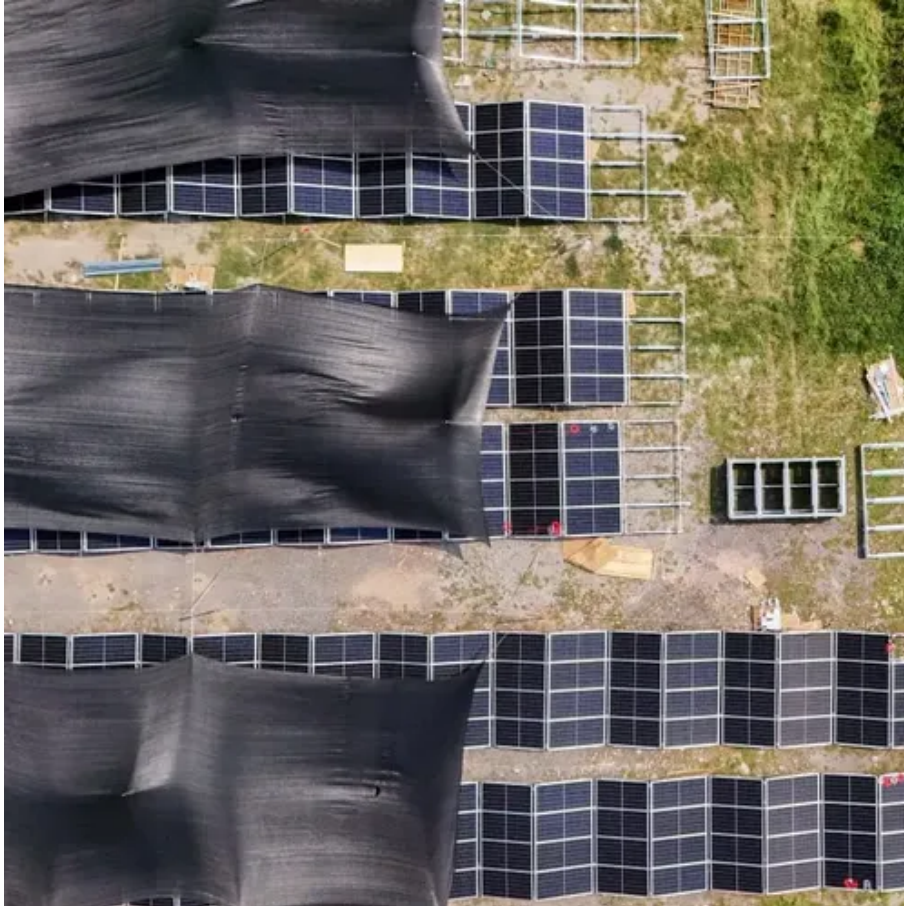




What is the end plate inside the battery cabinet called





Overview

Battery Negative Plate: The negative plate contains a metal grid with spongy lead active material. **Battery Separator:** The separator is a polyethylene material that separates the positive plates from the negative plates to provide an efficient flow of electrical.

Battery Negative Plate: The negative plate contains a metal grid with spongy lead active material. **Battery Separator:** The separator is a polyethylene material that separates the positive plates from the negative plates to provide an efficient flow of electrical.

Battery Terminal/Bushing: The terminals are connected to the positive strap and the negative strap of the end cells, and are the interfacing point between the battery and the vehicle's electrical system. **Battery Acid:** The acid is a high-purity solution of sulfuric acid and water. **Cast-on Strap for.**

Battery Case: The battery case is typically made of hard plastic and houses all the internal components of the car battery. It is designed to be durable and resistant to vibration and impact. **2. Positive Terminal:** The positive terminal is a metal post or stud located on top of the battery case. It.

Points where the battery connects to the car's electrical system, typically marked as positive (+) and negative (-). A mixture of sulfuric acid and water inside the battery that helps conduct electricity. Lead-based components inside the battery that store energy. They are arranged in a grid.

The key units that contribute to the operation of this system include the positive terminal, negative terminal, electrolyte, and plates. Each plays a significant role in ensuring that the vehicle starts and functions correctly. The positive and negative terminals connect to the vehicle's electrical.

One of the most important parts of a battery is the anode, which is the positive terminal. This is where electrons leave the battery during the discharge process. The anode is usually made of a metal or a conductive material that is capable of hosting a chemical reaction that produces electrons.

Yet, inside a battery is a complex world full of chemistry, engineering, safety



systems, and even some innovation magic. Let's take a deep dive into the heart of the battery—piece by piece, layer by layer—and discover why what's inside a battery truly matters. Part 1. Why understanding the inside. What are the parts of a car battery?

Plates: The car battery contains a series of lead plates inside the battery case. These plates are submerged in the electrolyte and have a positive and negative charge, allowing for the flow of electrons and the storage of energy. **6. Separator:** The plates in a car battery are separated by special materials called separators.

What are battery plates made of?

The battery plates are the core elements responsible for the chemical reaction that generates power. These plates are made from lead and lead oxide and are arranged in the battery's cells. They form the positive and negative terminals. The positive plates are coated with lead dioxide, while the negative plates are composed of pure lead.

What is inside a battery case?

Inside the battery case, there is a series of compartments and channels that are designed to hold and secure the individual battery cells. These compartments help to maintain the structural integrity of the battery and prevent the cells from moving or vibrating during use.

Which part of a battery is a positive terminal?

One of the most important parts of a battery is the anode, which is the positive terminal. This is where electrons leave the battery during the discharge process. The anode is usually made of a metal or a conductive material that is capable of hosting a chemical reaction that produces electrons.



What is the end plate inside the battery cabinet called



[Battery Posts and Terminals Guide: Types, ...](#)

Comprehensive guide to battery posts & terminals: Learn types, materials, corrosion prevention & replacement techniques. Expert ...

[Parts of a Car Battery Diagram and Their Functions Explained](#)

The lead plates inside the cells, typically arranged in pairs, are essential for energy storage. The plates are made of a lead alloy and work with the electrolyte to create the chemical reactions ...

- ✓ LIQUID/AIR COOLING
- ✓ INTELLIGENT INTEGRATION
- ✓ PROTECTION IP54/IP55
- ✓ BATTERY /6000 CYCLES



[What Is the End of a Battery? A Complete Guide to Battery ...](#)

Battery terminals are the two metal contact points located at opposite ends of a battery: the positive terminal and the negative terminal. These terminals not only allow energy ...

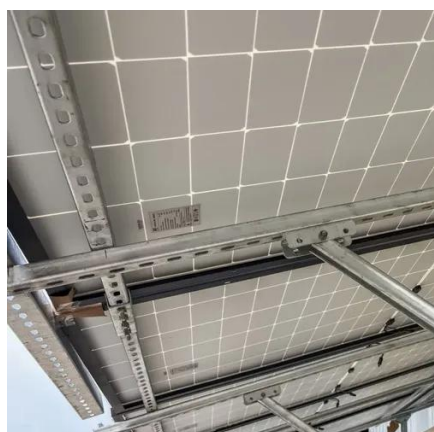
[Car Battery Parts Diagram and Functionality ...](#)

Battery Plates: Inside the battery, you'll find lead plates soaked in an electrolyte solution. These plates are responsible for storing and releasing ...



[What's Inside a Battery? How Does It Work?](#)

Don't overlook the separator--it's one of the most critical layers inside a battery. It prevents direct contact between the anode and cathode while allowing ion flow.



[What's Inside a Battery? How Does It Work?](#)

Don't overlook the separator--it's one of the most critical layers inside a battery. It prevents direct contact between the anode and ...



[Kitchen Cabinet Parts Terminology » Granite & Quartz Countertops](#)

Base Cabinet - any cabinet type designed to be installed directly on the floor. Fillers - fillers are used between ...



[Energy Storage Box End Plates: The Unsung Heroes of Modern Battery](#)



Meet the energy storage box end plate - the Clark Kent of battery components that's secretly doing superhero work. While engineers might geek out over battery chemistry, ...



[Battery Cutaway , What's Inside a Car Battery?](#)

Battery Terminal/Bushing: The terminals are connected to the positive strap and the negative strap of the end cells, and are the interfacing point between the battery and the vehicle's ...

[The Anatomy of a Battery](#)

This is the positive end of the battery, or cathode. The completely flat end of the battery has a minus (-) sign next to it. This is the negative end of a ...



[What are the parts of a cabinet called?](#)

What are sections of a cabinet called? Face Frame - The structural portion of the cabinet to which doors are attached, consisting of both rails and stiles. End Panel - The side of the cabinet that ...

[How Do Batteries Work? Parts, Types & Terminology \(W/ Diagram\)](#)



How Batteries Work A typical battery is composed of one or more cells that have a cathode (positive terminal) on one end and an anode (negative terminal) on the other end. ...

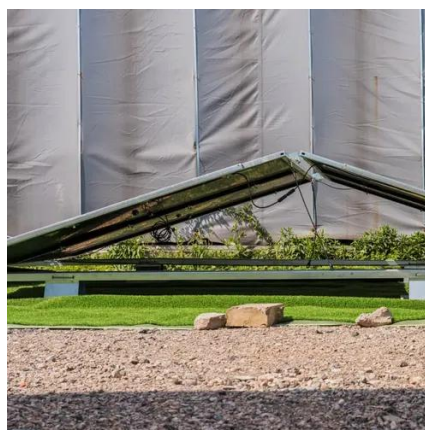


Battery Structure

Battery Terminal/Bushing: The terminals are connected to the positive strap and the negative strap of the end cells, and are the interfacing point ...

[Car Battery Parts Diagram and Functionality Overview](#)

Battery Plates: Inside the battery, you'll find lead plates soaked in an electrolyte solution. These plates are responsible for storing and releasing electrical energy.



[Car Battery Parts Diagram and Functionality ...](#)

The main components include the positive terminal and the negative terminal, which allow electricity to flow into and out of the battery. These ...



[What's Inside a Battery? How Does It Work?](#)



Explore what's inside a battery, how it works, and why it matters. Learn about battery parts, safety, and recycling--all in simple, easy-to-understand terms.



[What is the End of a Battery? Understanding ...](#)

However, in the world of battery technology, the end of a battery can mean something very specific: the battery terminals. The end ...



[Eaton-Battery-Handbook-BAT11LTA.PDF](#)

A VRLA battery is distinguished from a flooded-cell battery by the rate at which oxygen is evolved from the positive plate and diffused to the negative plate, ultimately forming water.



[Understanding the Anatomy of a Battery](#)

The vent is an essential part of a battery as it helps release gas and prevent the build-up of pressure inside the battery. It is usually located on top of the battery and is designed to allow ...



[Understanding the Anatomy of a Battery](#)



The vent is an essential part of a battery as it helps release gas and prevent the build-up of pressure inside the battery. It is usually located on top of the battery and is designed to allow ...



[The Essential Guide to Understanding Car Battery Parts with ...](#)

Plates: The car battery contains a series of lead plates inside the battery case. These plates are submerged in the electrolyte and have a positive and negative charge, allowing for the flow of ...

[Common Kitchen Cabinet Terminology , Glossary ...](#)

Learn the most popular cabinetry terms used during a kitchen or bathroom renovation with our cabinet glossary.



Battery Structure

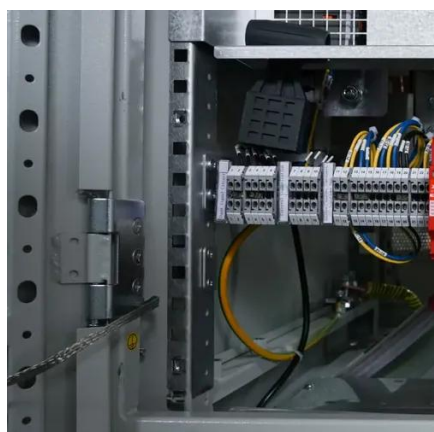
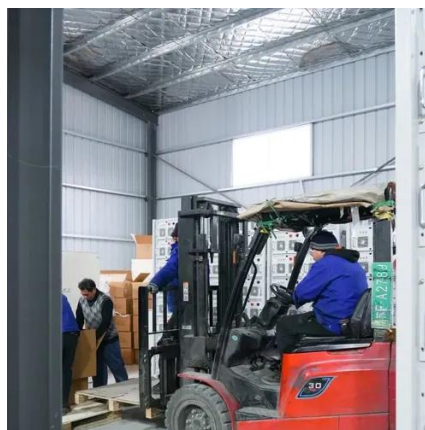
Battery Terminal/Bushing: The terminals are connected to the positive strap and the negative strap of the end cells, and are the interfacing point between the battery and the vehicle's ...



[Why is it always the negative end of a battery that corrodes?](#)



Here's why this happens: Hydrogen Evolution Reaction: During the discharge and charging processes of a lead-acid battery, a chemical reaction called the Hydrogen Evolution Reaction ...



[Energy Storage Box End Plates: The Unsung Heroes of Modern ...](#)

Meet the energy storage box end plate - the Clark Kent of battery components that's secretly doing superhero work. While engineers might geek out over battery chemistry, ...

[What Is Inside a Car Battery?](#)

Within the battery case, the plates are organized into six individual compartments, each called a cell. Each of these six cells is capable of generating approximately 2.1 volts ...



[Cabinetry Glossary of Terms](#)

Back Plate - Sometimes called escutcheons, a back plate is the circular or curved plate (traditionally brass) that sits between the handle, pull, knob ...

[Parts of a Cabinet: Cabinet Anatomy](#)



Learn about the different parts of kitchen cabinets and how they contribute to the cabinet's overall construction.



Cabinet Terminology

Often referred to as European-style cabinets. Components, doors and drawers are applied to the inside of the box thus eliminating the traditional face frame. A furniture-grade decorative leg ...



Contact Us

For inquiries, pricing, or partnerships:

<https://www.zawojcsolina.pl>

Phone: +48 22 173 6647

Email: info@zawojcsolina.pl

Scan QR code for WhatsApp.

