



# What is the industrial voltage of portable power supply





## Overview

---

How do industrial power supplies work?

The industrial power supplies use rectifiers to convert the alternating current (AC) power from the primary grid into the required direct current (DC) power. The output is then filtered for stability. A regulated power supply maintains a steady output voltage, with a feedback loop ensuring consistency.

What are the different types of industrial power supplies?

Beyond essential functions, industrial power supplies often include overvoltage, overcurrent, and thermal protection to safeguard equipment and the power supply from damage. Industries use mainly three types of power supplies: a) Regulated linear power supplies, b) Switch mode power supplies, and c) Programmable power supplies.

Why are power supplies important?

Power supplies are essential for industrial operations. By regulating voltage and current, they protect equipment from overloads, spikes, and surges. Power supplies are a crucial part of automation systems, manufacturing equipment, sensors, and controllers as they safeguard against electrical faults that may damage machinery and lead to downtimes.

What is a standard power supply voltage in China?

The standard power voltage in Mainland China, Hong Kong, and Macau is 220 Volts AC with a frequency of 50 Hz, while in Taiwan, electronic devices typically operate on a power supply voltage of 110V/60Hz. The electrical current in China is similar to what you'll find in most of Europe and Australia.



## What is the industrial voltage of portable power supply

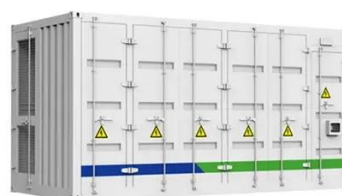


### [A comprehensive guide on industrial power supplies](#)

This guide provides expert guidance on choosing the right power supply for industrial operations, ensuring machinery safety and maximizing uptime, and offers detailed information on different ...

### [Control Supply Voltage used in Industry](#)

From factories to power plants, control supply voltage is used to regulate the flow of electricity to various components, such as motors, ...



### [A comprehensive guide on industrial power ...](#)

This guide provides expert guidance on choosing the right power supply for industrial operations, ensuring machinery safety and maximizing uptime, ...

### [Voltage and Frequency By Country](#)

Chart Provides Voltage/Frequency for All Countries.



### [What Power Plugs Used in China?](#)

Approximately 30 countries, mainly in North America, utilize a voltage range of 110V - 230V. The subsequent list provides information ...



### [Selecting Power Supplies for Industrial Applications](#)

For example, although most PLCs define a supply voltage of 24 VDC, they can typically withstand a variation, including ripple, of around  $\pm 20$  percent. Some power supplies ...



### [Understanding Power Supply Voltages , Bravo ...](#)

Want to learn about power supply voltage? Our complete guide will cover everything you need to know about how voltages work - ...



### [China Voltage and Power Plug Guide](#)



Dual voltage devices can work under different voltage standards, typically labeled "100-240V" or "110-240V". Identification method: Check labels on device power adapters or chargers - if ...



### [What Power Plugs Used in China?](#)

Approximately 30 countries, mainly in North America, utilize a voltage range of 110V - 230V. The subsequent list provides information on the electricity voltage utilized in ...

### [Standard and Common Voltage Levels in the ...](#)

In Three Phase Four Wire Wye power distribution system, three wires plus neutral (3-Phase, 4-wires Wye- 4WY) configuration is used in ...



### [U.S.A. and Global AC Voltage & Frequency \(Hz\) Chart](#)

Whether you're an owner of a foreign-made generator or just a world traveler, an understanding of international electricity standards can come in handy.

### [Industrial Portable Power Supply , Industrial ...](#)

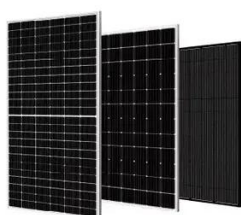


From 1500 to 3000 watts. This unit provides 24 VDC Industrial compliant input (9-36 or 18-36VDC Range) power with a multitude of output ...



### [Ultimate Guide to Power Supply for Industrial ...](#)

Selecting the right power supply is essential for reliable operation in industrial test equipment. This guide provides in-depth ...



### [Industrial Portable Power Supply , Industrial Portable Custom Power](#)

From 1500 to 3000 watts. This unit provides 24 VDC Industrial compliant input (9-36 or 18-36VDC Range) power with a multitude of output possibilities to include custom systems as required. ...



### [The Best Power Supply For Robots: ...](#)

Looking for the best power supply for robots? At Bravo Electro, we've created a buyer's guide for the most common robotics use cases.



### [Selecting Power Supplies for Industrial ...](#)



For example, although most PLCs define a supply voltage of 24 VDC, they can typically withstand a variation, including ripple, of ...

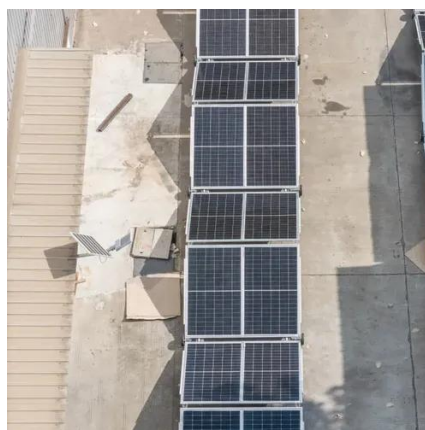


### [Typical Output Voltages for Industrial Power Supplies](#)

120V AC and 240V AC: These are standard alternating current (AC) output voltages for industrial power supplies that need to provide power to equipment designed for ...

### [Ultimate Guide to Power Supply for Industrial Applications](#)

Selecting the right power supply is essential for reliable operation in industrial test equipment. This guide provides in-depth insights into managing noise, achieving EMC ...



### [Typical Output Voltages for Industrial Power Supplies](#)

Industrial power supplies are critical components in a wide range of applications, from manufacturing and automation to telecommunications and medical equipment. ...



## [POWER SUPPLY DESIGN BASICS](#)



The design of stabilized supplies has been simplified dramatically by the introduction of voltage regulator ICs such as the L78xx and L79xx - three-terminal series regulators which provide a ...



### [China Voltage and Power Plug Guide](#)

Dual voltage devices can work under different voltage standards, typically labeled "100-240V" or "110-240V". Identification method: Check labels on ...

### [Input and output power in welding](#)

What is Input Power In Welding? Input power, primary power, or primary voltage is the electrical energy supplied to your welding ...



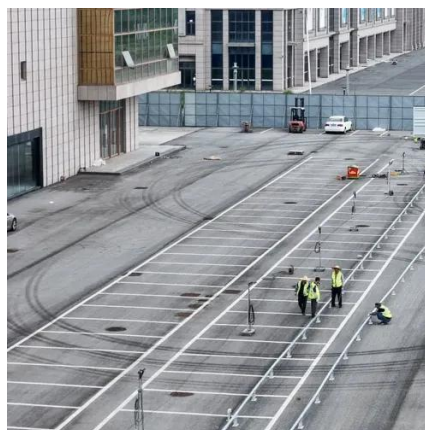
### [Variable Power Supply \(Adjustable Power ...](#)

Find the perfect variable/adjustable power supply for your testing needs. Get precise, adjustable voltage and current for prototyping, troubleshooting, ...

### [Introduction to 480V 3-phase Power](#)



Three-phase Wiring Configurations A standard three-phase power supply in the U.S. has a voltage rating of 480 V. This voltage drops ...



### [Industrial Power Supplies , DIN Rail & Control Panel Power , RSP Supply](#)

An industrial power supply converts incoming electrical power into a regulated output voltage suitable for powering industrial equipment, control systems, and automation devices.

### [Industrial Portable Power Supply A Comprehensive Guide](#)

An industrial portable power supply is a compact, mobile device designed to provide electrical power in locations where conventional power sources are unavailable or ...



### [What is a DC Power Supply? , Tektronix](#)

What is a DC power supply? Learn how it works, key types, specs, and tips for choosing, using, and troubleshooting power supplies in ...



## Contact Us

---

For inquiries, pricing, or partnerships:

<https://www.zawojcsolina.pl>

Phone: +48 22 173 6647

Email: [info@zawojcsolina.pl](mailto:info@zawojcsolina.pl)

Scan QR code for WhatsApp.

