



# What is the minimum volt of the iron storage battery





## Overview

---

The lithium iron phosphate battery (LiFePO<sub>4</sub> battery) or LFP battery (lithium ferrophosphate) is a type of using (LiFePO<sub>4</sub>) as the material, and a with a metallic backing as the . Because of their low cost, high safety, low toxicity, long cycle life and other factors, LFP batteries are finding a number o.

The minimum voltage of a LiFePO<sub>4</sub> cell is typically around 2.5 volts. Operating the cell below this threshold can result in irreversible damage and significantly reduce its lifespan. It is crucial to monitor the voltage levels and prevent excessive discharge to maintain the health of.

The minimum voltage of a LiFePO<sub>4</sub> cell is typically around 2.5 volts. Operating the cell below this threshold can result in irreversible damage and significantly reduce its lifespan. It is crucial to monitor the voltage levels and prevent excessive discharge to maintain the health of.

What is the minimum volt of the iron clad energy storage battery?

1. The minimum voltage of iron clad energy storage batteries typically ranges from 1.2 to 1.5 volts, depending on specific designs and applications. 2. The performance characteristics and safety standards must align to optimize.

Storage Voltage- This is the ideal voltage in which the battery must be stored if not in use for a prolonged time. Storage voltage ensures good battery health and reduces capacity loss. Fully Charged Voltage- It ranges at 3.65V and it is the maximum voltage for charging. Charging beyond this level.

Periodically check batteries and battery packs to ensure that their open circuit voltage (OCV) is sufficiently high. Use the table below to determine the recommended minimum storage voltage. If the voltage falls below this value during a maintenance check, it is recommended that the battery be.

Renowned for stability, safety, and long cycle life, LiFePO<sub>4</sub> batteries offer a nominal voltage of 3.2 volts per cell. This differs from traditional lithium-ion batteries, which typically have a nominal value of around 3.6 to 3.7 volts per cell. The lower voltage range of LiFePO<sub>4</sub> batteries, combined.

This guide dives deep into the LiFePO<sub>4</sub> battery voltage-SOC (State of Charge) chart, charging best practices, and storage must-knows, giving you everything you



need to make your lithium iron phosphate battery last. What Are LiFePO4 Batteries?

Core Benefits Explained A LiFePO4 battery is a type of.

A single LiFePO4 cell maintains a nominal voltage of 3.2V, with an operating window that includes: · Fully charged state: 3.65V · Normal operating range: 3.2V - 3.4V · Discharge cut-off: 2.5V We need to distinguish between nominal and actual voltage in LiFePO4 batteries. While the nominal voltage.



## What is the minimum volt of the iron storage battery



### [The Ultimate Guide to LiFePO4 Lithium Battery ...](#)

This guide breaks down LiFePO4 lithium battery voltage, showing you exactly how to read and use a voltage chart for maximum efficiency.

### [Understanding the Voltage of LiFePO4 Cells: A ...](#)

The minimum voltage of a LiFePO4 cell is typically around 2.5 volts. Operating the cell below this threshold can result in irreversible damage ...

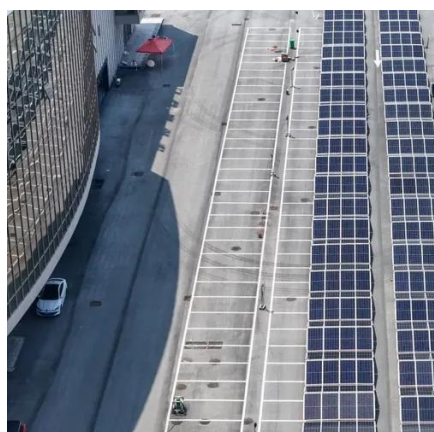
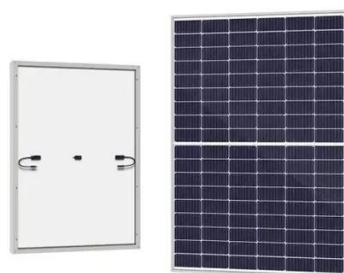


### [Guide to LiFePO4 Voltage Chart](#)

Offering a nominal voltage of 51.2V and a fully charged range of up to 58.4V, these battery banks support higher power loads with minimal energy loss. Their ability to handle ...

### [LiFePO4 Battery Guide: Voltage Chart, Charging](#)

Nominal Voltage: 3.2V (per cell). Capacity Range: Typically 50Ah-300Ah, fitting various devices.  
Depth of Discharge: Safe to drain up ...

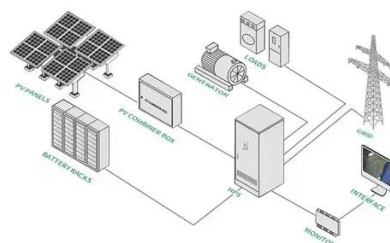


### [Ultimate Guide to Lithium-Ion Battery Voltage ...](#)

Explore the lithium-ion battery voltage chart for 12V, 24V, and 48V systems. Learn charging ranges, SOC levels, and tips to extend battery life.

### [How low can I discharge a EG4 or SOK 48V battery?](#)

The minimum discharge voltage of a single LiFePO4 battery with reference to 3.2V is between 2V and 2.5V. Maybe the minimum discharge voltage of a 48V battery is between ...



### [Lithium Battery Voltage Chart: 3.2V, 3.7V, 4.2V ...](#)

A battery voltage chart is a critical tool for understanding how different lithium-ion batteries perform under specific conditions. It displays ...

### [Understanding the Voltage of LiFePO4 Cells: A Comprehensive ...](#)



The minimum voltage of a LiFePO4 cell is typically around 2.5 volts. Operating the cell below this threshold can result in irreversible damage and significantly reduce its lifespan. It is crucial to ...



### [Complete Guide to 6S LiPo Batteries for RC ...](#)

By understanding their voltage limits (especially the minimum!), capacity, C-ratings, and the importance of proper charging ...



### [Ultimate Guide to LiFePO4 Voltage Chart](#)

The voltage drops in relation to battery capacity are shown in the 12V LiFePO4 battery voltage chart below. Either buy two identical 12V LiFePO4 batteries and link them in ...



### [Lithium iron phosphate battery](#)

The lithium iron phosphate battery (LiFePO 4 battery) or LFP battery (lithium ferrophosphate) is a type of lithium-ion battery using lithium iron phosphate (LiFePO 4) as the catho



### [LiFePO4 Battery Voltage Chart: Your Ultimate Guide](#)



Suppose you plan to store your LiFePO4 battery for an extended period. In that case, monitoring its voltage regularly and ...



### [The Definitive Guide to LiFePO4 Lithium Battery ...](#)

In this in-depth guide, we'll explore the details of LiFePO4 lithium battery voltage, and how to read and effectively use a LiFePO4 ...



### [Understanding the Voltage of LiFePO4 Battery: A ...](#)

The minimum safe voltage for a LiFePO4 cell is typically 2.5V. Operating the battery below this voltage can cause irreversible damage and significantly reduce its lifespan.



### [Guide to LiFePO4 Voltage Chart](#)

Offering a nominal voltage of 51.2V and a fully charged range of up to 58.4V, these battery banks support higher power loads with ...



### [A Comprehensive Guide on How to Store LiFePO4 Batteries](#)



Disconnecting the [+] and [-] wires connected to the battery pack terminals is the proper way to turn off the battery pack. Unlike other battery types, lithium batteries do not ...



### [Lithium-Ion Information Guide , Houston, Texas USA](#)

This prevents the fuel gauge from showing an incorrect battery charge. Lithium-Ion Battery Storage The speed at which a Lithium-Ion battery ages is governed by temperature and the ...

### [Guide to LiFePO4 Voltage Chart](#)

What Is LiFePO4 Battery Voltage? LiFePO4 battery voltage refers to the electrical potential difference within Lithium Iron Phosphate ...



### [What is the minimum volt of the iron clad energy ...](#)

With regard to iron clad energy storage batteries, the minimum operational voltage is a critical parameter that determines ...



### [LiFePO4 Voltage Chart: A Comprehensive Guide](#)



The LiFePO4 Voltage Chart provides a comprehensive guide to understanding the voltage characteristics of LiFePO4 batteries and their corresponding capacities, charge cycles, ...



### [Ultimate Guide to LiFePO4 Voltage Chart](#)

For 12V LiFePO4 batteries, the minimum voltage damage is approximately 10V. The LiFePO4 battery is likely to suffer irreversible damage if it is discharged below the ...



### [A Comprehensive LiFePO4 Voltage Chart Guide for Off-Grid ...](#)

This comprehensive guide will demystify the LiFePO4 voltage chart, explaining how to interpret voltage levels, maximize battery life, and optimize your energy storage system's performance.



### [A Comprehensive LiFePO4 Voltage Chart Guide ...](#)

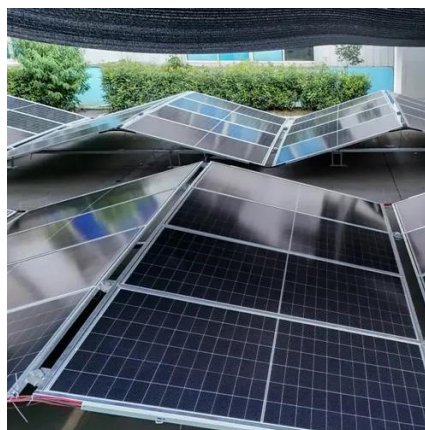
This comprehensive guide will demystify the LiFePO4 voltage chart, explaining how to interpret voltage levels, maximize battery life, and ...



### [ESS IRON FLOW BATTERIES](#)



Iron flow batteries have no fire, chemical or explosive risk, eliminating the need for fire suppression, secondary containment and hazmat requirements. In addition, ESS solutions are ...



### [Lithium iron phosphate battery](#)

OverviewHistorySpecificationsComparison with other battery typesUsesRecent developmentsSee also

The lithium iron phosphate battery (LiFePO<sub>4</sub> battery) or LFP battery (lithium ferrophosphate) is a type of lithium-ion battery using lithium iron phosphate (LiFePO<sub>4</sub>) as the cathode material, and a graphitic carbon electrode with a metallic backing as the anode. Because of their low cost, high safety, low toxicity, long cycle life and other factors, LFP batteries are finding a number o...

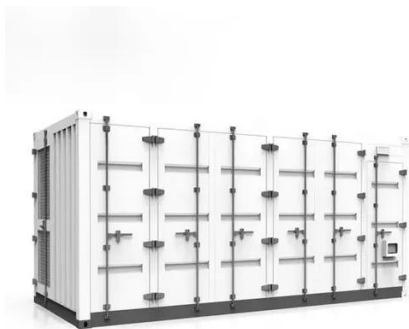
### [LiFePO<sub>4</sub> Battery Guide: Voltage Chart, Charging & Storage Tips](#)

Nominal Voltage: 3.2V (per cell). Capacity Range: Typically 50Ah-300Ah, fitting various devices.  
Depth of Discharge: Safe to drain up to 80%-100%, way better than lead ...



### [Understanding the Voltage of LiFePO<sub>4</sub> Battery: A ...](#)

The minimum safe voltage for a LiFePO<sub>4</sub> cell is typically 2.5V. Operating the battery below this voltage can cause irreversible damage and significantly ...



### [Lithium Ion Battery Voltage Explained: Everything](#)

...

11 How does temperature affect lithium-ion battery voltage? 12 Can I use a lithium-ion battery below its minimum voltage? 13 What ...



### [The Comprehensive Guide to LiFePO4 Voltage ...](#)

Explore our comprehensive guide to the LiFePO4 voltage chart. Understand voltage specifications, applications, and tips for optimal battery performance!

### [Caring for Your Lithium Iron Battery Guide](#)

Use the table below to determine the recommended minimum storage voltage. If the voltage falls below this value during a maintenance check, it is recommended that the ...



### [What is the minimum volt of the iron clad energy storage battery](#)



With regard to iron clad energy storage batteries, the minimum operational voltage is a critical parameter that determines overall performance. Typically, these batteries operate ...

### [Ultimate Guide to LiFePO4 Voltage Chart](#)

For 12V LiFePO4 batteries, the minimum voltage damage is approximately 10V. The LiFePO4 battery is likely to suffer irreversible ...





## Contact Us

---

For inquiries, pricing, or partnerships:

<https://www.zawojesolina.pl>

Phone: +48 22 173 6647

Email: [info@zawojesolina.pl](mailto:info@zawojesolina.pl)

Scan QR code for WhatsApp.

