



# What is the outdoor solar power hub in kigali





## Overview

---

Kigali Solaire is a solar power plant in Rwanda and at the time of construction was Africa's largest grid-tied solar energy installation. It was built in 2006 on Mont Jali near the capital Kigali.

Kigali Solaire is a solar power plant in Rwanda and at the time of construction was Africa's largest grid-tied solar energy installation. It was built in 2006 on Mont Jali near the capital Kigali.

Kigali Solaire is a solar power plant in Rwanda and at the time of construction was Africa's largest grid-tied solar energy installation. It was built in 2006 on Mont Jali near the capital Kigali. The plant uses photovoltaics and has a peak output of 250 kW and an estimated annual output of 325,000.

Global Solar Power Tracker, a Global Energy Monitor project. Jali solar farm is an operating solar farm in Kigali, Rwanda. Read more about Solar capacity ratings. The map below shows the approximate location of the solar farm: Loading map. To access additional data, including an interactive map.

As Kigali transforms into East Africa's innovation hub, reliable outdoor power solutions have become essential for construction sites, outdoor markets, and residential complexes. With frequent grid challenges and growing environmental awareness, local merchants now prioritize solar-powered systems.

The solar field in Rwanda, the first utility-scale solar photovoltaic (PV) field in East Africa, and first in sub-Saharan Africa outside of South Africa, was developed, financed and constructed in record time. The PV plant, which increased Rwanda's generation capacity by 6%, is situated 60km from.

With a potential of 4.5 kWh per m<sup>2</sup> per day and approximately 5 peak sun hours, solar energy has a huge potentiality in Rwanda. Currently, Rwanda's total on-grid installed solar energy is 12.050 MW originating from 3 solar power plants namely Jali power plant generating 0.25MW, Rwamagana Gigawatt.

Kigali Solaire - Kigali Photovoltaic Power Plant is a solar power plant with a total output of 250 kW. Data © OpenStreetMap contributors, ODbL. International regions © MarineRegions.org, CC-BY. Analysis © Open Infrastructure Map, CC-BY. Purchase



data exports at Infrageomatics.



## What is the outdoor solar power hub in kigali

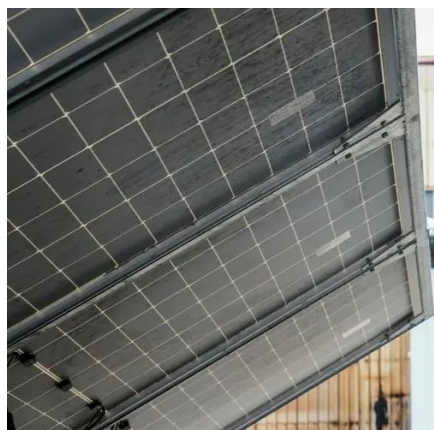


### Jali solar farm

Articles and Resources Additional data To access additional data, including an interactive map of global solar farms, a downloadable dataset, and summary data, please visit ...

### [Rwamagana Solar Power Station](#)

The power station is located on leased land, at the campus of Agahozo Shalom Youth Village, in Rwamagana District, Eastern Rwanda, approximately 58 kilometres (36 mi), by road, ...



### Kigali Solaire

Kigali Solaire - Kigali Photovoltaic Power Plant is a solar power plant with a total output of 250 kW. Data © OpenStreetMap contributors, ODbL. International regions © MarineRegions , ...

### [Kigali Outdoor Power Supply Solutions Powering Rwanda s Growth](#)

Solar solutions now account for 68% of outdoor power installations in Kigali. The combination of Rwanda's equatorial sunlight (4.8 kWh/m<sup>2</sup>/day average) and decreasing equipment costs ( ...



2MW / 5MWh  
Customizable



### [Izuba GWG Rwanda -- Izuba](#)

The PV plant, which increased Rwanda's generation capacity by 6%, is situated 60km from the capital of Kigali, on land owned by the Agahozo-Shalom Youth Village (ASYV) for youth ...

### [Top 11 Solar Energy Companies in Rwanda](#)

Search results of Top 11 Solar Energy Companies in Rwanda, near me. Listings are verified with accurate business information.



### [Kigali Solaire -- Wikipedia Republished // WIKI 2](#)

Kigali Solaire is a solar power plant in Rwanda and at the time of construction was Africa's largest grid-tied solar energy installation. It was built in 2006 on Mont Jali near the capital Kigali.

## Solar



The Government of Rwanda intends to increase the number of solar power plants to reduce the cost of production and take advantage of available ...



**Deye Official Store** **10 years warranty**



### Solar

The Government of Rwanda intends to increase the number of solar power plants to reduce the cost of production and take advantage of available renewable sources in Rwanda.

### Solar

With a potential of 4.5 kWh per m<sup>2</sup> per day and approximately 5 peak sun hours, solar energy has a huge potentiality in Rwanda. Currently, ...



### Impact Hub Kigali

Impact Hub Kigali is a coworking space that is exciting, friendly, affordable, and well-staffed. The modern design is sprinkled with vines and potted plants that effectively add ...

[HiRi - Horizon Institute of Research and Innovation Hub](#)



Horizon Institute of Research and Innovation Hub is a strong and reliable Research Partner in Africa Our Work Our research areas include: Green Transition & Energy Access, Climate ...



### [Africa Energy Expo , Transforming the African ...](#)

A pre-qualified meeting service supporting Africa's PPP development, connecting equity buyers and investors with energy project companies in ...



### [Kabisa EV House Opens in Kigali as New Hub for e-Mobility in ...](#)

Clean energy infrastructure company Meshpower took the lead in installing new solar panels at EV House, meaning customers can charge off-grid at the facility using ...



### [2025 UCI Road World Championships Kigali, Rwanda , Historic ...](#)

From September 21-28, 2025, Kigali, Rwanda Will Host The 2025 UCI Road World Championships -- The First Ever On African Soil In The Event's 103-year History.



### [Hardware Store in Kigali - Lighting, Solar & Generators , Solid ...](#)



Hardware, Lighting & Power Solutions in Kigali - Solid Hardware Ltd Door handles, architectural lighting, generators and solar systems for homes, offices and commercial projects.



### KIGALI ENERGY STORAGE POWER STATION

What is a photovoltaic power station? The design and function of a photovoltaic power station represent the height of green design and energy transformation. It has the perfect mix of solar ...

### **Kigali Solaire**

Kigali Solaire is a solar power plant in Rwanda and at the time of construction was Africa's largest gridlinked solar energy installation. It was built in 2007 on Mont Jali near the ...



### **Jali solar farm**

Jali solar farm is an operating solar farm in Kigali, Rwanda.

[Kigali: Technological Innovation in a Global South City](#)



In urban areas like Kigali, the local authorities use it to inform citizens of local road closures or water supply issues through text messages. A few kilometers outside Kigali lies a ...



### [Izuba GWG Rwanda -- Izuba](#)

The PV plant, which increased Rwanda's generation capacity by 6%, is situated 60km from the capital of Kigali, on land owned ...

### [Solar Power Contractors in Kigali Rwanda . CONSTRUCTION HUB](#)

<https://constructionhub.rw/business-category/contractors-and-subcontractors/4-mechanical-electrical-plumbing-contractors/solar-power-contractors/3232>



### **Kigali Solaire**

Kigali Solaire is a solar power plant in Rwanda and at the time of construction was Africa's largest grid-tied solar energy installation. It was built in 2006 on Mont Jali near the capital Kigali.

### [KIGALI OUTDOOR ENERGY STORAGE SOLUTIONS](#)

...



The 1000W advanced outdoor power supply not only has a cool appearance and light weight, but also has a 1000W output power; The battery with built-in lithium iron phosphate has a longer ...



### [Memberships - Impact Hub Kigali](#)

Our coworking space is reopening to do more than offer desks--it's here to power the next wave of innovation, creativity, and collaboration in Kigali.

...



## Contact Us

---

For inquiries, pricing, or partnerships:

<https://www.zawojcsolina.pl>

Phone: +48 22 173 6647

Email: [info@zawojcsolina.pl](mailto:info@zawojcsolina.pl)

Scan QR code for WhatsApp.

