



Which 10MWh server rack in the Northwest Data Center is more durable





Overview

This blog outlines best practices for data center area planning per rack , segmented by power density levels (5–12 kW, 12–20 kW, and >20 kW), and based on the industry-standard space allocation model:.

This blog outlines best practices for data center area planning per rack , segmented by power density levels (5–12 kW, 12–20 kW, and >20 kW), and based on the industry-standard space allocation model:.

In today's rapidly evolving digital landscape, data centers must be designed with precision to support varying rack power densities—from standard IT workloads to high-performance computing (HPC) and AI/ML clusters. One of the most critical aspects of this design is area sizing per rack , which.

To help data center architects and IT staff in those duties are modern server racks, ranging from inexpensive simplified units to fully integrated cabinets with hot-swappable capabilities and air-conditioned enclosures. Choosing the best server racks starts with understanding all the options.

While a standard rack uses 7-10 kW, an AI-capable rack can demand 30 kW to over 100 kW, with an average of 60 kW+ in dedicated AI facilities. This article provides a condensed analysis of these costs, key efficiency metrics, and optimization strategies. Data center power density, measured in.

A data center server rack is critical for managing and organizing IT equipment. It supports hardware, enhances cooling, and ensures efficient power distribution. Choosing the right server rack involves understanding key dimensions, types, and features. This guide covers everything you need for.

Selecting the right data center server rack plays a crucial role in maintaining network rack organization, enhancing data center efficiency, and ensuring scalability. For instance, open frame racks are increasingly preferred due to their superior airflow and cooling capabilities, with a projected.

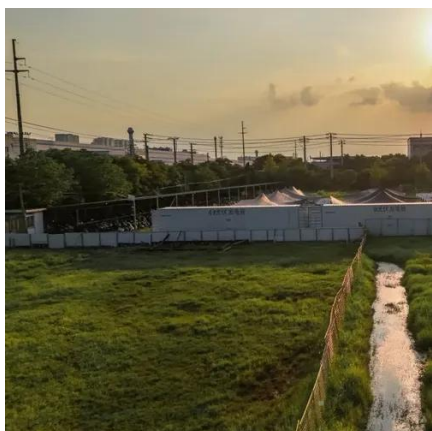
There are three primary rack types - open-frame racks, enclosed cabinets, and wall-mount racks, each suited for different levels of security, cooling, and equipment density. Selecting the right rack requires evaluating its height (U), depth, width,



weight capacity, airflow design, power integration.



Which 10MWh server rack in the Northwest Data Center is more durable



[Rack Density Increasing: Trends and Implications](#)

This article explains the reasons behind the recent increase in density per rack. Read on to learn what is causing this trend and what steps data centers will have to make to ...

[Data Center Rack and Stack Cost Guide for U.S.](#)

Explore our comprehensive Data Center Rack and Stack Cost Guide, offering insights into pricing for rack installation cable management, and more.



[North America Data Center Trends H2 2024 , CBRE](#)

CBRE explores top data center markets in North America, reporting on supply, demand, and pricing trends for ...

[Data Center Rack Power Costs: A Condensed Analysis , Nlyte](#)

While a standard rack uses 7-10 kW, an AI-capable rack can demand 30 kW to over 100 kW, with an average of 60 kW+ in dedicated AI facilities. This article provides a ...



[Data Center Server Rack Size: A Beginner's Guide](#)

The right server rack size is essential for the efficient operation and management of a data center. However, the optimal size of the Rack is tough to choose. This guide will give ...



[The Ultimate Guide to Choosing the Best Server Racks for Your ...](#)

Ships Within 3-5 Days· View Solutions· Fastest Turnaround Time



- 50KW/100KWH
- HIGHER POWER OUTPUT IN OFF-GRID MODE
- CONVENIENT OPERATION & MAINTENANCE
- PRE-WIRED

Redmond Data Center

Colocation Northwest's Redmond data center features 2,500 ft 2 of retail colocation space. Available are locking 42U cabinets up to 10 kW and ...



[ESTEL Guide to Choosing the Best Server Rack for Your Data Center](#)



Choose the best data center server rack by considering size, cooling, security, and scalability to optimize performance and future-proof your setup.



[Data center pulse: 1MW racks are on the way](#)

He added that freeing up space in the server rack is "essential to allow for more north-south fast communication within the rack and pile ...



[Microsoft and Meta reveal open AI rack design with ...](#)

Microsoft and Meta have been working on a new open rack design for AI data centers which separates power and compute into ...



[How much power do your racks typically support? : ...](#)

Rack and stack! News, comments, tools, and questions about servers, network hardware, DC infrastructure, industry jobs, and more are ...



51.2V 150AH, 7.68KWH

[The Ultimate Guide to Choosing the Best Server Racks for Your Data Center](#)



Choosing the best server racks for your network infrastructure is crucial for optimizing performance and cost. Explore our range of server racks designed to meet your current and ...



[Microsoft: MWH01 AZ-D Data Center](#)

Microsoft: MWH01 AZ-D data center in Quincy with 32 facilities nearby. Get pricing, specs, and colocation information from ...



[Racks for Servers and Data Center Network ...](#)

Server racks and cabinets for data center equipment. ? Best price & quality ratio. Delivery across the USA. 30-day money-back guarantee!



[Data center pulse: 1MW racks are on the way](#)

This is pushing the entire power architecture to an adjacent rack sidecar allowing for more servers to be packed within a same rack," Cordovil explained. He added that freeing up ...



Low Voltage Lithium Battery
6000+ Cycle Life

[Data Center Server Rack: The Ultimate Guide \[2025\]](#)



In summary, choosing the right server rack for your data center involves understanding the various types, dimensions, and features that make up these essential ...



[Microsoft and Meta reveal open AI rack design with separate ...](#)

Microsoft and Meta have been working on a new open rack design for AI data centers which separates power and compute into different cabinets. Known as Mount Diablo, ...



[kW per Rack Explained: Optimize Your Data Center](#)

Learn how kW per rack impacts colocation pricing, energy efficiency, and performance. Discover best practices to manage power, ...



[Everything You Need to Know About Data Center ...](#)

In this article, we will examine all of the important power terminology and calculations that you need to know before starting your ...

[Top Data Center Rack Options and Buying Tips](#)



With the increasing reliance on robust and efficient data center infrastructure, choosing the best racks is more crucial than ever. This guide dives deep into the top options ...



[A Guide to Server Rack Sizes for Data Centers](#)

With this reality in mind, keep reading for a guide to server rack sizes, including why server rack size matters, which sizes are available, ...

[Data Center Server Rack Guide \(2026\): Types, Design, Airflow, ...](#)

Data center server racks are more than equipment enclosures--they define the efficiency, reliability, and scalability of the infrastructure inside them. The right rack supports optimized ...





Contact Us

For inquiries, pricing, or partnerships:

<https://www.zawojcsolina.pl>

Phone: +48 22 173 6647

Email: info@zawojcsolina.pl

Scan QR code for WhatsApp.

